



Memorial Sloan Kettering  
Cancer Center

**MediSys** *Health  
Network*

# Achieving **Health Equity** in Cancer Care

Harnessing the Power of **Research, Technology**  
and **Community-Based Partnerships**



**Complimentary Conference**  
**November 14, 2025**

Zuckerman Research Center | New York City



Presented by Memorial Sloan Kettering Cancer Center and MediSys Health Network with support from the MSK Ralph Lauren Center and the City College of New York-Memorial Sloan Kettering Partnership Program for Cancer Research.



*“One of the best conferences I attend each year.”*

*“Outstanding perspectives on health equity — from education and access to care, to research diversity.”*

*“All speakers demonstrated exceptional knowledge and commitment to cancer equity.”*

— Prior Participant Feedback

**Memorial Sloan Kettering Cancer Center** and **MediSys Health Network**, with support from the **MSK Ralph Lauren Center** and the **City College of New York-Memorial Sloan Kettering Partnership Program for Cancer Research**, proudly present the third annual **Achieving Health Equity in Cancer Care** conference.

This conference is **complimentary for all participants**, and we proudly welcome all members of the community to attend.

---

**For additional details and registration, visit:**  
**[msk.org/HealthEquityConference](https://msk.org/HealthEquityConference)**

# Overview

This dynamic, one-day event brings together experts from various fields, institutions, and specialties to explore actionable strategies for advancing health equity in underserved populations. The conference features globally and nationally recognized speakers, as well as leaders from community hospitals—offering a 360-degree perspective on effective, equitable cancer care delivery.

This year's program centers on ***Harnessing the Power of Research, Technology, and Community-Based Partnerships***. Session topics include the role of technology in improving outcomes and access, the geography of disease, academic–community partnerships, and care delivery through community ties. These discussions are relevant to every member of the healthcare team, and we welcome all to attend.

## Target Audience

This conference is **complimentary for all participants** and is intended for all healthcare providers with an interest in advancing health equity, including physicians, advanced practice providers, trainees, nurses, patient navigators, social workers, and case managers.

Beyond the insights shared, this conference offers a unique opportunity to build community and foster collaborations among individuals passionate about advancing health equity in cancer care.

## Educational Objectives

Participants will be able to:

- Discuss current and ongoing initiatives in health equity.
- Strategize practical approaches to implementing health equity programs in their own practice.
- Describe how various institutions are addressing shared health equity challenges.

## Location

Memorial Sloan Kettering Cancer Center  
Zuckerman Research Center  
417 East 68th Street  
New York City



***This conference will be held exclusively in person.***

## Continuing Education Credits

The following credits will be offered:

- AMA PRA Category 1 Credits™
- American Board of Anesthesiology's (ABA) MOC
- American Board of Internal Medicine's (ABIM) MOC
- American Board of Otolaryngology-Head & Neck Surgery (ABOHNS) CC
- American Board of Pathology (ABPath) CC
- American Board of Pediatrics (ABP) MOC
- American Board of Surgery (ABS) CC
- American Board of Thoracic Surgery (ABTS) MOC
- New York State Psychology Contact Hours
- New York State Social Work Contact Hours (pending approval)
- ANCC Nursing Contact Hours (pending approval)

Please refer to the **Accreditation** section for complete details.

## Post-Conference Resources

Following the event, participants will receive access to an online syllabus with video recordings and faculty slide decks.

### **PLEASE BE ADVISED:**

Registration has sold out for the past two years; **early registration is strongly encouraged.**

**Onsite participation is expected of all registrants.** If you register for this event but are unable to attend, you must contact **[cme@mskcc.org](mailto:cme@mskcc.org)** to cancel your registration.

An **on-demand version** of the program will be available after the event for those unable to attend in person.

# Planners & Faculty

## Conference Director



### **Rosa Nouvini, MD**

Assistant Attending, Department of Medicine;  
Site Director, Jamaica Hospital Cancer Center  
Memorial Sloan Kettering Cancer Center  
Hematology/Oncology Site Director, Jamaica Hospital

## Conference Planning Committee



### **Fiyinfolu Balogun, MD, PhD**

Assistant Attending, Gastrointestinal Oncology Service,  
Department of Medicine  
Memorial Sloan Kettering Cancer Center



### **Vicky Baudin, MPH**

Program Manager, Global Cancer Research Training Program  
Memorial Sloan Kettering Cancer Center



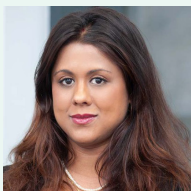
### **Christopher M. Brooks, MS**

Clinical Nurse Specialist, Acute Care Services  
Memorial Sloan Kettering Cancer Center



### **Joshua A. Budhu, MD, MS, MPH**

Assistant Attending, Brain Tumor Service,  
Department of Neurology;  
Nicholls-Biondi Diversity Clinical Scientist Faculty Scholar  
Memorial Sloan Kettering Cancer Center



### **Debyani Chakravarty, PhD**

Associate Member, Diagnostic Molecular Pathology Service,  
Department of Pathology and Laboratory Medicine  
Memorial Sloan Kettering Cancer Center



**Rosario Costas-Muñiz, PhD**

Assistant Attending,  
Department of Psychiatry and Behavioral Sciences  
Memorial Sloan Kettering Cancer Center



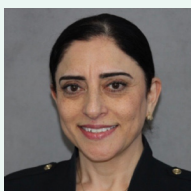
**Ana Garcia, MPA, MS**

Senior Director, Community Engagement and Health Equity  
Memorial Sloan Kettering Cancer Center



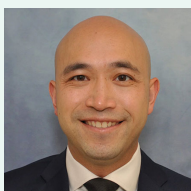
**David G. Pfister, MD**

Associate Deputy Physician-in-Chief, Strategic Partnerships;  
Attending, Head and Neck Oncology Service,  
Department of Medicine  
Memorial Sloan Kettering Cancer Center  
Chair, Jamaica Hospital Cancer Center



**Sabiha Raoof, MD, FACR, FCCP**

Chief Medical Officer  
MediSys Health Network;  
Chair of Radiology  
Jamaica Hospital Medical Center  
Flushing Hospital Medical Center



**Jia Llon Yee, MD**

Attending, Hematology Oncology  
Jamaica Hospital Medical Center  
Medisys Health Network

**Conference Faculty**

**Tracy Battaglia, MD, MPH**

Professor of Medicine (General Medicine);  
Associate Director, Community  
Outreach and Engagement  
Yale Cancer Center

**Victoria S. Blinder, MD**

Associate Attending, Department of  
Psychiatry and Behavioral Sciences  
Memorial Sloan Kettering Cancer Center

**Craig D. Blinderman, MD, MA**

Chief, Supportive Care Service  
Memorial Sloan Kettering Cancer Center

**Otis Brawley, MD**

Bloomberg Distinguished Professor  
of Oncology and Epidemiology,  
John Hopkins University;  
Vice Chair for IDARE, Department of  
Epidemiology, Bloomberg School of Public  
Health; Associate Director, Community  
Outreach and Engagement, Sidney Kimmel  
Comprehensive Cancer Center

**Oscar Corzo, MD**

Attending, Palliative Care;  
Medical Advisor, Jamaica Hospital's Care  
Management Programs  
Jamaica Hospital Medical Center  
Medisys Health Network

**Jason Domogauer, MD, PhD**

Clinical Instructor,  
Department of Radiation Oncology;  
Director, LGBTQ+ Cancer Care & Research  
NYU Grossman School of Medicine

**Bruce Flanz, MBA**

President and CEO  
Jamaica Hospital Medical Center  
Medisys Health Network

**Harold Freeman, MD**

President and Founder, Ralph Lauren  
Center for Cancer Care and Prevention;  
Chairman, Harold P. Freeman Patient  
Navigation Institute

**Francesca M. Gany, MD, MS**

Chief, Immigrant Health and Cancer  
Disparities Service; Nicholls-Biondi  
Chair for Community Health Equity  
Memorial Sloan Kettering Cancer Center

**Marzyeh Ghassemi, PhD**

Herman L. F. von Helmholtz Career  
Development Professor; Associate  
Professor, Electrical Engineering and  
Computer Science and Institute for  
Medical Engineering & Science  
Massachusetts Institute of Technology

**Neha Goel, MD, MPH**

Associate Attending; Chief of Disparities,  
Department of Surgery;  
Jeanne A. Petrek Junior Faculty Chair  
Memorial Sloan Kettering Cancer Center

**Joseph L. Graves, PhD**

Mackenzie Scott Endowed  
Professor of Biology;  
Director, Genomic Research and Data  
Science Center for Computation and  
Cloud-Computing, GRADS-4C, NIH;  
Associate Director, Precision Microbiome  
Engineering (PreMiEr) NSF Gen-4 ERC;  
Director, NC Amgen Biotech Experience  
North Carolina A&T State University

**Justin Jee, MD, PhD**

Instructor, Department of Medicine  
Memorial Sloan Kettering Cancer Center

**Elizabeth Jewell, MD**

Attending Surgeon,  
Department of Surgery;  
Vice President of Regional Partnerships;  
Vice Chair of Surgery,  
Regional Network and Affiliates  
Memorial Sloan Kettering Cancer Center

**T. Peter Kingham, MD, FACS**

Attending, Hepatopancreatobiliary Service;  
Director, Global Cancer Research and  
Training (GCRT) Program  
Memorial Sloan Kettering Cancer Center

**Anaeze Offodile II, MD, MPH**

Chief Strategy Officer;  
Executive Vice President  
Memorial Sloan Kettering Cancer Center

**José G. Pérez Ramos PhD, MPH**

Assistant Professor,  
Department of Public Health Sciences;  
Center for Community Health & Prevention;  
Department of Obstetrics & Gynecology;  
Department of Pediatrics  
University of Rochester  
School of Medicine and Dentistry

**Cardinale Smith, MD, PhD**

Chief Medical Officer  
Memorial Sloan Kettering Cancer Center

**Rebecca Telzak, MPA**

Deputy Director  
Make the Road NY

**Selwyn M. Vickers, MD, FACS**

President and Chief Executive Officer  
Memorial Sloan Kettering Cancer Center

**Louis P. Voigt, MD**


Chair, Ethics Committee;  
Attending, Critical Care Medicine Service  
Memorial Sloan Kettering Cancer Center

**Christopher Williams**

Founder and Chief Executive Officer  
Heart, Body & Soul

# Schedule

November 14, 2025 | Zuckerman Research Center

TIME	SESSION/FACULTY
7:15 AM	Breakfast and Check-in
8:00 AM	<div>Introductory Remarks</div> <div><div><b>Rosa Nouvini, MD</b> Conference Director Memorial Sloan Kettering Cancer Center</div></div>
8:05 AM	<div>Welcome Address</div> <div><div><b>Selwyn Vickers, MD, FACS</b> President and CEO Memorial Sloan Kettering Cancer Center</div></div> <div><div><b>Bruce Flanz, MBA</b> President and CEO MediSys Health Network</div></div>
8:15 AM	<div>Keynote Address</div> <div><div><i>Cancer Control in the 21<sup>st</sup> Century With an Emphasis on Implementation of What Works</i> <b>Otis Brawley, MD</b></div></div>

## Session I

### Mapping Biology: Unpacking the Geography of Disease

9:00 AM	<i>Improving Outcomes for Colorectal Cancer in Nigeria</i> <b>T. Peter Kingham, MD, FACS</b>
9:25 AM	<i>ZIP Code to Genomic Code: A Translational Epidemiological Framework for Disparities Research</i> <b>Neha Goel, MD, MPH</b>
9:50 AM	<i>Why Black People Die Sooner, What Medicine Gets Wrong About Race, and How to Fix it</i> <b>Joseph L. Graves, PhD</b>
10:15 AM	Break

## Session II

# Leveraging Current Technologies to Improve Outcomes

10:35 AM	<i>The Pulse of Ethical Machine Learning In Health</i> <b>Marzyeh Ghassemi, PhD</b>
11:00 AM	<i>A Mobile App to Improve Work Outcomes During Cancer Treatment</i> <b>Victoria S. Blinder, MD</b>
11:25 AM	<i>Improving Health from the Ground Up: Digital Solutions for and by Communities</i> <b>José G. Pérez Ramos PhD, MPH</b>

## Spotlight on

# Patient Navigation

11:50 AM	<i>The Origin, Development, and Principles of Patient Navigation</i> <b>Harold Freeman, MD</b>
12:20 PM	<i>Innovative Persistence: Oncology Patient Navigation</i> <b>Tracy Battaglia, MD, MPH</b>
12:45 PM	Lunch Break
1:45 PM	<b>Keynote Address</b>  <i>The Power of Partnership: Operationalizing Community Engagement for Equitable Cancer Outcomes</i> <b>Cardinale Smith, MD, PhD</b>

## Session III

# Coordinated Care Delivery Through Community Support

2:15 PM	<b>Patient Story</b> <i>Our Bodies, Their Clocks: Helping the System See Us More Clearly</i> <b>Christopher Williams</b>
2:25 PM	<i>Synergizing Community Based Organizations and Health Systems for Improved Health Outcomes</i> <b>Rebecca Telzak, MPA</b>
2:50 PM	<i>Building Bridges: Advancing LGBTQ+ Cancer Care Through Community Partnerships and Patient Navigation</i> <b>Jason Domogauer, MD, PhD</b>
3:15 PM	Break

## Panel Discussion

3:35 PM

*Leveraging Artificial Intelligence (AI) to Meet the Needs of the Community*

MODERATOR **Louis P. Voigt, MD**

PANELISTS **Craig D. Blinderman, MD, MA**  
**José G. Pérez Ramos PhD, MPH**  
**Justin Jee, MD, PhD**

## Session IV

# Breaking Barriers Through Academic and Community Hospital-Based Partnerships

4:05 PM

### Case Presentation

*Bridging Worlds: A Shared MSK–Jamaica Hospital Patient Journey*

**Joshua A. Budhu, MD, MS, MPH**

**Oscar Corzo, MD**

**Jia Llon Yee, MD**

4:15 PM

*With a Little Help from My Friends: Care Management at Jamaica Hospital*

**Oscar Corzo, MD**

## Panel Discussion

4:25 PM

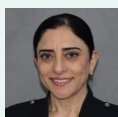
*Collaborative Lessons for Equitably Transforming Healthcare from Jamaica Hospital and Memorial Sloan Kettering*

MODERATOR **David G. Pfister, MD**

PANELISTS **Bruce Flanz, MBA**  
**Sabiha Raoof, MD, FACR, FCCP**  
**Elizabeth Jewell, MD**  
**Francesca M. Gany, MD, MS**

4:55 PM

### Closing Remarks



**Sabiha Raoof, MD, FACR, FCCP**

Chief Medical Officer  
MediSys Health Network

5:00 PM

Adjournment

For additional details and registration, visit:

**[msk.org/HealthEquityConference](https://msk.org/HealthEquityConference)**

# Accreditation

Memorial Sloan Kettering Cancer Center is accredited by the Accreditation Council for Continuing Medical Education to provide continuing medical education for physicians.

## AMA Credit Designation Statement

Memorial Sloan Kettering Cancer Center designates this live activity for a maximum of **7.25 AMA PRA Category 1 Credits™**. Physicians should claim only the credit commensurate with the extent of their participation in the activity.

## MOC/CC Recognition Statements

Successful completion of this CME activity, which includes participation in the evaluation component, enables the participant to earn up to **7.25 credits/points** in the following certification programs:

- Lifelong Learning credits for the American Board of Anesthesiology's (ABA) Maintenance of Certification in Anesthesiology TM (MOCA®) program; and
- Medical Knowledge MOC points in the American Board of Internal Medicine's (ABIM) Maintenance of Certification Assessment Recognition Program; and
- Self-Assessment credits for the American Board of Otolaryngology – Head and Neck Surgery (ABOHNS) Continuing Certification program; and
- Lifelong Learning (Part II) credits for the American Board of Pathology (ABPath) Continuing Certification program; and
- Lifelong Learning & Self-Assessment MOC points for the American Board of Pediatrics (ABP\*) Maintenance of Certification program; and
- Accredited CME and Self-Assessment credits for the American Board of Surgery (ABS) Continuous Certification program; and
- Accredited CME and Self-Assessment credits for the American Board of Thoracic Surgery (ABTS) Maintenance of Certification program.

MOC/CC points will be reported to your board within 45 days of course completion.

## Continuing Education for Licensed Psychologists in New York State\*\*

**This event offers 7.25 NYS Psychology Contact Hours.**

Memorial Sloan Kettering Cancer Center is recognized by the New York State Education Department State Board for Psychology as an approved provider of continuing education for licensed psychologists #PSY-0166.

## New York State Social Work\*\*

Contact hours pending application approval.

## ANCC CNE Statement

Contact hours pending application approval.

--

**\*To receive ABP MOC points for the 2025 calendar year, a course evaluation must be completed by Friday, November 27, 2025**

**\*\*Not all states accept New York State Contact Hours/CEUs. We recommend consulting your state licensing board to confirm whether the credit types offered for this course are accepted.**



Memorial Sloan Kettering  
Cancer Center