

The **Lisa and Scott Stuart Center for Adolescent and Young Adult Cancers** at MSK is pleased to present

# Shaping Tomorrow:

## Advancing Cancer Care & Research for **Adolescents & Young Adults**

**Complimentary Symposium**

**September 12, 2025**

**New York City**



**Memorial Sloan Kettering  
Cancer Center**



# Overview

**This complimentary symposium at Memorial Sloan Kettering Cancer Center (MSK) brings together leading experts to share the latest research and innovative treatments tailored to the unique needs of the adolescent and young adult (AYA) cancer population, with the goal of advancing care and improving outcomes.**

The program will **center on three core themes:**

- Translating biological discoveries into clinical application
- Innovations in supportive services to enhance quality of life
- Emerging interventional studies

Attendees will benefit from **dynamic group discussions and interactive breakout sessions** led by renowned experts in the field. The program also includes a **thought-provoking keynote address**, special sessions to support interprofessional care teams, and dedicated opportunities for professional growth and community building. A **networking reception** at the conclusion of the symposium will offer additional time to connect and collaborate with faculty and fellow attendees.

This **in-person-only event** is designed for senior and junior faculty, researchers, and healthcare professionals across disciplines who are committed to advancing AYA cancer care. Registration is **complimentary for all participants**.

This symposium is proudly presented by the **Lisa and Scott Stuart Center for Adolescent and Young Adult Cancers** at MSK.

## Educational Objectives

At the conclusion of this symposium, attendees will be able to:

- Identify and discuss recent advancements in translational biology relevant to AYA oncology, with a focus on how discoveries are informing treatment strategies
- Evaluate current best practices in supportive care for AYA patients, with a focus on psychosocial support, symptom management, and enhancing quality of life during treatment and survivorship
- Examine ongoing interventional studies in AYA oncology, focusing on innovative treatment approaches, clinical trial design, and their potential impact on improving outcomes for this patient population

## Credits Offered

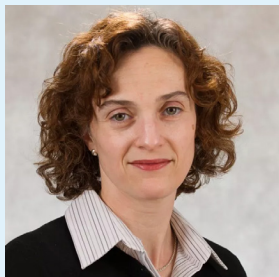
This symposium will offer the following credit types (see **Accreditation** section for details):

- AMA PRA Category 1 Credits™
- ABIM MOC Points
- ABP MOC Points
- New York State Psychology Contact Hours
- New York State Social Work Contact Hours (*Pending application*)
- ANCC CNE Contact Hours (*Pending application*)

Registration is complimentary for all participants.

Learn more and register at:

**[msk.org/AYAsymposium](https://msk.org/AYAsymposium)**

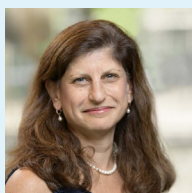


## Symposium Director

### **Chaya Moskowitz, PhD**

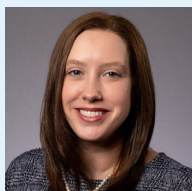
Attending Biostatistician  
Research Director, Lisa and Scott Stuart Center for  
Adolescent and Young Adult Cancers  
Memorial Sloan Kettering Cancer Center

## Symposium Planning Committee



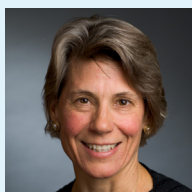
### **Julia Glade Bender, MD**

Vice Chair for Clinical Research, Department of Pediatrics  
Clinical Co-Director, Lisa and Scott Stuart Center for  
Adolescent and Young Adult Cancers  
Memorial Sloan Kettering Cancer Center



### **Katie Devine, PhD, MPH**

Associate Director of the New Jersey Pediatric Hematology &  
Oncology Research Center of Excellence, Rutgers Cancer Institute  
Associate Professor of Pediatrics  
Section Chief of Pediatric Population Science, Outcomes, and  
Disparities Research, Division of Pediatric Hematology/Oncology,  
Rutgers Robert Wood Johnson Medical School



### **A. Lindsay Frazier, MD**

Associate Professor, Pediatric Oncology,  
Dana-Farber Cancer Institute  
Professor, Pediatrics, Harvard Medical School  
Research Associate, Nutrition,  
Harvard T.H. Chan School Of Public Health



### **Samuel A. Funt, MD**

Assistant Attending,  
Genitourinary Oncology Service  
Memorial Sloan Kettering Cancer Center



### **Asher Marks, MD**

Associate Professor of Pediatrics (Hematology/Oncology)  
Director, Pediatric Neuro-Oncology  
Yale School of Medicine



### **Damon R. Reed, MD**

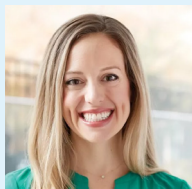
Division Head, Pediatric Solid Tumors  
Chief, Pediatric Sarcoma Service  
Memorial Sloan Kettering Cancer Center





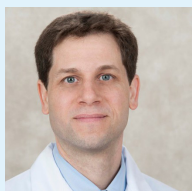
**Lisa G. Roth, MD**

Professor of Pediatrics  
Director, Pediatric Oncology  
Weill Cornell Medicine



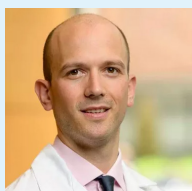
**Emily Sarro, MSN, RN, FNP-BC, CPHON®**

Nurse Practitioner, Lisa and Scott Stuart Center for  
Adolescent and Young Adult Cancers  
Memorial Sloan Kettering Cancer Center



**William D. Tap, MD**

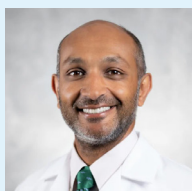
Chief, Sarcoma Medical Oncology Service  
Clinical Co-Director, Lisa and Scott Stuart Center for  
Adolescent and Young Adult Cancers  
Memorial Sloan Kettering Cancer Center



**Yannis K. Valtis, MD**

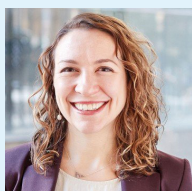
Assistant Attending  
Leukemia and Cell Therapy Services  
Memorial Sloan Kettering Cancer Center

**Symposium Faculty**



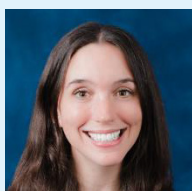
**Aditya Bagrodia, MD, FACS**

Urologic Oncologist; Professor of Urology  
Disease Team Co-Leader, Genitourinary Cancer  
UC San Diego School of Medicine



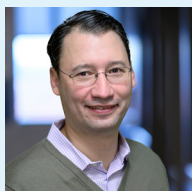
**Marie E. Barnett, PhD**

Assistant Attending, Psychiatry Service  
Memorial Sloan Kettering Cancer Center



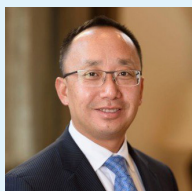
**Natasha N. Frederick, MD, MPH, MST**

Director, Comprehensive Fertility and Sexual Health Team  
Connecticut Children's



### **Alex Kentsis, MD, PhD**

Member, Molecular Pharmacology Program  
Director of the Tow Center for Developmental Oncology  
Memorial Sloan Kettering Cancer Center



### **Jun J. Mao, MD, MSCE**

Chief, Integrative Medicine Service  
Memorial Sloan Kettering Cancer Center



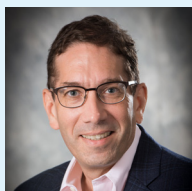
### **Vidya Puthenpura, MD, MHS, FAAP**

Assistant Professor of Pediatrics (Hematology/Oncology)  
Yale School of Medicine



### **Emily Slotkin, MD**

Assistant Attending, Department of Pediatrics  
Memorial Sloan Kettering Cancer Center



### **Robert Weiss, PhD**

Professor of Molecular Genetics  
Senior Associate Dean, Graduate School  
Cornell University College of Veterinary Medicine

Memorial Sloan Kettering Cancer Center adheres to the ACCME's Standards for Integrity and Independence in Accredited Continuing Education (CE). Any individuals in a position to control the content of a CE activity, including faculty, planners, reviewers, or others are required to disclose all financial relationships with ineligible companies (commercial interests). All relevant financial relationships is mitigated prior to the commencement of the activity.

# Schedule

TIME	SESSION/FACULTY
7:15 AM	Breakfast and Check-in
8:00 AM	<b>Welcome and Introduction</b> <b>Chaya Moskowitz, PhD</b> Memorial Sloan Kettering Cancer Center
8:05 AM	<b>Keynote Address</b> <i>To be announced</i>
9:00 AM	Break and Refreshments

## Translational Biology

MODERATOR	<b>A. Lindsay Frazier, MD</b> Dana-Farber Cancer Institute / Harvard Medical School
9:15 AM	<b>Patient Perspective</b>
9:25 AM	<b>Alex Kentsis, MD, PhD</b> Memorial Sloan Kettering Cancer Center
9:40 AM	<b>Robert Weiss, PhD</b> Cornell University College of Veterinary Medicine
9:55 AM	<b>Aditya Bagrodia, MD, FACS</b> UC San Diego School of Medicine
10:10 AM	<b>Q&amp;A and Panel Discussion</b>
10:30 AM	Break and Refreshments

## Supportive Care

MODERATORS	<b>Katie Devine, PhD, MPH</b> Rutgers Cancer Institute / Rutgers Robert Wood Johnson Medical School
	<b>Asher Marks, MD</b> Yale School of Medicine
10:45 AM	<b>Patient Perspective</b>
10:55 AM	<b>Vidya Puthenpura, MD, MHS, FAAP</b> Yale School of Medicine
11:10 AM	<b>Marie E. Barnett, PhD</b> Memorial Sloan Kettering Cancer Center
11:25 AM	<b>Natasha N. Frederick, MD, MPH, MST</b> Connecticut Children's
11:40 AM	<b>Q&amp;A and Panel Discussion</b>
12:00 PM	Lunch Break

## Interventional Studies

MODERATOR

**Julia Glade Bender, MD**

Memorial Sloan Kettering Cancer Center

1:00 PM

### Patient Perspective

1:10 PM

**Lisa G. Roth, MD**

Weill Cornell Medicine

1:25 PM

**Emily Slotkin, MD**

Memorial Sloan Kettering Cancer Center

1:40 PM

**Jun J. Mao, MD, MSCE**

Memorial Sloan Kettering Cancer Center

1:55 PM

### Q&A and Panel Discussion

## Breakout Sessions

2:15 PM

Participants will choose a breakout session for informal, interactive discussions on one of the three topics. Room assignments will be announced prior to the program.

### Translational Biology

Moderated by **A. Lindsay Frazier, MD**

### Supportive Care

Moderated by **Katie Devine, PhD, MPH** and **Asher Marks, MD**

### Interventional Studies

Moderated by **Julia Glade Bender, MD**

## Program Wrap-Up & Reception

4:00 PM

### Closing and Breakout Summaries

Participants will reconvene in the auditorium for breakout session summaries and closing remarks.

### Networking Reception

**5:00—6:00 PM • Zuckerman Lobby**

Participants and faculty are invited to attend a networking reception to engage in continued dialogue and collaboration. Hors d'oeuvres and refreshments will be provided.



# Accreditation

Memorial Sloan Kettering Cancer Center is accredited by the Accreditation Council for Continuing Medical Education to provide continuing medical education for physicians.

## AMA Credit Designation Statement

Memorial Sloan Kettering Cancer Center designates this live activity for a maximum of **7.50 AMA PRA Category 1 Credits™**. Physicians should claim only the credit commensurate with the extent of their participation in the activity.

## MOC/CC Recognition Statements

Successful completion of this CME activity, which includes participation in the evaluation component, enables the participant to earn up to 7.50 credits/points in the following certification programs:

- Medical Knowledge MOC points in the American Board of Internal Medicine's (ABIM) Maintenance of Certification Assessment Recognition Program; and
- Lifelong Learning & Self-Assessment MOC points for the American Board of Pediatrics (ABP) Maintenance of Certification program

MOC/CC points will be reported to your board within 45 days of course completion.

## Continuing Education for Licensed Psychologists in New York State\*

***This event offers 7.50 NYS Psychology Contact Hours.***

Memorial Sloan Kettering Cancer Center is recognized by the New York State Education Department State Board for Psychology as an approved provider of continuing education for licensed psychologists #PSY-0166 New York State Social Work Contact Hours\* (Pending application) ANCC CNE Contact Hours (Pending application)

\*Not all states accept New York State Contact Hours. Please check with the licensing board in your state for guidance on their acceptance of the credit types offered for this course.

Applications for **New York State Social Work Contact Hours** and **ANCC CNE Contact Hours** are pending approval.



Memorial Sloan Kettering  
Cancer Center





The **Lisa and Scott Stuart Center for Adolescent and Young Adult (AYA) Cancers** at Memorial Sloan Kettering Cancer Center (MSK) is a comprehensive clinical and research center dedicated to transforming the care and improving outcomes for patients between the ages of 15 and 39 who are diagnosed with cancer.

The center recognizes that AYAs face specific challenges related to cancer treatment, including understanding their medical options, managing treatment side effects, dealing with physical and emotional changes, and navigating issues related to fertility, education, finances, and relationships. The dedicated team of AYA professionals provide one on one and group support for patients throughout their cancer journey.

Our unique psychosocial support program offers patients opportunities to connect in person or virtually through the Lounge recreation space located at Memorial Hospital, through virtual programs and events or in our secure social media app, the Lounge.

The center supports and engages research professionals across MSK and the region to develop treatment options, unique interventions and a better understanding of AYA cancers in general.



Memorial Sloan Kettering  
Cancer Center