



# 2026 Advanced Therapeutics for Brain Metastasis

Moving the Needle and Controversies  
at the Cutting Edge

September 9, 2026  
*Complimentary Virtual Course*



Memorial Sloan Kettering  
Cancer Center



# Overview

This **complimentary didactic and case-based course** will provide a comprehensive update on the latest advances in the treatment and research of brain metastases. Aimed at clinicians and translational scientists, this course will provide an update on CNS-specific outcomes from both molecular and traditional cancer histology viewpoints.

Recent evidence for brain metastasis activity will be highlighted for key medical targets (e.g. Her2, EGFR, KRAS, CDK, BRAF, and ALK), and leading experts will review brain metastasis prognosis across the cancers commonly resulting in this (lung, breast, and melanoma).

A dedicated session on recent developments in local therapy will review the role of laser interstitial thermal therapy, brachytherapy and external beam radiation techniques. In recognition of the many complex treatment interactions imposed by multimodality treatment often necessary, a 'Key Controversies' session will speak to major areas of clinical difficulty, for example, how to distinguish on recurrent disease from radiation necrosis on imaging studies, when to change therapy with CNS-only progressive disease, which leptomeningeal metastasis interventions are currently worthwhile, and special considerations regarding steroid use and radiation therapy for patients requiring immunotherapy.

Key scientists will discuss promising translational and clinical trial approaches including targeting metastasis-initiating cells and window-of-opportunity studies. Given the special challenge of early detection, a dedicated session will cover state-of-the art molecular imaging techniques, the evidence for/against imaging surveillance in standard-risk cancers, and the current state of liquid biopsy.



Neurosurgeon Nelson Moss, MD (left), and surgical technologist Andrew Derbidge (right) perform intraoperative brachytherapy as part of multidisciplinary care for patients with brain metastases at MSK.

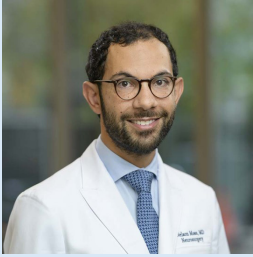
A roundtable discussion with participants from several centers will share their experiences and best practices with multidisciplinary team care and discuss areas for improvement. Finally, a multidisciplinary tumor board will review multifaceted cases, highlighting the interplay of various treatment options.

There will be ample opportunity for networking with speakers and other participants in this virtual meeting.

This activity has been approved for **AMA PRA Category 1 Credit(s)<sup>TM</sup>**, American Board of Internal Medicine (**ABIM**) Maintenance of Certification (MOC) Points, and American Board of Pathology (**ABPath**) Continuing Certification (CC) Credit. View the **Accreditation** section for more information.



This course is **complimentary for all participants**.  
**Scan here** for full details and registration or visit:  
[msk.org/BrainMetsSymposium](https://msk.org/BrainMetsSymposium)



## Course Director

### **Nelson Moss, MD**

Co-Director, Multidisciplinary Brain Metastasis Program  
Associate Attending  
Department of Neurosurgery  
Memorial Sloan Kettering Cancer Center

---

## Course Faculty

### **Nathalie Agar, PhD**

Brigham and Women's Hospital

### **Manmeet Singh Ahluwalia, MD**

Baptist Health Herbert Wertheim  
Cancer Institute

### **Ayal Aizer, MD, MHS**

Dana-Farber Cancer Institute

### **Carey K. Anders, MD**

Duke Cancer Institute

### **Chetan Bettgowda, MD, PhD**

Johns Hopkins Medicine

### **Joshua A. Budhu, MD, MS, MPH**

Memorial Sloan Kettering

### **Veronica Chiang, MD, FAANS**

Yale New Haven Hospital

### **Norbert Galldiks, MD**

University of Cologne

### **Brandon Imber, MD, MA**

Memorial Sloan Kettering

### **Michelle H. Kim, MD, MS, FACS**

University of Michigan

### **Priya U. Kumthekar, MD**

Northwestern University

### **Julia Maués**

GRASP

### **Minesh Mehta, MD**

Miami Cancer Institute

### **Josh Neman-Ebrahim, PhD**

University of Southern California

### **Isabella C. Glitza Oliva, MD, PhD, MS**

MD Anderson Cancer Center

### **Matthias Preusser, MD**

Vienna General Hospital

### **Luke R.G. Pike, MD, DPhil**

Memorial Sloan Kettering

### **Tanya Michelle Prowell, MD**

Johns Hopkins Medicine

### **Gregory J. Riely, MD, PhD**

Memorial Sloan Kettering

### **Andrew D. Seidman, MD**

Memorial Sloan Kettering

**Viviane Tabar, MD**

Memorial Sloan Kettering

**Paolo Tarantino, MD**

Dana-Farber Cancer Institute

**Hussein A. Tawbi, MD, PhD**

MD Anderson Cancer Center

**Michael Weller, MD**

University Hospital Zurich

**Jessica A. Wilcox, MD**

Memorial Sloan Kettering

**Robert J. Young, MD**

Memorial Sloan Kettering

**Yao Yu, MD**

Memorial Sloan Kettering

**Gelareh Zadeh, MD, PhD**

Mayo Clinic

Additional faculty details are available in the **Faculty** section of this brochure.

Memorial Sloan Kettering Cancer Center adheres to the ACCME's Standards for Integrity and Independence in Accredited Continuing Education. Any individuals in a position to control the content of a CE activity, including faculty, planners, reviewers, or others are required to disclose all financial relationships with ineligible companies (commercial interests). All relevant financial relationships are mitigated prior to the commencement of the activity.



# Agenda

All times listed in the agenda are Eastern Daylight Time (EDT).

TIME	SESSIONS
7:55 a.m.	Virtual Check-in
8:00 a.m.	<b>Welcome and Introduction</b> Viviane Tabar, MD

## Keynote Presentations

MODERATOR: Nelson Moss, MD

8:10 a.m.	 <b>Brain Metastases: From Population Health to Precision Medicine</b> Matthias Preusser, MD
8:30 a.m.	 <b>Patient Perspectives on Living with Brain Metastases</b> Julia Maués
8:35 a.m.	<b>Q&amp;A and Panel Discussion</b>

## Therapeutic Frontiers: Disease-Specific Updates

MODERATOR: Priya U. Kumthekar, MD

8:40 a.m.	<b>Breast Cancer: Navigating the ADC Era — Efficacy, Toxicity, and Sequencing</b> Carey K. Anders, MD
8:55 a.m.	<b>Melanoma Brain Metastases: Systemic Therapy Update</b> Hussein A. Tawbi, MD, PhD
9:10 a.m.	<b>Thoracic Oncology Update</b> Gregory J. Riely, MD, PhD
9:25 a.m.	<b>Q&amp;A and Panel Discussion</b>
9:35 a.m.	Break

## Innovation in Local Therapies

MODERATOR: Luke R.G. Pike, MD, DPhil

- 9:45 a.m. **Modern SRS:  
Fractionation Strategies and  
Combination with Systemic Therapy**  
Michelle Kim, MD
- 10:00 a.m. **Cs-131 Brachytherapy for Recurrent Brain Metastases**  
Nelson Moss, MD  
Brandon Imber, MD, MA
- 10:15 a.m. **Laser Interstitial Thermal Therapy:  
Expanding Indications and Long-term Outcomes**  
Veronica Chiang, MD, FAANS
- 10:30 a.m. **Surgical Decision-Making in the Age of Effective  
Systemic Therapy**  
Gelareh Zadeh, MD, PhD
- 10:45 a.m. **Q&A and Panel Discussion**
- 10:50 a.m. Break

## Leptomeningeal Disease: From Biology to Trials

MODERATOR: Jessica A. Wilcox, MD

- 11:00 a.m. **Biology, Imaging, and Pathophysiology of  
Leptomeningeal Disease**  
Michael Weller, MD
- 11:20 a.m. **CSF Liquid Biopsy and Biomarkers for  
Leptomeningeal Disease**  
Chetan Bettegowda, MD, PhD
- 11:40 a.m. **Q&A and Panel Discussion**
- 11:50 a.m. Break

## Controversies in 2026

MODERATOR: Nelson Moss, MD

- 12:00 p.m. **DEBATE**  
**Upfront Brain-Directed Therapy vs  
Systemic-First Approaches**  
Brain-Directed: Luke R.G. Pike, MD, DPhil  
Systemic-First: Manmeet Singh Ahluwalia, MD

- 12:20 p.m. **Breast Cancer Controversies in the ADC Era**  
Paolo Tarantino, MD
- 12:35 p.m. **Where Radiation Fits in the Era of Potent Systemic Therapy**  
Ayal Aizer, MD, MHS
- 12:50 p.m. **Q&A and Panel Discussion**
- 1:00 p.m. Lunch Break

## Managing Complexity: Toxicity in The Modern Era

**MODERATOR:** Joshua A. Budhu, MD, MS, MPH

- 1:50 p.m. **ADC-Associated CNS Toxicity:  
Mechanism, Recognition, and Management**  
Yao Yu, MD
- 2:05 p.m. **Immunotherapy-Related CNS Toxicity:  
Real-World Data and Management**  
Isabella C. Glitza Oliva, MD, PhD, MS
- 2:20 p.m. **Advanced Imaging:  
AI and Radiomics for Distinguishing Progression  
from Treatment Effect**  
Norbert Galldiks, MD
- 2:35 p.m. **Q&A and Panel Discussion**
- 2:45 p.m. Break

## Scientific Frontiers: Bench to Bedside

**MODERATOR:** Minesh Mehta, MD

- 2:55 p.m. **Microenvironment and Metastatic Niche:  
New Therapeutic Targets**  
Josh Neman-Ebrahim, PhD
- 3:15 p.m. **Brain Metastasis Microenvironment**  
Nathalie Agar, PhD
- 3:30 p.m. **To be announced**  
Tanya Michelle Prowell, MD
- 3:45 p.m. **Q&A and Panel Discussion**

# Brain Metastasis Microenvironment and Translational Opportunities

**MODERATOR:** Nathalie Agar, PhD

- 3:55 p.m.     **FDA Perspectives on Brain Metastasis Clinical Trials: Endpoints, Design, and Regulatory Considerations**  
Tanya Michelle Prowell, MD
- 4:10 p.m.     **Q&A and Panel Discussion**

## Multidisciplinary Tumor Board

**MODERATORS:** Nelson Moss, MD and Jessica A. Wilcox, MD

- 4:15 p.m.     Brandon Imber, MD, MA  
Gregory J. Riely, MD, PhD  
Andrew D. Seidman, MD  
Robert J. Young, MD
- 5:00 p.m.     **Closing Remarks and Adjournment**  
Nelson Moss, MD

# Accreditation

Memorial Sloan Kettering Cancer Center is accredited by the Accreditation Council for Continuing Medical Education to provide continuing medical education for physicians.

## AMA Credit Designation Statement

Memorial Sloan Kettering Cancer Center designates this live activity for a maximum of **7.50 AMA PRA Category 1 Credits™**. Physicians should claim only the credit commensurate with the extent of their participation in the activity.

## MOC/CC Recognition Statements

Successful completion of this CME activity, which includes participation in the evaluation component, enables the participant to earn up to:

- 7.50 Medical Knowledge MOC points in the American Board of Internal Medicine's (**ABIM**) Maintenance of Certification (MOC) program; and
- 7.50 Lifelong Learning (CME) credits in the American Board of Pathology's (**ABPath**) Continuing Certification program.

It is the CME activity provider's responsibility to submit participant completion information to ACCME for the purpose of granting ABIM or ABPath MOC/CC credit.



This course is **complimentary for all participants**.  
**Scan here** for full details and registration or visit:  
[msk.org/BrainMetsSymposium](https://msk.org/BrainMetsSymposium)

# Faculty

## Guest Faculty



### **Nathalie Agar, PhD**

Associate Professor of Neurosurgery and Radiology  
Harvard Medical School  
Daniel E. Ponton Distinguished Chair in Neurosurgery  
Brigham and Women's Hospital



### **Manmeet Singh Ahluwalia, MD**

Chief Scientific Officer  
Chief of Medical Oncology  
Deputy Director  
Fernandez Family Endowed Chair in Cancer Research  
Baptist Health Herbert Wertheim Cancer Institute



### **Ayal Aizer, MD, MHS**

Associate Professor of Radiation Oncology  
Harvard Medical School  
Senior Physician  
Director, Central Nervous System Radiation Oncology  
Dana-Farber Cancer Institute



### **Carey K. Anders, MD**

Professor of Medicine  
Chief, Division of Medical Oncology  
Member, Duke Cancer Institute  
Duke University



### **Chetan Bettegowda, MD, PhD**

Director, Department of Neurosurgery  
Harvey Cushing Professor of Neurosurgery  
Neurosurgeon-in-Chief, The Johns Hopkins Hospital  
Director, Reza Khatib Brain Tumor Center  
Director, Comprehensive Brain Tumor Center  
Johns Hopkins Medicine



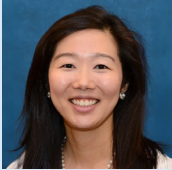
### **Veronica Chiang, MD, FAANS**

Neurosurgeon  
Director, Gamma Knife Center  
Yale New Haven Hospital



**Norbert Galdiks, MD**

Professor for Translational Imaging in Neuro-Oncology  
Senior Physician  
Head of the Neuro-Oncological Specialty Consultation  
Head of Neuro-Oncology Working Group  
University of Cologne



**Michelle Kim, MD**

Associate Professor, Department of Radiation Oncology  
University of Michigan  
Co-Chair, Neuro-Oncology Clinical Research Team  
University of Michigan Rogel Cancer Center



**Priya U. Kumthekar, MD**

Professor, Neurology/Neuro-Oncology and  
Medicine/Hematology and Oncology  
Northwestern University Feinberg School of Medicine



**Julia Maués**

Co-Founder and Patient Advocate  
GRASP



**Minesh Mehta, MD**

Deputy Director and Chief of Radiation Oncology  
Miami Cancer Institute, Baptist Health



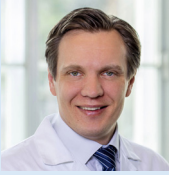
**Josh Neman-Ebrahim, PhD**

Associate Professor of Neurological Surgery,  
Physiology & Neuroscience  
Director, Cancer Biology & Genomics Doctoral Program  
Scientific Director, USC Brain Tumor Center  
Co-leader, Neuro-oncology Disease Affinity Group  
Director, Cancer Research Training and Education Coordination  
University of Southern California



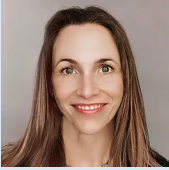
**Isabella C. Glitza Oliva, MD, PhD, MS**

Professor, Department of Melanoma Medical Oncology  
Patient Experience Officer,  
Department of Melanoma Medical Oncology  
Associate Medical Director, Melanoma/Skin Center  
Director, Leptomeningeal Disease Research Program  
The University of Texas MD Anderson Cancer Center



**Matthias Preusser, MD**

Professor of Internal Oncology  
Head, Division of Oncology / Clinical Division of Oncology,  
Department of Medicine  
MedUni Vienna and Vienna General Hospital



**Tanya Michelle Prowell, MD**

Breast Cancer Scientific Liaison,  
Office of Hematology & Oncology Products  
U.S. Food and Drug Administration (FDA)  
Associate Professor of Oncology  
Johns Hopkins Medicine



**Paolo Tarantino, MD**

Research Fellow in Medicine  
Dana-Farber Cancer Institute  
Advanced Research Fellow, Breast Oncology Program  
Harvard Medical School



**Hussein A. Tawbi, MD, PhD**

Executive Director,  
Immuno-Oncology Clinical Drug Development Program  
Head, IO Drug Development, Therapeutics Discovery Division  
The University of Texas MD Anderson Cancer Center



**Michael Weller, MD**

Clinic Director, Department of Neurology  
University Hospital Zürich



**Gelareh Zadeh, MD, PhD**

Chair, Department of Neurologic Surgery  
Professor, Mayo Clinic College of Medicine and Science  
William J. and Charles H. Mayo Professorship  
Mayo Clinic

## MSK Faculty



### **Joshua A. Budhu, MD, MS, MPH**

Nicholls-Biondi Diversity Clinical  
Scientist Faculty Scholar  
Assistant Attending, Brain Tumor Service  
Department of Neurology



### **Brandon Imber, MD, MA**

Assistant Attending  
Department of Radiation Oncology



### **Luke R.G. Pike, MD, DPhil**

Director, Brain Radiation Oncology  
Assistant Attending  
Department of Radiation Oncology



### **Gregory J. Riely, MD, PhD**

Ning Zhao and Ge Li Chair in Lung Cancer Research  
Attending, Thoracic Oncology Service  
Department of Medicine



### **Andrew D. Seidman, MD**

Attending, Breast Medicine Service  
Department of Medicine



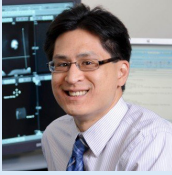
### **Viviane Tabar, MD**

Chair, Department of Neurosurgery  
Theresa Feng Chair in Neurosurgical Oncology



### **Jessica A. Wilcox, MD**

Assistant Attending, Brain Tumor Service  
Department of Neurology



**Robert J. Young, MD**

Attending  
Head, Brain Imaging  
Department of Radiology



**Yao Yu, MD**

Assistant Attending  
Director of Leptomeningeal Disease  
Department of Radiation Oncology



This course is **complimentary for all participants.**  
**Scan here** for full details and registration or visit:  
**[msk.org/BrainMetsSymposium](https://msk.org/BrainMetsSymposium)**



Memorial Sloan Kettering  
Cancer Center

**Continuing Medical Education**

**VISIT US ONLINE**

[msk.org/cme](https://msk.org/cme)

[Instagram/MSKcontinuingmedicaleducation](https://www.instagram.com/MSKcontinuingmedicaleducation)

[LinkedIn /MSK-CME](https://www.linkedin.com/company/MSK-CME)

[Facebook/MSKCME](https://www.facebook.com/MSKCME)

[X/MSKCME](https://twitter.com/MSKCME)