

September 26, 2025 | New York City

Optimizing Gastrointestinal Care in the Cancer Patient

A Gastroenterologist's Toolkit



Memorial Sloan Kettering
Cancer Center

Overview

Early recognition and management of precancerous gastrointestinal (GI) disorders are essential to cancer prevention and early detection. As our understanding of the pathogenesis of these conditions evolves, treatment algorithms continue to advance. In parallel, emerging endoscopic techniques play an increasingly critical role—not only in surveillance, diagnosis, and treatment of early-stage disease, but also in the palliative care of patients with advanced GI malignancies.

This one-day course at Memorial Sloan Kettering Cancer Center (MSK) will provide a comprehensive update on the diagnosis, management, and surveillance of pre-cancerous and malignant GI disorders, covering the luminal GI tract, liver, and pancreatobiliary system. Topics will include Barrett's esophagus, gastric intestinal metaplasia, *Helicobacter pylori*, pancreatic cysts, and inflammatory bowel disease. The course will also explore endoscopic management of GI malignancies, including the role of EUS, as well as the treatment of luminal obstructions, leaks, fistulae, perforations, and endoscopic submucosal dissection (ESD).

Additional sessions will cover nutrition and GI symptom management, including chemotherapy- and radiation-induced GI toxicity, along with GI and interventional radiology (IR) approaches to managing GI bleeding in cancer patients. Liver-related topics will include the evaluation and treatment of abnormal liver chemistries, screening for hepatocellular carcinoma/cholangiocarcinoma, surgical management for cancer in cirrhotic patients, and IR management of portal hypertension complications.

The program will feature expert-led didactic lectures and interactive, case-based discussions to support practical application of key concepts in clinical practice.

Target Audience

This course is intended for physicians and healthcare professionals—including gastroenterologists, oncologists, geneticists, pathologists, advanced practice providers, nurses, fellows, and residents—who care for patients with gastrointestinal, liver, and pancreaticobiliary disorders.

This program will be held **exclusively in person** at Memorial Sloan Kettering's Zuckerman Research Center (a virtual attendance option will not be available.)

Educational Objectives

At the conclusion of this course, learners will be able to:

- Recognize the diagnosis and management of immunotherapy related GI complications
- Describe the role of endoscopy in the surveillance, diagnosis, management and palliation of premalignant and malignant GI disorders
- Discuss the management of GI bleeding, nutrition and chemotherapy and radiation-induced GI toxicity in the cancer patient
- Explain the evaluation and management of abnormal liver chemistries, screening for hepatocellular carcinoma/ cholangiocarcinoma and portal hypertension related complications in the cancer patient

Post-Course Resources

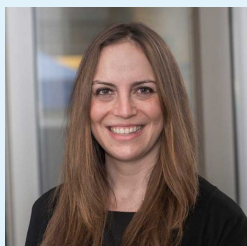
Following the conclusion of the program, registrants will receive access to a syllabus that includes PDF versions of faculty presentation slides and recorded session videos.

MSK Course Directors



Arnold J. Markowitz, MD, FASGE, NYSGEF

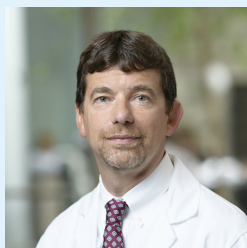
Attending, Gastroenterology, Hepatology and Nutrition Service



Robin Mendelsohn, MD, FASGE, NYSGEF

Associate Attending, Gastroenterology, Hepatology and Nutrition Service
Co-Director, Center for Young Onset Colorectal and Gastrointestinal Cancers

MSK Course Planning Committee



Mark A. Schattner, MD, FASGE, AGAF

Chief, Gastroenterology, Hepatology and Nutrition Service



Natalia Zbib, MD

Fellow, Gastroenterology, Hepatology and Nutrition Service

Memorial Sloan Kettering Cancer Center adheres to the ACCME's Standards for Integrity and Independence in Accredited Continuing Education (CE). Any individuals in a position to control the content of a CE activity, including faculty, planners, reviewers, or others are required to disclose all financial relationships with ineligible companies (commercial interests). All relevant financial relationships is mitigated prior to the commencement of the activity.

Invited Course Faculty

Lorna Mills Dove, MD

Professor of Medicine (in Surgery)
Medical Director, Adult Liver Transplant - Center for Liver Disease and Transplantation
Director of Clinical Hepatology
Columbia University Medical Center

MSK Course Faculty

Hassan Azhari, MD

Assistant Attending, Gastroenterology,
Hepatology and Nutrition Service

Jacques Beauvais, MD

Assistant Attending, Gastroenterology,
Hepatology and Nutrition Service

Delia Calo, MD

Assistant Attending, Gastroenterology,
Hepatology and Nutrition Service

Anne Covey, MD

Attending, Interventional Radiology
Service

David Faleck, MD

Associate Attending, Gastroenterology,
Hepatology and Nutrition Service;
Director of Inflammatory and
Immune-Related Bowel Diseases

Monika Laszkowska, MD, MS

Assistant Attending, Gastroenterology,
Hepatology and Nutrition Service

Seung Eun (Grace) Lee, MD

Assistant Attending, Gastroenterology,
Hepatology and Nutrition Service

Heather Lim, PA

Advanced Practice Provider,
Gastroenterology, Hepatology and
Nutrition Service

Rachel Niec, MD, PhD, MS

Assistant Attending, Gastroenterology,
Hepatology and Nutrition Service

Makoto Nishimura, MD

Attending, Gastroenterology,
Hepatology and Nutrition Service

Vineet Syan Rolston, MD

Assistant Attending, Gastroenterology,
Hepatology and Nutrition Service

Pari Shah, MD, MSCE

Associate Attending, Gastroenterology,
Hepatology and Nutrition Service

Alice Wei, MD CM, MSc

Attending, Hepatopancreatobiliary
Service; Co-Director, Surgical Initiatives,
David M. Rubenstein Center for
Pancreatic Cancer Research

Ken Zhao, MD

Assistant Attending, Interventional
Radiology Service

MSK Case Presenters

Taqwa Ahmed, MD

Fellow, Gastroenterology, Hepatology
and Nutrition Service

Shirley Jiang, MD

Advanced Endoscopy Fellow,
Gastroenterology, Hepatology and
Nutrition Service

Arameh Mousakhanian, MD

Fellow, Gastroenterology, Hepatology
and Nutrition Service

Schedule

| TIME | SESSION / FACULTY |
|---------|---|
| 7:00 AM | Check-in and Breakfast |
| 8:00 AM | Course Welcome and Introductory Remarks Arnold J. Markowitz, MD Robin Mendelsohn, MD |
| 8:05 AM | Introduction of Sidney J Winawer, MD Lectureship Mark A. Schattner, MD |
| 8:10 AM | Sidney J Winawer, MD Lectureship Management of Immunotherapy-Related Gastrointestinal Adverse Effects David Faleck, MD Hassan Azhari, MD |

Management of Pre-Cancerous Lesions

| | |
|-----------|--|
| MODERATOR | Mark A. Schattner, MD |
| 9:10 AM | Barrett's Esophagus Pari Shah, MD, MSCE |
| 9:25 AM | Gastric Intestinal Metaplasia/H. Pylori Monika Laszkowska, MD, MS |
| 9:40 AM | Pancreas Cysts Heather Lim, PA |
| 9:55 AM | Inflammatory Bowel Disease Surveillance Rachel Niec, MD, PhD, MS |
| 10:10 AM | Case Presentation Natalia Zbib, MD |
| 10:25 AM | Panel Discussion and Q&A Pari Shah, MD, MSCE Monika Laszkowska, MD, MS Heather Lim, PA Rachel Niec, MD, PhD, MS |
| 10:40 AM | Break |

Endoscopic Management of Gastrointestinal Malignancies

| | |
|-----------|---|
| MODERATOR | To Be Announced |
| 11:00 AM | Role of Endoscopic Ultrasound Seung Eun (Grace) Lee, MD |
| 11:15 AM | Luminal Obstruction Vineet Syan Rolston, MD |

| | |
|----------|---|
| 11:30 AM | Leaks, Fistulae, and Perforations Jacques Beauvais, MD |
| 11:45 AM | Role of Endoscopic Submucosal Dissection Makoto Nishimura, MD |
| 12:00 PM | Case Presentation Shirley Jiang, MD |
| 12:15 PM | Panel Discussion and Q&A Seung Eun (Grace) Lee, MD Vineet Syan Rolston, MD Jacques Beauvais, MD Makoto Nishimura, MD |
| 12:30 PM | Lunch Break |

Nutrition and Gastrointestinal Symptom Management in the Cancer Patient

| | |
|-----------|--|
| MODERATOR | Robin Mendelsohn, MD |
| 1:30 PM | Enteral and Parenteral Nutrition Robin Mendelsohn, MD |
| 1:45 PM | Chemotherapy and Radiation-Induced Gastrointestinal Toxicity Arnold J. Markowitz, MD |
| 2:00 PM | Gastrointestinal Bleeding Delia Calo, MD |
| 2:15 PM | Role of Interventional Radiology in Malignant Gastrointestinal Bleeding Anne Covey, MD |
| 2:30 PM | Case Presentation Arameh Mousakhanian, MD |
| 2:45 PM | Panel Discussion and Q&A Robin Mendelsohn, MD Arnold J. Markowitz, MD Delia Calo, MD Anne Covey, MD |
| 3:00 PM | Break |

Liver Disease and Cancer

| | |
|-----------|--|
| MODERATOR | Arnold J. Markowitz, MD |
| 3:20 PM | Abnormal Liver Chemistries in the Cancer Patient Lorna Mills Dove, MD |
| 3:35 PM | Screening for Hepatocellular Carcinoma/Cholangiocarcinoma in the Liver Patient Hassan Azhari, MD |

| | |
|---------|---|
| 3:50 PM | Surgical Management of Cancer in the Cirrhotic Patient Alice Wei, MD CM, MSc |
| 4:05 PM | Role of Interventional Radiology in Complications of Portal Hypertension in the Cancer Patient Ken Zhao, MD |
| 4:20 PM | Case Presentation Taqwa Ahmed, MD |
| 4:35 PM | Panel Discussion and Q&A Hassan Azhari, MD Alice Wei, MD CM, MSc Ken Zhao, MD |
| 4:50 PM | Closing Remarks Arnold J. Markowitz, MD Robin Mendelsohn, MD |
| 4:55 PM | Adjournment |

Accreditation

Memorial Sloan Kettering Cancer Center is accredited by the Accreditation Council for Continuing Medical Education to provide continuing medical education for physicians.

AMA Credit Designation Statement

Memorial Sloan Kettering Cancer Center designates this live activity for a maximum of **7.00 AMA PRA Category 1 Credits™**. Physicians should claim only the credit commensurate with the extent of their participation in the activity.

MOC/CC Recognition Statements

Successful completion of this CME activity, which includes participation in the evaluation component, enables the participant to earn up to:

- 7.00 Medical Knowledge MOC points in the American Board of Internal Medicine's (**ABIM**) Maintenance of Certification (MOC) program; and
- 7.00 Lifelong Learning (CME) credit towards the American Board of Pathology's (**ABPath**) Continuing Certification program; and
- 7.00 CME and Self-Assessment requirements of the American Board of Surgery's (**ABS**) Continuous Certification program.

It is the CME activity provider's responsibility to submit participant completion information to ACCME for the purpose of granting ABIM, ABPath or ABS MOC/CC credit.

An application for **ANCC Nursing Contact Hours** is currently under review.



Registration

This course will be offered **exclusively in person**; a virtual attendance option will not be available.

Register online: msk.org/GastroCourse

Registration Fees

- Physicians (MDs, PhDs, DOs) \$300
- Advanced Practice Providers: \$250
- Nursing and Other Healthcare Professionals: \$200
- Residents, Fellows, and Students*: \$100
- Industry Professionals**: \$525
- MSK Employees: Complimentary

**Registration fees of \$100 or less are non-refundable.*

***An “industry professional” is defined as any individual—regardless of profession (e.g., MD, PhD, APP, RN)—who is employed by an ineligible company.*

Registration Discounts: Discounted registration is available for specific groups. If eligible, you will receive further instructions and a promotion code to use during registration.

Meals and Accommodations: Continental breakfast, lunch, and refreshment breaks will be provided to participants. If you have dietary restrictions or require special accommodations to attend in person, please contact us at cme@mskcc.org at least one week prior to the course.

Cancellation Policy: For details regarding our cancellation policy, please visit the course website.



Memorial Sloan Kettering
Cancer Center



Memorial Sloan Kettering
Cancer Center