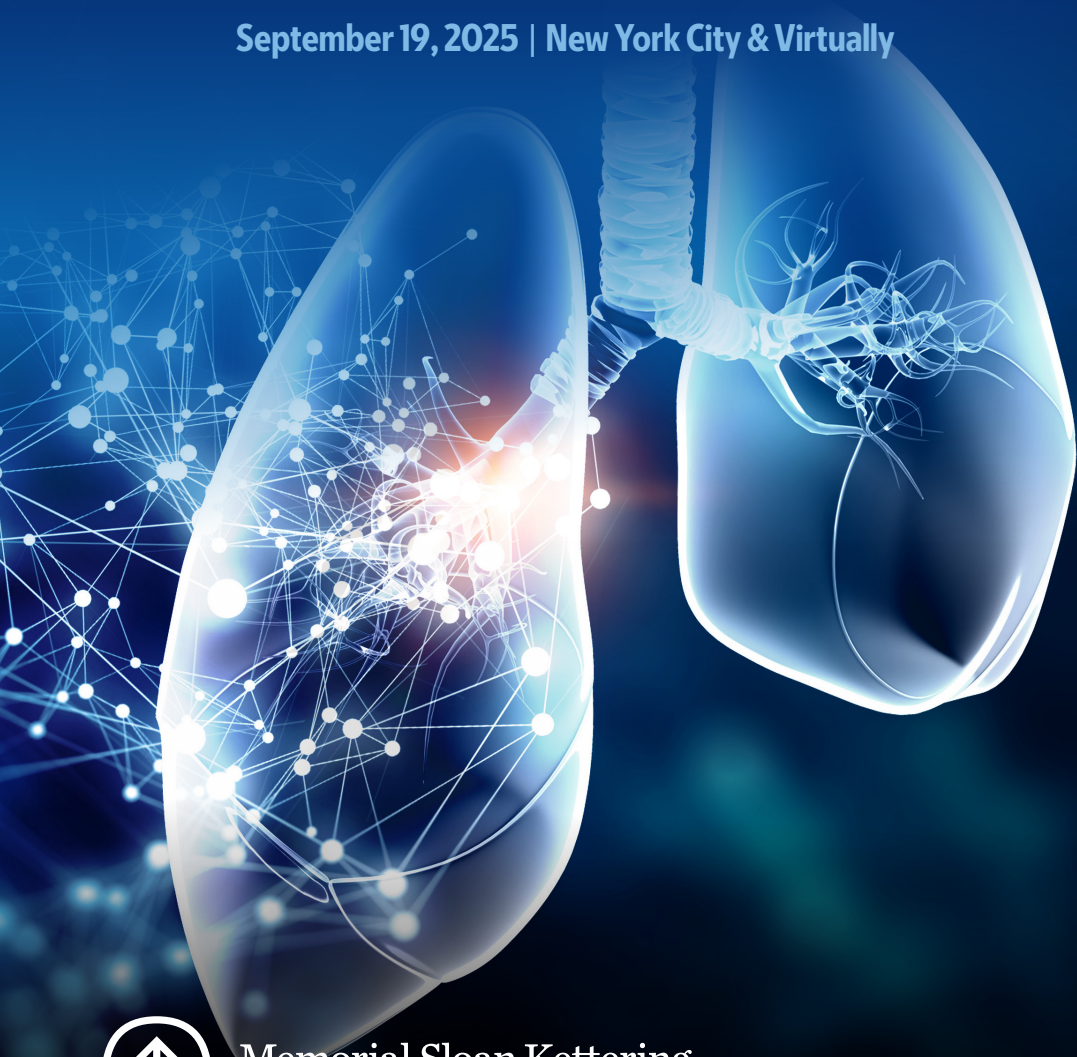


2025 MSK Pulmo-Oncology Symposium

September 19, 2025 | New York City & Virtually



Memorial Sloan Kettering
Cancer Center



Overview

Pulmo-oncology is an emerging discipline at the intersection of pulmonary medicine and oncology, playing a critical role in the clinical care of patients with cancer.

The respiratory system is often impacted by direct cancer involvement and toxicities stemming from the use of anti-neoplastic agents. Pre-existing pulmonary disorders affect patient outcomes and management decisions. Effective clinical management of pulmonary complications of cancer and its therapies requires an interdisciplinary approach.

Now in its third year, this symposium at Memorial Sloan Kettering Cancer Center (MSK) brings together global experts from multiple disciplines to present the latest advances in cancer therapies and best practices in the evaluation and management of lung disease. Through state-of-the-art presentations and interdisciplinary, case-based discussions, this symposium will explore key topics related to the care of cancer patients with pulmonary comorbidities and complications arising from cancer or its treatments.

Key topics for this year's program include:

- State-of-the-art updates in lung cancer treatment
- Navigating immune-mediated lung toxicities related to cancer therapy
- Clinical strategies for prevention, symptom management, and co-existing conditions

Complex cases will be presented throughout, with dedicated time for interactive, multidisciplinary panel discussions to encourage meaningful engagement between participants and the faculty.

Register online: msk.org/Pulmo-Onc

Target Audience

This symposium is intended for healthcare professionals in pulmonology, hematology/oncology, and related disciplines involved in the care of cancer patients or those with a special interest in this area.

Educational Objectives

- Describe the role of the pulmonologist in diagnosis and management of cancer related pulmonary complications
- Identify state of the art diagnostic and treatment strategies for management of lung cancer
- Implement strategies for diagnosis and management of non-infectious pulmonary complications of stem cell transplant and other cancer directed therapies
- Discuss multidisciplinary approach in complex patients
- Implement approaches to symptom management and prevention of cancer related pulmonary complications
- Gain insight in sleep disordered breathing in the cancer patient

Post-Symposium Resources

Registrants will receive access to a syllabus containing PDF versions of faculty presentation slides and recorded session videos after the symposium concludes.

Symposium Location

Zuckerman Research Center
417 East 68th Street
New York City

Virtual participation will be
offered through Zoom.



Memorial Sloan Kettering
Cancer Center



MSK Symposium Directors



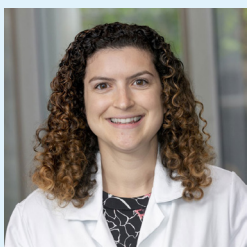
Leontine J.R. van Elden, MD, PhD

Associate Attending, Pulmonary Service;
Assistant Professor of Clinical Medicine,
Weill Cornell Medical College



Elizabeth Yogiaveetil, MD

Assistant Attending, Pulmonary Service;
Assistant Professor of Clinical Medicine,
Weill Cornell Medical College



Christina M. Hess, AGACNP-BC

Nurse Practitioner, Pulmonary Service

MSK Symposium Planning Committee



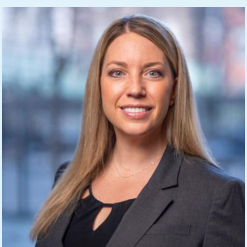
Michelle Cavuoto, MA, RN, OCN®

Clinical Nurse IV



Mohit Chawla, MD, FCCP

Chief, Pulmonary Service



Catherine Oberg, MD

Assistant Attending, Pulmonary Service



Gopi I. Patel, MD

Assistant Attending, Pulmonary Service

Invited Symposium Faculty

Jarushka Naidoo, MD

Consultant Medical Oncologist
Beaumont RCSI Cancer Centre,
Beaumont Hospital
Dublin, Ireland
Adjunct Assistant Professor of Oncology,
Johns Hopkins University
Baltimore, Maryland, USA

Miranda Tan, DO

Clinical Associate Professor, Psychiatry
and Behavioral Sciences - Sleep Medicine
Stanford University School of Medicine
Stanford, CA, USA

Ajay Sheshradri, MD, MSCI

Attending, Pulmonary Medicine
MD Anderson Cancer Center
Houston, Tx, USA

MSK Symposium Faculty

Craig D. Blinderman, MD, MA, FAAHPM

Chief Attending
Supportive Care Service

Matthew Bott, MD

Associate Attending
Thoracic Surgery Service

Alissa J. Cooper, MD

Assistant Attending
Thoracic Oncology Service

Daniel Gomez, MD, MBA

Attending
External Beam Radiotherapy Service

Andrew Harris, MD

Associate Attending
Pediatric Bone Marrow Transplant Service

Elena Mead, MD

Assistant Attending
Critical Care Medicine Service

Timothy Miller, MD

Pulmonary and Critical Care
Medicine Fellow

Jamie S. Ostroff, PhD

Member and Attending Psychologist;
Chief, Behavioral Sciences Service and
Vice Chair for Research;
Director, Tobacco Treatment Program
Department of Psychiatry & Behavioral
Sciences

Rastko Rakočević, MD, MSc

Assistant Attending
Pulmonary Service

Timothy Tuitan, MD

Assistant Attending
Hospital Medicine

Memorial Sloan Kettering Cancer Center adheres to the ACCME's Standards for Integrity and Independence in Accredited Continuing Education (CE). Any individuals in a position to control the content of a CE activity, including faculty, planners, reviewers, or others are required to disclose all financial relationships with ineligible companies (commercial interests). All relevant financial relationships is mitigated prior to the commencement of the activity.

Schedule

TIME	SESSION / FACULTY
7:00 AM	In-Person Attendee Check-in and Breakfast
7:50 AM	Virtual Attendee Check-in
7:55 AM	Welcome and Introductory Remarks Leontine J.R. van Elden, MD, PhD
8:00 AM	Keynote Address  Sleep-Disordered Breathing in Cancer Patients Miranda Tan, DO Stanford University School of Medicine

SESSION I

MODERATORS	Catherine Oberg, MD Rastko Rakocevic, MD, MSc
9:00 AM	New Drugs and Combos in Lung Cancer Land Alissa J. Cooper, MD
9:25 AM	Neoadjuvant Treatment Strategies in Resectable Neoadjuvant: The Surgical Perspective Matthew Bott, MD
9:45 AM	Novel Endobronchial Approaches to Lung Cancer Therapy Catherine Oberg, MD
10:05 AM	Strategies for the Mitigation of Radiation Pneumonitis and the Role of Multidisciplinary Collaboration: A Radiation Oncologist's Perspective Daniel Gomez, MD, MBA
10:25 AM	Q&A and Discussion
10:30 AM	Complex Case Presentations and Panel Discussion Rastko Rakocevic, MD, MSc (CASE PRESENTER) Alissa J. Cooper, MD Matthew Bott, MD Catherine Oberg, MD Daniel Gomez, MD, MBA
11:00 AM	Break

SESSION II

MODERATORS	Leontine J.R. van Elden, MD, PhD Gopi I. Patel, MD
11:15 AM	Navigating Immune Checkpoint Inhibitor-Related Pneumonitis and Future Directions Jarushka Naidoo, MD (VIRTUAL PRESENTER)
12:00 PM	Lunch Break
1:00 PM	Antibody-Drug Conjugate (ADC) and Targeted Therapy–Induced Lung Toxicity: Clinical Insights and Rechallenge Strategies Ajay Sheshradri, MD, MSCI
1:25 PM	Early Non-Infectious Pulmonary Complications Following Hematopoietic Stem Cell Transplantation Andrew Harris, MD
1:45 PM	CAR T-Cell and Other Cellular Therapy–Associated Pneumonitis Elena Mead, MD
2:05 PM	Q&A and Discussion
2:10 PM	Complex Case Presentations and Panel Discussion Timothy Miller, MD (CASE PRESENTER) Jarushka Naidoo, MD (VIRTUAL) Ajay Sheshradri, MD, MSCI Andrew Harris, MD Elena Mead, MD
2:40 PM	Break

SESSION III

MODERATORS	Elizabeth Yogiaveetil, MD Christina M. Hess, AGACNP-BC
2:55 PM	Pulmonary Rehab: A Pulmonologist's Perspective Elizabeth Yogiaveetil, MD
3:20 PM	Symptom Management Craig D. Blinderman, MD, MA, FAAHPM
3:40 PM	Likes, Lies, and Lungs: Health Education in the Age of Social Media Timothy Tuitan, MD
4:00 PM	Integrating Tobacco Treatment into Cancer Care and Lung Cancer Screening Jamie S. Ostroff, PhD
4:25 PM	Q&A and Discussion

4:30 PM

Complex Case Presentations and Panel Discussion

Christina M. Hess, AGACNP-BC (CASE PRESENTER)

Elizabeth Yogiaveetil, MD

Craig D. Blinderman, MD, MA, FAAHPM

Timothy Tuitan, MD

Jamie S. Ostroff, PhD

5:00 PM

Closing Remarks and Adjournment

Leontine J.R. van Elden, MD, PhD

Accreditation

Memorial Sloan Kettering Cancer Center is accredited by the Accreditation Council for Continuing Medical Education to provide continuing medical education for physicians.

AMA Credit Designation Statement

Memorial Sloan Kettering Cancer Center designates this live activity for a maximum of **7.50 AMA PRA Category 1 Credits™**. Physicians should claim only the credit commensurate with the extent of their participation in the activity.

MOC/CC Recognition Statements

Successful completion of this CME activity, which includes participation in the evaluation component, enables the participant to earn up to:

- 7.50 Medical Knowledge MOC points in the American Board of Internal Medicine's (**ABIM**) Maintenance of Certification (MOC) program; and
- 7.50 credit toward the CME and Self-Assessment of the American Board of Thoracic Surgery's (**ABTS**) Maintenance of Certification program.

It is the CME activity provider's responsibility to submit participant completion information to ACCME for the purpose of granting ABIM or ABTS MOC/CC credit.

An application for **ANCC Nursing Contact Hours** is currently under review.



Registration

This symposium offers the option to **attend either in person or virtually**. Attendance type should be selected during registration.

Register online: msk.org/Pulmo-Onc

Early Rates *(available through August 8)*

- Physicians (MDs, DOs, PhDs): \$250
- Advanced Practice Provider: \$200
- Nursing and Other Healthcare Professionals*: \$100
- Residents, Fellows, and Students*: \$50
- Industry Professionals**: not available (general rates apply)
- MSK Employees: Complimentary

General Rates *(after August 8)*

- Physicians (MDs, DOs, PhDs): \$300
- Advanced Practice Provider: \$250
- Nursing and Other Healthcare Professionals: \$150
- Residents, Fellows, and Students*: \$100
- Industry Professionals**: \$525
- MSK Employees: Complimentary

**Registration fees of \$100 or less are non-refundable.*

***An “industry professional” is defined as any individual—regardless of profession (e.g., MD, PhD, APP, RN)—who is employed by an ineligible company.*

Registration Discounts: Discounted registration is available for specific groups. If eligible, you will receive further instructions and a promotion code to use during registration.

Meals and Accommodations: Continental breakfast, lunch, and refreshment breaks will be provided to in-person participants. If you have dietary restrictions or require special accommodations to attend in person, please contact us at cme@mskcc.org at least one week prior to the symposium.

Cancellation Policy: For details regarding our cancellation policy, please visit the symposium website.



Memorial Sloan Kettering
Cancer Center