

2026 Advancing Oncology Practice

Updates in Diagnosis,
Management, and Outcomes

March 25—26, 2026 • Live Virtual Symposium



Memorial Sloan Kettering
Cancer Center

Hartford
HealthCare



Baptist Health
Miami Cancer Institute

Overview

This two-day live virtual symposium is designed to provide a comprehensive update on advances in cancer treatment and management across the oncology care continuum.

The program will highlight current evidence-based clinical practice and research initiatives; address health inequities and wellness in the oncology population; explore the evolving role of technology and social media in healthcare; and examine emerging trends in independent oncology practice and professional development.

The overarching goal of this activity is to equip healthcare professionals with practical tools to deliver state-of-the-art, collaborative, team-based cancer care — ultimately improving patient outcomes and enhancing quality of life for individuals living with cancer.

Target Audience

This activity is intended for physicians, nurse practitioners, physician assistants, certified registered nurse anesthetists, and nurses involved in the care of patients with cancer.

Online Syllabus

Following the conclusion of the symposium, participants will receive access to an online syllabus that includes video recordings of faculty presentations. Please note that PDFs of speakers' presentations will not be provided.

PRESENTED IN COLLABORATION WITH:

Memorial Sloan Kettering Cancer Center

Hartford HealthCare Cancer Institute

Miami Cancer Institute at Baptist Health South Florida

Educational Objectives

Upon completion of this activity, participants will be able to:

- Identify innovative medical and surgical cancer treatment strategies for adult and pediatric cancers.
- Discuss ethical considerations seen throughout the cancer care continuum.
- Describe the multi-disciplinary approach and specialized teams necessary to optimize care in the oncology population.
- Formulate an optimal plan for the management of patients experiencing an oncologic emergency.
- Recognize inequities in the screening, diagnosis, and management of cancer.
- Identify cancer risk, assessment, prevention, and treatment in patients with a hereditary predisposition.
- Explain initiatives that promote advanced practice provider practice and professional development.
- Describe the current and future implications of artificial intelligence, social media, and advances in technology in the cancer care landscape.

Registration

This program will be held virtually via Zoom. Detailed access instructions will be provided prior to the start of the program.

- Physicians (MDs, PhDs, DOs): \$349
- Advanced Practice Providers: \$199
- Nurses and Other Healthcare Providers: \$125
- Residents and Fellows: \$50
- Industry Professionals: \$625
- MSK Employees: Complimentary

Discounted registration is available for specific groups. If eligible, you will receive further instructions and a promotion code to use during registration.

For full program details and to register, visit:
msk.org/AdvancingOncologyPractice

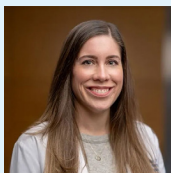
Faculty

Symposium Directors



David Pfister, MD

Chair of Oncology, MediSys Jamaica Hospital MSK Affiliation
Attending Physician, Head and Neck Oncology Service
Department of Medicine
Memorial Sloan Kettering Cancer Center



Lindsey Przybilla, PA-C

Manager, Advanced Practice Provider Professional Development
Memorial Sloan Kettering Cancer Center



Joanna Yohannes-Tomicich, DNP, NP-C, AGACNP-BC, FCCM

Advanced Practice Provider Specialist
Koch PACU and Department of Professional Development
Memorial Sloan Kettering Cancer Center

Advanced Practice Provider Sponsor

Nicole Zakak, MS, RN, CPNP, CPHON

Director, Advanced Practice Provider Professional Development and Quality
Memorial Sloan Kettering Cancer Center

Planning Committee

Stephanie Alvarado, PA-C

Memorial Sloan Kettering Cancer Center

Cynthia Amador, APRN, FNP-BC, AGACNP-BC

Miami Cancer Institute at Baptist Health South Florida

Catherine Cannan, AGNP-C, AOCNP

Hartford HealthCare Cancer Institute

Linda D'Andrea, MSN, RN, PPCNP-BC, CPHON

Memorial Sloan Kettering Cancer Center

Farrell Dearie, PA-C

Memorial Sloan Kettering Cancer Center

Emma DiGiacomo, BS, MS, PA-C

Memorial Sloan Kettering Cancer Center

Kristi Dubey, MSN, APRN, AGACNP-BC, AOCNP

Hartford HealthCare Cancer Institute

Mary Kate Eanniello, DNP, RN, OCN

Memorial Sloan Kettering Cancer Center

Haddie Flores, APRN-BC, BMTCN

Miami Cancer Institute at Baptist Health South Florida

Courtney Hennelly, MS, RN, APN-BC

Memorial Sloan Kettering Cancer Center

Gerlem Manso Morin, APRN, FNP-BC, AOCNP

Miami Cancer Institute at Baptist Health South Florida

Stacey-Ann Rhodd, APRN, FNP-BC, AOCNP

Miami Cancer Institute at Baptist Health South Florida

Lourdes Rivera, PhD, PA-C, MCMSc

Miami Cancer Institute at Baptist Health South Florida

Miri Sinclair, DNP, APRN, FNP-BC, AOCNP

Miami Cancer Institute at Baptist Health South Florida

Jaclyn Stout, NP

Hartford HealthCare Cancer Institute

Paige Whittaker, MPAS, PA-C

Hartford HealthCare Cancer Institute

Kerry Williams, MSN, RN, ANP-BC, AOCNP

Memorial Sloan Kettering Cancer Center

Symposium Speakers

Rafael Alonso, DNP, APRN, AGACNP-BC

Miami Cancer Institute at Baptist Health South Florida

Al Asante-Facey, PA-C, MBA

Memorial Sloan Kettering Cancer Center

Desiree Bascombe, MSN, FNP-BC

Memorial Sloan Kettering Cancer Center

Maria Carlo, MD

Memorial Sloan Kettering Cancer Center

Michelle Colletti, PA-C, HEC-C

Memorial Sloan Kettering Cancer Center

Sabrina Cordero, APRN, FNP-BC

Miami Cancer Institute at Baptist Health South Florida

Tara Corso, PA-C

Memorial Sloan Kettering Cancer Center

Camila Davalos, PA-C, MPSA

Miami Cancer Institute at Baptist Health South Florida

Isabelle Delau, PA-C

Memorial Sloan Kettering Cancer Center

Jessica Divanno, MSN, AGPCNP-BC

Memorial Sloan Kettering Cancer Center

Sarah Dost, MD

Hartford HealthCare Cancer Institute

Theresa Elko, PA-C

GlaxoSmithKline

Elise Fiala, MS, CGC

Memorial Sloan Kettering Cancer Center

Erica Fischer-Carlidge, DNP, RN, AOCNS, EBP-C

Oncology Nursing Society

Cara Fleming, MSN, AGPCNP-BC, AOCNP

Memorial Sloan Kettering Cancer Center

Janessa Fuentes, APRN, ACNP-BC, CNRN

Miami Cancer Institute at Baptist Health South Florida

Camilla Guerrero, MSHS, PA-C

Memorial Sloan Kettering Cancer Center

Alanna Jamner, MPA, MSc

Memorial Sloan Kettering Cancer Center

Paulette Kelly, MSN, APRN-BC, FNP, CPN, CPON, OCN

Memorial Sloan Kettering Cancer Center

Deirdre Kelly, MSN, AGACNP-BC

Memorial Sloan Kettering Cancer Center

Heather Landau, MD

Memorial Sloan Kettering Cancer Center

Xin (Kenny) Lin, MSN, AGNP-BC, OCN

Memorial Sloan Kettering Cancer Center

Maria Mazurchuk, PA-C

Memorial Sloan Kettering Cancer Center

Jennifer Mueller, MD

Memorial Sloan Kettering Cancer Center

Patrick Nugent, APRN, MSN, FNP-BC, OCN

Miami Cancer Institute at Baptist Health South Florida

Frank Nyanin, PharmD, BCPS, BCOP

Miami Cancer Institute at Baptist Health South Florida

Kristen O'Hagan, MSN, RN, ANP-BC, AOCNP

Memorial Sloan Kettering Cancer Center

Eileen O'Reilly, MD, FASCO

Memorial Sloan Kettering Cancer Center

Shila Pandey, DNP, AGPCNP-BC, ACHPN

Memorial Sloan Kettering Cancer Center

Leonor Perez Aquino, DNP, APRN-C, AOCNP, BMTCN

Miami Cancer Institute at Baptist Health South Florida

Rita Quintana, MSHS, PA-C

Miami Cancer Institute at Baptist Health South Florida

Maureen Regan, MBA, PA-C, FACHE, DFAAPA

New York State Society of Physician Assistants

Lillian Rodich, PA-C

Memorial Sloan Kettering Cancer Center

Amy Scharf, MBe, HEC-C

Memorial Sloan Kettering Cancer Center

Carol Simpson, MSN, RN, NEA-BC

Memorial Sloan Kettering Cancer Center

Darron Smith, PhD, PA-C, DFAAPA

Barry Stein, MD, MBA, FSIR, FACR, RPVI

Hartford HealthCare Cancer Institute

Alyssa Strohbusch, PharmD, MS, CPh, BCOP

Miami Cancer Institute at Baptist Health South Florida

Timothy Tiutan, MD

Memorial Sloan Kettering Cancer Center

Theresa Towers, MSN, RN, FNP-BC


Memorial Sloan Kettering Cancer Center

For complete faculty details, visit:

msk.org/AdvancingOncologyPractice

Schedule

Wednesday • March 25, 2026

7:55 a.m.	Attendee Zoom Sign-In and Check-In
8:00 a.m.	Introduction and Welcome Nicole Zakak, MS, RN, CPNP, CPHON
8:05 a.m.	 Opening Lecture Healthcare Transformation Through Academic and Community-Hospitality Partnerships David Pfister, MD

SESSION I

First, Do No Harm: Ethical Considerations and Supportive Care in the Oncology Population

Moderator	Farrell Dearie, PA-C
8:20 a.m.	Oncology’s Moral Crossroads: Navigating Ethical Conundrums in Cancer Care Michelle Colletti, PA-C, HEC-C
8:40 a.m.	Best Practices in Prognosis and Goals-of-Care Conversations Sarah Dost, MD
9:00 a.m.	Ethical Dilemmas at the End of Life Amy Scharf, MBe, HEC-C
9:20 a.m.	Q&A and Panel Discussion

SESSION II

The Art and Science of Surgical Oncology: Blending Skill and Innovation

Moderator	Cynthia Amador, APRN, FNP-BC, AGACNP-BC
9:35 a.m.	Robotic Surgery Training Redefined: APP-Led Wet Labs in Surgical Oncology Fellowships Camilla Guerrero, MSHS, PA-C
9:50 a.m.	Innovations in Breast Reconstruction for Managing the Ptotic Breast Rita Quintana, MSHS, PA-C
10:05 a.m.	Ready for the Table: The APPs Impact on Preoperative Optimization and Surgical Readiness Theresa Towers, MSN, RN, FNP-BC
10:20 a.m.	Endometrial Cancer and a Surgical Approach Camila Davalos, PA-C, MPSA
10:35 a.m.	Q&A and Panel Discussion
10:50 a.m.	Break

SESSION III

What's your Target?: Immunotherapy in the Cancer Landscape

Moderator Haddie Flores, APRN-BC, BMTCN

11:05 a.m. **Safety and Efficacy Data from Nexcart-2, the First U.S. Trial of CAR-T in R/R Light Chain (AL) Amyloidosis, Nxc-201**
Heather Landau, MD

11:25 a.m. **Recent Advancements in the Management of Gastro-Intestinal Malignancies**
Frank Nyanin, PharmD, BCPS, BCOP

11:45 a.m. **Immunotherapy Toxicities (GI/Liver) — Predict, Prevent, Protect**
Tara Corso, PA-C

12:05 p.m. **Q&A and Panel Discussion**

12:15 p.m. Lunch Break

SESSION IV

ASCO/ASH Updates

Moderator Emma DiGiacomo, BS, MS, PA-C

12:45 p.m.  **Keynote Lecture**
Racial Disparities in the Use of Psychedelics
Darron Smith, PhD, PA-C, DFAAPA

1:20 p.m. **The Emerging Role of Immunotherapy in dMMR Colorectal Cancer**
Desiree Bascombe, MSN, FNP-BC

1:35 p.m. **Shared Updates on Immunotherapy-Based Regimens for Advanced Renal Cell Carcinoma (RCC)**
Maria Carlo, MD

1:50 p.m. **RAS Therapies in Pancreas Cancer: The New Age**
Eileen O'Reilly, MD, FASCO

2:05 p.m. **Q&A and Panel Discussion**

SESSION V

The Evolving Landscape of #Technology & AI in Healthcare

Moderator Mary Kate Eanniello, DNP, RN, OCN

2:15 p.m. **Augmenting the Clinician: Artificial Intelligence in Oncology Decision Making**
Barry Stein, MD, MBA, FSIR, FACR, RPVI

2:35 p.m. **Likes, Lies & Longevity: Healthcare Education in the Era of Misinformation**
Timothy Tiutan, MD

2:55 p.m. **The Smart OR: Artificial Intelligence in Surgical Oncology**
Maria Mazurchuk, PA-C
Isabelle Delau, PA-C

3:15 p.m.	Oncology on the Air: Using Podcasts to Educate, Engage, and Empower Carol Simpson, MSN, RN, NEA-BC
3:35 p.m.	Q&A and Panel Discussion
3:50 p.m.	Adjourn

SESSION VI

Innovations in Hematology, Transplant, and Cellular Therapies

Moderator	Gerlem Manso Morin, APRN, FNP-BC, AOCNP
4:00 p.m.	Atypical HUS Syndrome in the Postpartum Setting: Diagnostic Challenges and Multidisciplinary Management Rafael Alonso, DNP, APRN, AGACNP-BC
4:15 p.m.	Transplant-Associated Thrombotic Microangiopathy (TA-TMA) Patrick Nugent, APRN, MSN, FNP-BC, OCN
4:30 p.m.	Optimizing Management of Chemotherapy-Induced Thrombocytopenia in Solid Tumors: The Role of TPO-Receptor Agonists Alyssa Strohbusch, PharmD, MS, CPh, BCOP
4:45 p.m.	Q&A and Panel Discussion
5:00 p.m.	Closing Remarks Lindsey Przybilla, PA-C
5:05 p.m.	Adjourn

Thursday • March 26, 2026

7:55 a.m.	Attendee Zoom Sign-In and Check-In
8:00 a.m.	Opening Remarks Joanna Yohannes-Tomicich, DNP, NP-C, AGACNP-BC, FCCM

SESSION VII

Call 911! Trends in Symptom Care Clinics (SCC)

Moderator	Stephanie Alvarado, PA-C
8:05 a.m.	Oncology Symptom Care Without Borders: Expanding Access Beyond the Main Campus Janessa Fuentes, APRN, ACNP-BC, CNRN
8:25 a.m.	Triage and Transfer in the SCC Kristen O'Hagan, MSN, RN, ANP-BC, AOCNP Cara Fleming, MSN, AGPCNP-BC, AOCNP
8:45 a.m.	Emergencology: Managing the "Can't Miss" Diagnoses in the Outpatient Oncology Setting Deirdre Kelly, MSN, AGACNP-BC
9:05 a.m.	Q&A and Panel Discussion

SESSION VIII

Paving the Way for APP Practice: Professional Development Initiatives

Moderator Miri Sinclair, DNP, APRN, FNP-BC, AOCNP

9:20 a.m. **From Orientation to Autonomy:
The Journey to Independent Practice**
Sabrina Cordero , APRN, FNP-BC
Shila Pandey, DNP, AGPCNP-BC, ACHPN
Catherine Cannan, AGNP-C, AOCNP

9:50 a.m. **Voices that Change Policy: APP Political Advocacy in Action —
The Future of APP Practice in a Changing Legislative Landscape**
Erica Fischer-Carlidge, DNP, RN, AOCNS, EBP-C
Maureen Regan, MBA, PA-C, FACHE, DFAAPA

10:20 a.m. **Q&A and Panel Discussion**

10:35 a.m. Break

SESSION IX

“But I’m too Young”: Cancer Care and the AYA Population

Moderator Courtney Hennelly, MS, RN, APN-BC

10:50 a.m. **Breast Cancer in the AYA Patient: Biology, Fertility, and Beyond**
Alanna Jamner, MPA, MSc

11:05 a.m. **Bridging the Gap: Expanding Access to Comprehensive
AYA Oncology Care**
Paulette Kelly, MSN, APRN-BC, FNP, CPN, CPON, OCN

11:20 a.m. **Inherited Risk, Informed Care: Genetics in AYA Oncology**
Elise Fiala, MS, CGC

11:35 a.m. **The Rarest Journeys: A Patient’s Perspective on the Diagnosis and
Treatment of Rare Tumors in AYA Oncology**
Patient Speaker (To Be Announced)

11:50 a.m. **Q&A and Panel Discussion**

SESSION X

Advancing Healthcare: Independent Advanced Practice Provider Care

Moderator Jaclyn Stout, NP

12:05 p.m. **Primary Palliative Care in the Community Setting**
Kristi Dubey, MSN, APRN, AGACNP-BC, AOCNP

12:20 p.m. **From Bedside to Bench:
Expanding the APP Role in Clinical Research and Innovation**
Theresa Elko, PA-C

12:35 p.m. **One Room, Many Voices:
Leveraging Shared Medical Visits in Oncology Care**
Kenny Lin, MSN, AGNP-BC, OCN
Lillian Rodich, PA-C

12:50 p.m.	Life After Cancer: Advanced Strategies for Long-Term Survivor Care Jessica Divanno, MSN, AGPCNP-BC
1:05 p.m.	Q&A and Panel Discussion
1:20 p.m.	Break
SESSION XI	
Specialized Solutions: Advocating for Special Populations	
Moderator	Stacey-Ann Rhodd, APRN, FNP-BC, AOCNP
1:30 p.m.	Caring for Jehovah's Witness Patients with Malignant Hematologic Diseases Leonor Perez Aquino, DNP, APRN-C, AOCNP, BMTCN
1:45 p.m.	Gender-Affirming Oncology: Best Practices for Transgender Patient Care Al Asante-Facey, PA-C, MBA
2:00 p.m.	From Preservation to Parenthood: Uterine Transposition in Oncofertility Care Jennifer Mueller, MD
2:15 p.m.	Q&A and Panel Discussion
2:25 p.m.	Closing Remarks Lindsey Przybilla, PA-C
2:30 p.m.	Adjourn

Accreditation

Memorial Sloan Kettering Cancer Center is accredited by the Accreditation Council for Continuing Medical Education to provide continuing medical education for physicians.

AMA Credit Designation Statement

Memorial Sloan Kettering Cancer Center designates this live activity for a maximum of **13.50 AMA PRA Category 1 Credits™**. Physicians should claim only the credit commensurate with the extent of their participation in the activity.

MOC/CC Recognition Statements

Successful completion of this CME activity, which includes participation in the evaluation component, enables the participant to earn up to:

- 13.50 Medical Knowledge MOC points in the American Board of Internal Medicine's (**ABIM**) Maintenance of Certification (MOC) program; and
- 13.50 CME and Self-Assessment requirements of the American Board of Surgery's (**ABS**) Continuous Certification (CC) program.

It is the CME activity provider's responsibility to submit participant completion information to ACCME for the purpose of recognizing participation. MOC/CC points earned will be reported to the board within 45 days of completing the post-course evaluation.

ANCC CNE Statement

Application currently under review.



Registration

This program will be held virtually via Zoom. Detailed access instructions will be provided prior to the start of the program.

Registration Fees

- Physicians (MDs, PhDs, DOs): \$349
- Advanced Practice Providers: \$199
- Nurses and Other Healthcare Professionals: \$125
- Residents and Fellows: \$50
- Industry Professionals*: \$625
- MSK Employees: Complimentary

Discounted registration is available for select groups. Additional details — including the registration link — can be found on our website.

*An “industry professional” is defined as any individual, irrespective of their provider type (such as MDs, PhDs, APPs, RNs, etc.) that is employed by an ineligible company. Please review our Registration Policy for Industry Professionals for more information.

For full program details and to register, visit:
msk.org/AdvancingOncologyPractice



Memorial Sloan Kettering
Cancer Center

Continuing Medical Education

msk.org/cme

Instagram ► [MSKcontinuingmedicaleducation](#)

LinkedIn ► [MSK-CME](#)

Facebook ► [MSKCME](#)

X ► [MSKCME](#)

Copyright 2026 © Memorial Sloan Kettering Cancer Center