

# 10<sup>th</sup> Annual MSK Symposium on Lymphoma

Celebrating ten years of breakthroughs in lymphoma research, treatment, and clinical practice, driving meaningful improvements in patient care.

**April 10—11, 2026**

Attend Live in **New York City** or **Virtually**

ABIM  
CME MOC  
ACCREDITED



Memorial Sloan Kettering  
Cancer Center

# Overview

Join us for the 10th anniversary edition of the MSK Symposium on Lymphoma, marking a decade of advances in lymphoma diagnosis, management, and therapy.

---

**This one-and-a-half-day symposium — offered both live at Memorial Sloan Kettering Cancer Center (MSK) and virtually — will explore the rapidly evolving landscape of lymphoma research and clinical practice, highlighting advances in disease biology, diagnostic approaches, and therapeutic strategies that are transforming patient outcomes.**

The program offers a comprehensive review of the clinical management of both common and emerging lymphoma subtypes. Through expert-led lectures, interactive panel discussions, and practical clinical guidance, faculty will share the latest evidence and insights to support informed, individualized decision-making in an era of accelerating innovation.

Participants will gain insight into the scientific advances shaping lymphoma biology and pathology, and how these discoveries are being translated into clinical practice. This program brings together distinguished experts from MSK and institutions across the United States and around the world to advance education, collaboration, and patient-centered care — helping to shape the future of lymphoma care.

## **Target Audience**

This symposium is designed for internists, hematologists, medical and radiation oncologists, hematopathologists, scientists, and medical trainees who are involved in the diagnosis, treatment, and biomedical research of lymphoma.

# Program Highlights

## Keynote Lectures

Presented by internationally recognized leaders in lymphoma biology, translational research, and clinical care.

## Interactive Panel Discussions

Case-based conversations addressing evolving treatment paradigms and real-world clinical challenges.

## Allied Health Professionals Session

A dedicated session for the interprofessional care team, highlighting their essential and expanding role in lymphoma management. *Space is limited, and early registration is strongly encouraged.*

## Networking Opportunities

Connect with colleagues and faculty throughout the program, including a 10th anniversary reception on Friday evening and a farewell luncheon on Saturday afternoon.

## Credits Available

This activity has been approved for *AMA PRA Category 1 Credit(s)*<sup>™</sup>, American Board of Internal Medicine (ABIM) Maintenance of Certification, and American Board of Pathology (ABPath) Continuing Certification. An application has been submitted for ANCC Nursing contact hours.

## Syllabus

After the symposium concludes, participants will have access to an online syllabus that includes recorded faculty presentations and PDF copies of presentation slides.

**Early discounted rates available through February 13.**

**Learn more and register:**

**[msk.org/LymphomaSymposium](https://msk.org/LymphomaSymposium) >>**

# Faculty

## MSK Symposium Director



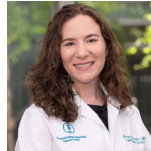
**Gilles Salles, MD, PhD**  
Chief, Lymphoma Service

---

## MSK Planning Committee



**Ahmet Dogan, MD, PhD**  
Chief, Hematopathology Service



**Alison Moskowitz, MD**  
Associate Attending,  
Lymphoma Service



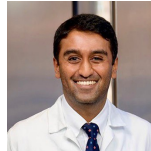
**Lauren Drosick, PA-C**  
Advanced Practice Provider,  
Lymphoma Service



**Ariela Noy, MD**  
Member, Lymphoma Service



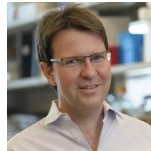
**Kojo Elenitoba-  
Johnson, MD**  
Chair, Department of Pathology  
and Laboratory Medicine



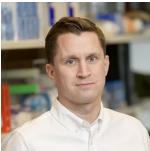
**Kishan Patel, MD**  
Hematology/Oncology Fellow



**Steven Horwitz, MD**  
Attending, Lymphoma Service



**Hans-Guido Wendel, MD**  
Member/Professor, Cancer  
Biology and Genetics Program



**Andrew Intlekofer,  
MD, PhD**  
Assistant Member, Human  
Oncology & Pathogenesis  
Program

---

Memorial Sloan Kettering Cancer Center adheres to the ACCME's Standards for Integrity and Independence in Accredited Continuing Education. Any individuals in a position to control the content of a CE activity, including faculty, planners, reviewers, or others are required to disclose all financial relationships with ineligible companies (commercial interests). All relevant financial relationships are mitigated prior to the commencement of the activity.

# Faculty

## Guest Faculty

### **Emmanuel Bachy, MD, PhD**

Professor, Clinical Hematology  
Lyon Sud Hospital  
Lyon, France

### **Paul Bröckelmann, MD**

Attending Physician  
Department of Internal Medicine  
University Hospital of Cologne  
Cologne, Germany

### **Lucy Cook, PhD**

Consultant Haematologist  
Imperial College Healthcare NHS  
London, United Kingdom

### **Jennifer Crombie, MD**

Senior Physician  
Assistant Professor of Medicine  
Dana-Farber Cancer Institute  
Boston, Massachusetts, United States

### **Tarek Christoffer El-Galaly, MD, DMSc**

Clinical Professor, Hematology, Molecular  
Medicine, and Clinical Epidemiology  
Aarhus University  
Aarhus, Denmark

### **Daniel Hodson, PhD**

Honorary Consultant Haematologist  
CRUK Senior Cancer Research Fellow  
Haematology and Cambridge Stem Cell Institute  
University of Cambridge  
Cambridge, United Kingdom

### **Martin Hutchings, MD, PhD**

Professor and Senior Consultant  
Haematology and Phase 1 Unit  
Rigshospitalet and University of Copenhagen  
Copenhagen, Denmark

### **Brad Kahl, MD**

Professor of Medicine  
Washington University  
St. Louis, Missouri, United States

### **Rebecca King, MD**

Pathologist, Department of Laboratory  
Medicine and Pathology  
Mayo Clinic  
Rochester, Minnesota, United States

### **Matthew Lunning, DO**

Professor of Medicine  
Interim Chief, Division of Hematology  
James O. Armitage, MD, Chair in  
Hematological Malignancies  
University of Nebraska Medical Center  
Omaha, Nebraska, United States

### **Marcela Maus, MD, PhD**

Director, Cellular Immunotherapy Program  
Paula O'Keeffe Endowed Chair  
Massachusetts General Hospital Cancer Center  
Professor of Medicine, Harvard Medical School  
Massachusetts General Hospital  
Boston, Massachusetts, United States

### **Carolina Rosadas de Oliveira, PhD**

Research Fellow  
Department of Infectious Disease  
Imperial College  
London, United Kingdom

### **Aileen Rowan, PhD**

Assistant Professor in Virology  
Department of Infectious Disease  
Imperial College  
London, United Kingdom

---

## MSK Faculty

### **Ashley Ames, MSN, FNP-BC, OCN**

Nurse Practitioner

### **Tara Aumenta, MSN, FNP-BC**

Advanced Practice Provider Manager

### **Annalisa Benz, BSN, RN, OCN**

Nurse Practitioner

### **Alexander Boardman, MD**

Assistant Attending, Lymphoma Service and  
Cellular Therapy Service

### **Jayanta Chaudhuri, PhD**

Professor and Member, Sloan Kettering Institute

### **Theresa Davey, PA-C**

Advanced Practice Provider

# Faculty

**Diane Engler, RN**

Clinical Nurse II

**Lorenzo Falchi, MD**

Assistant Attending, Lymphoma Service and Cellular Therapy Service

**Paola Ghione, MD, MSEpi**

Assistant Attending, Lymphoma Service

**Nigel Gwini, MD**

Hematology/Oncology Fellow

**Sean Heulton, MD, PhD**

Hematology/Oncology Fellow

**Brandon Imber, MD, MA**

Assistant Attending,  
External Beam Radiotherapy Service

**Varun Iyengar, MD**

Hematology/Oncology Fellow

**Anita Kumar, MD**

Associate Attending, Lymphoma Service

**Carissa Laudati, MSN, FNP-BC**

Nurse Practitioner

**Diane Lee, MSN, AGPCNP-BC**

Nurse Practitioner

**Jennifer Lue, MD**

Assistant Attending; Clinical Director,  
Lymphoma Service

**Efrat Luttwak, MD, MPH**

Assistant Attending, Lymphoma Service

**Neena Mahajan, MSN, AGACNP-BC**

Clinical Trials Nurse Practitioner

**Anastasia Martinova, BSN, RN**

Clinical Trials Nurse II

**Lia Palomba, MD**

Attending Member, Lymphoma Service and Cellular Therapy Service

**Jamie Plevy, NP-BC, AOCNP**

Clinical Trials Nurse Practitioner

**Mark Roschewski, MD**

Attending, Lymphoma Service

**Craig Sauter, MD**

Medical Director, Regional Network  
Attending, Bone Marrow Transplant Service and Cellular Therapy Service

**Quinlan Sievers, MD, PhD**

Physician-Scientist, Lymphoma Service

**Raphael Steiner, MD**

Associate Attending Physician, Lymphoma Service

**Robert Stuver, MD**

Assistant Attending Physician, Lymphoma Service

**Pallawi Torka, MD**

Assistant Attending, Lymphoma Service

**Kathryn Walsh, ANP-BC, AGACNP**

Nurse Practitioner

**Jasmine M. Zain, MD**

Attending, Lymphoma Service and Bone Marrow Transplant Services

**Andrew Zelenetz, MD, PhD**

Medical Director, Quality Informatics  
Attending, Lymphoma Service

# Schedule

All times listed on the schedule are presented in Eastern Daylight Time (EDT).

## FRIDAY, APRIL 10, 2026

7:15 a.m.	Check-In and Breakfast (In-Person Participants)
7:55 a.m.	Zoom Sign-On and Virtual Check-In
8:00 a.m.	<b>Welcome and Introduction</b> Gilles Salles, MD, PhD

## Plenary Lecture

CHAIR	Gilles Salles, MD, PhD
8:05 a.m.	 <b>Lessons Learned from the Development of T-Cell-Engaging Antibodies in B-Cell Lymphoma</b> Martin Hutchings, MD, PhD

## Follicular Lymphoma

CHAIRS	Efrat Luttwak, MD, MPH Gilles Salles, MD, PhD
9:00 a.m.	<b>Current Challenges in the Management of Patients with Follicular Lymphoma</b> Matthew Lunning, DO
9:30 a.m.	<b>Small Doses, Big Impact: The Role of Very Low-Dose Radiotherapy in Potentially Curable Indolent Lymphomas</b> Brandon Imber, MD, MA
9:45 a.m.	<b>Debate</b> <b>Is a Follicular Lymphoma Cure in Reach? T-Cell Engagers versus CAR T-Cell Therapy</b> <i>FOR BISPECIFIC ANTIBODIES:</i> Lorenzo Falchi, MD <i>FOR CAR T-CELL:</i> Alexander Boardman, MD
10:05 a.m.	<b>Panel Discussion and Q&amp;A</b>
10:20 a.m.	<i>Break</i>

## Mantle Cell Lymphoma

CHAIRS	Andrew Zelenetz, MD, PhD Paola Ghione, MD, MSEpi
10:40 a.m.	<b>Advances in Therapeutic Strategies for Mantle Cell Lymphoma</b> Brad Kahl, MD
11:10 a.m.	<b>Spotlight on Recent Drugs and MSK Clinical Trials</b> Anita Kumar, MD
11:25 a.m.	<b>Panel Discussion and Q&amp;A</b>

## Special Lecture

CHAIRS

Kishan Patel, MD  
Gilles Salles, MD, PhD

11:40 a.m.



**How to Interpret “Real-World” Data**  
Tarec Christoffer El-Galaly, MD, DMSc

12:30 p.m.

*Lunch Break*

## Special Lecture

CHAIRS

Sean Heaton, MD, PhD  
Gilles Salles, MD, PhD

1:45 p.m.



**B-Cell Development and Lineage Stability**  
Jayanta Chaudhuri, PhD

## Hodgkin Lymphoma

CHAIRS

Alison Moskowitz, MD  
Varun Iyengar, MD

2:25 p.m.

**Optimizing First-Line Therapy: Balancing Efficacy versus Toxicity**  
Paul Bröckelmann, MD

2:55 p.m.

**Spotlight on Nodular Lymphocyte Predominant B-Cell/  
Hodgkin Lymphoma**  
Raphael Steiner, MD

3:10 p.m.

**Spotlight on Recent Drugs and MSK Clinical Trials**  
Alison Moskowitz, MD  
Robert Stuver, MD

3:25 p.m.

**Panel Discussion and Q&A**

3:45 p.m.

*Break*

## T-Cell Lymphoma

[Concurrent Session Available: Allied Health Professionals Breakout Session — see next page for details.](#)

CHAIRS

Steven Horwitz, MD  
Jasmine M. Zain, MD

4:00 p.m.

**HTLV-1–Associated Lymphoma/Leukemia: Epidemiology  
and Natural History**  
Carolina Rosadas de Oliveira, PhD

4:20 p.m.

**HTLV-1–Associated Lymphoma/Leukemia: Biology**  
Aileen Rowan, PhD

4:40 p.m.

**HTLV-1–Associated Lymphoma/Leukemia: Therapies**  
Lucy Cook, PhD

5:00 p.m.

**HTLV-1 Clinic Overview**

Theresa Davey, PA-C

5:10 p.m.

**Innovations in T-Cell Lymphoma: A Winding Road**

Steven Horwitz, MD

5:30 p.m.

**Panel Discussion and Q&A**

5:50 p.m.

**Closing Remarks**

Gilles Salles, MD, PhD

## **10<sup>th</sup> Anniversary Reception**

6:00–7:00 p.m. • Zuckerman Lobby

*Join us for an evening of conversation, connection, and celebration as we mark the 10<sup>th</sup> anniversary of the symposium. Hors d'oeuvres and refreshments will be served.*

# Breakout Session for Allied Health Professionals\*

Friday, April 10, 2026, 4:00—5:55 pm.

Location: Room 136

---

4:00 p.m.	<b>Welcome and Introduction</b> Tara Aumenta, MSN, FNP-BC Lauren Drosick, PA-C
4:05 p.m.	<b>Introduction to Cutaneous T-cell Lymphoma</b> Theresa Davey, PA-C Diane Engler, RN
4:25 p.m.	<b>A “Path” Toward Diagnosis: An Overview of Pathology in Lymphoma</b> Ashley Ames, MSN, FNP-BC, OCN Jamie Plevy, NP-BC, AOCNP Kathryn Walsh, ANP-BC, AGACNP
4:45 p.m.	<b>Diffuse Large B-Cell Lymphoma: Diagnosis and Updates on Management</b> Carissa Laudati, MSN, FNP-BC
5:05 p.m.	<b>Research Spotlight: Bispecific B Cell Protocols at MSK and CRS management</b> Anastasia Martinova, BSN, RN Neena Mahajan, MSN, AGACNP-BC
5:25 p.m.	<b>Integrative Medicine: Management of Treatment Related Side Effects</b> Diane Lee, MSN, AGPCNP-BC
5:40 p.m.	<b>Panel Discussion and Q&amp;A</b>
5:50 p.m.	<b>Closing Remarks and Adjournment</b> Tara Aumenta MSN, FNP-BC Lauren Drosick PA-C
6:00 p.m.	<i>Conclusion of Breakout Session / Networking Reception Begins</i>

---

*\*This breakout session is designed for advanced practice providers and nurses.  
Space is limited for in-person participation, and early registration is strongly encouraged.*

# Schedule

All times listed on the schedule are presented in Eastern Daylight Time (EDT).

## SATURDAY, APRIL 11, 2026

8:00 a.m.	<i>Check-In and Breakfast (In-Person Participants)</i>
8:20 a.m.	<i>Zoom Sign-On and Virtual Check-In</i>
8:25 a.m.	<b>Welcome and Opening Remarks</b> Gilles Salles, MD, PhD

## Chronic Lymphocytic Leukemia

CHAIR	Ariela Noy, MD Nigel Gwini, MD
8:30 a.m.	<b>Recent Advances in the Management of Chronic Lymphocytic Leukemia</b> Andrew Zelenetz, MD, PhD
9:00 a.m.	<b>Mechanisms of Resistance to BTK Degraders</b> Quinlan Sievers, MD, PhD
9:15 a.m.	<b>Panel Discussion and Q&amp;A</b>

## Diffuse Large B-Cell Lymphoma

CHAIRS	Mark Roschewski, MD Pallawi Torka, MD
9:20 a.m.	<b>Concepts and Controversies in Aggressive B-Cell Lymphoma Classification</b> Rebecca King, MD
9:50 a.m.	<b>Insights into the Molecular Classification of Diffuse Large B-Cell Lymphoma</b> Daniel Hodson, PhD
10:20 a.m.	<i>Break</i>
10:40 a.m.	<b>Optimizing First-Line Therapy in Diffuse Large B-Cell Lymphoma</b> Jennifer Crombie, MD
11:05 a.m.	<b>Spotlight on New Agents and MSK Clinical Trials</b> Jennifer Lue, MD
11:20 a.m.	<b>Panel Discussion and Q&amp;A</b>

## CAR T-Cell Therapies in Large B-Cell Lymphoma: Who, When, and How?

CHAIRS	Lia Palomba, MD Craig Sauter, MD
11:40 a.m.	<b>CAR T-Cell Therapy: Lessons Learned from the DESCAR-T Registry</b> Emmanuel Bachy, MD, PhD

12:10 p.m.

**Bridging, Debulking, and Beyond:  
The Multifaceted Role of Radiotherapy with CAR T Cells  
and Bispecifics**

Brandon Imber, MD, MA

## Plenary Lecture

CHAIRS

Lia Palomba, MD  
Craig Sauter, MD

12:30 p.m.



**Designing the Next Generation of CAR T-Cell  
Therapies for Lymphoma**

Marcela Maus, MD, PhD

1:15 p.m.

**Panel Discussion and Q&A**

1:30 p.m.

**Closing Remarks**

Gilles Salles, MD, PhD

## Farewell Luncheon

1:30–2:30 p.m. • Zuckerman Lobby

*Join us for a final opportunity to network and connect with fellow attendees and faculty during a concluding luncheon.*

# Accreditation

Memorial Sloan Kettering Cancer Center is accredited by the Accreditation Council for Continuing Medical Education to provide continuing medical education for physicians.

## AMA Credit Designation Statement

Memorial Sloan Kettering Cancer Center designates this live activity for a maximum of **12.25 AMA PRA Category 1 Credits™**. Physicians should claim only the credit commensurate with the extent of their participation in the activity.

## MOC/CC Recognition Statements

Successful completion of this CME activity, which includes participation in the evaluation component, enables the participant to earn up to:

- 12.25 Medical Knowledge MOC points in the American Board of Internal Medicine's (**ABIM**) Maintenance of Certification (MOC) program; and
- 12.25 Lifelong Learning (CME) credits in the American Board of Pathology's (**ABPath**) Continuing Certification program.

It is the CME activity provider's responsibility to submit participant completion information to ACCME for the purpose of granting ABIM or ABPath MOC/CC credit.

## ANCC CNE Statement

Memorial Sloan Kettering Cancer Center–Nursing Professional Development / Continuing Education is accredited with distinction as a provider of nursing continuing professional development (NCPD) by the American Nurses Credentialing Center's Commission on Accreditation.

**12.75 contact hours** will be awarded to participants who attend the program in its entirety and complete a program evaluation.  
**Partial credit not awarded.**



# Registration

## Registration Fees

	<b>Early Rates</b> <i>(By February 13)</i>	<b>General Rates</b> <i>(After February 13)</i>
<b>Physicians (MDs, PhDs, DOs)</b>	\$400	\$450
<b>Advanced Practice Providers</b>	\$150	\$200
<b>Nurses &amp; Other Healthcare Professionals</b>	\$100*	\$150
<b>Residents, Fellows, &amp; Trainees</b>	\$50*	\$100*
<b>Industry Professionals</b>	N/A	\$785**
<b>MSK Employees</b>	Complimentary***	

\*Certain registration rates are non-refundable. Please review the cancellation policy for additional information.

\*\*An “industry professional” is defined as any individual, irrespective of their provider type (such as MDs, PhDs, APPs, RNs, etc.) that is employed by an ineligible company.

\*\*\*MSK employees receive complimentary registration for all CME programs by signing in with MSK credentials (SSO).

## Registration Discounts

Discounted registration is available for specific groups. If eligible, you will receive further instructions and a promotion code to use during registration. Full details are available on the symposium website.

**Early discounted rates available through February 13.**  
**Learn more and register:**

**[msk.org/LymphomaSymposium](https://msk.org/LymphomaSymposium)** >>



Memorial Sloan Kettering  
Cancer Center



Memorial Sloan Kettering  
Cancer Center

## Continuing Medical Education

[msk.org/cme](https://msk.org/cme)

Instagram ▶ [MSKcontinuingmedicaleducation](#)

LinkedIn ▶ [MSK-CME](#)

Facebook ▶ [MSKCME](#)

X ▶ [MSKCME](#)

Copyright 2026 © Memorial Sloan Kettering Cancer Center