



Geriatric Oncology Symposium

Rapid Diagnosis, Early Detection,
Risk Reduction, and Innovations

April 28, 2026 • Live Virtual Symposium



Memorial Sloan Kettering
Cancer Center

Overview

Aging is a significant risk factor for the development of cancer, and as the U.S. population continues to age, the demand for clinicians skilled in the care of older adults with cancer will continue to grow. Yet research suggests that common geriatric syndromes and the psychosocial needs of older oncology patients are often unintentionally overlooked or under-addressed.

This one-day, evidence-based virtual symposium is designed to enhance the care of older adults with cancer by advancing clinicians' knowledge, skills, and confidence in geriatric oncology practice. The program will explore innovative strategies to improve the rapid diagnosis and management of disease in older adults. Sessions will examine the complexities of multimorbidity, the importance of early disease detection, and approaches to reducing patient harm and optimizing care. Faculty will also highlight emerging advances in technology and digital health, illustrating how innovation is transforming the delivery of geriatric care.

Through a multidisciplinary lens, participants will gain practical insights into clinical tools, system-level solutions, and emerging research aimed at improving outcomes and quality of life for older adults with cancer.

Target Audience

his symposium is designed for physicians, advanced practice providers, registered nurses, CRNAs, residents, fellows, respiratory therapists, physical therapists, occupational therapists, social workers, case managers, and other healthcare professionals in medicine and surgery who provide care for the older adult.

Online Syllabus

Participants will receive access to an online syllabus after the symposium concludes, which will include recorded videos of the presentations as well as downloadable PDF versions of the faculty slide decks.



Keynote Speaker

The symposium will feature a keynote presentation by **Dr. Stephanie Nothelle**, Associate Professor of Medicine in the Division of Geriatric Medicine and Gerontology at Johns Hopkins University School of Medicine and a primary care physician in the Beacham Ambulatory Center for Geriatric Medicine.

Dr. Nothelle will share insights from her research on outpatient care models for older adults with complex and chronic illnesses.

Educational Objectives

- Identify strategies for implementing rapid diagnostic tools and workflows to accelerate timely and accurate disease detection in geriatric patients
- Discuss the importance of early detection and risk reduction strategies tailored to older adults to optimize health outcomes
- Evaluate emerging innovations in digital health and medical technology

Registration

This program will be held virtually via Zoom. Detailed access instructions will be provided prior to the start of the program.

- Physicians (MDs, PhDs, DOs): \$199
- Advanced Practice Providers: \$149
- Nurses and Other Healthcare Providers: \$99
- Residents and Fellows: \$25
- Industry Professionals: \$350
- MSK Employees: Complimentary

Discounted registration is available for specific groups. If eligible, you will receive further instructions and a promotion code to use during registration. For full program details and registration, visit the symposium website.

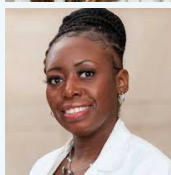
Faculty

Symposium Directors



Farrell Dearie, MMSc, PA-C

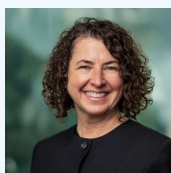
Physician Assistant, Gyn Surgical Oncology
Advanced Practice Provider IV
Memorial Sloan Kettering Cancer Center



Sincere McMillan, DNP, MS, RN, ANP-BC

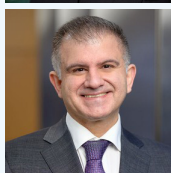
Nurse Practitioner Specialist, Geriatric Medicine
Advanced Practice Provider
Coordinator, Geriatric Oncology Subspecialty Track,
Advanced Practice Provider Fellowship
Memorial Sloan Kettering Cancer Center

Symposium Co-Directors



Corita Grudzen, MD, MSHS

Head, Division of Supportive and Acute Care Services, Department of Medicine
Fern Grayer Chair in Oncology Care and Patient Experience
Memorial Sloan Kettering Cancer Center



Armin Shahrokni, MD, MPH

Head, Geriatrics Section, Department of Medicine
Memorial Sloan Kettering Cancer Center

Advanced Practice Provider Sponsor

Nicole Zakak, MS, RN, CPNP, CPHON®

Director, Advanced Practice Provider Quality and Professional Development
Memorial Sloan Kettering Cancer Center

Symposium Planning Committee

Linda D'Andrea, MSN, RN, PPCNP, CPHON®

Advanced Practice Provider Specialist
Memorial Sloan Kettering Cancer Center

Soo Jung Kim, DNP, AGPCNP-BC

Nurse Practitioner
Memorial Sloan Kettering Cancer Center

**Linda McKenna, AGACNP-BC, ANP-BC,
CNS-C, CCRN-CMC**

Advanced Practice Provider Specialist
Memorial Sloan Kettering Cancer Center

Ndidi Okuesi, AGNP-BC

Advanced Practice Provider Fellow,
Geriatric Oncology
Memorial Sloan Kettering Cancer Center

Annette Roman, MSN, RN, NPD-BC, OCN®

Nursing Professional Development Specialist
Memorial Sloan Kettering Cancer Center

Symposium Speakers

Koshy Alexander, MD, MBA

Associate Attending, Geriatrics Service
Department of Medicine
Memorial Sloan Kettering Cancer Center

Jennifer Baranello, NP

Nurse Practitioner
Memorial Sloan Kettering Cancer Center

Kate Boskey, NP-C, ACHPN

Nurse Practitioner
Memorial Sloan Kettering Cancer Center

Kristen Fessele, PhD, RN, ANP-BC, AOCN®

Senior Nurse Scientist
Memorial Sloan Kettering Cancer Center

Jericho Garcia MSN, RN, NI-BC

Principal Application Analyst, Nursing
Epic ClinDoc & ASAP
Health Systems Operations

Shannon Larson, BSN, RN, CEN

Geriatric Program Coordinator and Nurse Educator
Sharp Grossmont Hospital

Alicia Latham, MD, MS

Medical Director, MSK-CATCH
Department of Medicine
Memorial Sloan Kettering Cancer Center

Stephanie Nothelle, MD

Associate Professor of Medicine
Division of Geriatric Medicine and Gerontology
Johns Hopkins University School of Medicine

Meghan Salvador, MSN, APRN-CNS, ACCNS-AG, OCN®

Oncology Nurse Navigator
Sharp Grossmont Hospital

Matthew P. Schiralli, MD, FACS

Executive Medical Director of Surgical Services
Rochester Regional Health

Armin Shahrokni, MD, MPH

Head, Geriatrics Section, Department of Medicine
Memorial Sloan Kettering Cancer Center

Margaret Wallhagen, PhD, GNP-BC, AGSF, FGSA, FAAN

Professor, Gerontological Nursing;
Geriatric Nurse Practitioner
UCSF Hartford Center of Gerontologic
Nursing Excellence

Memorial Sloan Kettering Cancer Center adheres to the ACCME's Standards for Integrity and Independence in Accredited Continuing Education. Any individuals in a position to control the content of a CE activity, including faculty, planners, reviewers, or others are required to disclose all financial relationships with ineligible companies (commercial interests). All relevant financial relationships are mitigated prior to the commencement of the activity.

Schedule


Tuesday • April 28, 2026

8:55 a.m. Attendee Zoom Sign-In and Check-In

Rapid Diagnosis

Moderator Sincere McMillan, DNP, MS, RN, ANP-BC

9:00 a.m. **Introduction and Welcome**
Sincere McMillan, DNP, MS, RN, ANP-BC

9:05 a.m.  **Keynote Address**
Caring for Patients with Multimorbidity
Stephanie Nothelle, MD

9:50 a.m. **RADAR and Older Adult with Cancer**
Armin Shahrokni, MD, MPH

10:20 a.m. **Q&A and Panel Discussion**

10:30 a.m. Break

Early Detection and Risk Reduction

Moderator Farrell Dearie, MMSc, PA-C

10:40 a.m. **Session Introduction**
Farrell Dearie, MMSc, PA-C

10:45 a.m. **Minimizing Postoperative Complications in Older Adults with Breast Cancer**
Jennifer Baranello, NP

11:05 a.m. **Good Time to Stop? Cancer Screening in High-risk Older Adults**
Alicia Latham, MD, MS

11:35 a.m. **Implications of Sensory Changes in Oncology Care**
Margaret Wallhagen, PhD, GNP-BC, AGSF, FGSA, FAAN

12:05 p.m. **Reducing Risk in an Age-friendly Environment**
Shannon Larson, BSN, RN, CEN
Meghan Salvador, MSN, APRN-CNS, ACCNS-AG, OCN®

12:35 p.m. **Q&A and Panel Discussion**

12:45 p.m. Lunch Break

Optimizing Care

Moderator Ndidi Okuesi, AGNP-BC

1:15 p.m. **Session Introduction**
Ndidi Okuesi, AGNP-BC

1:20 p.m. **Case Study**
Ndidi Okuesi, AGNP-BC

1:30 p.m.	CAIT Clinic Model: Updates on Risk Stratification Prior to Chemotherapy Koshy Alexander, MD, MBA
2:00 p.m.	Improving Care for Older Adults Undergoing Surgery: Implementing the American College of Surgeons' Geriatric Surgery Verification (GSV) Program Matthew P. Schiralli, MD, FACS
2:30 p.m.	Palliative Care and Geriatrics Service: Who Does What for Patients with Serious Illnesses? Kate Boskey, NP-C, ACHPN
2:50 p.m.	Q&A and Panel Discussion
3:00 p.m.	Break
Novel Technologies and Geriatric Oncology	
Moderator	Soo Jung Kim, DNP, AGPCNP-BC
3:20 p.m.	Session Introduction Soo Jung Kim, DNP, AGPCNP-BC
3:25 p.m.	Digital Health: Updates on Current Research Kristen Fessele, PhD, RN, ANP-BC, AOCN®
3:45 p.m.	EPIC Implementations: Lessons Learned Jericho Garcia MSN, RN, NI-BC
4:15 p.m.	Telehealth and the Older Adult <i>To be announced</i>
4:35 p.m.	Upcoming MSK Technology Innovations <i>To be announced</i>
4:55 p.m.	Q&A and Panel Discussion
5:05 p.m.	Closing Remarks and Adjournment Planning Committee

Accreditation

Memorial Sloan Kettering Cancer Center is accredited by the Accreditation Council for Continuing Medical Education to provide continuing medical education for physicians.

AMA Credit Designation Statement

Memorial Sloan Kettering Cancer Center designates this live activity for a maximum of **7.00 AMA PRA Category 1 Credits™**. Physicians should claim only the credit commensurate with the extent of their participation in the activity.

ABIM MOC Recognition Statement

Successful completion of this CME activity, which includes participation in the evaluation component, enables the participant to earn up to **7.00 MOC points** in the American Board of Internal Medicine's (ABIM) Maintenance of Certification (MOC) program. It is the CME activity provider's responsibility to submit participant completion information to ACCME for the purpose of granting ABIM MOC credit.

An application for **ANCC Nursing contact hours** has been submitted and is pending approval.





Memorial Sloan Kettering
Cancer Center

Continuing Medical Education

msk.org/cme

Instagram ► [MSKcontinuingmedicaleducation](#)

LinkedIn ► [MSK-CME](#)

Facebook ► [MSKCME](#)

X ► [MSKCME](#)

Copyright 2026 © Memorial Sloan Kettering Cancer Center