



2026 MSK Pulmo-Oncology Symposium

Friday, September 25, 2026

Flexible Learning Options



Memorial Sloan Kettering
Cancer Center

Overview

Pulmo-oncology is an emerging discipline at the intersection of pulmonary medicine and oncology, playing a critical role in the clinical care of patients with cancer. The respiratory system is often impacted by direct cancer involvement and toxicities stemming from the use of anti-neoplastic agents. Pre-existing pulmonary disorders affect patient outcomes and management decisions. Effective clinical management of pulmonary complications of cancer and its therapies requires an interdisciplinary approach.

Now in its fourth year, this symposium brings together **globally recognized experts from multiple disciplines** to present the latest advances in cancer therapies and best practices in the evaluation and management of lung disease. Through **state-of-the-art presentations and interdisciplinary, case-based discussions**, this symposium will explore key topics related to the care of cancer patients with pulmonary comorbidities and complications arising from cancer or its treatments.

Key Topics

- State-of-the-art updates in lung cancer treatment
- Clinical strategies for management of drug toxicities, symptoms, and co-existing pulmonary conditions
- Emerging AI-driven screening and continuous monitoring technologies as well as social media modalities into clinical management for cancer patients at risk of pulmonary complications

Complex clinical cases will be integrated throughout the program, with dedicated time for interactive multidisciplinary panel discussions that encourage meaningful engagement among faculty and participants.



Keynote Speaker

This year's program features a keynote presentation by **Gerard A. Silvestri, MD, MS**, professor of medicine and a lung cancer pulmonologist at the Medical University of South Carolina.

Target Audience

This symposium is intended for healthcare professionals in pulmonology, hematology/oncology, and related disciplines involved in the care of patients with cancer or those with a special interest in this area.

Credit Information

This activity has been approved to offer the following credit types.

- *AMA PRA Category 1 Credit(s)*[™]
- ABIM Maintenance of Certification (MOC)
- ABTS Maintenance of Certification (MOC)

Nursing continuing education credit is pending. Please note that ANCC Nursing contact hours are available only to participants of the live course. Nursing credit is not available for the on demand version.



Scan here to learn more or visit:
msk.org/Pulmo-Onc

Symposium Directors



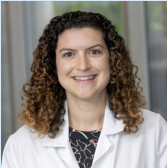
Leontine J.R. van Elden, MD, PhD

Associate Attending, Pulmonary Service,
Memorial Sloan Kettering Cancer Center



Elizabeth Yogiaveetil, MD

Assistant Attending, Pulmonary Service,
Memorial Sloan Kettering Cancer Center



Christina M. Hess, AGACNP-BC

Nurse Practitioner, Pulmonary Service,
Memorial Sloan Kettering Cancer Center

Symposium Planning Committee



Shanan Barua, MD

Fellow, Pulmonary & Critical Care Medicine,
Memorial Sloan Kettering Cancer Center



Michelle Cavuoto, MA, RN, OCN®

Clinical Nurse,
Memorial Sloan Kettering Cancer Center



Mohit Chawla, MD, FCCP

Chief, Pulmonary Service,
Memorial Sloan Kettering Cancer Center



Catherine Oberg, MD

Assistant Attending, Pulmonary Service,
Memorial Sloan Kettering Cancer Center



Gopi I. Patel, MD

Assistant Attending, Pulmonary Service,
Memorial Sloan Kettering Cancer Center

Symposium Faculty

MSK Faculty

Tafadzwa L. Chaunzwa, MD

Assistant Attending,
Department of Radiation Oncology

Robert Daly, MD, MBA

Associate Attending,
Thoracic Oncology Service

Saira Imran, MD

Assistant Attending,
Critical Care Medicine Service

Narek Shaverdian, MD

Associate Attending,
Department of Radiation Oncology

Timothy Tiutan, MD

Assistant Attending,
Hospital Medicine Service

Guest Faculty

Erica Altschul, MD

Pulmonary and Critical Care Medicine
Northwell Health
New York, NY

Alexander Geyer, MD

Department of Pulmonary Medicine
Cleveland Clinic
Cleveland, OH

Jennifer Possick, MD

Associate Professor, Pulmonary,
Critical Care and Sleep Medicine
Yale University School of Medicine
New Haven, CT

Michael Pritchett, DO, MPH

Interventional Pulmonology
Pinehurst Medical Clinic
Pinehurst, NC

Gerard A. Silvestri, MD, MS

Professor of Medicine
Department of Medicine
Medical University of South Carolina
Charleston, SC

Memorial Sloan Kettering Cancer Center adheres to the ACCME's Standards for Integrity and Independence in Accredited Continuing Education. All relevant financial relationships are mitigated prior to the commencement of the activity.

Agenda

All times listed in the agenda are Eastern Daylight Time (EDT).

| TIME | SESSIONS |
|-----------|---|
| 7:15 a.m. | Onsite Breakfast and Check-in |
| 7:50 a.m. | Virtual Check-in |
| 7:55 a.m. | Welcome and Introduction Leontine J.R. van Elden, MD, PhD |
| 8:00 a.m. | Keynote Presentation Gerard A. Silvestri, MD, MS |

SESSION I

Lung Cancer: Advances in Treatment and Mitigating Pulmonary Complications

MODERATOR: Catherine Oberg, MD

| | |
|------------|--|
| 9:00 a.m. | Updates on Lung Cancer Treatment To be announced |
| 9:25 a.m. | Bronchoscopic Ablation Therapy for Lung Cancer Michael Pritchett, DO, MPH |
| 9:50 a.m. | Mitigating Radiation-Induced Lung Injury Narek Shaverdian, MD |
| 10:15 a.m. | Break |
| 10:30 a.m. | Navigating Chronic and Refractory Immune Checkpoint Inhibitor-Related Pneumonitis Jennifer Possick, MD |
| 10:55 a.m. | Session Q&A |
| 11:00 a.m. | Complex Case Presentation and Panel Discussion CASE PRESENTER: To be announced |

SESSION II

Emerging Technologies, Telehealth, and Social Media

MODERATOR: Elizabeth Yogiaveetil, MD

CO-MODERATOR: Christina M. Hess, AGACNP-BC

| | |
|------------|---|
| 11:25 a.m. | Artificial Intelligence and Pneumonitis Modeling Tafadzwa Chaunzwa, MD |
| 11:50 a.m. | Lung Cancer Care and Monitoring in the Era of Telehealth Robert Daly, MD, MBA |

| | |
|------------|---|
| 12:15 p.m. | Lunch Break |
| 1:15 p.m. | Likes, Lies, and Lungs: Health Education in the Age of Social Media Timothy Tiutan, MD |
| 1:35 p.m. | Session Q&A |
| 1:40 p.m. | Complex Case Presentation and Panel Discussion CASE PRESENTER: Christina M. Hess, AGACNP-BC |

SESSION III

Managing Pulmonary Co-Morbidities, Complications, and Symptoms in the Cancer Patient

MODERATOR: Leontine J.R. van Elden, MD, PhD

CO-MODERATOR: Gopi I. Patel, MD

| | |
|-----------|---|
| 2:05 p.m. | Pulmonary Hypertension and Cancer Erica Altschul, MD |
| 2:30 p.m. | Supportive Care: Pulmonary Symptom Management To be announced |
| 2:55 p.m. | Break |
| 3:10 p.m. | Etiology and Management of Bronchiectasis in Cancer Patients Alex Geyer, MD |
| 3:35 p.m. | Management of Cancer Treatment-Related Pulmonary Complications in the ICU Saira Imran, MD |
| 4:00 p.m. | Session Q&A |
| 4:05 p.m. | Complex Case Presentation and Panel Discussion CASE PRESENTER: Shanan Barua, MD |
| 4:30 p.m. | Closing Remarks and Adjournment Leontine J.R. van Elden, MD, PhD |

Flexible Learning Options

Participate Live (In Person or Virtually)

Attend the course live onsite at MSK or virtually via Zoom on Friday, September 25, 2026. Participate in live Q&A sessions and case-based discussions with faculty. Live participants are eligible to claim credit for the live activity and will receive access to an online syllabus, available after the course concludes.

On Demand Access

Register for on demand access to view course materials and claim credit for the enduring activity at your convenience through March 31, 2027. You will be notified when the content becomes available (a few weeks after the live event on September 25, 2026).

Registration Fees

- Physicians (MDs, PhDs, DOs): \$300
- Advanced Practice Providers: \$250
- Residents and Fellows: \$100
- Nurses and Other Healthcare Professionals: \$150
- Industry Professionals: \$525*
- MSK Employees: Complimentary

Discounted registration is available for select groups, including trainees, MSK alumni/affiliates, and participants from low- and lower-middle-income countries.

**An industry professional is defined as any individual, irrespective of their provider type (such as MDs, PhDs, APPs, RNs, etc.) that is employed by an ineligible company.*



Scan here to learn more or visit:
msk.org/Pulmo-Onc



Memorial Sloan Kettering
Cancer Center

Continuing Medical Education

VISIT US ONLINE

msk.org/cme

[Instagram/MSKcontinuingmedicaleducation](https://www.instagram.com/MSKcontinuingmedicaleducation)

[LinkedIn /MSK-CME](https://www.linkedin.com/company/MSK-CME)

[Facebook/MSKCME](https://www.facebook.com/MSKCME)

[X/MSKCME](https://twitter.com/MSKCME)