

Memorial Sloan Kettering Cancer Center

CANCER TREATMENT UPDATE 2019

FRIDAY, JUNE 21

ROCKEFELLER RESEARCH LABORATORIES
NEW YORK, NY



Memorial Sloan Kettering
Cancer Center

mskcc.org/CTU



Memorial Sloan Kettering Cancer Center

CANCER TREATMENT UPDATE 2019

This annual update will provide attendees with a comprehensive overview of treatment advances for cancer patients featuring a faculty of experts from Memorial Sloan Kettering Cancer Center (MSK). By attending the symposium, participants will gain new knowledge in the advances of the most current cancer treatment by listening to the extraordinary expertise of the healthcare professionals at MSK.

The **target audience** for this course includes physicians, nurses and other healthcare providers from diverse specialties that provide care for cancer patients.

Live Simulcast Available

We are pleased to offer a live simulcast for this course, available to attendees unable to attend this course in person. CME and ABIM MOC credit will still be offered for the live simulcast and active participation is required throughout. For more information and to register, visit: mskcc.org/ctu

36th Annual National Corporate Medical Associates Meeting

Similar to last year, we are incorporating the 36th Annual NCMA Meeting into this course and expanding the audience to include community providers, MSK Direct members, and MSK employees interested in learning about new treatment advancements for cancer patients. Please note that active NCMA physician members and MSK Direct members are invited to attend the **2019 social event, DEAR EVAN HANSEN, the Tony Award[®]-winning Best Musical**.

Registration details will be emailed to all NCMA and MSK Direct members. If you did not receive an email, please contact cme@mskcc.org for details.

SCHEDULE

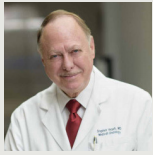


- 8:30 AM** **Registration & Breakfast**
- 9:00 AM** **Welcome**
Stephen R. Veach, MD
- 9:05 AM** **Course Introduction**
Lisa M. DeAngelis, MD
- 9:15 AM** **Brachytherapy: The Other Radiation Therapy**
Christopher Barker, MD
- 9:45 AM** **How to Grow a New Bone**
Daniel E. Prince, MD
- 10:15 AM** **Tumor Agnostic Targeted Therapy Drug Development**
Alexander Drilon, MD
- 10:45 AM** **Coffee Break**
- 11:00 AM** **The Role of Reconstruction and Microsurgery at MSK**
Evan Matros, MD, MMSc
- 11:30 AM** **Updates and Innovations in Cancer Pain Medicine**
Amitabh Gulati, MD
- 12:00 PM** **Cardiac Complications of Cancer Treatment**
Michael S. Baum, MD
- 12:30 PM** **Lunch Break**
- 1:15 PM** **Prevention of Bone Fragility Across the Cancer Spectrum: Osteoporosis to Advanced Cancer Involving the Bone**
Azeez Farooki, MD
- 1:45 PM** **OneMSK: An Update on the MSK Regional Care Network and Strategic Partnerships**
Oren Cahlon, MD
- 2:15 PM** **Immunotherapy in Lung Cancer**
Matthew D. Hellmann, MD
- 2:45 PM** **Coffee Break**
- 3:00 PM** **From Fish to Bedside: How to Understand Human Cancer Through the Eyes of the Zebrafish**
Richard Mark White, MD, PhD
- 3:30 PM** **Colorectal Cancer Screening**
Robin Mendelsohn, MD
- 4:00 PM** **Treatment Updates in Acute Myeloid Leukemia**
Eytan M. Stein, MD
- 4:30 PM** **MSK Integrative Medicine Research Update**
Ting Bao, MD, DABMA, MS

Attendee & Faculty Networking Reception • 5:00-6:00 PM

MSK COURSE FACULTY

MSK Course Director

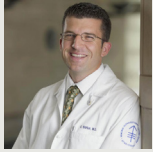


Stephen R. Veach, MD
Attending Physician
Thoracic Oncology Service
Department of Medicine

MSK Course Faculty



Ting Bao, MD, DABMA, MS
Director, Integrative Breast Oncology
Assistant Attending
Breast Medicine Service
Integrative Medicine Service
Department of Integrative Medicine



Christopher Barker, MD
Director of Clinical Investigation
Assistant Attending
External Beam Radiotherapy Service
Brachytherapy Service
Department of Radiation Oncology



Michael S. Baum, MD
Attending
Cardiology Service
Department of Medicine



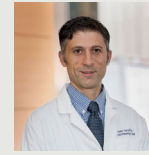
Oren Cahlon, MD
Associate Deputy Physician-in-Chief, Regional Care Network
Vice Chair, Department of Radiation Oncology
Associate Attending
External Beam Radiotherapy Service
Brachytherapy Service



Lisa M. DeAngelis, MD
Acting Physician-in-Chief, Memorial Hospital
Lillian Rojzman Berkman Chair in Honor of Jerome B. Posner



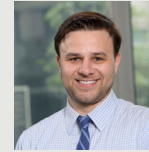
Alexander Drilon, MD
Clinical Director, Early Drug Development Service
Associate Attending
Early Drug Development Service
Thoracic Oncology Service
Department of Medicine



Azeez Farooki, MD
Associate Attending
Endocrinology Service
Department of Medicine



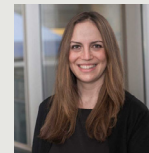
Amitabh Gulati, MD
Director, Chronic Pain
Associate Attending
Pain Service
Department of Anesthesiology-Critical Care



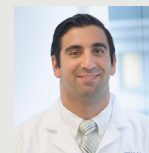
Matthew D. Hellmann, MD
Associate Attending
Thoracic Oncology Service
Department of Medicine



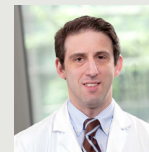
Evan Matros, MD, MMSc
Associate Attending
Plastic and Reconstructive Surgical Service
Department of Surgery



Robin Mendelsohn, MD
Assistant Attending
Gastroenterology, Hepatology and Nutrition Service
Department of Medicine



Daniel E. Prince, MD
Assistant Attending
Orthopaedic Service
Department of Surgery



Eytan M. Stein, MD
Assistant Attending
Leukemia Service
Department of Medicine



Richard Mark White, MD, PhD
Associate Member
Gastrointestinal Oncology Service
Sloan Kettering Institute

mskcc.org/ctu

Join the conversation: [#MSKCTUCME](https://twitter.com/MSKCTUCME)



Friday, June 21, 2019

Memorial Sloan Kettering Cancer Center
Rockefeller Research Laboratories
430 East 67th Street
New York, NY

REGISTRATION

NCMA & MSK Direct Members

Registration details for this event will be emailed to all NCMA and MSK Direct Members. If you did not receive an email, please contact cme@mskcc.org.

Please note that active NCMA physician members and MSK Direct members are invited to attend the **2019 social event, DEAR EVAN HANSEN, the Tony Award®-winning Best Musical**.

Other Invitees

Physicians (MDs, PhDs and DOs)	\$250
Residents, Fellows and Other Healthcare Professionals	\$150
Live Simulcast (all attendees)	\$450

Registration includes continental breakfast, lunch, and refreshment breaks. Please contact cme@mskcc.org at least one week prior to the course if you have any special dietary needs.

- **MSK CME offers a 30% discounted rate for MSK Alumni, MSK Cancer Alliance and Cancer Care Partners.** If you are a member of one of these groups, please contact cme@mskcc.org for more information.
- **MSK employee registration is complimentary.** However, you must complete course registration in order to attend this course.

Please note that MSK has negotiated special rates and amenities at select hotels in Manhattan. For information on hotels in the area of MSK with discounted rates, please visit: mskcc.org/cme.

Register online: mskcc.org/ctu

ACCREDITATION



Memorial Sloan Kettering Cancer Center is accredited by the Accreditation Council for Continuing Medical Education to provide continuing medical education for physicians.

AMA Credit Designation Statement

Memorial Sloan Kettering Cancer Center designates this live activity for a maximum of **6.75 AMA PRA Category 1 Credits™**. Physicians should claim only the credit commensurate with the extent of their participation in the activity.



ABIM MOC Recognition Statement

Successful completion of this CME activity, which includes participation in the evaluation component, enables the participant to earn up to **6.75 Medical Knowledge MOC points** in the American Board of Internal Medicine's (ABIM) Maintenance of Certification (MOC) program. Participants will earn MOC points equivalent to the amount of CME credits claimed for the activity. It is the CME activity provider's responsibility to submit participant completion information to ACCME for the purpose of granting ABIM MOC credit.

Faculty Disclosure

It is the policy of MSK to make every effort to insure balance, independence, objectivity, and scientific rigor in all continuing medical education activities which it provides as an ACCME accredited provider. In accordance with ACCME guidelines and standards, all faculty participating in an activity provided by MSK are expected to disclose any significant financial interest or other relationship with the manufacturer(s) of any commercial product(s) and/or provider(s) of commercial services which are discussed by the faculty members in an educational presentation. As required by the ACCME, when an unlabeled use of a commercial product or an investigational use not yet approved for any purpose is discussed during an educational activity, MSK requires the speaker to disclose that the product is not labeled for the use under discussion or that the product is still investigational.



Memorial Sloan Kettering
Cancer Center