

LIVE SIMULCAST

2019 CRITICAL CARE SYMPOSIUM

TUESDAY, MARCH 26



Optional
Pediatric Critical Care
Session Available.

mskcc.org/CriticalCare



Memorial Sloan Kettering
Cancer Center

2019 Critical Care Symposium

LIVE SIMULCAST

This symposium is designed to provide a general overview of various critical care topics and will include an optional simulation based training day using bedside ultrasonography, a pediatric critical care breakout session, and a live simulcast option for attendees unable to attend in person.

This course is intended for nurse practitioners, physician assistants, nurses, physicians and other healthcare professionals interested in critical care.

Symposium Learning Objectives

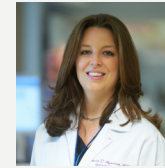
- Understand likely etiological organisms and therapeutic regimens for fungal infections
- Discuss different mechanical interventions for pulmonary embolus
- Describe current goal directed strategies to enhance quality of CPR
- Decipher common abnormalities on various radiology examinations
- Provide an overview of common causes of hemoptysis in the oncology population including tumor related bleeding and diffuse alveolar hemorrhage
- Understand the diagnosis and management of increased intracranial pressure
- Discuss the pathophysiology and treatment of cardiac tamponade
- Understand the diagnosis and treatment of surgical emergencies

Pediatric Critical Care Breakout Objectives

- Discuss the management of pediatric surgical emergencies
- Describe the management of patients undergoing immunomodulator treatment, common complications and management
- Understand current guidelines of Pediatric Acute Respiratory Distress Syndrome (ARDS)
- Describe current transfusion strategies for patients in Pediatric Intensive Care Units

We are pleased to offer a **live simulcast** for the 2019 Critical Care Symposium. Attendees registered for the live simulcast option will receive detailed instructions via email prior to the start of the course. This will include information on how to engage with faculty and how to claim CME credit. Please note that active participation throughout the live simulcast is encouraged. **Please note the live simulcast is only available for the lecture sessions being held on Tuesday, March 26.**

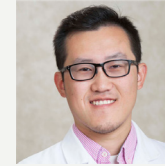
MSK Course Directors



Rhonda L. D'Agostino,
ACNP-BC, CCRN, FCCM, FCCP
Associate Director, Critical Care Center
Director, Advanced Practice Providers



Neil A. Halpern,
MD, MCCM, FCCP, FACP
Director, Critical Care Center
Chief, Critical Care Medicine Service
Medical Director, Respiratory Therapy

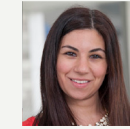


Leon Chen,
DNP, AGACNP-BC, CCRN, CEN, FCCP
Clinical Program Manager, Research and Simulated Learning
APP, Critical Care Center

MSK Planning Committee



Ann Landrove,
AGACNP-BC, CCRN
APP, Critical Care Center



Christine Ammirati,
PA-C
APP Specialist, Education
APP, Critical Care Center



Cassie Martinez,
MSN, CPNP-AC, CCRN
APP, Critical Care Center



Elizabeth Gordon,
MSN, CPNP-AC
APP, Critical Care Center

MSK Course Faculty

Christopher Anderson, MS, PA-C, MBA

J. Ted Gerstle, MD

James S. Killinger, MD, FCCM

Eileen McAleer, MD

Peter Mead, MD

Deborah Stein, ACNP-BC, CCRN

Caitlin Treacy, AGACNP-BC, CCRN

Invited Course Faculty

Bruce M. Greenwald, MD, FAAP, FCCM
Weill Cornell Medical College

Jeffrey P. Greenfield, MD, PhD
Weill Cornell Medical College

Elie Harmouche, MD
NYU Langone Medical Center

Joy D. Howell, MD, FAAP, FCCM
Weill Cornell Medical College

Lindsay Lief, MD
New York Presbyterian Hospital

Marianne Nellis, MD, MS
Weill Cornell Medical College

Felipe Teran, MD
Hospital of the University of Pennsylvania

Heath Walden, MD
Maimonides Medical Center

mskcc.org/CriticalCare

Tuesday, March 26

All times are Eastern Standard Time (EST).

8:00 AM	Welcome & Introduction Rhonda L. D'Agostino, ACNP-BC, CCRN, FCCM, FCCP
8:05 AM	Toxicologic Bradycardia Elie Harmouche, MD
8:45 AM	An Echodynamic Approach to Shock: Integrating Echocardiography to Guide Hemodynamic Decisions Felipe Teran, MD
9:25 AM	Invasive Fungal Infections Peter Mead, MD
10:00 AM	Break
10:10 AM	Clinical Implications of Heart-Lung Interactions During Mechanical Ventilation Joy D. Howell, MD, FAAP, FCCM
10:50 AM	Bloody, Scary Situations: Hemoptysis and Critical Care Medicine Deborah Stein, ACNP-BC, CCRN
11:15 AM	Diagnosis and Management of Elevated ICP in the ICU Jeffrey P. Greenfield, MD, PhD
11:50 AM	Lunch Break
12:50 PM	Radiology Cases: A Picture is Worth a Thousand Words Christopher Anderson, MS, PA-C, MBA
1:30 PM	Cardiac Tamponade: Pearls in Diagnosis and Management Eileen McAleer, MD
2:15 PM	Break
2:30 PM	Individualized Care for High-Risk Pulmonary Embolism Lindsay Lief, MD
3:15 PM	Surgical Emergencies Heath Walden, MD
4:00 PM	Medical Jeopardy Caitlin Treacy, AGACNP-BC, CCRN
4:55 PM	Closing Remarks Rhonda L. D'Agostino, ACNP-BC, CCRN, FCCM, FCCP
5:00 PM	Adjourn

Pediatric Critical Care Breakout Session

This pediatric breakout session is designed to present the latest professional topics and provide up-to-date clinical care in the Pediatric Intensive Care Unit.

1:00 PM	Pediatric ARDS: A New Entity? Historical Perspectives and Current Truths Bruce M. Greenwald, MD, FAAP, FCCM
1:40 PM	Transfusion Medicine Marianne Nellis, MD, MS
2:20 PM	Break
2:35 PM	Emerging Cancer Therapies in the Pediatric ICU James S. Killinger, MD, FCCM
3:20 PM	Surgical Emergencies J. Ted Gerstle, MD
4:05 PM	Adjourn

Registration Details

Live Simulcast Registration Fee	\$450
---------------------------------	-------

Register Online:
mskcc.org/CriticalCare

You will receive detailed instructions via email prior to the start of the course. This will include information on how to engage with the faculty as well as information on how to claim CME credits - active participation throughout the live simulcast is encouraged. For inquiries regarding the simulcast, please email cme@mskcc.org.

- **MSK CME offers a 30% discounted rate for MSK Alumni, MSK Cancer Alliance and Cancer Care Partners.** If you are a member of one of these groups, please contact cme@mskcc.org for more information.
- **MSK employee registration is complimentary.** However, you must complete course registration in order to attend this course.

Accreditation

Memorial Sloan Kettering Cancer Center is accredited by the Accreditation Council for Continuing Medical Education to provide continuing medical education for physicians.



AMA Credit Designation Statement

Memorial Sloan Kettering Cancer Center designates this live activity for a maximum of **7.50 AMA PRA Category 1 Credits™**. Physicians should claim only the credit commensurate with the extent of their participation in the activity.

Faculty Disclosure

It is the policy of MSK to make every effort to insure balance, independence, objectivity, and scientific rigor in all continuing medical education activities which it provides as an ACCME accredited provider. In accordance with ACCME guidelines and standards, all faculty participating in an activity provided by MSK are expected to disclose any significant financial interest or other relationship with the manufacturer(s) of any commercial product(s) and/or provider(s) of commercial services which are discussed by the faculty members in an educational presentation. As required by the ACCME, when an unlabeled use of a commercial product or an investigational use not yet approved for any purpose is discussed during an educational activity, MSK requires the speaker to disclose that the product is not labeled for the use under discussion or that the product is still investigational.



Memorial Sloan Kettering
Cancer Center

mskcc.org/cme | cme@mskcc.org