

MARCH 26-27

Memorial Sloan Kettering Cancer Center
New York, NY

2019 CRITICAL CARE SYMPOSIUM



Optional Hands-on
Ultrasound Workshop and
Pediatric Critical Care
Session Available.

mskcc.org/CriticalCare



Memorial Sloan Kettering
Cancer Center

2019 Critical Care Symposium

This symposium is designed to provide a general overview of various critical care topics and will include an optional simulation based training day using bedside ultrasonography, a pediatric critical care breakout session, and a live simulcast option for attendees unable to attend in person.

This course is intended for nurse practitioners, physician assistants, nurses, physicians and other healthcare professionals interested in critical care.

Symposium Learning Objectives

- Understand likely etiological organisms and therapeutic regimens for fungal infections
- Discuss different mechanical interventions for pulmonary embolus
- Describe current goal directed strategies to enhance quality of CPR
- Decipher common abnormalities on various radiology examinations
- Provide an overview of common causes of hemoptysis in the oncology population including tumor related bleeding and diffuse alveolar hemorrhage
- Understand the diagnosis and management of increased intracranial pressure
- Discuss the pathophysiology and treatment of cardiac tamponade
- Understand the diagnosis and treatment of surgical emergencies

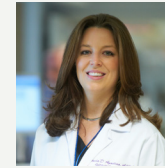
Ultrasound Workshop Objectives

- Understand the basic indications of point of care ultrasonography
- Understand the basic principles of vascular, thoracic and cardiac point of care ultrasonography
- Recognize gross ultrasonographic abnormalities of common pathologies
- Acquire basic hands-on ultrasound image acquisition skills

Pediatric Critical Care Breakout Objectives

- Discuss the management of pediatric surgical emergencies
- Describe the management of patients undergoing immunomodulator treatment, common complications and management
- Understand current guidelines of Pediatric Acute Respiratory Distress Syndrome (ARDS)
- Describe current transfusion strategies for patients in Pediatric Intensive Care Units

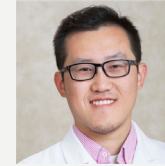
MSK Course Directors



Rhonda L. D'Agostino,
ACNP-BC, CCRN, FCCM, FCCP
Associate Director, Critical Care Center
Director, Advanced Practice Providers

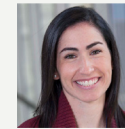


Neil A. Halpern,
MD, MCCM, FCCP, FACP
Director, Critical Care Center
Chief, Critical Care Medicine Service
Medical Director, Respiratory Therapy

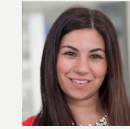


Leon Chen,
DNP, AGACNP-BC, CCRN, CEN, FCCP
Clinical Program Manager, Research and Simulated Learning
APP, Critical Care Center

MSK Planning Committee



Ann Landrove,
AGACNP-BC, CCRN
APP, Critical Care Center



Christine Ammirati,
PA-C
APP Specialist, Education
APP, Critical Care Center



Cassie Martinez,
MSN, CPNP-AC, CCRN
APP, Critical Care Center



Elizabeth Gordon,
MSN, CPNP-AC
APP, Critical Care Center

MSK Course Faculty

Christopher Anderson, MS, PA-C, MBA

Tara Buchholz, ACNP-BC, CCRN

J. Ted Gerstle, MD

James S. Killinger, MD, FCCM

Yulia Kit, PA-C

Eileen McAleer, MD

Elena Mead, MD

Peter Mead, MD

Eunhye Newman, MS, ACNP-BC

Deborah Stein, ACNP-BC, CCRN

Caitlin Treacy, AGACNP-BC, CCRN

Joanna Yohannes-Tomicich, MS, AGACNP-BC

Invited Course Faculty

Bruce M. Greenwald, MD, FAAP, FCCM
Weill Cornell Medical College

Jeffrey P. Greenfield, MD, PhD
Weill Cornell Medical College

Elie Harmouche, MD
NYU Langone Medical Center

Joy D. Howell, MD, FAAP, FCCM
Weill Cornell Medical College

Lindsay Lief, MD
New York Presbyterian Hospital

Marianne Nellis, MD, MS
Weill Cornell Medical College

Felipe Teran, MD
Hospital of the University of Pennsylvania

Heath Walden, MD
Maimonides Medical Center

A live simulcast is available for the lecture sessions on Tuesday, March 26. Visit mskcc.org/CriticalCare for more information or to register.

mskcc.org/CriticalCare

LOCATION: **Zuckerman Research Center**

| | |
|-----------------|--|
| 7:30 AM | Registration & Breakfast |
| 8:00 AM | Welcome & Introduction Rhonda L. D'Agostino, ACNP-BC, CCRN, FCCM, FCCP |
| 8:05 AM | Toxicologic Bradycardia Elie Harmouche, MD |
| 8:45 AM | An Echodynamic Approach to Shock: Integrating Echocardiography to Guide Hemodynamic Decisions Felipe Teran, MD |
| 9:25 AM | Invasive Fungal Infections Peter Mead, MD |
| 10:00 AM | Break |
| 10:10 AM | Clinical Implications of Heart-Lung Interactions During Mechanical Ventilation Joy D. Howell, MD, FAAP, FCCM |
| 10:50 AM | Bloody, Scary Situations: Hemoptysis and Critical Care Medicine Deborah Stein, ACNP-BC, CCRN |
| 11:15 AM | Diagnosis and Management of Elevated ICP in the ICU Jeffrey P. Greenfield, MD, PhD |
| 11:50 AM | Lunch |
| 12:50 PM | Radiology Cases: A Picture is Worth a Thousand Words Christopher Anderson, MS, PA-C, MBA |
| 1:30 PM | Cardiac Tamponade: Pearls in Diagnosis and Management Eileen McAleer, MD |
| 2:15 PM | Break |
| 2:30 PM | Individualized Care for High-Risk Pulmonary Embolism Lindsay Lief, MD |
| 3:15 PM | Surgical Emergencies in the ICU Heath Walden, MD |
| 4:00 PM | Medical Jeopardy Caitlin Treacy, AGACNP-BC, CCRN |
| 4:55 PM | Closing Remarks Rhonda L. D'Agostino, ACNP-BC, CCRN, FCCM, FCCP |
| 5:00 PM | Adjourn |

Pediatric Critical Care Breakout Session

LOCATION: **Rockefeller Research Laboratories** (Room 116)

This pediatric breakout session is designed to present the latest professional topics and provide up-to-date clinical care in the Pediatric Intensive Care Unit.

| | |
|----------------|---|
| 1:00 PM | Pediatric ARDS: A New Entity? Historical Perspectives and Current Truths Bruce M. Greenwald, MD, FAAP, FCCM |
| 1:40 PM | Transfusion Medicine Marianne Nellis, MD, MS |
| 2:20 PM | Break |
| 2:35 PM | Emerging Cancer Therapies in the Pediatric ICU James S. Killinger, MD, FCCM |
| 3:20 PM | Surgical Emergencies J. Ted Gerstle, MD |
| 4:00 PM | Adjourn (Return to auditorium for Medical Jeopardy.) |

Ultrasound Workshop (Optional)

LOCATION: **Rockefeller Research Laboratories** (Rooms 116 & 117)

| | |
|-----------------|---|
| 7:30 AM | Breakfast |
| 8:00 AM | Welcome & Introduction Leon Chen, DNP, AGACNP-BC, CCRN, CEN, FCCP |
| 8:05 AM | Knobology/Physics Elena Mead, MD |
| 8:45 AM | Vascular Ultrasound Joanna Yohannes-Tomicich, MS, AGACNP-BC |
| 9:25 AM | GROUP A: Image Review Yulia Kit, PA-C |
| | GROUP B: Hands-on Session |
| 9:50 AM | GROUP B: Image Review Yulia Kit, PA-C |
| | GROUP A: Hands-on Session |
| 10:15 AM | Break |
| 10:25 AM | Thoracic Ultrasound Elena Mead, MD |
| 11:00 AM | GROUP A: Image Review Eunhye Newman, MS, ACNP-BC |
| | GROUP B: Hands-on Session |
| 11:40 AM | GROUP B: Image Review Eunhye Newman, MS, ACNP-BC |
| | GROUP A: Hands-on Session |
| 12:20 PM | Lunch |
| 1:20 PM | Cardiac Ultrasound Leon Chen, DNP, AGACNP-BC, CCRN, CEN, FCCP |
| 1:50 PM | GROUP A: Image Review Joanna Yohannes-Tomicich, MS, ACNP-BC |
| | GROUP B: Hands-on Session |
| 2:40 PM | GROUP B: Image Review Joanna Yohannes-Tomicich, MS, AGACNP-BC |
| | GROUP A: Hands-on Session |
| 3:30 PM | Closing Remarks Leon Chen, DNP, AGACNP-BC, CCRN, CEN, FCCP |
| 3:35 PM | Adjourn |

Point of care ultrasound is now an indispensable tool for emergency and critical care providers. Our workshop is aimed at helping providers gain a foundational understanding of point of care ultrasonography and basic skills to acquire and interpret ultrasound images. We will do so through didactics, guided image interpretation and supervised hands-on image acquisition on live models.

Students should feel confident after the workshop that they gained the foundation and is equipped for further skill advancements through education and practice in the future.



Accreditation

Memorial Sloan Kettering Cancer Center is accredited by the Accreditation Council for Continuing Medical Education to provide continuing medical education for physicians.



AMA Credit Designation Statement

Memorial Sloan Kettering Cancer Center designates this live activity for a maximum of **13.75 AMA PRA Category 1 Credits™**. Physicians should claim only the credit commensurate with the extent of their participation in the activity.

ANCC CNE Statement

Memorial Sloan Kettering Cancer Center - Nursing Professional Development/Continuing Education is accredited with distinction as a provider of continuing nursing education by the American Nurses Credentialing Center's Commission on Accreditation.

7.50 contact hours will be awarded to participants who attend a live program, in its entirety, and complete a program evaluation. Partial credit not awarded.

Faculty Disclosure

It is the policy of MSK to make every effort to insure balance, independence, objectivity, and scientific rigor in all continuing medical education activities which it provides as an ACCME accredited provider. In accordance with ACCME guidelines and standards, all faculty participating in an activity provided by MSK are expected to disclose any significant financial interest or other relationship with the manufacturer(s) of any commercial product(s) and/or provider(s) of commercial services which are discussed by the faculty members in an educational presentation. As required by the ACCME, when an unlabeled use of a commercial product or an investigational use not yet approved for any purpose is discussed during an educational activity, MSK requires the speaker to disclose that the product is not labeled for the use under discussion or that the product is still investigational.

Registration

| | |
|---|-------|
| Lectures (NP, PA, MD, and Other Healthcare Providers) | \$250 |
| Lectures (Students) | \$150 |
| Lectures (Industry Professionals*) | \$440 |
| Ultrasound Workshop (Optional) | \$400 |

*Industry professionals may attend MSK CME activities for their own education. Marketing, sales, and promotion of products and services is strictly prohibited at MSK CME activities.

Register Online:
mskcc.org/CriticalCare

Course registration includes continental breakfast, lunch, and refreshment breaks. Please contact cme@mskcc.org at least one week prior to the course if you have any special dietary requests or require any specific accommodations.

- **MSK CME offers a 30% discounted rate for MSK Alumni, MSK Cancer Alliance and Cancer Care Partners.** If you are a member of one of these groups, please contact cme@mskcc.org for more information.
- **MSK employee registration is complimentary.** However, you must complete course registration in order to attend this course.

Symposium Location

The symposium will be held at the following locations:

Lecture Sessions - Tuesday, March 26

Zuckerman Research Center
 417 East 68th Street
 New York, NY 10065

Pediatric Breakout Session - Tuesday, March 26 Ultrasound Workshop - Wednesday, March 27

Rockefeller Research Laboratories
 430 East 67th Street
 New York, NY 10065

Please note that the Live Simulcast is only available for the lecture sessions on Tuesday, March 26.

Accommodations

For information on hotels in the vicinity of MSK with discounted rates, please visit: mskcc.org/cme.

Contact

Memorial Sloan Kettering Cancer Center
 Office of Continuing Medical Education
mskcc.org/cme
cme@mskcc.org



Memorial Sloan Kettering
 Cancer Center