

2020 CRITICAL CARE SYMPOSIUM



Sunday-Monday, April 5-6

Memorial Sloan Kettering Cancer Center
Zuckerman Research Center
New York City

**Ultrasound & Respiratory Workshops,
Pediatric Critical Care Breakout Session,
& Live Simulcast Available**



Memorial Sloan Kettering
Cancer Center



Symposium Overview

This two day symposium is designed to provide a general overview of various critical care topics. Day 1 will include two hands-on simulation workshop options focused on either ultrasonography or respiratory techniques. Day 2 will include didactic lectures and a pediatric critical care breakout session, along with a live simulcast option for attendees unable to attend in person.

This course is intended for nurse practitioners, physician assistants, nurses, respiratory therapists, physicians and other healthcare professionals interested in critical care.

Day 1, Sunday, April 5 • Optional Hands-on Workshops

Option A: Ultrasound Workshop

Point of care ultrasound is now an indispensable tool for emergency and critical care providers. Our workshop is aimed at helping providers gain a foundational understanding of point of care ultrasonography and basic skills to acquire and interpret ultrasound images. We will do so through didactics, guided image interpretation and supervised hands-on image acquisition on live models. Students should feel confident after the workshop that they gained the foundation and is equipped for further skill advancements through education and practice in the future.

Ultrasound Workshop Objectives

- Understand the basic indications of point of care ultrasonography.
- Understand the basic principles of vascular, thoracic and cardiac point of care ultrasonography.

Option B: Respiratory Workshop*

Respiratory care is at the mainstay of modern critical care medicine. Our workshop is aimed at helping providers gain knowledge in various ventilator modes and other modalities such as bronchoscopy, HFNC, and noninvasive ventilation. This will be done with the use of didactics, and supervised hands on demonstration.

Respiratory Workshop Objectives

- Describe common modes of ventilation, frequently used ventilator settings, and troubleshooting.
- Discuss the basic principles and strategies to improve ventilation and oxygenation in critically ill patients.

*An application has been made to the American Association for Respiratory Care (AARC) for continuing education contact hours for respiratory therapists.



Day 2, Monday, April 6 • Symposium Lecture Day

Symposium Objectives

- Identify the various therapeutic regimes for community acquired (CAP), hospital acquired (HAP), and ventilator acquired pneumonia (VAP).
- Decipher common abnormalities on various radiology examinations.
- Discuss different mechanical interventions for pulmonary embolus.
- Identify signs and symptoms of spinal cord compression.
- Describe and discuss various check point inhibitors.
- Discuss dyspnea and signs of pulmonary embolism in ICU patients.
- Understand various complications of stem cell transplants.
- Discuss cardiac toxicities of various cancer treatments.

Optional Pediatric Critical Care Breakout Session

This session is designed to present the latest professional topics and provide up-to-date clinical care in the Pediatric Intensive Care Unit.

Pediatric Breakout Objectives

- Describe current guidelines for pharmacological management in CRRT, ECMO, and malnourished states.
- Apply the principles of EXMO in pediatric hematopoietic stem cell transplantation.
- Discuss the diagnosis and management of pediatric delirium.
- Discuss non-invasive ventilation in critically ill children in low- and middle-income countries.
- Review pediatric airway complications and provider management.
- Understand the complications of CAR-T Cell therapy.
- Review the advances of minimally invasive surgery in the pediatric oncology population.



Live Simulcast Available (Monday, April 6th)

We are pleased to offer a live simulcast option for this course, available for the lectures on day two only. CME credit is offered for the live simulcast and pre-registration is required. We do hope you will attend in person but understand that can sometimes be a challenge, so we are happy to offer the live simulcast as an option. For details and registration, visit: mskcc.org/criticalcare

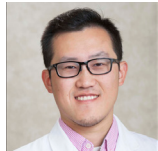
MSK Course Directors



Christine Ammirati, PA-C
APP Manager, Intensive Care Unit
APP, Critical Care Center



Melissa Barzola, MSN, ACNP-BC, CCRN
Associate Director, Critical Care Center
Director of Advanced Practice Providers



Leon Chen, DNP, AGACNP-BC, FCCP, FAANP
Clinical Program Manager, Research and Simulated Learning
APP, Critical Care Center



Neil A. Halpern, MD, MCCM, FCCP, FACP
Director, Critical Care Center
Chief, Critical Care Medicine Service
Medical Director, Respiratory Therapy

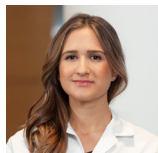
MSK Planning Committee



Ann Landrove, MSN, AGACNP-BC, CCRN
APP, Critical Care Center



Cassie Martinez, MSN, CPNP-AC, CCRN
APP Specialist, Pediatrics
APP, Critical Care Center



Elizabeth Gordon, MSN, CPNP-AC
APP Manager, Pediatrics
APP, Critical Care Center



Leslie V. Clermont, RRT-BS
Education Coordinator
Respiratory Therapy

Invited Course Faculty

Christina Cardy, DNP
Director of Advanced Practice Providers
University of South Florida Health

Stephen Haskins, MD
Attending Physician
Hospital for Special Surgery

James Horowitz, MD
Attending Physician
NYU Langone Medical Center

Umesh Joashi, MD
Attending Physician
Pediatric Critical Care
New York Presbyterian
Weill Cornell Hospital

Lindsay Lief, MD
Attending Physician
New York Presbyterian
Weill Cornell Hospital

Jonathan de Olano, MD
Attending Physician
Emory University School of Medicine

Chani Traube, MD
Attending Physician
Pediatric Critical Care
New York Presbyterian
Weill Cornell Hospital

Patrick Wilson, MD
Attending Physician
Pediatric Critical Care
New York Presbyterian
Morgan Stanley Children's Hospital

MSK Course Faculty

Vittoria Arslan Carlon, MD
Director, Pediatric Anesthesia

Sara Bekele, NP
Advance Practice Provider

Tara Buchholz, NP
Education Specialist, SACU

Kevin Curran, MD
Attending Physician
Pediatric Bone Marrow Transplantation
and Cellular Therapies

Todd Heaton, MD
Attending Physician
Pediatric Surgery

Yasmin Khakoo, MD
Director, Child Neurology Program

Vivek Malhotra, MD
Attending Physician
Chief Anesthesiology Pain Service

David Mao, MD
Attending Physician

Alina Markova, MD
Attending Physician

Linda McKenna, NP
Advance Practice Provider

Elena Mead, MD
Attending Physician

Peter Mead, MD
Attending Physician

Aida Milcetic, NP
Advance Practice Provider

Lane Nguyen, PharmD
Clinical Pharmacy Specialist
Pediatric Critical Care

Andrea Palmieri, NP
Advance Practice Provider

Ankur Patel, MD
Neurosurgery Fellow

Sarah Rebal, NP
APP Specialist, ICU Fellowship

Ben Record, MD
Director, Pediatric Pain Management

Christina Rocks, RRT
Respiratory Therapist

Deborah Stein, NP
APP Fellowship Manager

Robin Szymkiewicz, RRT
Respiratory Therapist

Kate Tayban, NP
Advance Practice Provider Manager
Specialized Advance Care Unit

Phat Tran, NP
Advance Practice Provider

Joanna Yohannes-Tomicich, MS, AGACNP-BC
Education Specialist, ICU

Anthony Yu, MD
Attending Physician

Day 1 Schedule

SUNDAY, APRIL 5

Ultrasound Workshop

7:30 AM	Breakfast and Registration
8:00 AM	Welcome and Introduction Leon Chen, DNP, AGACNP-BC, FCCP, FAANP
8:05 AM	Knobology/Physics Elena Mead, MD
8:45 AM	Vascular Ultrasound Joanna Yohannes-Tomicich, MS, AGACNP-BC
9:25 AM	GROUP A: Image Review Leon Chen, DNP, AGACNP-BC, FCCP, FAANP GROUP B: Hands-On Session
9:50 AM	GROUP B: Image Review Leon Chen, DNP, AGACNP-BC, FCCP, FAANP GROUP A: Hands-On Session
10:15 AM	Break
10:25 AM	Thoracic Ultrasound Elena Mead, MD
11:00 AM	GROUP A: Image Review Leon Chen, DNP, AGACNP-BC, FCCP, FAANP GROUP B: Hands-On Session
11:40 AM	GROUP B: Image Review Leon Chen, DNP, AGACNP-BC, FCCP, FAANP GROUP A: Hands-On Session
12:20 PM	Lunch Break
1:20 PM	Cardiac Ultrasound Leon Chen, DNP, AGACNP-BC, FCCP, FAANP
1:50 PM	GROUP A: Image Review Joanna Yohannes-Tomicich, MS, AGACNP-BC GROUP B: Hands-On Session
2:40 PM	GROUP B: Image Review Joanna Yohannes-Tomicich, MS, AGACNP-BC GROUP A: Hands-On Session
3:30 PM	Adjourn

Respiratory Workshop

7:30 AM	Breakfast and Registration
8:00 AM	Introduction to Session Leslie V. Clermont, RRT-BS
8:15 AM	HFNC Concept and Application Robin Szymkiewicz, RRT
8:45 AM	Non-invasive Ventilation When is it Appropriate Christina Rocks, RRT
9:15 AM	APRV Concept and Application Leslie V. Clermont, RRT-BS
10:30 AM	Break
10:45 AM	Hands-On Session Leslie V. Clermont, RRT-BS Robin Szymkiewicz, RRT Christina Rocks, RRT
12:00 PM	Adjourn



Day 2 Schedule

MONDAY, APRIL 6

Symposium Lecture Day

7:30 AM	Breakfast and Registration
8:05 AM	Empiric Antibiotic Management for Pneumonia Peter Mead, MD
8:35 AM	Dyspnea: An Invisible Epidemic in the ICU Lindsay Lief, MD
9:05 AM	Dermatologic Emergencies in the Critical Care Setting Alina Markova, MD
9:25 AM	CXR Basics Kate Tayban, NP
9:40 AM	Under PRESSure: Update on Diagnosis and Management of Posterior Reversible Encephalopathy Syndrome Yasmin Khakoo, MD
10:10 AM	Break
10:20 AM	Non Epidural Regional Anesthesia Ben Record, MD
10:50 AM	Spinal Cord Compression Linda McKenna, NP
11:05 AM	Status Epilepticus David Mao, MD
11:20 AM	Evaluation and Management of Patients with Intracerebral Hemorrhage Ankur Patel, MD
11:35 AM	Keeping an ICU Current; A Retrospective Neil A. Halpern, MD, MCCM, FCCP, FACP
12:05 PM	Latest Highs and Lows: Today's Drugs of Abuse Jonathan de Olano, MD
12:35 PM	Lunch



Memorial Sloan Kettering
Cancer Center



Symposium Lecture Day Continued

1:30 PM	An Introduction to Checkpoint Inhibitors and Associated Toxicities Deborah Stein, NP
1:50 PM	Cardiovascular Toxicities of Cancer Therapy Anthony Yu, MD
2:15 PM	Complications of Hematopoietic Stem Cell Transplant Sara Bekele, NP
2:45 PM	Atrial Fibrillation in the Critically Ill Patient Christina Cardy, DNP
3:15 PM	Break
3:25 PM	Reading Squiggles on a Screen: Interpreting Patient/Ventilator Interactions During Pressure Control Ventilation Elena Mead, MD
3:45 PM	Perioperative Point-of-Care Ultrasound Stephen Haskins, MD
4:15 PM	Pulmonary Embolism: Diagnosis, Treatment, and Management James Horowitz, MD
4:45 PM	Managing Epidural Complications Aida Milcetic, NP Vivek Malhotra, MD
5:15 PM	Adjourn

Pediatric Critical Care Breakout Session

1:30 PM	Pediatric Delirium Chani Traube, MD
2:00 PM	Non-Invasive Ventilation in Critically Ill Children In Low- and Middle-Income Countries Patrick Wilson, MD
2:30 PM	ECMO in Hematopoietic Stem Cell Transplantation Umesh Joashi, MD
3:00 PM	Break
3:15 PM	Pediatric Airway Complications and Management Vittoria Arslan Carlon, MD
3:45 PM	Complications of CAR-T Cell Therapy Kevin Curran, MD
4:15 PM	Pharmacokinetic Principles during CRRT, ECMO, and Malnutrition in Critically Ill Children. Lane Nguyen, PharmD
4:45 PM	Advances in Minimally Invasive Surgery in the Pediatric Cancer Patient Todd Heaton, MD
5:15 PM	Adjourn

Accreditation

Memorial Sloan Kettering Cancer Center is accredited by the Accreditation Council for Continuing Medical Education to provide continuing medical education for physicians.



AMA Credit Designation Statement

Memorial Sloan Kettering Cancer Center designates this live activity for a maximum of **14.25 AMA PRA Category 1 Credits™**. Physicians should claim only the credit commensurate with the extent of their participation in the activity.

ANCC CNE statement

Memorial Sloan Kettering Cancer Center–Nursing Professional Development /Continuing Education is accredited with distinction as a provider of nursing continuing professional development (NCPD) by the American Nurses Credentialing Center’s Commission on Accreditation.



8.10 contact hours will be awarded to participants who attend the program in its entirety and complete a program evaluation. Partial credit not awarded

AARC Contact Hours (Respiratory Workshop only)

An application has been made to the American Association for Respiratory Care (AARC) for continuing education contact hours for respiratory therapists.

Faculty Disclosure

It is the policy of MSK to make every effort to insure balance, independence, objectivity, and scientific rigor in all continuing medical education activities which it provides as an ACCME accredited provider. In accordance with ACCME guidelines and standards, all faculty participating in an activity provided by MSK are expected to disclose any significant financial interest or other relationship with the manufacturer(s) of any commercial product(s) and/or provider(s) of commercial services which are discussed by the faculty members in an educational presentation. As required by the ACCME, when an unlabeled use of a commercial product or an investigational use not yet approved for any purpose is discussed during an educational activity, MSK requires the speaker to disclose that the product is not labeled for the use under discussion or that the product is still investigational.

MSK Kids

MSK Kids, Memorial Sloan Kettering’s pediatric program, is dedicated to all children, young adults, and families facing childhood cancer. With specialized expertise and care focused on the individual child, we’re proud to say that more families turn to us for cancer care than any other hospital in the United States. And as pioneers in research, no one fights harder than our physicians and scientists to develop and deliver more effective strategies to prevent, treat, and ultimately cure childhood cancer—for our patients at MSK Kids, and for those everywhere.

For more information, visit mskcc.org/kids

Registration

Registration Fees	Early	General
Symposium Lectures - Monday, April 6		
NP, PA, Respiratory Therapist, MD & Other Healthcare Providers	\$200	\$250
Students	\$100	\$150
Industry Professional**	n/a	\$440
Live Simulcast	n/a	\$300
Optional Workshop Add-on - Sunday, April 5		
Option A: Ultrasound Workshop	n/a	\$400
Option B: Respiratory Workshop	n/a	\$100

*Early Registration Rates Available Through February 7, 2020.

**Industry professionals may attend MSK CME activities for their own education. Marketing, sales, and promotion of products and services is strictly prohibited at MSK CME activities.

Register online: mskcc.org/criticalcare

The in-person course registration includes continental breakfast, lunch, and refreshment breaks. Please contact cme@mskcc.org at least one week prior to the course if you have any special dietary requests or require any specific accommodations.

Registration Discounts/Promotions

- **MSK Alumni, MSK Cancer Alliance and Cancer Care Partner Discounts Available.** Please contact cme@mskcc.org for more information or a promotion code.
- **MSK employee registration is complimentary.** However, you must complete course registration in order to attend this course.



This symposium is endorsed by the The Nurse Practitioner Association (NPA). MSK CME is pleased to offer a registration discount for all NPA members. Please contact cme@mskcc.org for more information or a promotion code.

Cancellation Policy

Live Simulcast registrations are non-refundable. For all other orders, if you cancel your participation in this course, your registration fee, less a \$75 administrative fee, will be refunded when email notification is received by the MSK Office of Continuing Medical Education (MSK CME) at least 7 days prior to the first day of the course (cme@mskcc.org).

Cancellations or no-shows after this date are not eligible for a refund. MSK CME reserves the right to cancel or postpone any course due to unforeseen circumstances. In the unlikely event we must cancel or postpone this course, we will refund the registration fee in full, but are not responsible for any related costs, charges, or expenses to participants, including fees incurred by airline/travel/lodging agencies. At any time, you may substitute another registrant in your place after contacting MSK CME with the relevant information. Switching from an in person registration to a simulcast registration requires an additional fee.



Location

Memorial Sloan Kettering Cancer Center
Zuckerman Research Center
417 East 68th Street
New York, NY

MSK has negotiated special rates and amenities at select hotels in Manhattan. For more information, visit: mskcc.org/criticalcare

Contact

Memorial Sloan Kettering Cancer Center
Continuing Medical Education
mskcc.org/cme
cme@mskcc.org



Memorial Sloan Kettering
Cancer Center

2020
**CRITICAL CARE
SYMPOSIUM**



Memorial Sloan Kettering
Cancer Center