

2018

# Current Paradigms in Interventional Pulmonology

Endobronchial Ultrasound  
& Lung Cancer Staging



FRIDAY • SEPTEMBER 7, 2018

Zuckerman Research Center  
New York



Memorial Sloan Kettering  
Cancer Center



# Course Overview

Endobronchial ultrasound has quickly become the standard of care, along with advanced peripheral bronchoscopy techniques, in the diagnosis and staging of thoracic malignancy, including primary and metastatic disease, as well as benign disease, such as sarcoidosis and tuberculosis. Optimally performing these procedures, in appropriate patients, is paramount. Suboptimal procedures greatly impair diagnostic yield. Furthermore, handling and processing the acquired specimens is often an afterthought by the bronchoscopist. This well-received annual CME course reviews these crucial advanced diagnostic and staging procedures, how to optimize performance in a multidisciplinary fashion and provides hands-on workshops with expert faculty.

## Target Audience

This course is intended for practicing Pulmonologists, Intensivists and Thoracic Surgeons, as well as trainees, interested in advancing their understanding of endobronchial ultrasound (EBUS), interventional bronchoscopy for diagnostics, including radial endobronchial ultrasound and navigation, and cytologic specimen processing.

## Educational Objectives

- Improved understanding of the science, application and performance of Endobronchial Ultrasound and Lymph Node Staging
- Improved understanding of the science, application and performance of Advanced Diagnostic Bronchoscopy for Peripheral Pulmonary Lesions, including radial endobronchial ultrasound and navigational bronchoscopy
- Improved understanding of the science, application and performance of Cytology and Specimen Processing



Endorsed by the American Association for Bronchology and Interventional Pulmonology (AABIP)

## MSK Course Director



### Robert P. Lee, MD

Assistant Director, Section of Interventional Pulmonology  
Director, Pleural Diseases  
Program Director, Interventional Pulmonology Fellowship  
Pulmonary Medicine Service

## MSK Course Co-Directors



### Mohit Chawla, MD

Chief, Pulmonary Service  
Director, Section of Interventional Pulmonology



### Nicholas Vander Els, MD

Director, Pulmonary Function Laboratories  
Section of Interventional Pulmonology  
Pulmonary Medicine Service

## MSK Course Faculty

### Aakash Modi, MD

Fellow, Section of Interventional Pulmonology  
Pulmonary Medicine Service

### Bernard J. Park, MD

Attending Surgeon  
Deputy Chief of Clinical Affairs, Thoracic Service  
Department of Surgery

### Catherine Bautista, RN

Clinical Nurse II  
Section of Interventional Pulmonology  
Pulmonary Medicine Service

## Invited Course Faculty

### Sergio Bures, MD

Assistant Director of Pulmonary Medicine  
CareMount Medical  
Katonah, NY

### Bryan Husta, MD

Director of Interventional Pulmonology  
Lenox Hill Hospital  
New York, NY

### Andre Moreira, MD, PhD

Director of Surgical Pathology/  
Pulmonary Pathology  
New York University  
New York, NY

### Alberto Revelo, MD

Interventional Pulmonology  
Ohio State University  
Columbus, OH

### Harsh Shah, MD

Director of Interventional Pulmonology  
Ohio State University  
Columbus, OH

### Michael Simoff, MD

Program Director of Interventional  
Pulmonology Fellowship  
Henry Ford Hospital  
Detroit, MI

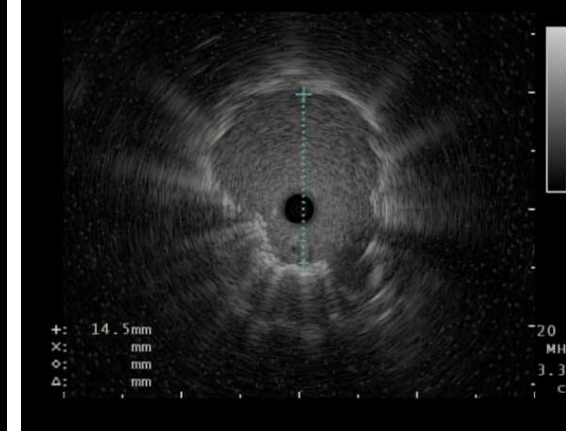
### Daniel Sterman, MD

Director of Division of Pulmonary,  
Critical Care, and Sleep Medicine  
New York University  
New York, NY

# Scientific Agenda

7:00-8:00 AM	Registration and Breakfast
8:00-9:00 AM	<b>Department of Medicine Grand Rounds</b> <b>Robotic Bronchoscopy and Peripheral Lung Nodule Therapeutics: The Future is Here</b> Michael Simoff, MD
9:00-9:10 AM	<b>Welcome &amp; Introduction</b> Robert Lee, MD
9:15-9:30 AM	<b>Lymph Node Anatomy and Lung Cancer Staging</b> Aakash Modi, MD
9:35-9:55 AM	<b>Transitioning from Conventional TBNA to EBUS TBNA</b> Nicholas Vander Els, MD
10:00-10:20 AM	<b>EBUS TBNA in Private Practice</b> Sergio Bures, MD
10:25-10:45 AM	<b>Surgical Staging in Mediastinum</b> Bernard J. Park, MD
10:50-11:00 AM	Questions and Break
11:05-11:20 AM	<b>Basics of Ultrasound Physics for EBUS</b> Alberto Revelo, MD
11:25-11:55 AM	<b>EBUS TBNA</b> Michael Simoff, MD
12:00-12:20 PM	<b>EBUS TBNA: Cytology and Molecular Analysis</b> Andre Moreira, MD, PhD
12:25-12:45 PM	<b>EBUS TBNA: Lymphoma, Sarcoid, and Tuberculosis</b> Robert Lee, MD
12:50-1:30 PM	Lunch
1:35-1:55 PM	<b>EBUS TBNA: Practical Tips and Team Collaboration</b> Mohit Chawla, MD Catherine Bautista, RN
2:00-2:20 PM	<b>Radial EBUS for Peripheral Lung Nodules</b> Harsh Shah, MD
2:25-2:45 PM	<b>Navigation Bronchoscopy for Peripheral Lung Nodules</b> Bryan Husta, MD
2:50-3:10 PM	<b>The Pulmonologist's Role in Multidisciplinary Lung Cancer Team</b> Daniel Serman, MD
3:10-3:15 PM	Questions and Break
3:15-5:00 PM	<b>Hands-On Workshops*</b> <ul style="list-style-type: none"><li>• EBUS-TBNA</li><li>• Cytology &amp; Specimen Processing</li><li>• Radial EBUS</li><li>• Navigation</li></ul>
5:00 PM	Adjourn

\*The optional hands-on workshops are limited to 30 participants to allow for maximum interaction with course faculty and ample hands-on experience.



## Hands-On Workshops

Space is **limited to 30 attendees** only in order to allow each participant sufficient opportunity to interact with faculty - please be sure to register early. After the 30 hands-on slots are filled, attendees may register for the lecture-only portion.

### Workshop Objectives:

- Develop proficiency in operating the EBUS scope and the needle
- Practice sampling the lymph nodes on a 3D model under one on one expert guidance
- Understand the steps in operating the radial EBUS probe and interpreting the image
- Understand how to prepare appropriate cytologic specimen

Additional fees do apply for the workshop; please see registration for details.

*Join the conversation!*

**#MSKIPCME**

 @MSKCME

 /MSKCME

 MSKCME Group



# Registration Information

## REGISTRATION FEES

<b>Lectures:</b> Physicians (MDs, PhDs and DOs)	<b>\$400</b>
<b>Lectures:</b> Trainees, Nurses, PAs, Respiratory Therapists, Students, and other Healthcare Providers	<b>\$150</b>
<b>Workshop:</b> Optional Add-On	<b>\$195</b>

## Register Online: [mskcc.org/IPCourse](https://mskcc.org/IPCourse)

Registration includes continental breakfast, lunch, and refreshment breaks. Please contact [cme@mskcc.org](mailto:cme@mskcc.org) at least one week prior to the course if you have any special dietary needs.

- **30% Discounted Rate for MSK Alumni and MSK Alliance Members:** MSK offers a 30% discounted rate to all MSK Alumni and MSK Alliance members to attend a CME course. Please contact [cme@mskcc.org](mailto:cme@mskcc.org) for a promotion code or more information.
- **MSK Staff Registration:** Registration is complimentary for MSK staff. However, you must register online: [mskcc.org/IPCourse](https://mskcc.org/IPCourse)

## Accreditation

MSK is accredited by the Accreditation Council for Continuing Medical Education (ACCME) to provide continuing medical education for physicians.



## AMA CREDIT DESIGNATION STATEMENT

MSK designates this live activity for a maximum of **7.75 AMA PRA Category 1 Credit(s)**<sup>™</sup>. Physicians should only claim credit commensurate with the extent of their participation in the activity.

## CE CREDITS

This course will not offer nursing CE credits. Nurses will receive a non-physician CME certificate for AMA PRA Category 1 Credit(s)<sup>™</sup>. Certain nursing certification providers (such as ANCC) may accept this certificate for CE requirements. Please check with your certification providers for more

## FACULTY DISCLOSURE

It is the policy of MSK to make every effort to insure balance, independence, objectivity, and scientific rigor in all continuing medical education activities which it provides as an ACCME accredited provider. In accordance with ACCME guidelines and standards, all faculty participating in an activity provided by MSK are expected to disclose any significant financial interest or other relationship with the manufacturer(s) of any commercial product(s) and/or provider(s) of commercial services which are discussed by the faculty members in an educational presentation. As required by the ACCME, when an unlabeled use of a commercial product or an investigational use not yet approved for any purpose is discussed during an educational activity, MSK requires the speaker to disclose that the product is not labeled for the use under discussion or that the product is still investigational.



## Location

Memorial Sloan Kettering Cancer Center  
Mortimer B. Zuckerman Research Center  
417 East 68th Street  
New York, NY 10065

## ACCOMMODATIONS

MSK has negotiated special rates and amenities at select hotels in Manhattan. For information on hotels in the area of MSK with discounted rates, please visit: [mskcc.org/cme](https://mskcc.org/cme).

## CONTACT

Memorial Sloan Kettering Cancer Center  
Office of Continuing Medical Education

**W:** [mskcc.org/cme](https://mskcc.org/cme)

**E:** [cme@mskcc.org](mailto:cme@mskcc.org)



Memorial Sloan Kettering  
Cancer Center