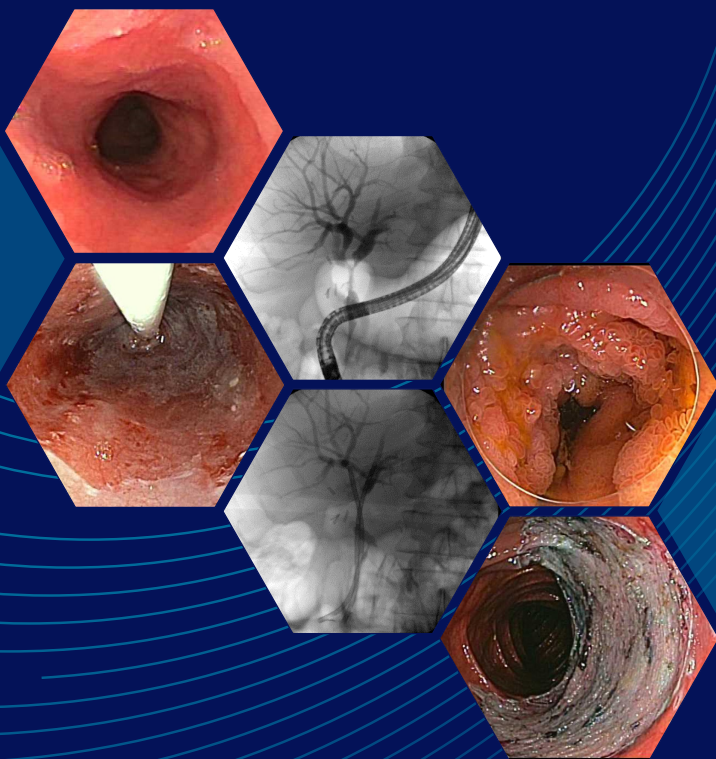


MARCH 15, 2024 • NEW YORK, NY

Approach to Gastrointestinal Premalignant and Malignant Disorders

A 2024 UPDATE



Memorial Sloan Kettering
Cancer Center

Overview

Early recognition and management of premalignant gastrointestinal disorders are important in the prevention and early detection of cancer. With advances in our understanding of the pathogenesis and natural history of premalignant and malignant GI disorders, treatment algorithms continue to evolve. Emerging endoscopic techniques also play an important role in the diagnosis and management of these patients.

This one-day course will focus on the approach to the management of gastrointestinal premalignant and malignant disorders. It will update the participant on the **diagnosis, management, and surveillance of various disorders involving the luminal GI, liver, and pancreaticobiliary tracts.**

Topics will include medical, endoscopic, and surgical management of Barrett's esophagus with dysplasia, gastric intestinal metaplasia, *Helicobacter pylori*, gastric carcinoids, ampullary adenomas, hilar biliary obstruction, pancreas cyst lesions, hepatocellular carcinoma, inflammatory bowel disease with dysplasia, immunotherapy related GI complications, large colon polyps, early age onset colon cancer, surveillance for individuals at high-risk for pancreas cancer, hereditary gastric cancer, chemoprevention for Lynch syndrome and familial adenomatous polyposis and GI surveillance for emerging genetic mutations. The course will utilize **didactic lectures as well as interactive clinical case presentations.**



LEARNING OBJECTIVES

At the conclusion of this course, learners will be able to:

- Describe the management of Barrett's esophagus with dysplasia
- Discuss the role of endoscopic submucosal dissection for upper GI neoplasia/early malignancy
- Review the management of gastric intestinal metaplasia, helicobacter pylori and carcinoids
- Describe the endoscopic management of ampullary adenomas
- Explain the approach to treating hilar biliary obstruction
- Recognize management options for pancreas cyst lesions
- Recall surveillance strategies for hepatocellular carcinoma
- Determine the treatment of inflammatory bowel disease with dysplasia
- Discuss the approach to managing immunotherapy-related GI complications
- Evaluate innovative endoscopic techniques for treating large colon polyps
- Examine the risk factors and surveillance strategies for early age onset colon cancer
- Identify increased-risk populations to screen for pancreas cancer
- Describe the approach to management of hereditary gastric cancer
- Discuss chemoprevention for Lynch syndrome and familial adenomatous polyposis
- Apply GI surveillance strategies for emerging genetic mutations

WHO SHOULD ATTEND

This course is intended physicians and other health care professionals who care for patients with gastrointestinal, liver, and pancreaticobiliary disorders, including gastroenterologists, surgical oncologists, medical oncologists, clinical geneticists, genetic counselors, surgical pathologists, fellows, residents, physician assistants, nurse practitioners, and registered nurses.

COURSE LOCATION

This course is set to be an **exclusively in-person event** at Memorial Sloan Kettering (a virtual option is not available).



Rockefeller Research Laboratories
430 East 67th Street
New York, NY

Ample time will be provided for networking and professional collaboration.

COURSE SYLLABUS

Attendees will receive access to an online syllabus after the conclusion of the overall course, which includes select PDFs of presentations (slides) and video recordings of the lectures.

MSK COURSE DIRECTORS



Arnold J. Markowitz, MD, FASGE, NYSGEF

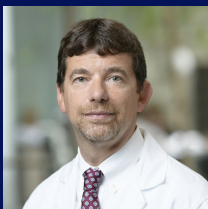
Attending Physician
Director, Advanced Endoscopy Fellowship Program
Gastroenterology, Hepatology & Nutrition Service



Robin B. Mendelsohn, MD, FASGE, NYSGEF

Associate Attending Physician
Director, Clinical Nutrition Fellowship Program
Co-Director, Center for Young Onset Colorectal
and Gastrointestinal Cancers
Clinical Director, Gastroenterology, Hepatology
& Nutrition Service

MSK COURSE PLANNING COMMITTEE



Mark A. Schattner, MD, FASGE, AGAF

Attending Physician
Chief, Gastroenterology, Hepatology & Nutrition Service



Seung Eun Lee, MD

Fellow
Gastroenterology, Hepatology & Nutrition Service



Mitigation of Relevant Financial Relationships

Memorial Sloan Kettering Cancer Center adheres to the ACCME's Standards for Integrity and Independence in Accredited Continuing Education. Any individuals in a position to control the content of a CE activity, including faculty, planners, reviewers, or others are required to disclose all financial relationships with ineligible companies (commercial interests). All relevant financial relationships have been mitigated prior to the commencement of the activity.

INVITED COURSE FACULTY

Gregory J. Gores, MD

Reuben R. Eisenberg Professor of Medicine and Physiology
College of Medicine
Kinney Executive Dean for Research
Mayo Clinic
Rochester, MN

Galen Leung, MD

Assistant Professor of Clinical Medicine
Division of Gastroenterology and Hepatology
University of Pennsylvania Perelman School of Medicine
Philadelphia, PA

Hazar Michael, MD

Therapeutic endoscopist - Summit Health/VillageMD
Overlook Medical Center
Summit, NJ

David B. Purow, MD

Assistant Professor
Donald and Barbara Zucker School of Medicine at Hofstra/Northwell
Chair of Medical Board of Medicine - Gastroenterology
Chair of Medicine - Gastroenterology
Huntington Hospital
Huntington, NY

Andrew B. Rosenberg, MD

Assistant Professor
Donald and Barbara Zucker School of Medicine at Hofstra/Northwell
Northwell Health Gastroenterology Associates at Uniondale
Uniondale, NY

MSK COURSE FACULTY

Hassan Azhari, MD

Assistant Attending Physician
Gastroenterology, Hepatology
& Nutrition Service

Jacques C. Beauvais, MD

Assistant Attending Physician
Gastroenterology, Hepatology
& Nutrition Service

Anne Covey, MD

Attending Radiologist
Interventional Radiology Service

David Faleck, MD

Assistant Attending Physician
Director of Inflammatory and
Immune-Related Bowel Diseases
Gastroenterology, Hepatology
& Nutrition Service

Maya Gambarin-Gelwan, MD

Associate Attending Physician
Director, Hepatology, Gastroenterology,
Hepatology & Nutrition Service

Hans Gerdes, MD

Attending Physician
Director, GI Endoscopy Unit
Gastroenterology, Hepatology
& Nutrition Service

Monika Laszkowska, MD

Assistant Attending Physician
Gastroenterology, Hepatology
& Nutrition Service

Alicia Latham, MD, MS

Assistant Attending Physician
Medical Director, MSK-CATCH
Clinical Genetics Service

Emmy Ludwig, MD

Associate Attending Physician
Director, Gastroenterology Fellowship
Program, Hepatology
Gastroenterology, Hepatology
& Nutrition Service

Rachel Niec, MD, PhD, MS

Assistant Attending Physician
Gastroenterology, Hepatology
& Nutrition Service

Makoto Nishimura, MD

Attending Physician
Gastroenterology, Hepatology
& Nutrition Service

Vineet Syan Rolston, MD

Assistant Attending Physician
Director, MSK Familial Pancreatic
Tumor Registry
Gastroenterology, Hepatology
& Nutrition Service

Moshe Shike, MD

Attending Physician
Director, Clinical Nutrition
Gastroenterology, Hepatology
& Nutrition Service

Kevin C. Soares, MD

Assistant Attending Surgeon
Hepatopancreatobiliary Service

MSK CASE PRESENTERS**Dennis De Leon Morilla, MD**

Fellow
Gastroenterology, Hepatology
& Nutrition Service

William Mitchell, MD

Fellow
Gastroenterology, Hepatology
& Nutrition Service

Tarek Nammour, MD

Advanced Endoscopy Fellow
Gastroenterology, Hepatology
& Nutrition Service


Schedule

FRIDAY, MARCH 15, 2024 • 7:00 AM — 4:55 PM

- 7:00 AM Registration and Breakfast
- 8:00 AM **Course Welcome and Introduction**
Arnold J. Markowitz, MD
Robin B. Mendelsohn, MD

Department of Medicine Grand Rounds and Sidney J. Winawer, MD Lectureship

MODERATOR: Mark A. Schattner, MD

- 8:05 AM **Introduction to Sidney J. Winawer, MD Lectureship**
Mark A. Schattner, MD
- 8:10 AM  **Liver Transplantation for the Oncology Patient: Beyond HCC**
Gregory J. Gores, MD
Mayo Clinic
- 8:50 AM **Q&A**

Upper Gastrointestinal Tract

MODERATOR: Hans Gerdes, MD

- 9:10 AM **Barrett's Esophagus with Dysplasia**
Hans Gerdes, MD
- 9:25 AM **Endoscopic Submucosal Dissection for Upper GI Neoplasia/Cancer**
Jacques C. Beauvais, MD
- 9:40 AM **Gastric Intestinal Metaplasia and H. Pylori**
Monika Laszkowska, MD
- 9:55 AM **Gastric Carcinoids**
Mark A. Schattner, MD
- 10:10 AM **CASE PRESENTATION**
CASE PRESENTER: Seung Eun Lee, MD
- 10:25 AM **Panel Discussion and Q&A**
PANELISTS: Jacques C. Beauvais, MD • Monika Laszkowska, MD • Mark A. Schattner, MD • Andrew B. Rosenberg, MD
- 10:40 AM Break

Liver and Pancreaticobiliary Tract

MODERATOR: Maya Gambarin-Gelwan, MD

- 11:00 AM **Ampullary/Periampullary Adenomas**
Galen Leung, MD
- 11:15 AM **Hilar Biliary Obstruction**
Anne Covey, MD
- 11:30 AM **Pancreas Cysts**
Kevin C. Soares, MD
- 11:45 AM **Hepatocellular Carcinoma**
Hassan Azhari, MD
- 12:00 PM **CASE PRESENTATION**
CASE PRESENTER: Tarek Nammour, MD
- 12:15 PM **Panel Discussion and Q&A**
MODERATOR: Mark A. Schattner, MD, FASGE, AGAF
PANELISTS: Maya Gambarin-Gelwan, MD • Galen Leung, MD • Anne Covey, MD • Kevin C. Soares, MD • Hassan Azhari, MD • Andrew B. Rosenberg, MD • Hazar Michael, MD
- 12:30 PM Lunch Break

Hereditary Gastrointestinal Disorders

MODERATOR: Emmy Ludwig, MD

- 1:30 PM **Screening for Pancreas Cancer in High-Risk Individuals**
Vineet Syan Rolston, MD
- 1:45 PM **Hereditary Gastric Cancer**
Monika Laszkowska, MD
- 2:00 PM **Chemoprevention for Lynch Syndrome and Familial Adenomatous Polyposis**
Arnold J. Markowitz, MD
- 2:15 PM **GI Surveillance for Emerging Genetic Mutations**
Alicia Latham, MD, MS
- 2:30 PM **CASE PRESENTATION**
CASE PRESENTER: William Mitchell, MD
- 2:45 PM **Panel Discussion and Q&A**
PANELISTS: Vineet Syan Rolston, MD • Monika Laszkowska, MD • Arnold J. Markowitz, MD • Alicia Latham, MD, MS • David B. Purow, MD
- 3:00 PM Break

Lower Gastrointestinal Tract

MODERATOR: Moshe Shike, MD

- 3:20 PM **Inflammatory Bowel Disease with Dysplasia**
Rachel Niec, MD, PhD, MS
- 3:35 PM **Immunotherapy-Related GI Complications**
David Faleck, MD
- 3:50 PM **Endoscopic Techniques for Large Colorectal Polyps**
Makoto Nishimura, MD
- 4:05 PM **Early Age Onset Colorectal Cancer**
Robin B. Mendelsohn, MD
- 4:20 PM **CASE PRESENTATION**
CASE PRESENTER: Dennis De Leon Morilla, MD
- 4:35 PM **Panel Discussion and Q&A**
PANELISTS: Rachel Niec, MD, PhD, MS • David Faleck, MD •
Makoto Nishimura, MD • Robin B. Mendelsohn, MD •
David B. Purow, MD • Hazar Michael, MD
- 4:50 PM **Closing Remarks**
Arnold J. Markowitz, MD
Robin B. Mendelsohn, MD
- 4:55 PM **Adjournment**

Accreditation

Memorial Sloan Kettering Cancer Center is accredited by the Accreditation Council for Continuing Medical Education to provide continuing medical education for physicians.

AMA CREDIT DESIGNATION STATEMENT

Memorial Sloan Kettering Cancer Center designates this live activity for a maximum of **7.00 AMA PRA Category 1 Credits™**. Physicians should claim only the credit commensurate with the extent of their participation in the activity.

MOC/CC RECOGNITION STATEMENTS

Successful completion of this CME activity, which includes participation in the evaluation component, enables the participant to earn up to:

- 7.00 Medical Knowledge MOC points in the American Board of Internal Medicine's (**ABIM**) Maintenance of Certification (MOC) program; and
- 7.00 Lifelong Learning (CME) credit towards the American Board of Pathology's (**ABPath**) Continuing Certification program; and
- 7.00 CME and Self-Assessment requirements of the American Board of Surgery's (**ABS**) Continuous Certification program.

It is the CME activity provider's responsibility to submit participant completion information to ACCME for the purpose of granting ABIM, ABPath or ABS MOC/CC credit.

ANCC CNE STATEMENT

Memorial Sloan Kettering Cancer Center–Nursing Professional Development / Continuing Education is accredited with distinction as a provider of nursing continuing professional development (NCPD) by the American Nurses Credentialing Center's Commission on Accreditation.

7.25 contact hours will be awarded to participants who attend the program in its entirety and complete a program evaluation.

Partial credit not awarded.



REGISTER ONLINE AT
msk.org/GastroCourse

REGISTRATION FEES

Physicians (MDs, PhDs, and DOs)	\$300
Advanced Practice Providers	\$250
Nursing and Other Healthcare Professionals	\$200
Residents, Fellows, and Students*	\$100
Industry Professionals**	\$525
Registrants Residing and Practicing in Low-and Lower-Middle-Income Countries***	Complimentary
MSK Employees	Complimentary

*The resident, fellow, and student rate is **non-refundable**.

****Industry professionals** may attend MSK CME activities for their own education. Marketing, sales, and promotion of products and services is strictly prohibited at MSK CME activities.

***We are pleased to extend complimentary registration to individuals **residing and practicing in low and lower-middle-income countries**, as defined by **The World Bank**.

MSK Alumni and MSK Cancer Alliance Members: A discounted registration rate is offered to MSK Alumni and MSK Cancer Alliance members for all CME programs at MSK.

Visit the course website for additional information, including our cancellation policy: **msk.org/GastroCourse**



Memorial Sloan Kettering
Cancer Center

Sidney J. Winawer, MD

Lecture



Sidney J. Winawer, MD, former Chief of the Gastroenterology and Nutrition Service at Memorial Sloan Kettering, is an internationally recognized leader in the prevention of digestive cancers.

Widely known as a pioneer in describing the developmental stages of colorectal cancer and promoting the benefits of cancer screening, he has published more than 400 research articles, reviews, and book chapters. Dr. Winawer's research found that removal of premalignant polyps prevents colorectal cancer which led to the concept of screening colonoscopy.

Dr. Winawer is credited with establishing national guidelines for colorectal screening in the United States.



Memorial Sloan Kettering
Cancer Center