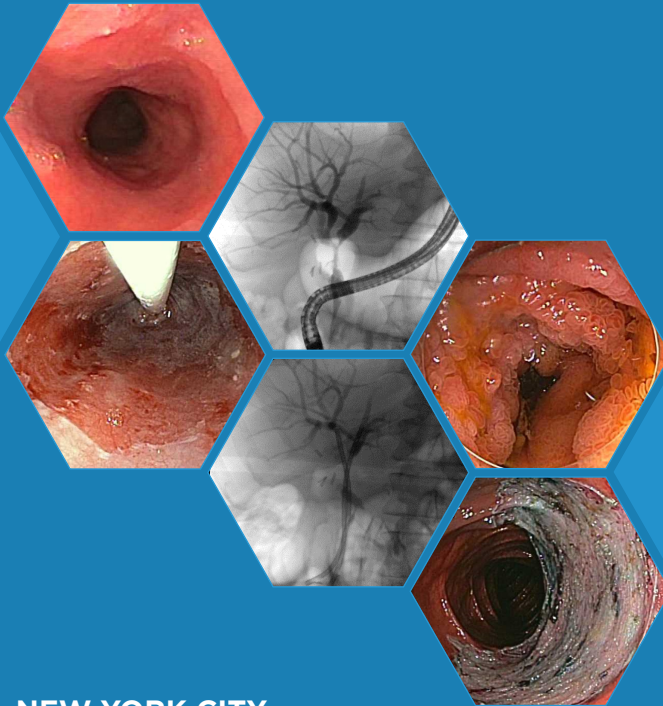


Controversies in Gastrointestinal Premalignant and Malignant Disorders

2020



APRIL 3 • NEW YORK CITY

Zuckerman Research Center
417 East 68th Street

Featuring the 2nd Annual
Sidney J. Winawer, MD Lectureship



Memorial Sloan Kettering
Cancer Center



Overview



Early recognition and management of premalignant gastrointestinal disorders are important in the prevention and early detection of cancer. With advances in our understanding of the pathogenesis and natural history of premalignant and malignant GI disorders, treatment algorithms continue to evolve. Emerging endoscopic techniques also play an important role in the diagnosis and management of these patients.

This one day course will update the participant on current controversies regarding the diagnosis, management and surveillance of GI premalignant and malignant disorders involving the upper and lower GI tracts, liver and pancreaticobiliary tracts.

Topics will include genomics of inherited GI cancers, Barrett's esophagus, gastric intestinal metaplasia, ESD in GI tract, hepatocellular carcinoma, pancreas cyst lesions, malignant hilar biliary obstruction, colorectal cancer screening, fecal immunochemical test (FIT)-DNA stool testing, IBD and dysplasia, chemoprevention for Lynch syndrome and FAP, hereditary gastric cancer, and pancreas cancer screening in high-risk populations. The course will utilize didactic lectures as well as clinical case presentations.

Target Audience

The target audience for this course includes physicians and other healthcare professionals who take care of patients with gastrointestinal, liver and pancreaticobiliary disorders, including gastroenterologists, surgical oncologists, medical oncologists, interventional radiologists, clinical geneticists, fellows, residents, physician assistants, nurse practitioners and registered nurses.

Live Simulcast Available*

Unable to attend this course in person? We are pleased to offer a live simulcast for this course. CME and ABIM MOC credit is offered for the live simulcast and pre-registration is required. We do hope you will attend in person but understand that can sometimes be a challenge, so we are happy to offer the live simulcast as an option.

***The live simulcast is only available to non-MSK attendees. MSK employees are welcome to register to attend this course in person.**

Course details and registration:
mskcc.org/gastrocourse



Learning Objectives

By attending this symposium, attendees will:

- Understand the genomics associated with inherited GI cancers
- Review the diagnosis and management of Barrett's esophagus, including endoscopic therapy for dysplasia
- Become familiar with the diagnosis and management of gastric intestinal metaplasia
- Evaluate the utilization of ESD for the management of GI tract neoplasia and early malignancy
- Become aware of surveillance strategies for hepatocellular carcinoma
- Recognize the diagnosis and surveillance of pancreas cyst lesions
- Discuss the role of endoscopic and interventional radiology management for malignant hilar biliary obstruction
- Examine when to start and stop screening for colorectal cancer
- Determine the follow-up management after a positive fecal immunochemical test (FIT)-DNA stool test and negative colonoscopy
- Review the endoscopic and surgical management options for IBD-associated colorectal dysplasia
- Discuss the role for chemoprevention in Lynch syndrome and FAP
- Evaluate the role of endoscopic surveillance vs surgical management in hereditary gastric cancer
- Examine the role of pancreas cancer screening in high-risk populations

Faculty

Memorial Sloan Kettering Course Directors



Arnold J. Markowitz, MD
Attending Physician
Director, Advanced Endoscopy Fellowship Program
Gastroenterology, Hepatology & Nutrition Service



Robin B. Mendelsohn, MD
Associate Attending Physician
Director, Clinical Nutrition Fellowship Program
Clinical Director, Gastroenterology, Hepatology & Nutrition Service

Invited Course Faculty

B. Joseph Elmunzer, MD, MSc
Peter B. Cotton Professor of Medicine and
Endoscopic Innovation
Division of Gastroenterology & Hepatology
Medical University of South Carolina

Susana Gonzalez, MD
Assistant Professor of Medicine
Division of Gastroenterology & Hepatology
Weill Cornell Medicine
New York Presbyterian Hospital-Cornell

Thomas Imperiale, MD
Professor of Medicine
Division of Gastroenterology & Hepatology
Indiana University

Aimee Lucas, MD, MS
Associate Professor of Medicine
Henry D. Janowitz Division of Gastroenterology
Icahn School of Medicine at Mount Sinai

Patrick Lynch, JD, MD
Professor of Medicine
Department of Gastroenterology, Hepatology & Nutrition
University of Texas MD Anderson Cancer Center

V. Raman Muthusamy, MD, MAS
Professor of Clinical Medicine
Medical Director, Endoscopy
Vatche and Tamar Manoukian Division of Digestive Diseases
David Geffen School of Medicine at UCLA

Memorial Sloan Kettering Course Faculty



Sidney J. Winawer, MD Lecturer
Zsafia K. Stadler, MD
Associate Attending Physician
Clinical Genetics and Gastrointestinal Oncology Services

Delia Calo, MD
Assistant Attending Physician
Associate Director, GI Fellowship Program
Gastroenterology, Hepatology & Nutrition Service

Anne M. Covey, MD
Attending Radiologist
Interventional Radiology Service

David Faleck, MD
Assistant Attending Physician
Gastroenterology, Hepatology & Nutrition Service

Maya Gambarin-Gelwan, MD
Associate Attending Physician
Director, Hepatology
Gastroenterology, Hepatology & Nutrition Service

Hans Gerdes, MD
Attending Physician
Director, GI Endoscopy Unit
Gastroenterology, Hepatology & Nutrition Service

Robert C. Kurtz, MD
Attending Physician
Director, High-Risk Pancreatic Cancer Tumor Registry
Gastroenterology, Hepatology & Nutrition Service

Makoto Nishimura, MD
Associate Attending Physician
Gastroenterology, Hepatology & Nutrition Service

Mark A. Schattner, MD
Attending Physician
Chief, Gastroenterology, Hepatology & Nutrition Service

Pari Shah, MD
Assistant Attending Physician
Director, QA/QI
Gastroenterology, Hepatology & Nutrition Service

Moshe Shike, MD
Attending Physician
Director, Clinical Nutrition
Gastroenterology, Hepatology & Nutrition Service

Kevin C. Soares, MD
Assistant Attending Surgeon
Hepatopancreatobiliary Service

Maria Widmar, MD, MPH
Assistant Attending Surgeon
Colorectal Service

MSK Course Presenters

Jessica Harris, MD
Fellow
Gastroenterology, Hepatology & Nutrition Service

Benjamin Root, MD
Fellow
Gastroenterology, Hepatology & Nutrition Service

Brett Van Leer-Greenberg, MD
Fellow
Gastroenterology, Hepatology & Nutrition Service

Janie Yang, MD
Fellow
Gastroenterology, Hepatology & Nutrition Service

Schedule

FRIDAY, APRIL 3

7:30 AM	Breakfast and Registration
8:00 AM	Welcome and Introduction Arnold J. Markowitz, MD Robin B. Mendelsohn, MD
8:05 AM	Introduction to Sidney J. Winawer Lectureship Mark A. Schattner, MD 2nd Annual Sidney J Winawer, MD Lecture
8:10 AM	Inherited Gastrointestinal Cancer Genomics: Opportunities for Precision, Interception and Prevention Zsafia K. Stadler, MD

SESSION I: Upper GI Tract

MODERATOR: Hans Gerdes, MD

9:10 AM	Barrett's Esophagus - Screen, PPI, Ablate Focal LGD? V. Raman Muthusamy, MD, MAS
9:25 AM	ESD Adaptation and Training in the West Makoto Nishimura, MD Debate Topic: Gastric Intestinal Metaplasia - Surveillance?
9:40 AM	Gastric IM: For Endoscopic Surveillance Susana Gonzalez, MD
9:55 AM	Gastric IM: Against Endoscopic Surveillance Pari Shah, MD
10:10 AM	Case Presentation - UGI Tract Jessica Harris, MD
10:25 AM	Discussion
10:40 AM	Break

SESSION II: Hepatopancreatobiliary

MODERATOR: Mark A. Schattner, MD

11:00 AM	Screening and Surveillance for HCC? Maya Gambarin-Gelwan, MD
11:15 AM	Surveillance for Pancreas Cysts - When to Stop? Kevin C. Soares, MD Debate Topic: Malignant Hilar Biliary Obstruction - Management?
11:30 AM	Biliary Hilar Obstruction: Endoscopic Management B. Joseph Elmunzer, MD, MSc
11:45 AM	Biliary Hilar Obstruction: Percutaneous Management Anne M. Covey, MD
12:00 PM	Case Presentation: Hepatopancreatobiliary Brett Van Leer-Greenberg, MD
12:15 PM	Discussion
12:30 PM	Lunch Break

SESSION III: Lower GI Tract

MODERATOR: Delia Calo, MD

1:30 PM	Screening for Colorectal Cancer - When to Start, When to Stop? Robin B. Mendelsohn, MD
1:45 PM	Positive FIT-DNA Stool Test and Negative Colonoscopy - Enough? Thomas F. Imperiale, MD Debate Topic: IBD and Dysplasia - Management?
2:00 PM	Dysplasia in IBD: Endoscopic Management David Faleck, MD

Registration

Registration Fees	Early*	General
Physicians (MDs, PhDs and DOs)	\$200	\$250
Residents, Fellows, Advanced Practice Providers, Nurses, and Other Healthcare Providers	\$125	\$175
Industry Professionals**	n/a	\$450
Live Simulcast***	n/a	\$450

***Early registration rates expires February 25, 2020.** Apply promotion code **20GASIN** at registration.
 ****Industry professionals may attend MSK CME activities for their own education.** Marketing, sales, and promotion of products and services is strictly prohibited at MSK CME activities.
 *****The live simulcast is only available to non-MSK attendees.** MSK employees are welcome to register to attend this course in person.

Register online at: mskcc.org/gastrocourse

In-person course registration includes continental breakfast, lunch, and refreshment breaks. Please contact cme@mskcc.org at least one week prior to the course if you have any special dietary requests or require any specific accommodations.

- **MSK Alumni, MSK Cancer Alliance and Cancer Care Partner discounts available.** Please contact cme@mskcc.org for more information or a promotion code.
- **MSK employee registration is complimentary.** However, you must complete course registration in order to attend this course.

After your payment has been processed, no further promotional discount adjustments will be made to your registration. Please visit mskcc.org/gastrocourse for additional information and cancellation details.



Course Location

Zuckerman Research Center
 417 East 68th Street
 New York, NY

MSK has negotiated special rates and amenities at select hotels in Manhattan. For details visit: mskcc.org/gastrocourse

Contact

Memorial Sloan Kettering Cancer Center
 Continuing Medical Education
cme@mskcc.org
mskcc.org/cme



**Memorial Sloan Kettering
 Cancer Center**

2:15 PM | Dysplasia in IBD: Surgical Management

Maria Widmar, MD, MPH

2:30 PM | Case Presentation: LGI Tract

Janie Yang, MD

2:45 PM | Discussion

3:00 PM | Break

SESSION IV: High-Risk/Hereditary GI Syndromes

MODERATOR: Moshe Shike, MD

3:20 PM | Lynch Syndrome and FAP – Chemoprevention?

Patrick Lynch, JD, MD

3:35 PM | Hereditary Gastric Cancer – Endoscopic Surveillance vs Surgery?

Arnold J. Markowitz, MD

Debate Topic: High-Risk Pancreas Cancer Populations – Surveillance?

3:50 PM | High-Risk Pancreas Populations: For Surveillance

Aimee Lucas, MD, MS

4:05 PM | High-Risk Pancreas Populations: Against Surveillance

Robert C. Kurtz, MD

4:20 PM | Case Presentation: High-Risk/Hereditary GI Syndromes

Benjamin Root, MD

4:35 PM | Discussion

4:50 PM | Closing Remarks

Arnold J. Markowitz, MD
 Robin B. Mendelsohn, MD

4:55 PM | Course Adjourn

Accreditation

Memorial Sloan Kettering Cancer Center is accredited by the Accreditation Council for Continuing Medical Education to provide continuing medical education for physicians.



AMA Credit Designation Statement

MSK designates this live activity for a maximum of **7.00 AMA PRA Category 1 Credits™**. Physicians should claim only credit commensurate with the extent of their participation in the activity.

ABIM MOC Recognition Statement

Successful completion of this CME activity, which includes participation in the evaluation component, enables the participant to earn up to **7.00 Medical Knowledge MOC points** in the American Board of Internal Medicine's (ABIM) Maintenance of Certification (MOC) program. It is the CME activity provider's responsibility to submit participant completion information to ACCME for the purpose of granting ABIM MOC credit.

Faculty Disclosure

It is the policy of MSK to make every effort to insure balance, independence, objectivity, and scientific rigor in all continuing medical education activities which it provides as an ACCME accredited provider. In accordance with ACCME guidelines and standards, all faculty participating in an activity provided by MSK are expected to disclose any significant financial interest or other relationship with the manufacturer(s) of any commercial product(s) and/or provider(s) of commercial services which are discussed by the faculty members in an educational presentation. As required by the ACCME, when an unlabeled use of a commercial product or an investigational use not yet approved for any purpose is discussed during an educational activity, MSK requires the speaker to disclose that the product is not labeled for the use under discussion or that the product is still investigational.

Controversies in Gastrointestinal Premalignant and Malignant Disorders

2020

mskcc.org/gastrocourse



Memorial Sloan Kettering
Cancer Center