

Celebrating 25 Years of

Innovation in Integrative Oncology

Recent Advances and Future Opportunities

FRIDAY, MAY 17, 2024

Memorial Sloan Kettering Cancer Center
Rockefeller Research Laboratories
New York, NY



Memorial Sloan Kettering
Cancer Center

Welcome

Join leading experts for a one-day conference exploring evidence-based, patient-centered care advancements in integrative oncology.

Our expert speakers will guide participants through effective methods for managing symptoms and side effects associated with cancer treatment, such as pain, anxiety, and fatigue, using integrative strategies including exercise, nutrition, acupuncture, massage, meditation, yoga, and music therapy.

Through a series of engaging lectures and panel discussions, we'll also discuss how to build meaningful collaborations to increase equitable access to these therapies along the patient care journey. This symposium serves as a platform for fostering a comprehensive understanding of integrative medicine, highlighting current achievements, and identifying avenues for growth in delivering holistic and patient-focused care.

Celebratory Networking Reception

As we **commemorate 25 years of advancements in integrative medicine**, we invite attendees to join our distinguished faculty for a celebratory reception at the conclusion of the day, providing an opportunity to foster new connections and cultivate collaborative opportunities. Hors d'oeuvres and refreshments will be served.

Who Should Attend

The symposium is intended for all healthcare providers (physicians, advanced practice providers, nurses, psychologists, social workers, and integrative medicine providers) who diagnose, manage, and treat side effects of cancer treatment along with those who develop programs (administrators) to improve quality of life for people with cancer.

We are pleased to invite a limited number of patients, caregivers, and advocates to attend this symposium on a complimentary basis.

This symposium is set to be an **exclusively in-person event** at Memorial Sloan Kettering's Rockefeller Research Laboratories. A virtual option will not be available.

Learning Objectives

At the conclusion of this symposium, attendees will be able to:

- Highlight advances in patient-centered care in integrative medicine and opportunities for growth
- Improve awareness of evidence-based integrative medicine innovations in symptom management and care delivery
- Develop strategies for improved collaboration and access to integrative therapies across the cancer continuum, from diagnosis through survivorship

Early rates available through April 19, 2024:

msk.org/IntegrativeOncSymposium

Symposium Director



Nirupa Raghunathan, MD, MS

Assistant Attending, Integrative Medicine Service;
Director, Pediatric Integrative Medicine

Symposium Co-Director



Gary Deng, MD, PhD

Attending, Integrative Medicine Service;
Medical Director, Integrative Medicine Service

Symposium Physician Faculty Sponsor



Jun Mao, MD, MSCE

Chief, Integrative Medicine Service;
Laurance S. Rockefeller Chair in Integrative Medicine

MITIGATION OF RELEVANT FINANCIAL RELATIONSHIPS

Memorial Sloan Kettering Cancer Center adheres to the ACCME's Standards for Integrity and Independence in Accredited Continuing Education. Any individuals in a position to control the content of a CE activity, including faculty, planners, reviewers, or others are required to disclose all financial relationships with ineligible companies (commercial interests). All relevant financial relationships have been mitigated prior to the commencement of the activity.

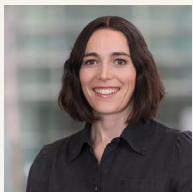
Symposium Planning Committee



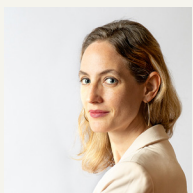
Anthony Bradfield, BA
Education Programs Coordinator,
Integrative Medicine



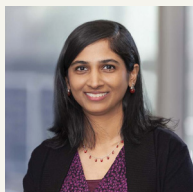
Camila Casaw Irias, MA, LCAT, MT-BC
Research Music Therapist



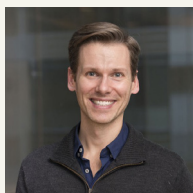
Jessica Scott, PhD
Associate Member, Exercise-Oncology Program



Christina Seluzicki, MBE
Project Manager, Integrative Medicine



Urvi Shah, MD
Assistant Attending, Myeloma Specialist



Billy Rosa, PhD, MBE, APRN, FAANP, FPCN, FAAN
Assistant Attending Behavioral Scientist



Desiree Walker, BA
Patient Advocate and Health Equity Activist

Invited Symposium Faculty

Ting Bao, MD, MS

Co-Director, The Leonard P. Zakim Center for Integrative Therapies
and Healthy Living
Dana-Farber Cancer Institute
Boston, MA

Joke Bradt, PhD, MT-BC

Professor;
Director, PhD Program in Creative Arts Therapies
Drexel University
Philadelphia, PA

M. Beatriz Currier, MD

Medical Director of Cancer Patient Support Center;
Chief of Psychiatric Oncology
Miami Cancer Institute
Miami, FL

Patricia Fahy

NY State Assembly Member
Albany, NY

Heather Greenlee, ND, PhD, MPH

Associate Professor, Cancer Prevention Program,
Public Health Sciences Division;
Associate Professor, Clinical Research Division
Fred Hutchinson Cancer Center
Seattle, WA

Dawn Hershman, MD, MS, FASCO

Witten Family Professor of Medicine;
American Cancer Society Professor of Medicine and Epidemiology;
Interim Chief, Division of Hematology / Oncology;
Deputy Director, Herbert Irving Comprehensive Cancer Center
Columbia University
New York, NY

Wayne Jonas, MD

President, Healing Works Foundation
Alexandria, VA

Richard T. Lee, MD, FASCO

Cherng Family Director's Chair, Center for Integrative Oncology
City of Hope
Duarte, CA

Ana Maria Lopez, MD, MPH, MACP, FRCP (London)

Professor, Medical Oncology and Integrative Medicine (ABOIM) &
Nutritional Sciences, Faculty Fellow of Jefferson Humanities &
Health, Sidney Kimmel Medical College;
Director, Integrative Oncology and Associate Director, Diversity, Equity,
and Inclusion, Sidney Kimmel Cancer Center, NCI Designated;
Senior Advisor, Ambulatory Telehealth for Jefferson Health
Telemedicine Program;
President-Emeritus, American College of Physicians
Thomas Jefferson University
Philadelphia, PA

Alan R. Roth, DO, FAAFP, FAAHPM

Chairman , Department of Family Medicine,
Ambulatory Care and Community Medicine;
Chief, Department of Integrative Pain and Palliative Care Medicine
MediSys Health Network
Flushing Hospital Medical Center
Jamaica Hospital Medical Center
Jamaica, NY

MSK Symposium Faculty

Robert Daly, MD, MBA

Assistant Attending, Thoracic Oncology

Yen-Nien (Jason) Hou, PharmD, RPh, DiplOM, LAc

Herb Information Center Coordinator

Neil Iyengar, MD

Associate Attending, Breast Medicine;
Principal Investigator, Exercise Oncology Program;
Program Lead, MSK Healthy Living;
Associate Professor of Medicine, Weill Cornell Medical College;
Associate Physician, Rockefeller University

Frank Licciardi

Chair Emeritus, Patient & Family Advisory Council for Quality

Kevin Liou, MD

Assistant Attending, Integrative Medicine;
Director, Integrative Medicine Fellowship Program

Daniela Molena, MD

Attending, Thoracic Surgeon;
Director, Esophageal Surgery Program

Charles Rico, ND, LAc

Acupuncturist

Lillian Rodich, MSPAS, PA-C, MPH

Physician Assistant, Integrative Medicine Service

Lingyun Sun, PhD

Visiting Investigator, Integrative Medicine

Selwyn M. Vickers, MD, FACS

President & Chief Executive Officer

MSK Experiential Faculty

Malik Cadwell, MA

Mind-Body Therapist

Shelly Latte-Naor, MD

Assistant Attending, Integrative Medicine;

Director, Mind-Body Medicine

Christine Trastevere, AFAA/NASM

Certified Fitness Instructor




Early rates available through April 19, 2024:
msk.org/IntegrativeOncSymposium

Schedule

Please note that the schedule subject to change.

FRIDAY, MAY 17, 2024
ROCKEFELLER RESEARCH LABORATORIES (RRL)
AUDITORIUM

7:00 AM	Registration and Breakfast RRL LOBBY / ROOM 104
7:55 AM	Welcome and Introduction Nirupa Raghunathan, MD, MS
8:00 AM	WELCOME ADDRESS 25 Years of Integrative Oncology to Support the Mind, Body, and Spirit of People Impacted by Cancer Jun Mao, MD, MSCE Selwyn Vickers, MD, FACS Assembly Member Patricia Fahy
8:15 AM	 KEYNOTE ADDRESS & MEDICINE GRAND ROUNDS Clinical Trials to Inform Evidence-Based Integrative Oncology Dawn Hershman, MD, MS
9:00 AM	Q&A
9:15 AM	Break

AWARENESS

From Evidence to Practice Change: Implementing Integrative Medicine into Standard of Care

MODERATOR: Nirupa Raghunathan, MD, MS

9:30 AM	Mindfulness Experience: Preparing Our Mind and Setting an Intention Shelly Latte-Naor, MD
9:35 AM	SIO-ASCO Clinical Guidelines: Pain, Anxiety, and Depression Heather Greenlee, ND, PhD, MPH
10:00 AM	Exercise Oncology and the Healthy Living Program Neil Iyengar, MD
10:25 AM	Break

COLLABORATION

Virtual Integrative Medicine Programming: Improving the Patient Experience and Health System Outcomes

MODERATOR: Lillian Rodich, PA-C

- 10:40 AM **Fitness Experience: Let's Move Together**
Christine Trastevere
- 10:45 AM **Integrative Medicine at Home:
Challenges Create Opportunities**
Jun Mao, MD, MSCE
- 11:00 AM **Integrative Medicine at Home:
Prehabilitation & Peri-operative Outcomes**
Daniela Molena, MD
- 11:15 AM **Integrative Medicine at Home:
Patient & Hospital Outcomes**
Robert Daly, MD, MBA
- 11:30 AM **PANEL DISCUSSION AND Q&A**
- 12:00 PM Lunch Break
RRL LOBBY / ROOM 104

INNOVATION

Advancing Care Delivery Models and Research

MODERATOR: Frank Licciardi

- 1:00 PM **Patient Perspective**
Frank Licciardi
- 1:05 PM **Innovations in Education and Clinical Implementation
of Herbal Medicine**
Gary Deng, MD, PhD
Jason Hou, PharmD, RPh, DiplOM, LAc
- 1:20 PM **Evidence-Based Diets in Cancer Care**
Urvi Shah, MD
- 1:35 PM **Cannabis for Cancer Therapy Side Effects**
Nirupa Raghunathan, MD, MS
Richard T. Lee, MD, FASCO
- 1:50 PM **Music Therapy for Symptom Management**
Joke Bradt, PhD, MT-BC
- 2:00 PM **Acupuncture & Yoga for Peripheral Neuropathy**
Ting Bao, MD, MS
- 2:20 PM **PANEL DISCUSSION AND Q&A**
- 2:50 PM Break

ACCESS

Ensuring Equitable Access for Diverse Communities

MODERATOR: Desiree Walker

- 3:05 PM

**Tai Chi Experience:
Connecting Mind and Body for Our Communities**
Malik Cadwell, MA
- 3:10 PM

Health Equity and Integrative Oncology
Ana Maria Lopez, MD, MPH
- 3:25 PM

**Outreach Across Communities:
Building Bridges in East Harlem Through Integrative Medicine**
Kevin Liou, MD
Charles Rico, ND, LAc
- 3:40 PM

**Outreach Across Communities:
Collaborating in a Queens, NY Safety-Net Hospital**
Alan R. Roth, DO, FAAFP, FAAHPM
- 3:55 PM

**Outreach Across Communities:
Creative Arts for Symptom Management at
Miami Cancer Institute**
Beatriz Currier, MD
- 4:10 PM

**Integrative Oncology Across the Globe:
A Case Study of Building Culturally Salient Cancer
Survivorship Care in China**
Lingyun Sun, PhD
- 4:25 PM

**Health Policy and Integrative Medicine:
Time for Integration and Access**
Wayne Jonas, MD
- 4:40 PM

PANEL DISCUSSION AND Q&A
- 5:15 PM

**Music Therapy Experience & Closing Remarks:
Building Community and Moving Forward**
Jun Mao, MD, MSCE
Nirupa Raghunathan, MD, MS
Camila Casaw, MA, LCAT, MT-BC

CELEBRATORY NETWORKING RECEPTION

5:30—7:00 PM • RRL ROOM 104

As we commemorate 25 years of advancements in integrative medicine, we invite attendees to join our distinguished faculty for a celebratory reception, providing an opportunity to foster new connections and cultivate collaborative opportunities. Hors d'oeuvres and refreshments will be served.



Accreditation

Memorial Sloan Kettering Cancer Center is accredited by the Accreditation Council for Continuing Medical Education to provide continuing medical education for physicians.

AMA CREDIT DESIGNATION STATEMENT

Memorial Sloan Kettering Cancer Center designates this live activity for a maximum of **7.50 AMA PRA Category 1 Credits™**. Physicians should claim only the credit commensurate with the extent of their participation in the activity.

ABIM MOC RECOGNITION STATEMENT

Successful completion of this CME activity, which includes participation in the evaluation component, enables the participant to earn up to 7.50 Medical Knowledge MOC points in the American Board of Internal Medicine's (ABIM) Maintenance of Certification (MOC) program. It is the CME activity provider's responsibility to submit participant completion information to ACCME for the purpose of granting ABIM MOC credit.

ANCC CNE STATEMENT

Memorial Sloan Kettering Cancer Center—Nursing Professional Development / Continuing Education is accredited with distinction as a provider of nursing continuing

professional development (NCPD) by the American Nurses Credentialing Center's Commission on Accreditation.

7.50 contact hours will be awarded to participants who attend the program in its entirety and complete a program evaluation. **Partial credit not awarded.**

SOCIAL WORK ACCREDITATION STATEMENT*

This presentation is approved for a maximum of **7.50 Continuing Education Contact Hours of Live Training**. Memorial Sloan Kettering Cancer Center is recognized by the New York State Education Department's State Board for Social Work as an approved provider of continuing education for licensed social workers #SW-0228.

CONTINUING EDUCATION FOR LICENSED PSYCHOLOGISTS IN NEW YORK STATE**

This event offers 7.50 NYS Psychology Contact Hours.

Memorial Sloan Kettering Cancer Center is recognized by the New York State Education Department State Board for Psychology as an approved provider of continuing education for licensed psychologists #PSY-0166

*Not all states accept NYS CEUs. Please check with the licensing board in your state for guidance on their acceptance of the credit types offered for this course.

**Not all states accept NYS Psychology Contact Hours. Please check with the licensing board in your state for guidance on their acceptance of the credit types offered for this course

Early rates available through April 19, 2024:

msk.org/IntegrativeOncSymposium

REGISTRATION FEES

Registration Type	Early*	General
Physicians (MDs, PhDs, NDs, and DOs)	\$300	\$350
Advanced Practice Providers and Acupuncturists	\$200	\$250
Social Workers, Integrative Therapists, Nurses, and Other Healthcare Professionals	\$125	\$175
Students and Trainees	\$50	\$100
Employees of Pharma and Medical Devices**	n/a	\$600
Patients, Advocates, and Caregivers	Complimentary	
MSK Employees	Complimentary	

DISCOUNTS & COMPLIMENTARY REGISTRATION

***Early Discounted Rates:** Apply promotion code **IGMDER24** during registration to take advantage of early discounted rates. Offer valid through **April 19, 2024**.

Patients, Advocates, and Caregivers: If you are a patient, advocate, or caregiver interested in attending this symposium on a complimentary basis, please submit a request through the symposium website. **Please note that this complimentary invitation is available for the first 50 registrants.**

MSK Alumni and MSK Cancer Alliance Members: A discounted registration rate is offered to MSK Alumni and MSK Cancer Alliance members for all CME programs at MSK.

****Employees of Pharma and Medical Devices:** Employees who are currently employed by a Pharmaceutical and Medical Device may attend MSK CME activities for their own education. Marketing, sales, and promotion of products and services is strictly prohibited at MSK CME activities.



Memorial Sloan Kettering
Cancer Center