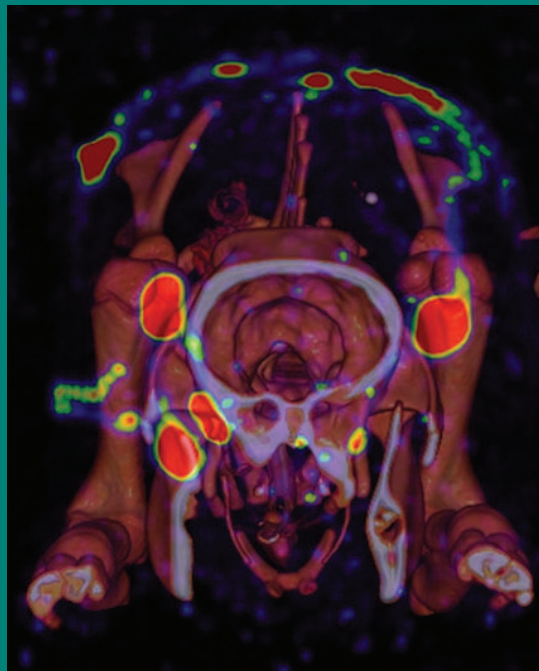
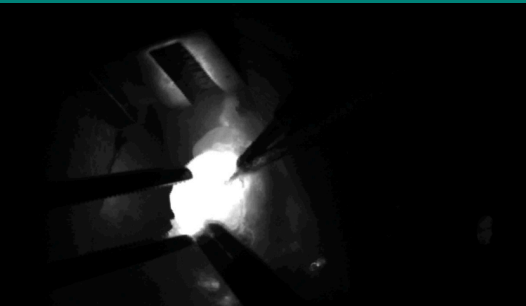
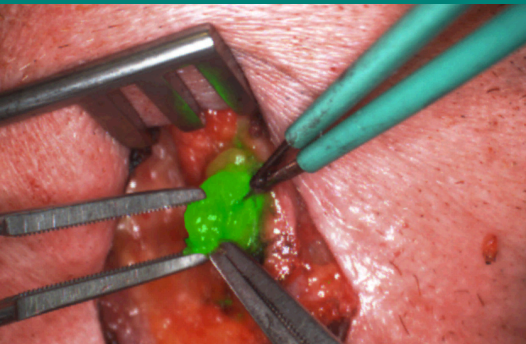


# 2<sup>nd</sup> Annual Intraoperative Imaging Technologies for Cancer Detection & Treatment



New Educational Workshops Included!

**FRIDAY, DECEMBER 8, 2017**

Memorial Sloan Kettering Cancer Center  
Zuckerman Research Center  
417 E 68<sup>th</sup> Street  
New York, NY



Memorial Sloan Kettering  
Cancer Center



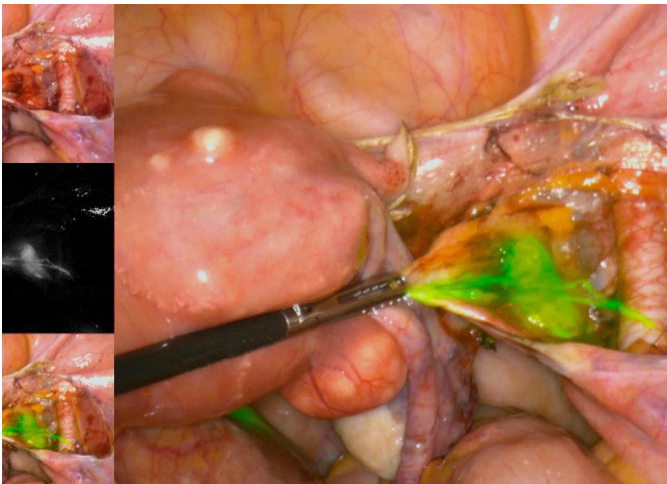
## Course Overview

The overall goal of the course is to update the learner on the progress made in the area of image-guided intraoperative treatment of cancer.

This course is directed towards surgical oncologists, radiologists, pathologists, engineers, research scientists, technologists.

### EDUCATIONAL OBJECTIVES

- Develop familiarity with present and future intraoperative imaging technology advances.
- Enhance understanding of the role of molecular imaging and imaging analysis tools to highlight features of cancerous tissue for guiding biopsy, therapy, or decision-making.
- Facilitate integration of new intraoperative tools into standard surgical practice.



**Image-guided Intraoperative Imaging Technologies** enable surgeons to deliver therapies, confirm procedure status, and modify treatment management during the course of an operation, often enhancing outcomes. At Memorial Sloan Kettering Cancer Center, we use multiple imaging techniques for various types of cancer.

# Course Directors



## **Nadeem R. Abu-Rustum, MD, FACOG, FACS**

Chief, Gynecology Service  
Vice Chair for Technology Development  
Department of Surgery  
Avon Chair in Gynecologic Oncology



## **Michelle S. Bradbury, MD, PhD**

Director, Intraoperative Imaging  
Co-Chair, Innovation & Technology Team  
Co-Director, MSK-Cornell Center for Translation  
of Cancer Nanomedicines  
Member, Molecular Pharmacology Program  
Professor of Radiology, Gerstner Sloan Kettering Graduate  
School & Weill Medical College of Cornell University

## MSK FACULTY

### **Jeffrey Drebin, MD, PhD**

Chair, Department of Surgery

### **Hedvig Hricak, MD, PhD, Dr (hc)**

Chair, Department of Radiology  
Carroll and Milton Petrie Chair

### **Stephen Solomon, MD**

Chief, Interventional Radiology Service

### **Krishna Juluru, MD**

Associate Attending Radiologist  
Director of Imaging Informatics,  
Department of Radiology

### **Jan Grimm, MD, PhD**

Associate Member  
Molecular Pharmacology Program  
Associate Attending  
Department of Radiology

### **Moritz Kircher, MD, PhD**

Member, Molecular Pharmacology Program  
Associate Attending,  
Department of Radiology

### **Thomas Reiner, PhD**

Assistant Attending  
Department of Radiology

### **Amber Simpson, PhD**

Assistant Attending  
Department of Surgery

### **Pat Zanzonico, PhD, DABR**

Member and Attending Physicist  
Co-Head, Small-Animal Imaging Core Facility

## VISITING FACULTY

### **Christina Liu, PhD, PE**

Program Director, NCI Office of Cancer  
Nanotechnology Research

### **Keyvan Farahani, PhD**

Program Director, Imaging  
Guided Intervention Branch,  
Cancer Imaging Program,  
National Cancer Institute

### **Matthew Bogyo, PhD**

Professor, Department of Pathology,  
Stanford University School of Medicine

### **James Basilion, PhD**

Professor of Radiology, Biomedical  
Engineering, and Pathology  
Case Western Reserve University  
Case Center for Imaging Research  
Department of Radiology

### **Eben Rosenthal, MD**

Co-Founder, International Society of Image  
Guided Surgery; Professor of Otolaryngology  
and Radiology, Ann & John Doerr Medical  
Director, Stanford Cancer Center

# Scientific Agenda

8:00 AM **BREAKFAST & REGISTRATION**

9:00 AM **Opening Remarks**

Hedvig Hricak, MD, PhD, Dr (hc)  
Jeffrey Drebin, MD, PhD  
Pat Zanzonico, PhD, DABR

9:15 AM **Cancer Nanotechnology/Imaging Program**

Christina Liu, PhD, PE

9:30 AM **Keynote Address**

James P. Babilion, PhD

9:50 AM **Leveraging Light in the  
Operating Room: Advances  
in Surgical Imaging**

Eben Rosenthal, MD

10:10 AM **Image Guided Surgical Treatment of  
Nodal Disease and Nerve Mapping Using  
Clinically Translated Silica Nanoparticles**

Michelle Bradbury, MD, PhD

10:30 AM **Fluorescent Probes for Imaging Tumor  
Margins: Recent Progress and Future  
Direction**

Matthew S. Bogoyo, PhD

10:50 AM **Q&A Session**

11:10 AM **BREAK**

11:30 AM **Advances and Opportunities in  
Image-Guided Interventions**

Keyvan Farahani, PhD

11:50 AM **Gynecologic Surgery: Beyond White  
Light and the Naked Eye**

Nadeem Abu-Rustum, MD, FACOG, FACS

12:10 PM **Radiomics of  
Gastrointestinal Cancers**

Amber Simpson, PhD

12:30 PM

## Educational Workshop Lunch

Participants are able to attend the session of their choice and are free to move between sessions throughout lunch.

### SESSION A:

#### Multi-Spectral Optoacoustic Tomography

(Zuckerman Room 136)

##### MODERATOR:

Moritz Kircher, MD, PhD

Attendees will be introduced to the next generation in molecular imaging through Multispectral Optoacoustic Tomography (MSOT) technology, and will learn how MSOT combines the molecular specificity of optical imaging with the penetration depth and spatiotemporal resolution of ultrasound.

### SESSION B:

#### Fluorescent Image Guided Surgery

(Zuckerman Room 105)

##### MODERATOR:

Michelle S. Bradbury, MD, PhD

Participants will experience a valuable platform in precision surgery and diagnosis, and engage in real time simultaneous capturing of color image and two different fluorescent channel images for laparoscopic and open procedures.

2:00 PM

## Applications of Intraoperative Advanced Visualization and 3D Printing

Krishna Juluru, MD

2:20 PM

## Imaging with Ultrafast Particles

Jan Grimm, MD, PhD

2:40 PM

## Intraoperative Imaging of PARP1 in Oral Cancer

Thomas Reiner, PhD

3:00 PM

## Raman Nanoparticles for High Precision Cancer Imaging and Theranostic

Moritz Kircher, MD, PhD

3:20 PM

## Molecular Imaging Guided Interventions

Stephen Solomon, MD

3:40 PM

## Panel Discussion

##### MODERATORS:

Christina Liu, PhD, PE  
Program Director, NCI Office of  
Cancer Nanotechnology Research

Keyvan Farahani, PhD  
Program Director, Imaging  
Guided Intervention Branch,  
Cancer Imaging Program,  
National Cancer Institute

##### PANELISTS:

James Basilion, PhD  
Krishna Juluru, MD  
Eben Rosenthal, MD  
Stephen Solomon, MD  
Pat Zanzonico, PhD, DABR

4:30 PM

## SYMPOSIUM ADJOURN

# Registration

	EARLY*	GENERAL
Physicians (MDs, PhDs and DOs)	\$300	\$350
Residents, Fellows, Nurses and Other Healthcare Providers	\$100	\$150
Industry Professionals*	\$800	\$800

\*Early Registration Deadline: 10/8/17

## REGISTER ONLINE:

[www.mskcc.org/IntraoperativeCourse](http://www.mskcc.org/IntraoperativeCourse)

## REGISTRATION DETAILS

Registration includes continental breakfast, lunch, and refreshment breaks. Please contact us at least one week prior to the course if you have any special dietary needs.

- **30% Discounted Rate for MSK Alumni and MSK Alliance Members**  
MSK offers a 30% discounted rate to all MSK Alumni and MSK Alliance members to attend a CME course. Please contact [cme@mskcc.org](mailto:cme@mskcc.org) for a promo code or more information.
- **MSK Staff Registration**  
Registration is complimentary for MSK staff who wish to attend this course. However, you must register online by visiting the course website, [www.mskcc.org/IntraoperativeCourse](http://www.mskcc.org/IntraoperativeCourse).

## \*Industry Professionals

Registration is for educational purposes only. Marketing, sales, and promotion of products and services are prohibited at CME activities.

## ACCREDITATION STATEMENT

MSK is accredited by the Accreditation Council for Continuing Medical Education (ACCME) to provide continuing medical education for physicians.



## AMA CREDIT DESIGNATION STATEMENT

MSK designates this live activity for a maximum of **7.25 AMA PRA Category 1 Credit(s)**<sup>™</sup>. Physicians should only claim credit commensurate with the extent of their participation in the activity.

## FACULTY DISCLOSURE

It is the policy of MSK to make every effort to insure balance, independence, objectivity, and scientific rigor in all continuing medical education activities which it provides as an ACCME accredited provider. In accordance with ACCME guidelines and standards, all faculty participating in an activity provided by MSK are expected to disclose any significant financial interest or other relationship with the manufacturer(s) of any commercial product(s) and/or provider(s) of commercial services which are discussed by the faculty members in an educational presentation. As required by the ACCME, when an unlabeled use of a commercial product or an investigational use not yet approved for any purpose is discussed during an educational activity, MSK requires the speaker to disclose that the product is not labeled for the use under discussion or that the product is still investigational.

## ACCOMMODATIONS

For information on hotels in the area of MSK with discounted rates, please visit: [www.mskcc.org/cme](http://www.mskcc.org/cme).

CONTINUING MEDICAL EDUCATION  
MEMORIAL SLOAN KETTERING CANCER CENTER  
633 Third Avenue, 12th Floor, New York, NY 10017  
w: [www.mskcc.org/cme](http://www.mskcc.org/cme) | e: [cme@mskcc.org](mailto:cme@mskcc.org)