

A scanning electron micrograph (SEM) showing the surface of lymphoma cells. The cells are covered in a dense network of fine, hair-like filaments and larger, rounded protrusions, giving them a complex, textured appearance. The color palette is primarily green and brown, with some darker areas in the shadows.

MSK CME  
**ON DEMAND**

5<sup>TH</sup> ANNUAL  
MSK SYMPOSIUM ON  
**LYMPHOMA**

*Featuring Updated Information on  
Current and Future Therapies  
for Lymphoma*



Memorial Sloan Kettering  
Cancer Center



# OVERVIEW

Recorded live on May 14-15, 2021, this on demand program features updated information on lymphoma biology, diagnosis, and ongoing efforts to translate the scientific discoveries into novel treatment strategies for a variety of lymphoma subtypes.

Highlights of this on demand program include:

- A focus on the recent treatment options developed for patients with relapsed or refractory disease as well as discussions on how to best approach patients' situation.
- A special session on recent advances in the biology of lymphoma and how this will translate to innovative therapeutic interventions.
- Discussions on diagnostic and management cases, and how to incorporate biomarkers and imaging into clinical practice and clinical trials.

The target audience for this activity includes medical and radiation oncologists, hematopathologists, scientists, and medical trainees involved in diagnosis, treatment, and biomedical research of lymphoma.

## MSK COURSE DIRECTOR



**Gilles Salles, MD, PhD**  
Chief, Lymphoma Service



## MSK PLANNING COMMITTEE



**Ahmet Dogan, MD, PhD**  
Chief, Hematopathology Service  
Departments of Pathology and  
Laboratory Medicine



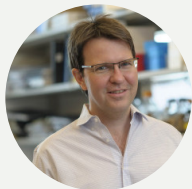
**Steven Horwitz, MD**  
Medical Oncologist



**Andrew Intlekofer, MD**  
Assistant Member,  
Human Oncology & Pathogenesis Program



**Ariela Noy, MD**  
Medical Oncologist



**Hans-Guido Wendel, MD**  
Member/Professor,  
Cancer Biology & Genetics Program



**Joachim Yahalom, MD**  
Radiation Oncologist



**Andrew D. Zelenetz, MD, PhD**  
Medical Director, Quality Informatics

# FACULTY

## KEYNOTE SPEAKERS



### **Michel Sadelain, MD, PhD**

Director, Center for Cell Engineering;  
Stephen and Barbara Friedman Chair  
Memorial Sloan Kettering Cancer Center  
New York, NY



### **David Weinstock, MD**

Lavine Family Chair for  
Preventative Cancer Therapies  
Dana-Farber Cancer Institute  
Boston, MA

## INVITED COURSE FACULTY

### **Philippe Armand, MD, PhD**

Chief, Division of Lymphoma  
Dana-Farber Cancer Institute  
Boston, MA

### **Martin Dreyling, MD, PhD**

Professor of Medicine  
University of Munich  
Munich, Germany

### **Gregor S. Nowakowski, MD**

Consultant, Division of Hematology  
Department of Internal Medicine  
Mayo Clinic  
Rochester, Minnesota

### **Simon Rule, MD, PhD**

Professor in Haematology  
Plymouth University Medical School  
Plymouth, UK

## MSK COURSE FACULTY

### **Caleb Ho, MD**

Pathologist

### **Anita Kumar, MD**

Regional Care Network  
Medical Site Director,  
MSK Basking Ridge

### **Alison Moskowitz, MD**

Clinical Director,  
Lymphoma Inpatient Unit

### **M. Lia Palomba, MD**

Medical Oncologist

### **Craig Sauter, MD**

Clinical Director,  
Adult Bone Marrow Transplant Service

### **Heiko Schoder, MD, MBA**

Chief, Molecular Imaging and Therapy Service

## Hodgkin Lymphoma (HL)

CHAIR: **Steven Horwitz, MD**

---

- 15 MIN. **PET-CT in HL: Recent Insights**  
Heiko Schoder, MD, MBA
- 15 MIN. **Can ASCT be Avoided in Relapsed HL**  
Alison Moskowitz, MD
- 15 MIN. **ASCT & Cellular Therapies in HL**  
Philippe Armand, MD, PhD
- 10 MIN. **Panel Discussion: Q&A**

### Keynote Presentation

MODERATOR: **Steven Horwitz, MD**

- 35 MIN. **New Vulnerabilities in T-cell Lymphomas**  
David Weinstock, MD

## Diffuse Large B-cell Lymphoma (DLBCL)

CHAIR: **Ariela Noy, MD**

---

- 10 MIN. **DLBCL Pathology: New Insights**  
Ahmet Dogan, MD, PhD
- 20 MIN. **Positioning CAR-T in Relapsed / Refractory DLBCL**  
Craig Sauter, MD
- 20 MIN. **Effective and Off the Shelf -  
New Agents in Relapsed and Refractory DLBCL**  
Gregor Nowakowski, MD
- 15 MIN. **Panel Discussion: Q&A**

## Mantle Cell Lymphoma

CHAIR: **Anita Kumar, MD**

---

- 10 MIN. **MCL Pathology: New Insights**  
Caleb Ho, MD
- 15 MIN. **Targeted Therapies in MCL**  
Simon Rule, MD, PhD
- 15 MIN. **CAR-T in R/R MCL**  
M. Lia Palomba, MD
- 15 MIN. **Panel Discussion: Q&A**

## Follicular Lymphoma (FL)

CHAIR: **Andrew D. Zelenetz, MD, PhD**

---

- 15 MIN. **Less is More: New RT Paradigm for Indolent Lymphomas**  
Joachim Yahalom, MD
- 15 MIN. **Managing Early Relapses in FL: The Role of Chemotherapy**  
Martin Dreyling, MD, PhD
- 15 MIN. **Management of Early Relapses: New Agents**  
Gilles Salles, MD, PhD
- 15 MIN. **Panel Discussion: Q&A**

### Keynote Presentation

MODERATOR: **Gilles Salles, MD, PhD**

- 35 MIN. **Lessons from CD19 CAR Therapy**  
Michel Sadelain, MD, PhD

# REGISTER ONLINE:

## [mskcc.org/lymphomasymposiumonline](https://mskcc.org/lymphomasymposiumonline)

### On Demand Registration Fees

---

Physicians (MDs, PhDs and DOs): **\$200**

---

Nurses, PAs and Other Healthcare Professionals: **\$50**

---

Residents and Fellows: **\$50**

---

Industry Professionals: **\$500**

---

By registering for this on demand program, you will receive access to videos from the *5<sup>th</sup> Annual MSK Symposium on Lymphoma*, originally recorded on May 14-15, 2021. This on demand program will be available for purchase until November 30, 2021. Access to the videos and claiming credit will be available until February 28, 2021.

### Registration Discounts/Promotions

- MSK CME offers a discounted rate for MSK Alumni, MSK Cancer Alliance and Cancer Care Partners.
- MSK employee registration is complimentary; however, you must complete course registration in order to attend this course.

For additional details on registration, please visit the course website:

**[mskcc.org/lymphomasymposiumonline](https://mskcc.org/lymphomasymposiumonline)**

## ACCREDITATION

Memorial Sloan Kettering Cancer Center is accredited by the Accreditation Council for Continuing Medical Education to provide continuing medical education for physicians.

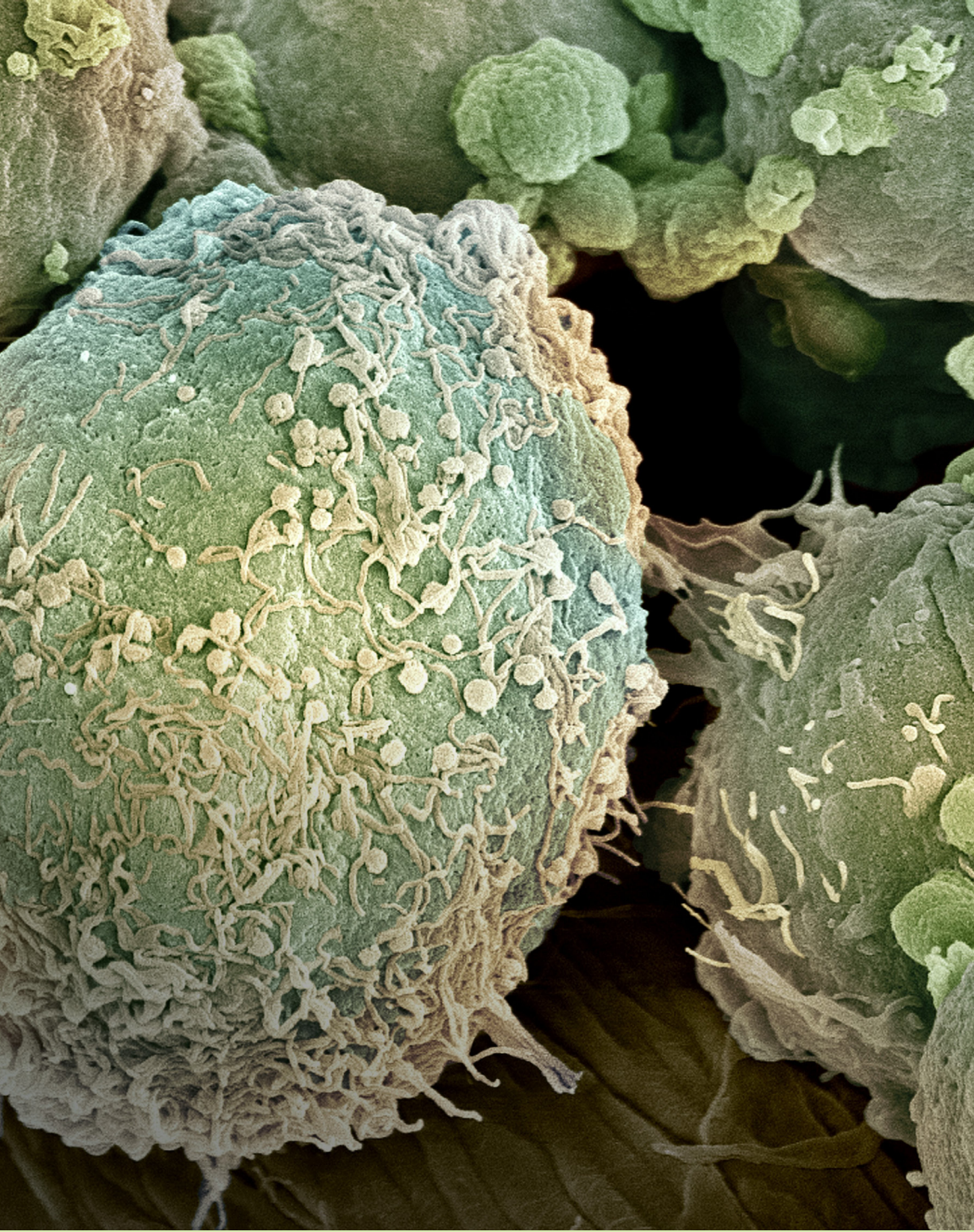
### AMA Credit Designation Statement

Memorial Sloan Kettering Cancer Center designates this live activity for a maximum of **5.00 AMA PRA Category 1 Credits™**. Physicians should claim only the credit commensurate with the extent of their participation in the activity.

### Faculty Disclosure

It is the policy of MSK to make every effort to insure balance, independence, objectivity, and scientific rigor in all continuing medical education activities which it provides as an ACCME accredited provider. In accordance with ACCME guidelines and standards, all faculty participating in an activity provided by MSK are expected to disclose any significant financial interest or other relationship with the manufacturer(s) of any commercial product(s) and/or provider(s) of commercial services which are discussed by the faculty members in an educational presentation. As required by the ACCME, when an unlabeled use of a commercial product or an investigational use not yet approved for any purpose is discussed during an educational activity, MSK requires the speaker to disclose that the product is not labeled for the use under discussion or that the product is still investigational.





Memorial Sloan Kettering  
Cancer Center