A scanning electron micrograph (SEM) showing a dense network of green, textured cells with numerous fine, hair-like projections extending from their surfaces. The cells are interconnected, forming a complex, porous structure. The lighting highlights the intricate details of the cell membranes and the branching nature of the projections.

5TH ANNUAL MSK SYMPOSIUM ON LYMPHOMA

LIVE VIRTUAL • MAY 14-15, 2021

Friday, May 14 • 9:45 AM-1:00 PM (US Eastern Time)

Saturday, May 15 • 8:45 AM-12:40 PM (US Eastern Time)

*Featuring Updated Information on
Current and Future Therapies
for Lymphoma*



Memorial Sloan Kettering
Cancer Center

Welcome

It is my privilege and pleasure to welcome you to the *5th Annual MSK Symposium on Lymphoma*, which will be held this year in a new virtual format. While we couldn't meet last year as initially planned, pursuing this educational and scientific event was one of my top priorities when I joined MSK last summer.

This new edition, condensed over two half-days, will feature exciting sessions devoted to the rapidly emerging treatments in lymphoma. An outstanding faculty panel will address different facets of those, from new biological pathways promising for future therapeutic developments to lymphoma subtypes dedicated sessions, where panelists will discuss the optimal sequencing of drugs having been recently made available for our patients. Additionally, there will be two keynote lectures where challenges respectively relevant to T-cell lymphoma and cellular therapy will be discussed.

We look forward to connecting virtually with you this year on May 14-15, 2021 and hope to welcome you in person at MSK in the future!

Dr. Gilles Salles
Chief, Lymphoma Service
Memorial Sloan Kettering Cancer Center



OVERVIEW

This symposium will feature updated information on lymphoma biology, diagnosis, and ongoing efforts to translate the scientific discoveries into novel treatment strategies for a variety of lymphoma subtypes. **This year, we will have a particular focus on the recent treatment options developed for patients with relapsed or refractory disease.** Faculty will present those and then discuss during a panel how to best approach patients' situation. We will also cover in a special session recent advances in the biology of lymphoma and how this will translate to innovative therapeutic interventions. Participants will have the opportunity to discuss diagnostic and management cases, and how to incorporate biomarkers and imaging into clinical practice and clinical trials.

WHO SHOULD ATTEND

The target audience for this symposium includes medical and radiation oncologists, hematopathologists, scientists, and medical trainees involved in diagnosis, treatment, and biomedical research of lymphoma.

MSK COURSE DIRECTOR



Gilles Salles, MD, PhD
Chief, Lymphoma Service

MSK PLANNING COMMITTEE



Ahmet Dogan, MD, PhD
Chief, Hematopathology Service
Departments of Pathology and
Laboratory Medicine



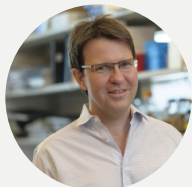
Steven Horwitz, MD
Medical Oncologist



Andrew Intlekofer, MD
Assistant Member,
Human Oncology & Pathogenesis Program



Ariela Noy, MD
Medical Oncologist



Hans-Guido Wendel, MD
Member/Professor,
Cancer Biology & Genetics Program



Joachim Yahalom, MD
Radiation Oncologist



Andrew D. Zelenetz, MD, PhD
Medical Director, Quality Informatics

FACULTY

KEYNOTE SPEAKERS



Michel Sadelain, MD, PhD

Director, Center for Cell Engineering;
Stephen and Barbara Friedman Chair
Memorial Sloan Kettering Cancer Center
New York, NY



David Weinstock, MD

Lavine Family Chair for
Preventative Cancer Therapies
Dana-Farber Cancer Institute
Boston, MA

INVITED COURSE FACULTY

Philippe Armand, MD, PhD

Chief, Division of Lymphoma
Dana-Farber Cancer Institute
Boston, MA

Kivanç Birsoy, PhD

Chapman Perelman Assistant Professor
Rockefeller University
New York, NY

Martin Dreyling, MD, PhD

Professor of Medicine
University of Munich
Munich, Germany

Markus Müschen, MD, PhD

Arthur H. and Isabel Bunker
Professor of Medicine (Hematology)
Director, Center of Molecular and
Cellular Oncology
Yale School of Medicine
New Haven, CT

Gregor S. Nowakowski, MD

Consultant, Division of Hematology
Department of Internal Medicine
Mayo Clinic
Rochester, Minnesota

Simon Rule, MD, PhD

Professor in Haematology
Plymouth University Medical School
Plymouth, UK

MSK COURSE FACULTY

Caleb Ho, MD

Pathologist

Anita Kumar, MD

Regional Care Network
Medical Site Director,
MSK Basking Ridge

Alison Moskowitz, MD

Clinical Director,
Lymphoma Inpatient Unit

M. Lia Palomba, MD

Medical Oncologist

Craig Sauter, MD

Clinical Director,
Adult Bone Marrow Transplant Service

Heiko Schoder, MD, MBA

Chief, Molecular Imaging and Therapy Service



Friday, May 14, 2021
9:45 AM-1:00 PM (US Eastern Time)

- 9:45 AM Virtual Course Check-in
10:00 AM **Welcoming Remarks**
Gilles Salles, MD, PhD

Starving Lymphoma Cells

CHAIR: **Hans-Guido Wendel, MD**

- 10:05 AM **Metabolic and Epigenetic Cooperativity in T Cell Lymphoma**
Andrew Intlekofer, MD, PhD
10:20 AM **Understanding the Role of Oxidative Metabolism in Blood Cancers**
Kivanç Birsoy, PhD
10:35 AM **Connecting the Dots: The Link Between Serine Metabolism and Lymphoma Epigenetics**
Hans-Guido Wendel, MD
10:55 AM **Mechanisms of B-cell Selection as Therapeutic Targets in Pre-GC Lymphomas**
Markus Müschen, MD, PhD
11:10 AM **Panel Discussion: Q&A**
11:25 AM Break

Hodgkin Lymphoma (HL)

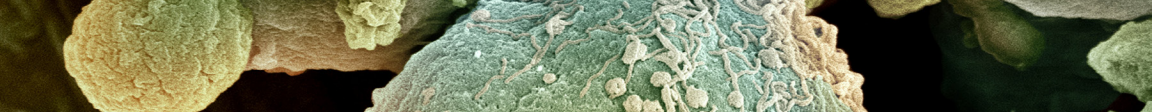
CHAIR: **Steven Horwitz, MD**

- 11:30 AM **PET-CT in HL: Recent Insights**
Heiko Schoder, MD, MBA
11:45 AM **Can ASCT be Avoided in Relapsed HL**
Alison Moskowitz, MD
12:00 PM **ASCT & Cellular Therapies in HL**
Philippe Armand, MD, PhD
12:15 PM **Panel Discussion: Q&A**

Keynote Presentation

MODERATOR: **Steven Horwitz, MD**

- 12:25 PM **New Vulnerabilities in T-cell Lymphomas**
David Weinstock, MD
12:55 PM **Discussion: Q&A**
1:00 PM **Closing and Adjourn**
Gilles Salles, MD, PhD



Saturday, May 15, 2021
8:45 AM-12:40 PM (US Eastern Time)

8:45 AM Virtual Course Check-in

Diffuse Large B-cell Lymphoma (DLBCL)

CHAIR: **Ariela Noy, MD**

-
- 9:00 AM **DLBCL Pathology: New Insights**
Ahmet Dogan, MD, PhD
- 9:10 AM **Positioning CAR-T in Relapsed / Refractory DLBCL**
Craig Sauter, MD
- 9:30 AM **Effective and Off the Shelf -
New Agents in Relapsed and Refractory DLBCL**
Gregor Nowakowski, MD
- 9:50 AM **Panel Discussion: Q&A**

Mantle Cell Lymphoma

CHAIR: **Anita Kumar, MD**

-
- 10:05 AM **MCL Pathology: New Insights**
Caleb Ho, MD
- 10:15 AM **Targeted Therapies in MCL**
Simon Rule, MD, PhD
- 10:30 AM **CAR-T in R/R MCL**
M. Lia Palomba, MD
- 10:45 AM **Panel Discussion: Q&A**
- 11:00 AM Break

Follicular Lymphoma (FL)

CHAIR: **Andrew D. Zelenetz, MD, PhD**

-
- 11:05 AM **Less is More: New RT Paradigm for Indolent Lymphomas**
Joachim Yahalom, MD
- 11:20 AM **Managing Early Relapses in FL: The Role of Chemotherapy**
Martin Dreyling, MD, PhD
- 11:35 AM **Management of Early Relapses: New Agents**
Gilles Salles, MD, PhD
- 11:50 AM **Panel Discussion: Q&A**

Keynote Presentation

MODERATOR: **Gilles Salles, MD, PhD**

- 12:05 PM **Lessons from CD19 CAR Therapy**
Michel Sadelain, MD, PhD
- 12:35 PM **Discussion: Q&A**
-
- 12:40 PM **Closing and Adjourn**
Gilles Salles, MD, PhD

REGISTER ONLINE: mskcc.org/lymphomasymposium

Live Virtual Registration Fees

Physicians (MDs, PhDs and DOs): **\$200**

Nurses, PAs and Other Healthcare Professionals: **\$50**

Residents and Fellows: **\$50**

Industry Professionals*: **\$350**

*Industry professionals may attend MSK CME activities for their own education. Marketing, sales, and promotion of products and services is strictly prohibited at MSK CME activities.

Registration Discounts/Promotions

- MSK CME offers a discounted rate for MSK Alumni, MSK Cancer Alliance and Cancer Care Partners.
- MSK employee registration is complimentary; however, you must complete course registration in order to attend this course.

For additional details on registration, including the MSK CME cancellation policy, please visit the course website: mskcc.org/lymphomasymposium

This live virtual program will be delivered using Zoom. Detailed access and credit instructions will be emailed to attendees prior to the start of the course.

ACCREDITATION

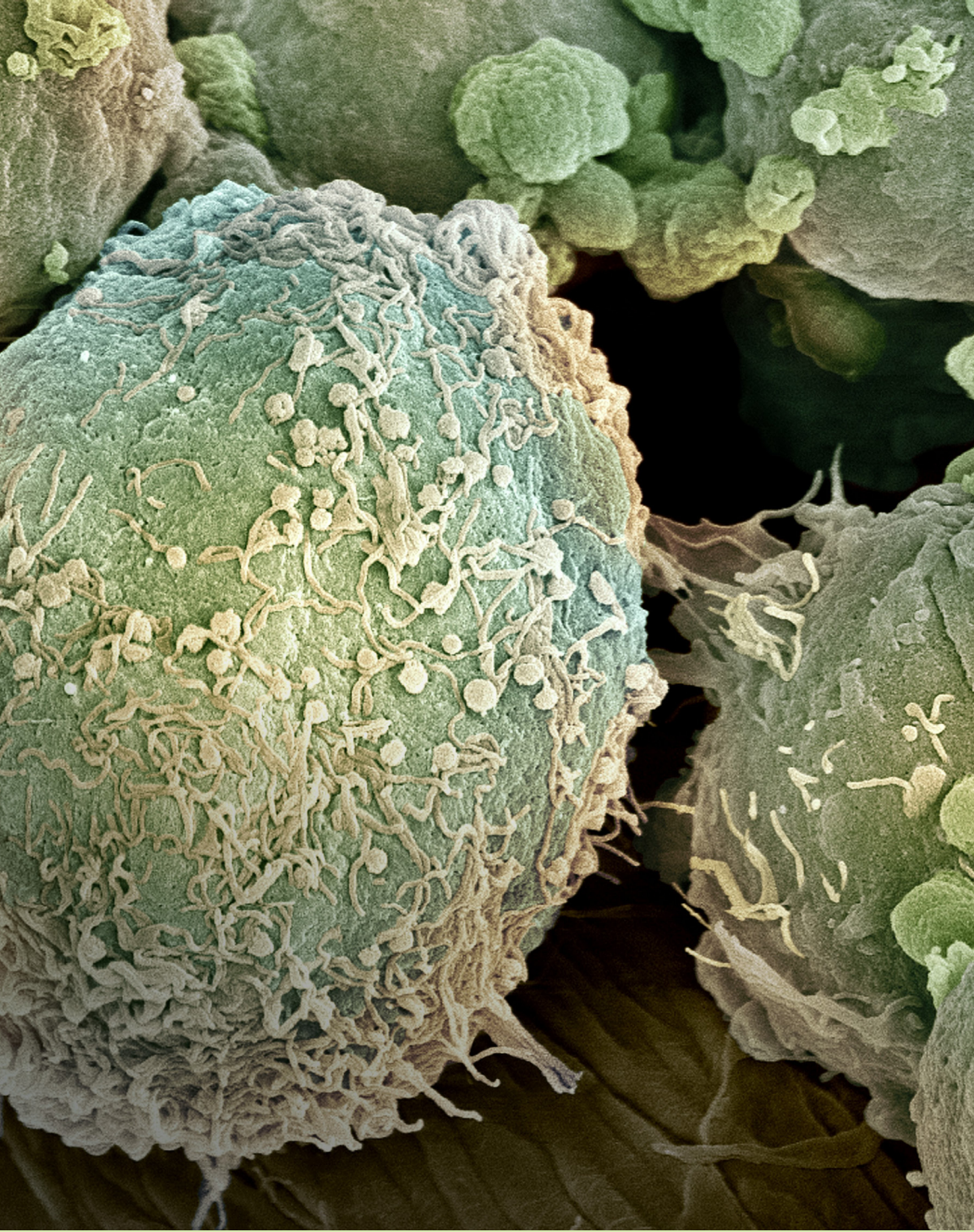
Memorial Sloan Kettering Cancer Center is accredited by the Accreditation Council for Continuing Medical Education to provide continuing medical education for physicians.

AMA Credit Designation Statement

Memorial Sloan Kettering Cancer Center designates this live activity for a maximum of **6.50 AMA PRA Category 1 Credits™**. Physicians should claim only the credit commensurate with the extent of their participation in the activity.

Faculty Disclosure

It is the policy of MSK to make every effort to insure balance, independence, objectivity, and scientific rigor in all continuing medical education activities which it provides as an ACCME accredited provider. In accordance with ACCME guidelines and standards, all faculty participating in an activity provided by MSK are expected to disclose any significant financial interest or other relationship with the manufacturer(s) of any commercial product(s) and/or provider(s) of commercial services which are discussed by the faculty members in an educational presentation. As required by the ACCME, when an unlabeled use of a commercial product or an investigational use not yet approved for any purpose is discussed during an educational activity, MSK requires the speaker to disclose that the product is not labeled for the use under discussion or that the product is still investigational.



Memorial Sloan Kettering
Cancer Center