

9th Annual MSK Symposium on Lymphoma

2025 | April 25–26
Join Us In-Person or Virtually

Zuckerman Research Center | New York City
Special In-Person-Only Sessions
Early Rates Available Until February 28



CME MOC



Memorial Sloan Kettering
Cancer Center

Overview

This annual symposium provides a comprehensive overview of the latest advancements in the evolving field of lymphoma.

Renowned national and international experts present cutting-edge discoveries in lymphoma biology, state-of-the-art diagnostic techniques, and innovative treatment strategies.

The program highlights the clinical management of common lymphoma subtypes while also examining groundbreaking drug developments that are redefining patient care. Attendees will gain valuable insights into the latest findings in lymphoma biology and pathology, exploring how these breakthroughs are being translated into practical, impactful solutions for clinical practice.

Spanning a day and a half, this year's program features:

- **Keynote Lectures:** Featuring renowned leaders in lymphoma research and care.
- **Interactive Panel Discussions:** Practical discussions on innovative approaches to advancing patient outcomes.
- **Empowering APPs and Nurses— Professional Development Breakout Session*:** Tailored content for interprofessional teams, emphasizing their pivotal role in advancing lymphoma treatment.
- **Networking Opportunities*:** Connect with colleagues and faculty during breaks as well as a dedicated Welcome Reception on Friday evening and a Farewell Lunch Reception on Saturday afternoon.

*Available for in-person attendees only.

Register by February 28 for early rates:

msk.org/LymphomaSymposium

AUDIENCE

The target audience includes internists, oncologists, hematologists as well as medical and radiation oncologists, hematopathologists, scientists, and medical trainees involved in the diagnosis, treatment, and biomedical research of lymphoma.



Participants are invited to join us either in person or virtually.

Zuckerman Research Center
417 East 68th Street
New York, NY

SYLLABUS

Attendees will gain access to an online syllabus following the symposium, which will include select PDFs of faculty presentations (slides) and recorded videos. Please note, if you're unable to attend the Nursing and APP Breakout Session in person, it will be recorded and made available through the syllabus.

OBJECTIVES

At the conclusion of this symposium, attendees will be able to:

- Describe recent advances in lymphoma classification
- Discuss first line treatment options in most frequent lymphoma entities
- Describe new agents mode of actions, efficacy, and side effects
- Discuss options and recommendations for patients in the relapse refractory setting
- Provide adequate information to help shared decision with patients regarding their treatment

Register by February 28 for early rates:

msk.org/LymphomaSymposium

MSK DIRECTOR



Gilles Salles, MD, PhD
Chief, Lymphoma Service

MSK PLANNING COMMITTEE



Ahmet Dogan, MD, PhD
Chief, Hematopathology Service



Lauren Drosick, PA-C
Advanced Practice Provider



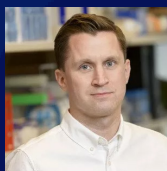
Kojo S.J. Elenitoba-Johnson, MD
Chair, Department of Pathology and Laboratory Medicine



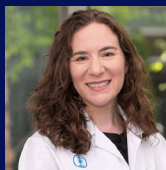
Sean E. Healtton, MD, PhD
Hematology/
Oncology Fellow



Steven Horwitz, MD
Attending Physician,
Lymphoma Service



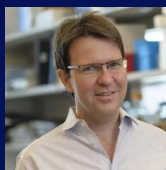
Andrew Intlekofer, MD, PhD
Assistant Member,
Human Oncology &
Pathogenesis Program



Alison J. Moskowitz, MD
Associate Attending Physician,
Lymphoma Service



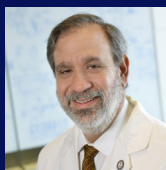
Ariela Noy, MD
Member,
Lymphoma Service



Hans-Guido Wendel, MD
Member/Professor,
Cancer Biology and
Genetics Program



Joachim Yahalom, MD, FACR, FASTRO
Attending Radiation Oncologist,
External Beam Radiotherapy
Service



Andrew D. Zelenetz, MD, PhD
Medical Director, Quality Informatics;
Attending Physician,
Lymphoma Service

INVITED FACULTY

Christopher R. Flowers, MD, MS

Division Head, Division of Cancer Medicine;
Chair, Professor, Department of
Lymphoma/Myeloma
MD Anderson Cancer Center
Houston, TX

Georg Lenz, MD

Professor of Medicine;
Director Department of Hematology,
Oncology and Pneumology
University Hospital Münster
Münster Germany

Brian K. Link, MD

Professor Emeritus of Internal Medicine -
Hematology, Oncology, and
Blood & Marrow Transplantation
University of Iowa College of Medicine
Iowa City, IA

Kami J. Maddocks, MD

Professor in the College of Medicine
The Ohio State University
Columbus, OH

David G. Maloney, MD, PhD

Fred Hutchinson Cancer Research Center
University of Washington
Seattle, WA

Coraline Mlynarczyk, PhD

Assistant Professor of Medicine (Hematology)
Yale School of Medicine
New Haven, CT

Laura Pasqualucci, MD

Professor of Pathology and Cell Biology
Columbia University
New York, NY

Barbara Pro, MD

Professor of Medicine;
Director of Lymphoma Program
Herbert Irving Comprehensive Cancer Center
New York, NY

Sandrine Roulland, PharmD, PhD

Inserm Research Director
Centre d'Immunologie de Marseille Luminy
Marseille, France

Sarah Rutherford, MD

Associate Professor of Clinical Medicine
Weill Cornell Medicine
New York, NY

Clémentine Sarkozy, MD, PhD

Institut Curie
Paris, France

Margaret A. Shipp, MD

Chief, Division of Hematologic Neoplasia,
Dana Farber Cancer Institute;
Professor of Medicine, Harvard Medical School
Boston, MA

MSK FACULTY

Ashley Ames, MSN, RN, FNP-BC

Advanced Practice Provider

Annalisa Benz, BSN, RN, OCN

Clinical Nurse III

Alexander P. Boardman, MD

Assistant Attending Physician,
Lymphoma Service

Theresa Davey, PA

Advanced Practice Provider

Zachary Epstein-Peterson, MD

Attending Physician,
Lymphoma Service

Lorenzo Falchi, MD

Assistant Attending Physician,
Lymphoma Service

Jennifer Gorelov, AGNP-BC, MSN

Advanced Practice Provider

Dana Guerra, BSN, RN

Clinical Nurse II

Paul A. Hamlin, MD

Attending Physician,
Lymphoma Service

Brandon Imber, MD, MA

Assistant Attending Radiation Oncologist,
External Beam Radiotherapy Service

Anita Kumar, MD

Associate Attending Physician,
Lymphoma Service

Carissa Laudati, MSN, FNP-BC, OCN®

Advanced Practice Provider

Efrat Luttwak, MD, MPH

Assistant Attending Physician,
Lymphoma Service

Ivan Maillard, MD, PhD

Attending Physician, Leukemia Service;
Head of the Division of Hematologic
Malignancies

M. Lia Palomba, MD

Member, Lymphoma Service
and Cellular Therapeutics Service

Shenon Sethi, MBBS

Assistant Attending Pathologist,
Hematopathology Service

Gunjan L. Shah, MD

Assistant Attending Physician
Bone Marrow Transplant and See all Cellular
Therapy Services

Marcel Smith, MSN, FNP, MSPHarm, AOCNP

Advanced Practice Provider

Emily Spevack, BSN, RN, OCN®

Clinical Nurse III

Raphael Steiner, MD

Associate Attending Physician,
Lymphoma Service

Robert Stuver, MD

Assistant Attending Physician,
Lymphoma Service

Pallawi Torka, MD

Assistant Attending Physician,
Lymphoma Service

Jasmine M. Zain, MD


Lymphoma Service

Ting Zhou, MD

Assistant Attending Pathologist,
Hematopathology Service

Memorial Sloan Kettering Cancer Center adheres to the ACCME and ANCC's Standards for Integrity and Independence in Accredited Continuing Education. All relevant financial relationships have been mitigated prior to the commencement of the activity.

Friday • April 25

Time	Session/Faculty
7:00 AM	In-person Attendee Breakfast and Check-in
7:55 AM	Virtual Attendee Zoom Sign On
8:00 AM	Welcome and Introduction Gilles Salles, MD, PhD
8:05 AM	PLENARY LECTURE Department of Medicine Grand Rounds CHAIR: Gilles Salles, MD, PhD
	 Epidemiology and Outcomes of Lymphoma Christopher R. Flowers, MD, MS

Current Challenges in the Management of Patients with Follicular Lymphoma

CHAIRS: Efrat Luttwak, MD, MPH • Gilles Salles, MD, PhD

- 9:05 AM **Treatment Initiation Versus Active Surveillance**
Brian K. Link, MD
- 9:35 AM **Histologic Transformation of Follicular Lymphoma**
Clémentine Sarkozy, MD, PhD
- 10:05 AM **New Drugs on the Horizon for Follicular Lymphoma**
Andrew D. Zelenetz, MD, PhD
- 10:25 AM **Panel Discussion**
- 10:45 AM Break

Advances in Therapeutic Strategies for Mantle Cell Lymphoma

CHAIRS: Ahmet Dogan, MD, PhD • Anita Kumar, MD

- 11:00 AM **Recent Insights Into Mantle Cell Lymphoma Biology**
Shenon Sethi, MBBS
- 11:15 AM **Current Dilemma in the First Line Therapy Setting**
Kami J. Maddocks, MD
- 11:45 AM **Cellular Therapies for Treating Mantle Cell Lymphoma**
Zachary Epstein-Peterson, MD
- 12:00 PM **Panel Discussion**
- 12:20 PM Lunch Break

Hodgkin Lymphoma

CHAIRS: Alison J. Moskowitz, MD • Raphael Steiner, MD

1:20 PM

KEYNOTE ADDRESS



Biology of Hodgkin Lymphoma

Margaret A. Shipp, MD

2:05 PM

The Evolving Standard of Care in First Line

Robert Stuver, MD

2:25 PM

Management of Older Patients

Sarah Rutherford, MD

2:45 PM

Options After First Line Treatment Failure

Alison J. Moskowitz, MD

3:05 PM

Panel Discussion

3:25 PM

Break

The Dark Side of B-Cells

CHAIRS: Sean E. Heaton, MD, PhD • Andrew Intlekofer, MD, PhD

3:40 PM

Germinal Center Biology

Laura Pasqualucci, MD

4:10 PM

B-Cell Dynamics in the Germinal Center

Coraline Mlynarczyk, PhD

4:40 PM

Notch and Marginal Zone Biology

Ivan Maillard, MD, PhD

5:10 PM

Single Cell Analysis of B-Cell Lymphoma

Sandrine Roulland, PharmD, PhD

5:40 PM

Panel Discussion

5:55 PM

Closing Remarks and Adjourn

Gilles Salles, MD, PhD

Breakout Session Available for APPs and Nurses

Refer to the next page for more information. Pre-registration required.

Welcome Networking Reception

6:00—7:00 PM • Lobby

Join us for an opportunity to connect and interact with fellow attendees and faculty. Hors d'oeuvre and refreshments will be served.

Empowering APPs and Nurses: Professional Development Breakout Session

Friday, April 25 • 3:40—5:45 PM • Location TBA

CHAIR: Lauren Drosick, PA-C

- 3:40 PM **Welcome and Introduction**
Lauren Drosick, PA-C
- 3:45 PM **Mantle Cell Lymphoma in Ambulatory Setting:
Focus on Supportive Care and Adverse Event Management**
Carissa Laudati, MSN, FNP-BC, OCN®
- 4:05 PM **CAR T-Cell Therapy for B Cell Lymphoma:
Approach to Management and Care in the
Outpatient Setting**
Ashley Ames, MSN, RN, FNP-BC
Dana Guerra, BSN, RN
Emily Spevack, BSN, RN, OCN®
- 4:25 PM **Research Spotlight:
Updates of Active Hodgkin's Lymphoma Protocols
at Memorial Sloan Kettering**
Theresa Davey, PA-C
Marcel Smith MSN, FNP, MSPharm, AOCNP
- 4:50 PM **Management of Fertility in Patients with Hodgkin's and
Non-Hodgkin Lymphoma**
Annalisa Benz, BSN, RN, OCN
- 5:00 PM **Lymphoma Survivorship:
Optimizing Quality of Life and Monitoring
Long Term Side Effects of Treatment**
Jennifer Gorelov, AGNP-BC, MSN
- 5:20 PM **Panel Discussion**
- 5:40 PM **Closing Remarks**
Lauren Drosick, PA-C
- 5:45 PM **Adjourn and Return to Lobby for Reception**

Saturday • April 26

Time	Session/Faculty
7:30 AM	In-person Attendee Breakfast
7:55 AM	Virtual Attendee Zoom Sign On
8:00 AM	Welcome and Introduction Gilles Salles, MD, PhD

Improving Outcomes of Patients with T-Cell Lymphoma

CHAIRS: Steven Horwitz, MD • Zachary Epstein-Peterson, MD

8:05 AM	Advances in Biology Ting Zhou, MD
8:20 AM	Optimizing First Line Therapy Barbara Pro, MD
8:50 AM	Advancing Therapeutic Options in the Relapse Setting Jasmine M. Zain, MD
9:10 AM	Panel Discussion
9:30 AM	Break

Aggressive B-Cell Lymphoma: Addressing Remaining Gaps on the Path to a Definitive Cure

CHAIRS: Paul A. Hamlin, MD • Pallawi Torka, MD

9:45 AM	Progress in Large B-Cell Lymphoma Management Georg Lenz, MD
10:15 AM	New Antibodies Engaging Immune Cells Lorenzo Falchi, MD
10:35 AM	Update on Primary Mediastinal B-Cell Lymphoma Raphael Steiner, MD
10:50 AM	Update on Burkitt Lymphoma Ariela Noy, MD

Car T-Cell Therapies in Large B-Cell Lymphoma: Who, When, and How?

CHAIRS: Alexander P. Boardman, MD • Gunjan Shah, MD, MS

11:05 AM **Optimizing Patient Selection in 2025**
M. Lia Palomba, MD

11:25 AM **Radiation Therapy and CAR T**
Brandon Imber, MD, MA

11:45 AM **KEYNOTE ADDRESS**



Lessons and Challenges
David G. Maloney, MD, PhD

12:30 PM **Panel Discussion**

12:55 PM **Closing Remarks and Adjourn**
Gilles Salles, MD, PhD

Farewell Lunch Reception

12:55—1:55 PM • Lobby

Join us for a final opportunity to network and connect with fellow attendees and faculty during a concluding luncheon.

Register by February 28 for early rates:

msk.org/LymphomaSymposium

Accreditation

Memorial Sloan Kettering Cancer Center is accredited by the Accreditation Council for Continuing Medical Education to provide continuing medical education for physicians.

AMA CREDIT DESIGNATION STATEMENT

Memorial Sloan Kettering Cancer Center designates this live activity for a maximum of **13.00 AMA PRA Category 1 Credits™**. Physicians should claim only the credit commensurate with the extent of their participation in the activity.

MOC/CC RECOGNITION STATEMENTS

Successful completion of this CME activity, which includes participation in the evaluation component, enables the participant to earn up to:

- 13.00 Medical Knowledge MOC points in the American Board of Internal Medicine's (**ABIM**) Maintenance of Certification (MOC) program; and
- 13.00 Lifelong Learning (CME) credits in the American Board of Pathology's (**ABPath**) Continuing Certification program.

It is the CME activity provider's responsibility to submit participant completion information to ACCME for the purpose of granting ABIM or ABPath MOC/CC credit.

ANCC CNE STATEMENT

Memorial Sloan Kettering Cancer Center–Nursing Professional Development / Continuing Education is accredited with distinction as a provider of nursing continuing professional development (NCPD) by the American Nurses Credentialing Center's Commission on Accreditation.

13.00 contact hours will be awarded to participants who attend the program in its entirety and complete a program evaluation.

Partial credit not awarded.



Memorial Sloan Kettering
Cancer Center



Early rates available until February 28.
Scan the QR code or visit:

msk.org/LymphomaSymposium



This symposium offers participants the choice of attending either in person or virtually. In-person registration includes continental breakfast, lunch, refreshment breaks, and a complimentary invitation to both the networking receptions.

Discounted registration is available for specific groups. Visit the symposium website for additional details.

	Early*	General
Physicians (MDs, PhDs, and DOs)	\$400	\$450
Advanced Practice Providers	\$150	\$200
Nurses and Other Healthcare Providers	\$100	\$150
Residents and Fellow**	\$50	\$100
Industry Professionals***	n/a	\$785
MSK Employees	Complimentary	

*Apply promotion code **ERLYM25** during registration for early rates.

The resident and fellow rate is **non-refundable for in-person registration.

***An “**industry professional**” is defined as any individual, regardless of their profession type (such as MDs, PhDs, APPs, RNs, etc.) that is employed by an ineligible company.

For details on our **cancellation terms**, visit the symposium website.



Memorial Sloan Kettering
Cancer Center

