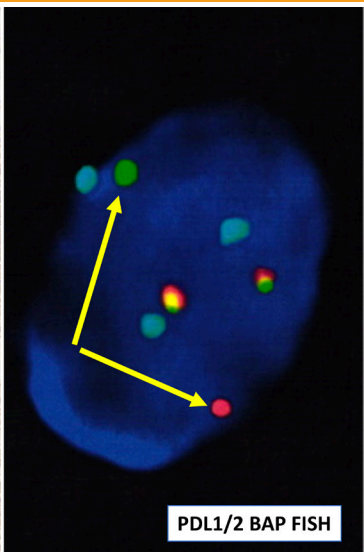
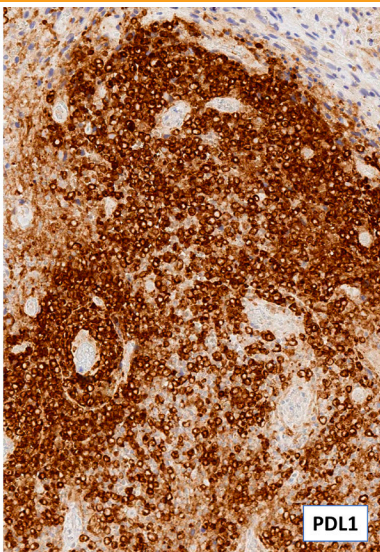
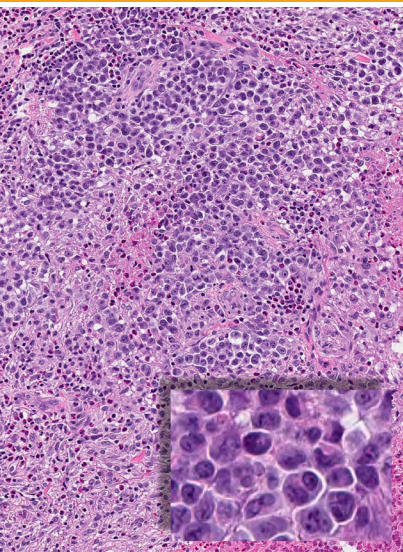




Memorial Sloan Kettering
Cancer Center

MASTERCLASS IN LYMPHOMA PATHOLOGY



MAY 12-13, 2018 | NEW YORK, NY

Includes a special registration discount for the:
3rd Annual MSK Symposium on Lymphoma
May 11-12, 2018



#MSKLYMPHOMACME

MASTERCLASS IN LYMPHOMA PATHOLOGY

This one and half day course will provide a comprehensive review of new entities and challenging areas in the new **2017 WHO Classification of Lymphoid Neoplasms using case-based examples.**

The course is designed as an interactive slide seminar using microscope based teaching and will be **limited to 30 participants.**

Participants will have the opportunity to review the H&E, immunohistochemistry, flow cytometry and molecular findings of the cases on the afternoon of May 12, and the cases will be discussed with the faculty on the second day. Special focus will be given to integration of phenotypic and genetic findings into a final comprehensive diagnosis.

There will be ample opportunity to interact with the faculty during the course to discuss various topics important in hematopathology including diagnostic challenges, immunophenotyping, molecular testing, cytogenetics, education, academic career development and operational issues.

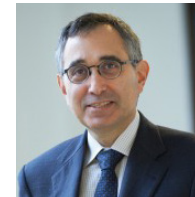
EDUCATIONAL OBJECTIVES

- Create an interactive learning environment that provides ample opportunity to discuss challenging areas in lymphoma pathology with the faculty
- Review clinical, pathological and molecular features of the new entities and challenging areas in the new 2017 WHO Classification of Lymphoid Neoplasms
- Provide insights for utilization and integration of advanced ancillary techniques such as multiparameter flow cytometry and comprehensive genomic profiling into lymphoma diagnosis
- Explore emerging challenges in lymphoma pathology such as precursor diseases, new prognostic and predictive biomarkers, impact of targeted therapies and assessment of minimal residual disease

TARGET AUDIENCE

The target audience includes pathologists, hematopathologists, molecular pathologists, medical and radiation oncologists, scientists, and medical trainees involved in diagnosis, treatment, and biomedical research of lymphoma.

MSK COURSE DIRECTOR



Ahmet Dogan, MD, PhD

Chief, Hematopathology Service
Departments of Pathology and Laboratory Medicine
Memorial Sloan Kettering Cancer Center

GUEST FACULTY



Eric D. Hsi, MD

Departments of Pathology and Laboratory Medicine
Cleveland Clinic

MSK FACULTY

Wenbin Xiao, MD, PhD

Assistant Attending
Department of Pathology

Mikhail Roshal, MD PhD

Associate Attending
Department of Pathology

Mariko Yabe, MD, PhD

Assistant Attending
Department of Pathology

Caleb Ho, MD

Assistant Attending
Department of Pathology

Kseniya Petrova-Drus, MD, PhD

Assistant Attending
Department of Pathology

Filiz Sen, MD

Associate Attending
Department of Pathology

Yanming Zhang, MD

Director, Cytogenetics Laboratory
Attending
Department of Pathology

Maria E. Arcila, MD

Director, Diagnostic Molecular
Pathology Laboratory
Associate Attending
Department of Pathology



SCIENTIFIC AGENDA

Location:

Rockefeller Research Laboratories
Rooms 116 & 117 (Refreshments in Room 104)
430 East 67th Street
New York, NY 10065

SATURDAY, MAY 12

- 3:30 PM **Course Registration**
(Only applicable for participants not attending the MSK Symposium on Lymphoma.)
- 4:00 PM **Participant Case Preview**
Refreshments will be provided.
- 10:00 PM **Adjourn**

SUNDAY, MAY 13

- 7:30 AM **Breakfast**
- 8:00 AM **Faculty Case Review**
- 10:00 AM **Break & Room Rotation**
- 10:30 AM **Faculty Case Review**
- 12:30 PM **Lunch**
- 1:30 PM **Faculty Case Review**
- 3:30 PM **Break & Room Rotation**
- 4:00 PM **Faculty Case Review**
- 6:00 PM **Adjourn**

There will be ample opportunity to interact with the faculty throughout the course.

SPECIAL DISCOUNT OFFER

Attendees registered for the Masterclass in Lymphoma Pathology (May 12-13) will receive a registration discount to attend the 3rd Annual MSK Symposium on Lymphoma.



3rd Annual MSK SYMPOSIUM ON LYMPHOMA

May 11-12, 2018 • Zuckerman Research Center

This symposium will **feature updated information on lymphoma biology, diagnosis, immunology, and genetics**, and ongoing efforts to translate the scientific discoveries into novel treatment strategies for a variety of lymphomas.

There will be two panels available during lunch, one hosted by the Adult BMT Service, and the other by the Myeloma Service. Space is limited for both luncheon events and RSVP is required during course registration.

SYMPOSIUM CHAIR

Anas Younes, MD, Chief, Lymphoma Service

www.mskcc.org/lymphomacourse



Memorial Sloan Kettering
Cancer Center

REGISTRATION

	Attending the Masterclass in Lymphoma Pathology <u>only</u>	Attending the Masterclass & the <u>MSK Symposium on Lymphoma*</u>
Physicians (MDs, PhDs and DOs)	\$350	\$300
Residents, Fellows, Nurses and Other Healthcare Providers	\$150	\$100
Industry Professionals*	\$550	\$500

*Industry professionals may attend CME activities for their own education. Marketing, sales, and promotion of products and services is strictly prohibited at MSK CME activities.

Register Online:
www.mskcc.org/LymphomaPath

Lymphoma Symposium Registration:

Once you register for the Masterclass in Lymphoma Pathology, you will receive an email confirmation with a promotion code to use for the 3rd Annual MSK Symposium on Lymphoma.

Registration includes continental breakfast, lunch, and refreshment breaks. Please contact cme@mskcc.org at least one week prior to the course if you have any special dietary needs.

- **30% Discounted Rate for MSK Alumni and MSK Alliance Members:** MSK offers a 30% discounted rate to all MSK Alumni and MSK Alliance members to attend a CME course. Please contact cme@mskcc.org for a promotion code or more information.
- **MSK Staff Registration:** Registration is complimentary for MSK staff. However, you must register online: www.mskcc.org/LymphomaPath

ACCREDITATION STATEMENT

MSK is accredited by the Accreditation Council for Continuing Medical Education (ACCME) to provide continuing medical education for physicians.



AMA CREDIT DESIGNATION STATEMENT

MSK designates this live activity for a maximum of **15.00 AMA PRA Category 1 Credit(s)**[™]. Physicians should only claim credit commensurate with the extent of their participation in the activity.

FACULTY DISCLOSURE

It is the policy of MSK to make every effort to insure balance, independence, objectivity, and scientific rigor in all continuing medical education activities which it provides as an ACCME accredited provider. In accordance with ACCME guidelines and standards, all faculty participating in an activity provided by MSK are expected to disclose any significant financial interest or other relationship with the manufacturer(s) of any commercial product(s) and/or provider(s) of commercial services which are discussed by the faculty members in an educational presentation. As required by the ACCME, when an unlabeled use of a commercial product or an investigational use not yet approved for any purpose is discussed during an educational activity, MSK requires the speaker to disclose that the product is not labeled for the use under discussion or that the product is still investigational.



CONFERENCE LOCATION

Memorial Sloan Kettering Cancer Center
Rockefeller Research Laboratories
430 East 67th Street
New York, NY 10065

ACCOMMODATIONS

MSK has negotiated special rates and amenities at select hotels in Manhattan. For information on hotels in the area of MSK with discounted rates, please visit: www.mskcc.org/cme.

CONTACT

For more information, including all upcoming MSK CME courses, visit our website at www.mskcc.org/cme. To contact us directly, email cme@mskcc.org.

Join the conversation:

#MSKLymphPathCME

 /MSKCME

 @MSKCME

 MSK CME LinkedIn Group