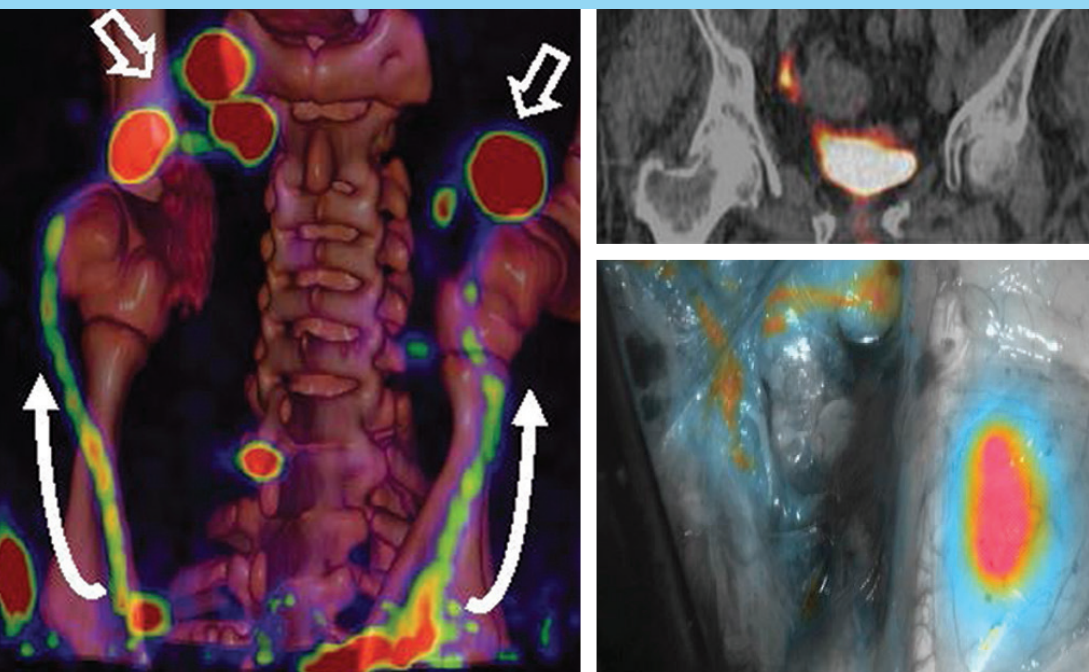


Memorial Sloan Kettering Cancer Center  
is pleased to announce:

# Intraoperative Imaging Technologies for Cancer Detection and Treatment



*A Cutting Edge Overview on the Progress & Future  
of Intraoperative Imaging Technologies.*

Friday, October 7, 2016


Conference Location:

Memorial Sloan Kettering Cancer Center  
Rockefeller Research Laboratories  
430 67th Street, New York, NY, 10065



Memorial Sloan Kettering  
Cancer Center



A photograph of three surgeons in an operating room, wearing blue scrubs, masks, and caps. They are looking towards the right side of the frame, where a patient is lying on a table. The room is dimly lit, with surgical lights visible in the background.

*Image-guided Intraoperative Imaging Technologies enable surgeons to deliver therapies, confirm procedure status, and modify treatment management during the course of an operation, often enhancing outcomes.*

*At Memorial Sloan Kettering, we use multiple imaging techniques for various types of cancer.*

## Course Overview

The overall goal of the course is to update the learner on the progress made in the area of intraoperative imaging technologies for oncology.

This course is directed towards surgical oncologists, radiologists, pathologists, engineers, research scientists, technologists.

### EDUCATIONAL OBJECTIVES

- Increase familiarity with available probe-device developments and software analysis tools for surgical use.
- Identify and implement appropriate intraoperative imaging strategies that can be leveraged to address specific biological and clinical questions /applications and to inform clinical trial designs.
- Facilitate integration of new intraoperative tools into standard surgical practice.

### TARGET AUDIENCE

Surgical oncologists, radiologists, pathologists, researchers, technologists.

[www.mskcc.org/intraoperativecourse](http://www.mskcc.org/intraoperativecourse)

# Course Faculty

## MSK COURSE DIRECTORS



**Nadeem R. Abu-Rustum, MD, FACOG, FACS**  
Chief, Gynecology Service;  
Vice Chair for Technology Development,  
Department of Surgery;  
Avon Chair in Gynecologic Oncology



**Michelle S. Bradbury, MD, PhD**  
Director, Intraoperative Imaging, Radiology;  
Co-Chair, Innovation & Technology Team;  
Co-Director, NCI MSKCC-Cornell Center for  
Translation of Cancer Nanomedicines,  
Department of Radiology;  
Associate Professor, Gerstner Sloan Kettering  
Graduate School of Biomedical Sciences

## MSK FACULTY

**Prasad Adusumilli, MD**  
Deputy Chief, Thoracic Service,  
Department of Surgery

**Jan Grimm, MD, PhD**  
Associate Member,  
Mol Pharmacology Program;  
SKI Associate Professor,  
Gerstner Sloan Kettering Graduate School

**Krishna Juluru, MD**  
Associate Member;  
Associate Attending Radiologist;  
Associate Professor,  
Department of Radiology

**Moritz Kircher, MD, PhD**  
Associate Member;  
Associate Attending Radiologist;  
Associate Professor,  
Department of Radiology

**Jason Lewis, PhD**  
Emily Tow Jackson Chair in Oncology;  
Vice Chair for Research,  
Department of Radiology;  
Chief Attending, Radiochemistry  
and Imaging Sciences Service

**Lee McDonald, PhD**  
Core Facility Head,  
Investigational Products Core

**Snehal Patel, MD**  
Attending,  
Department of Surgery

**Milind Rajadhyaksha, PhD**  
Associate Member,  
Department of Medicine

**Thomas Reiner, PhD**  
Associate Member,  
Department of Radiology;  
Associate Professor,  
Gerstner Sloan Kettering Graduate School

**Amber Simpson, PhD**  
Assistant Attending,  
Department of Surgery

## MSK OPENING REMARKS

**Hedvig Hricak, MD, PhD, Dr(hc)**  
Chair, Department of Radiology  
Carroll and Milton Petrie Chair

**Peter T. Scardino, MD**  
Chairman, Department of Surgery  
The David H. Koch Chair

## INVITED FACULTY

**Matthew S. Bogoyo, PhD**  
Professor, Department of Pathology,  
Stanford University School of Medicine

**Keyvan Farahani, PhD**  
Program Director, Imaging Guided  
Intervention Branch, Cancer Imaging Program,  
National Cancer Institute

**Piotr Grodzinski, PhD**  
Director, NCI Office of Cancer  
Nanotechnology Research,  
National Cancer Institute

**William Haulbrook, PhD, JD**  
Partner, Choate Hall & Stewart

**Christina Liu, PhD, PE**  
Program Director, NCI Office of  
Cancer Nanotechnology Research  
National Cancer Institute

**Brian Reese, PhD, MBA, JD**  
Choate Hall & Stewart

**Eben Rosenthal, MD**  
Professor of Otolaryngology and Radiology,  
Ann & John Doerr Medical Director,  
Stanford Cancer Center

# Intraoperative Imaging Technologies for Cancer Detection and Treatment

Friday, October 7, 2016

## Scientific Agenda

- 8:00-8:30 am **BREAKFAST**
- 8:30-8:45 am Opening Remarks  
Hedvig Hricak, MD, PhD, Dr(hc)  
Peter T. Scardino, MD
- 8:45-9:00 am Cancer Nanotechnology Research  
Piotr Grodzinski, PhD  
Christina Liu, PhD, PE
- 9:00-9:20 am Keynote Address and Special Lectureship  
[International Society of Image-Guided Surgery](#)  
Eben Rosenthal, MD

### Probes & Novel Image Guidance

MODERATOR: Michelle Bradbury, MD, PhD

- 9:20-9:40 am Introduction to Intraoperative Imaging - a 20 minute Primer  
Jason Lewis, PhD
- 9:40-10:00 am Clinically Translated C Dots for Molecularly Targeted Treatment of Nodal Disease and Peripheral Nerve Mapping  
Michelle Bradbury, MD, PhD
- 10:00-10:20 am Interoperative Imaging of Oral Cancer with PARP1-Targeted Tracers  
Thomas Reiner, PhD
- 10:20-10:40 am Intraoperative Image Guided Drug Delivery  
Keyvan Farahani, PhD
- 10:40-11:00 am Discussion
- 11:00-11:20 am **BREAK**
- 11:20-11:40 am ICG for Sentinel Node Mapping in Gynecologic Cancers  
Nadeem R. Abu-Rustum, MD, FACOG, FACS
- 11:40-12:00 pm New Approaches to Imaging Radio Tracers During Surgery  
Jan Grimm, MD, PhD
- 12:00-12:20 pm Raman Nanoparticles for High Precision Cancer Imaging and Theranostics  
Moritz Kircher, MD, PhD
- 12:20-12:40 pm Imaging Tumor Margins Using Small Molecule Probes of Protease Activity  
Matthew S. Bogyo, PhD
- 12:40-1:00 pm Discussion
- 1:00-2:00 pm **LUNCH**

# Intraoperative Imaging Technologies for Cancer Detection and Treatment

Friday, October 7, 2016

## Device Development & Image Analysis Tools

MODERATOR: **Nadeem R. Abu-Rustum, MD, FACOG, FACS**

- 2:00-2:20 pm** Peri-Operative Confocal Imaging-Guided Treatment of Basal Cell Carcinomas - for Mohs Surgery, Laser Ablation  
**Milind Rajadhyaksha, PhD**
- 2:20-2:40 pm** In Vivo Imaging for Head and Neck Cancer Surgery  
**Snehal Patel, MD**
- 2:40-3:00 pm** WiPOX - Wireless Pulse Oximetry for Intra-Operative Tissue Oxygenation Monitoring  
**Prasad Adusumilli, MD**
- 3:00-3:20 pm** Development and Clinical Translation of Image-Guided Liver Surgery Systems  
**Amber Simpson, PhD**
- 3:20-3:40 pm** Discussion
- 3:40-4:00 pm** **BREAK**
- 4:00-4:20 pm** Opportunities for Using Advanced Visualization Tools in the IntraOperative Setting  
**Krishna Juluru, MD**
- 4:20-4:40 pm** IND and IDE Regulatory Issues for Intraoperative Products  
**Lee McDonald, PhD**
- 4:40-5:00 pm** Patent Claim Strategies to Maximize Portfolio Value  
**William Haulbrook, PhD, JD**
- 5:00-5:20 pm** Patent Issues for the Clinical Investigator - What, Why & How  
**Brian Reese, PhD, MBA, JD**
- 5:20-5:40 pm** Concluding Remarks

# Registration

	EARLY Before 9/9/16	GENERAL After 9/9/16
MDs, PhDs and DOs	\$300	\$350
MSK Alliance and MSK Alumni	\$200	\$250
Residents, Fellows, RNs and Other Healthcare Providers	\$100	\$150
Industry Members*	\$800	\$800

Register online at:

[www.mskcc.org/intraoperativecourse](http://www.mskcc.org/intraoperativecourse)

## Special CME Discount

*For discounted registration in both the Intraoperative Imaging Course and the Ovarian Course taking place at MSK, please visit the conference website for more information.*

### REGISTRATION

Registration includes continental breakfast, lunch, and refreshment breaks. Please contact us at least one week prior to the course if you have any special dietary needs.

Registration is complimentary for MSK staff who wish to attend this course. However, you must register online by visiting the Continuing Medical Education page on [OneMSK](#).

### COURSE DESIGN

This course is comprised of lectures and interactive audience participation encouraging the intellectual exchange of ideas between faculty and participants.

### ACCOMMODATIONS

For information on hotels in the area of MSKCC with discounted rates, please visit: [www.mskcc.org/accommodations](http://www.mskcc.org/accommodations).

### ACCREDITATION STATEMENT

MSK is accredited by the Accreditation Council for Continuing Medical Education (ACCME) to provide continuing medical education for physicians.

### AMA CREDIT DESIGNATION STATEMENT

MSK designates this live activity for a maximum of *7.0 AMA PRA Category 1 Credits™*. Physicians should only claim credit commensurate with the extent of their participation in the activity. The AMA has determined that physicians not licensed in the United States but who participate in this CME activity are eligible for *7.0 AMA PRA Category 1 Credits™*.

### FACULTY DISCLOSURE

It is the policy of MSK to make every effort to insure balance, independence, objectivity, and scientific rigor in all continuing medical education activities which it sponsors as an ACCME accredited provider. In accordance with ACCME guidelines and standards, all faculty participating in an activity sponsored by MSK are expected to disclose any significant financial interest or other relationship with the manufacturer(s) of any commercial product(s) and/or provider(s) of commercial services which are discussed by the faculty members in an educational presentation. As required by the ACCME, when an unlabeled use of a commercial product or an investigational use not yet approved for any purpose is discussed during an educational activity, MSK requires the speaker to disclose that the product is not labeled for the use under discussion or that the product is still investigational.

### CONTACT

Continuing Medical Education  
Memorial Sloan Kettering Cancer Center  
633 Third Avenue, 12th Floor  
New York, NY 10017  
[cme@mskcc.org](mailto:cme@mskcc.org)

\*Industry Members: Registration is for educational purposes only. Marketing, sales, and promotion of products and services are prohibited at CME activities.