

Memorial Sloan Kettering presents:

# 3<sup>rd</sup> Annual Oncologic PET/CT CME Course

An Organ System Approach to Integrating  
PET and CT Findings for Optimal  
PET/CT Interpretation

NOW EXPANDED TO **3 DAYS** | INCLUDES **SAM CREDITS**

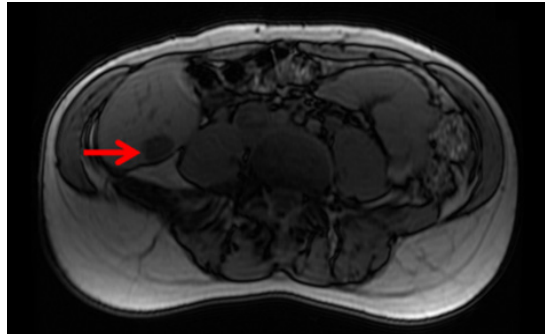
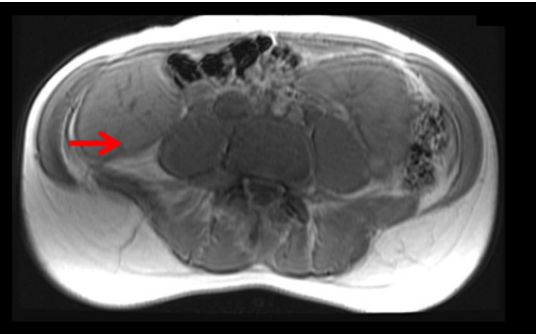
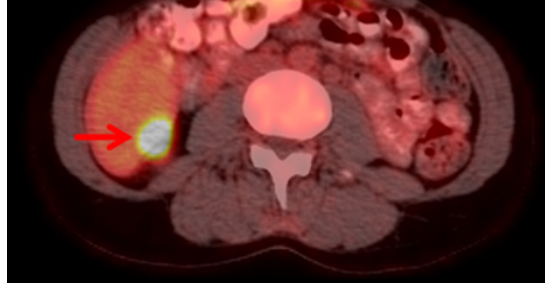
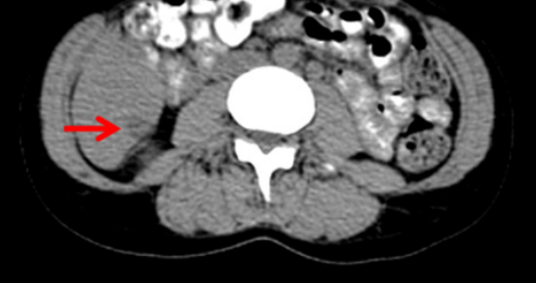


Thursday-Saturday, October 19-21, 2017

Memorial Sloan Kettering Cancer Center  
Rockefeller Research Laboratories  
430 East 67th Street  
New York, NY 10065



Memorial Sloan Kettering  
Cancer Center



“ *EXCELLENT* course. Really enjoyed the combination of lecture with workstation cases.

*A very well organized conference with excellent instructors.*

*Workstation time was crucial and well mentored.*

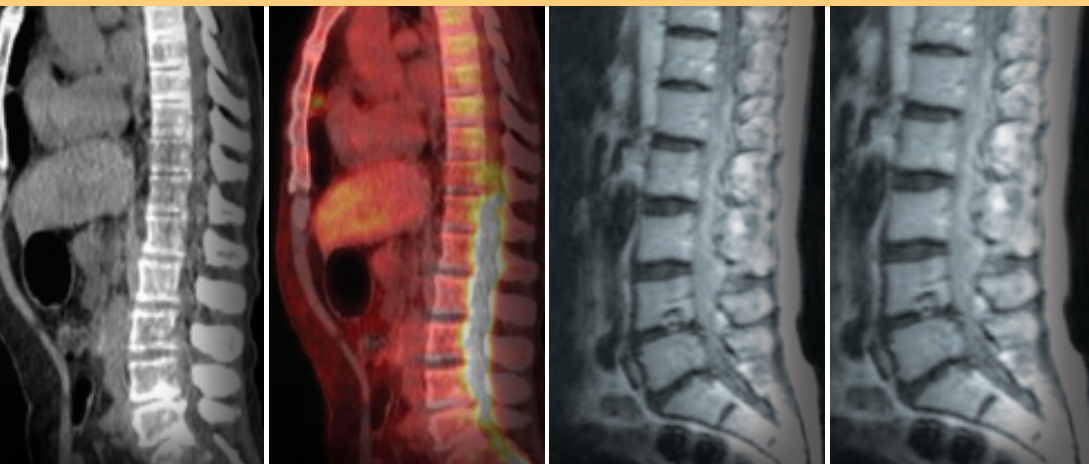
*Dr. Ulaner is an amazing speaker and teacher. The way he spoke and presented the information made it very easy to understand and apply to my practice.*

*Excellent job of welcoming each of us and making us feel free to ask questions and interact with the faculty.*

*Fantastic course... I will be back next year.*

- 2015-2016 Course Participant Quotes

[www.mskcc.org/petct](http://www.mskcc.org/petct)



3rd Annual CME Course:

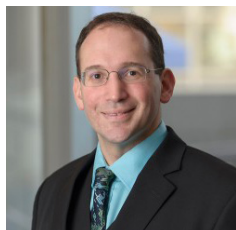
## ONCOLOGIC FDG PET/CT

An Organ System Approach to Integrating PET and CT Findings for Optimal PET/CT Interpretation

This course will cover the body from head-to-toe, in an organ systems based approach. It will emphasize the integration of FDG PET and CT findings to arrive at the best interpretation of imaging findings in each organ system. This will provide attendees with an organized systematic approach to reading oncologic FDG PET/CT.

This course is designed for Radiologists and Nuclear Medicine Physicians who interpret oncologic FDG PET/CT.

### MSK COURSE DIRECTOR



#### Gary Ulaner, MD, PhD

Associate Member  
Department of Radiology  
Memorial Sloan Kettering Cancer Center,  
Weill Cornell Medical School

### MSK FACULTY

#### Wolfgang Weber, MD

Chief, Molecular Imaging and Therapy

#### Heiko Schoder, MD

Attending Radiologist

#### Neeta Pandit-Taskar, MD

Attending Radiologist

#### Lorenzo Mannelli, MD, PhD

Assistant Attending Radiologist

#### Joe Osborne, MD, PhD

Associate Attending Radiologist

### VISITING FACULTY

#### Marc Seltzer, MD, FACR

Associate Professor  
Director, PET/CT  
Dartmouth

#### Rathan Subramaniam, MD, PhD, FACNM

Professor & Chief of Nuclear Medicine  
UT Southwestern

#### Andy Quon, MD

Professor  
University of California  
Los Angeles

# SCIENTIFIC AGENDA

*Now Expanded  
to 3 Days!*

## DAY 1 October 19, 2017

- 7:00-8:00 AM REGISTRATION AND BREAKFAST
- 8:00-9:00 AM PET/CT of the Musculoskeletal System:  
Part 1-Bone
- 9:00-10:00 AM SUV101:  
Understanding SUV and  
When it is Valuable in a Report
- 10:00-12:00 PM WORKSTATION CASES
- 12:00-1:00 PM LUNCH
- 1:00-2:00 PM PET/CT of the Head/Neck
- 2:00-3:00 PM PET/CT of the Musculoskeletal System:  
Part 2-Muscle, Nerve
- 3:00-5:00 PM WORKSTATION CASES
- 5:00-7:00 PM Additional Workstation Time Available

## DAY 2 October 20, 2017

- 7:30-8:00 AM BREAKFAST
- 8:00-9:00 AM PET/CT of the Abdominal Organs
- 9:00-10:00 AM PET/CT of Lymphatic System
- 10:00-12:00 PM WORKSTATION CASES
- 12:00-1:00 PM LUNCH
- 1:00-2:00 PM PET/CT of the Lung
- 2:00-3:00 PM PET/CT of the Pelvic Organs
- 3:00-5:00 PM WORKSTATION CASES
- 5:00-7:00 PM Additional Workstation Time Available

## DAY 3 October 21, 2017

- 7:30-8:00 AM BREAKFAST
- 8:00-9:00 AM PET/CT of the GI Tract and Peritoneum
- 9:00-10:00 AM Challenging PET/CT Cases
- 10:00-12:00 PM WORKSTATION CASES
- 12:00-1:00 PM LUNCH
- 1:00-2:00 PM PET/CT of Mediastinum, Heart, Pleura
- 2:00-3:00 PM Challenging PET/CT Cases
- 3:00-5:00 PM WORKSTATION CASES  
Conclusion & SAM Questions

# REGISTRATION

	EARLY* BEFORE 7/31/17	GENERAL AFTER 7/31/17
All Healthcare Providers	\$1,350	\$1,500

Registration includes continental breakfast, lunch and refreshment breaks. Please contact us at least one week prior to the course if you have any special dietary needs.

- **30% Discounted Rate for MSK Alumni and MSK Alliance Members**  
MSK offers a discounted rate to all MSK Alumni and MSK Alliance members to attend a CME course. Please contact [cme@mskcc.org](mailto:cme@mskcc.org) for more information or to register.
- **MSK Staff Registration**  
Registration is complimentary for MSK staff who wish to attend this course. However, you must register online by visiting the course website, [www.mskcc.org/petct](http://www.mskcc.org/petct).

Register online at: [www.mskcc.org/petct](http://www.mskcc.org/petct)

## ACCREDITATION STATEMENT

MSK is accredited by the Accreditation Council for Continuing Medical Education (ACCME) to provide continuing medical education for physicians.

## CREDIT DESIGNATION STATEMENT

MSK designates this live activity for a maximum of *28 AMA PRA Category 1 Credits™*. Physicians should only claim credit commensurate with the extent of their participation in the activity. The AMA has determined that physicians not licensed in the United States but who participate in this CME activity are eligible for *28 AMA PRA Category 1 Credits™*.

## SELF ASSESSMENT MODULES (SAMS)

This program will include **3.5 SAM Credits.**

## FACULTY DISCLOSURE

It is the policy of MSK to make every effort to insure balance, independence, objectivity, and scientific rigor in all continuing medical education activities which it provides as an ACCME accredited provider. In accordance with ACCME guidelines and standards, all faculty participating in an activity provided by MSK are expected to disclose any significant financial interest or other relationship with the manufacturer(s) of any commercial product(s) and/or provider(s) of commercial services which are discussed by the faculty members in an educational presentation. As required by the ACCME, when an unlabeled use of a commercial product or an investigational use not yet approved for any purpose is discussed during an educational activity, MSK requires the speaker to disclose that the product is not labeled for the use under discussion or that the product is still investigational

## ACCOMMODATIONS

For travel information, including hotels in the area of MSK with discounted rates, please visit: [www.mskcc.org/cme](http://www.mskcc.org/cme).

## CONTACT

Continuing Medical Education  
Memorial Sloan Kettering Cancer Center  
633 Third Avenue, 12th Floor  
New York, NY 10017  
[www.mskcc.org/cme](http://www.mskcc.org/cme)  
[cme@mskcc.org](mailto:cme@mskcc.org)

## STAY CONNECTED

[f](#) /MSKCME

[t](#) @MSKCME

[in](#) MSK CME LinkedIn Group

[#MSKpetctCME](#)