



2nd Annual

MSK SYMPOSIUM ON LYMPHOMA

State-of-the-Art in Biology, Therapy
and Patient Care

Friday-Saturday, May 5-6, 2017

Memorial Sloan Kettering Cancer Center
Zuckerman Research Center
417 East 68th Street
New York, NY 10065



Memorial Sloan Kettering
Cancer Center

2nd Annual

MSK SYMPOSIUM ON LYMPHOMA

State-of-the-Art in Biology, Therapy
and Patient Care

SYMPOSIUM OVERVIEW

This symposium will feature updated information on lymphoma biology, diagnosis, immunology, and genetics, and ongoing efforts to translate the scientific discoveries into novel treatment strategies for a variety of lymphomas. Faculty will review the current standard of care and present their own perspectives on how they treat various types of lymphomas. Participants will have the opportunity to discuss diagnostic and management cases, and how to incorporate biologic and genetic biomarkers into clinical practice and clinical trials.

TARGET AUDIENCE

The target audience includes medical and radiation oncologists, hematopathologists, scientists, and medical trainees involved in diagnosis, treatment, and biomedical research of lymphoma.

COURSE DESIGN

This course is comprised of lectures and interactive audience participation encouraging the intellectual exchange of ideas between faculty and participants.



Join the conversation!

#MSKLymphomaCME

FACULTY



SYMPOSIUM CHAIR

Anas Younes, MD
Chief, Lymphoma Service

ORGANIZING COMMITTEE

Ahmet Dogan, MD, PhD
Craig H. Moskowitz, MD
Hans Guido Wendel, MD
Joachim Yahalom, MD, FACR
Andrew Zelenetz, MD, PhD

MSK FACULTY

Maria E. Arcila, MD
Connie Lee Batlevi, MD, PhD
Renier J. Brentjens, MD, PhD
John F. Gerecitano, MD, PhD
Steven Horwitz, MD
Alison Moskowitz, MD
David Straus, MD

INVITED FACULTY

Olena Barbash, PhD

GlaxoSmithKline

Elías Campo, MD

University of Barcelona,
Spain

George P. Canellos, MD

Dana Farber Cancer Institute

John Chan, MD

City of Hope National Medical Center

Riccardo Dalla Favera, MD

Columbia University

Chi Dang, MD, PhD

University of Pennsylvania

Ralf Kupperts, PhD

University Clinics of Essen,
Germany

Tak W. Mak, PhD

University of Toronto,
Canada

Robert Marcus, MD

Kings College Hospital,
United Kingdom

Laura Pasqualuci, MD

Columbia University

Vincent Ribrag, MD

Institute Gustave Roussey,
France

Simon Rule, MD

Plymouth University,
United Kingdom

Louis Staudt, MD, PhD

National Cancer Institute

Constantine Tam, MBBS, MD

Peter MacCallum Cancer Center,
Australia

Thomas E. Witzig, MD

Mayo Clinic

Pier-Luigi Zinzani, PhD

University of Bologna,
Italy

Emanuele Zucca, MD

Oncology Institute of Southern Switzerland,
Switzerland

HIGHLIGHTS

COCKTAIL RECEPTION

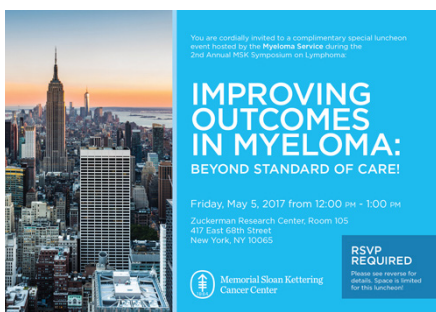
Friday, May 5th | 6:00-7:00 pm

Participants are invited to join course director, Dr. Anas Younes, and the entire course faculty for a cocktail reception on Friday evening from 6:00-7:00 pm at Zuckerman Research Center.

SPECIAL LUNCHEON EVENTS | RSVP Required*

Improving Outcomes in Myeloma: Beyond Standard of Care!

Friday, May 5th | 12:00-1:00 pm



Hosted by:

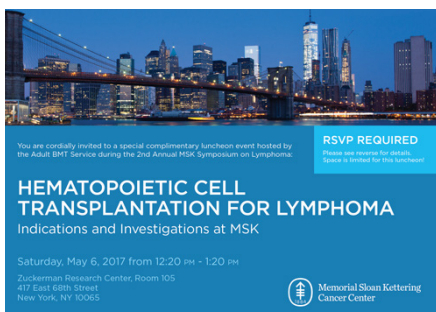
Myeloma Service

Faculty:

**C. Ola Landgren, MD, PhD,
Sham Mailankody, MBBS,
Neha Korde, MD**

Hematopoietic Cell Transplantation for Lymphoma: Indications and Investigations at MSK

Saturday, May 6th | 12:20-1:20 pm



Hosted by:

Adult BMT Service

Faculty:

**Miguel-Angel Perales, MD,
Craig S. Sauter, MD**

***RSVP is required;** details will be emailed to you after registration in the Lymphoma Symposium.

AGENDA | Friday, May 5, 2017

7:30 am REGISTRATION & BREAKFAST

SESSION I

Advances in Diagnosis and Biomarkers

CHAIRS Ahmet Dogan, MD, PhD

8:00 am DEPARTMENT OF MEDICINE GRAND ROUNDS

The Lymphomas: Progress and Challenges

George P. Canellos, MD

9:00 am **Welcoming Remarks**

Anas Younes, MD

9:15 am **Lymphoma Classification**

Ahmet Dogan, MD, PhD

9:45 am **Advances in Molecular Diagnostics**

Maria E. Arcila, MD

10:15 am **New RECIL Lymphoma Response Criteria**

Anas Younes, MD

10:45 am **Application of DNA Sequencing into Clinical Practice**

Connie Lee Batlevi, MD, PhD

11:15 am **State of Lymphoma at MSK**

Anas Younes, MD

12:00 pm LUNCH

Myeloma Service Luncheon (RSVP Required)

LOCATION: ZUCKERMAN 105

C. Ola Landgren, MD, PhD

Sham Mailankody, MBBS

Neha Korde, MD

SESSION II

Diffuse Large B Cell Lymphoma-I

CHAIRS Thomas Witzig, MD
Andrew D. Zelenetz, MD, PhD

1:00 pm **DLBCL Overview**

Andrew D. Zelenetz, MD, PhD

1:30 pm **Advances in DLBCL Biology**

Riccardo Dalla-Favera, MD

2:00 pm **Mechanism-Based Therapy of Lymphoma**

Louis M. Staudt, MD, PhD

2:30 pm **DLBCL: Novel Agents and Promising Combinations**

Thomas Witzig, MD

3:00 pm BREAK

SESSION III

Mantle Cell and Follicular Lymphomas

CHAIRS Elías Campo, MD
Emanuele Zucca, MD

3:30 pm **MCL Biology**

Elías Campo, MD

4:00 pm **How I Treat MCL**

Simon Rule, MD

4:30 pm **Follicular Lymphoma Biology**

Laura Pasqualuci, MD

5:00 pm **How I Treat FL**

Robert Marcus, MD

5:30 pm **Marginal Zone Lymphoma**

Emanuele Zucca, MD

Cocktail Reception

6:00 pm Participants are invited to join the course faculty for a cocktail reception from 6pm - 7 pm.

AGENDA | Saturday, May 6, 2017

7:30 am BREAKFAST

SESSION IV

Focus On New Targets and Targeted Therapy-I

CHAIRS Tak W. Mak, PhD
Anas Younes, MD

8:00 am **Myc**
Chi Dang, MD, PhD

8:30 am **PRMT5**
Olena Barbash, PhD

9:00 am **PLK4**
Tak W. Mak, PhD

9:30 am **CAR T cells**
Renier J. Brentjens, MD, PhD

10:00 am BREAK

SESSION V

Focus On New Targets and Targeted Therapy-II

CHAIRS Pier-Luigi Zinzani, PhD
John F. Gerecitano, MD, PhD

10:20 am **Bcl2**
John F. Gerecitano, MD, PhD

10:40 am **BTK and Syk**
Constantine Tam, MBBS, MD

11:00 am **PI3K**
Pier-Luigi Zinzani, PhD

11:20 am **PD1/PDL1**
Anas Younes, MD

11:40 am **EZH2**
Vincent Ribrag, MD

12:00 pm **Exploring New Therapeutic Ideas for Lymphoma**
Hans-Guido Wendel, MD

12:20 pm LUNCH

Adult BMT Service Luncheon (RSVP Required)

LOCATION: ZUCKERMAN 105

Miguel-Angel Perales, MD

Craig S. Sauter, MD

SESSION VI

T Cell Lymphoma

CHAIRS John Chan, MD
Steven M. Horwitz, MD

1:20 pm **T Cell Lymphoma Biology**
John Chan, MD

1:50 pm **How I Treat T Cell Lymphoma**
Steven M. Horwitz, MD

2:10 pm **How I Treat CTCL**
Alison J. Moskowitz, MD

SESSION VII

Hodgkin Lymphoma

CHAIRS George P. Canellos, MD
Craig H. Moskowitz, MD

2:30 pm **HL Biology**
Ralf Kuppers, PhD

3:00 pm **Early Stage HL and the Evolving Role of Radiation Therapy**
Joachim Yahalom, MD, FACR

3:20 pm **Advanced stage HL**
David J. Straus, MD

3:40 pm **How I treat relapsed HL**
Craig H. Moskowitz, MD

4:00 pm **CLOSING REMARKS**
Anas Younes, MD

REGISTRATION

	EARLY Before 3/17/17	GENERAL After 3/17/17
Physicians (MDs, PhDs and DOs)	\$350	\$400
Nurses, PAs and Other Healthcare Professionals	\$150	\$200
Residents and Fellows	\$100	\$150
Industry Members*	\$700	\$700

Register online at:
www.mskcc.org/lymphomacourse

REGISTRATION DETAILS

Registration includes continental breakfast, lunch, and refreshment breaks. Please contact us at least one week prior to the course if you have any special dietary needs.

- **30% Discounted Rate for MSK Alumni and MSK Alliance Members**
MSK offers a 30% discounted rate to all MSK Alumni and MSK Alliance members to attend a CME course. Please contact cme@mskcc.org for a promo code or more information.
- **MSK Staff Registration**
Registration is complimentary for MSK staff who wish to attend this course. However, you must register online by visiting the course website, www.mskcc.org/lymphomacourse.

*Industry Members

Registration is for educational purposes only. Marketing, sales, and promotion of products and services are prohibited at CME activities.

ACCREDITATION STATEMENT

MSK is accredited by the Accreditation Council for Continuing Medical Education (ACCME) to provide continuing medical education for physicians.

AMA CREDIT DESIGNATION STATEMENT

MSK designates this live activity for a maximum of **16.00 AMA PRA Category 1 Credits™**. Physicians should only claim credit commensurate with the extent of their participation in the activity.



FACULTY DISCLOSURE

It is the policy of MSK to make every effort to insure balance, independence, objectivity, and scientific rigor in all continuing medical education activities which it sponsors as an ACCME accredited provider. In accordance with ACCME guidelines and standards, all faculty participating in an activity sponsored by MSK are expected to disclose any significant financial interest or other relationship with the manufacturer(s) of any commercial product(s) and/or provider(s) of commercial services which are discussed by the faculty members in an educational presentation. As required by the ACCME, when an unlabeled use of a commercial product or an investigational use not yet approved for any purpose is discussed during an educational activity, MSK requires the speaker to disclose that the product is not labeled for the use under discussion or that the product is still investigational.

ACCOMMODATIONS

For information on hotels in the area of MSKCC with discounted rates, please visit: www.mskcc.org/cme.

CONTINUING MEDICAL EDUCATION
MEMORIAL SLOAN KETTERING CANCER CENTER
633 Third Avenue, 12th Floor, New York, NY 10017
www.mskcc.org/cme | cme@mskcc.org