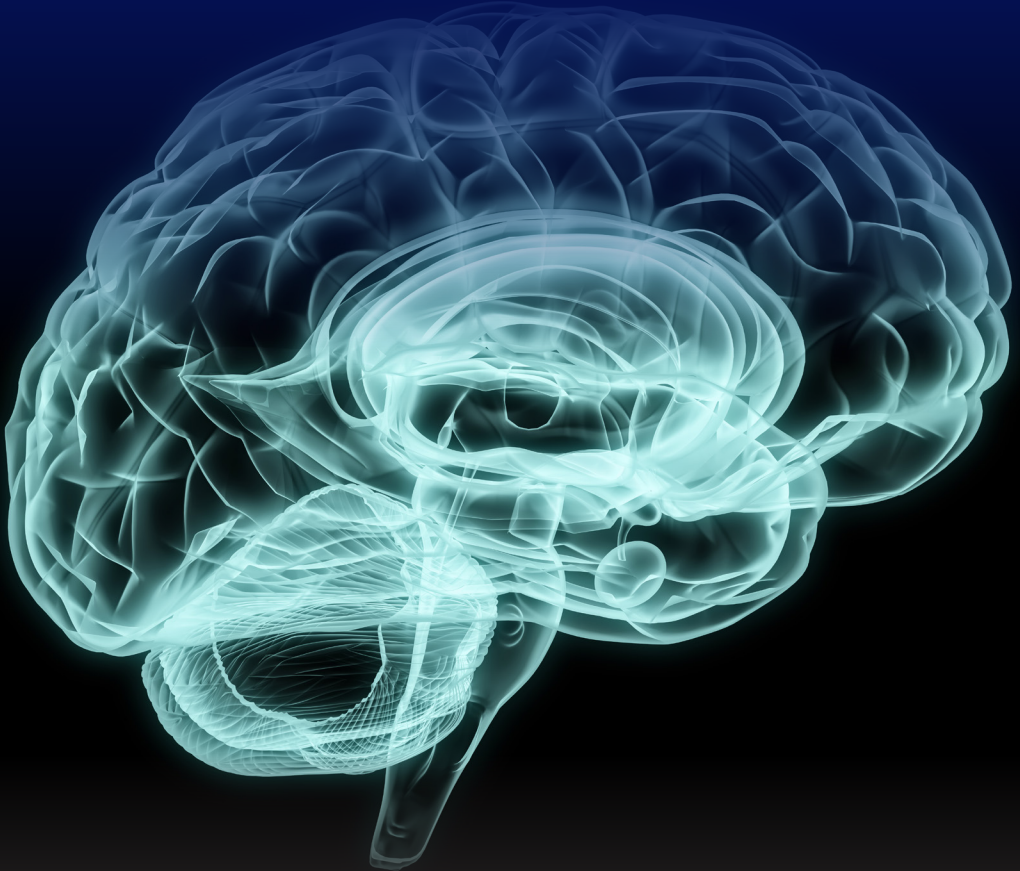


SEPTEMBER 18, 2024 • VIRTUAL

Innovations in Neuro-Oncology

for the Advanced Practice Provider



Memorial Sloan Kettering
Cancer Center

Overview

Neuro-oncology is a uniquely specialized field requiring providers to have advanced knowledge and understanding to optimize patient care.

This course is designed to update Advanced Practice Providers and other healthcare professionals on the latest treatments and clinical trials, enhancing their understanding of the complex management of patients living with cancers of the central nervous system (CNS).

This course will cover topics such as neurosurgical innovations, novel therapies, the challenges and successes of clinical trials, and the commitment to increasing access to available treatments for all individuals with CNS cancers.

LEARNING OBJECTIVES

- Engage participants in a comprehensive learning experience through a case study approach.
- Explore the advances in novel therapies and clinical trials for cancers of the central nervous system.
- Discuss the challenges and successes of clinical trial in neuro-oncology.
- Highlight innovations in neurosurgical procedures and early recovery after surgery.
- Employ early recognition and treatment of neuro-oncologic emergencies.

FORMAT & TARGET AUDIENCE

This course will be conducted **live virtually via Zoom** and is intended for advanced practice providers, nurse practitioner students, physician assistant students, clinical nurse specialists, registered nurses, and physicians.

SYLLABUS

Attendees of this live program will receive access to an online syllabus after the course, which will include selected PDFs of faculty presentations (slides) and recorded videos from the sessions.

REGISTRATION

- Physicians (MDs, PhDs, and DOs): **\$249**
- Advanced Practice Providers: **\$199**
- Nursing and Other Healthcare Professionals: **\$149**
- Residents, Fellows, and APP Students: **\$25**
- Industry Professionals*: **\$435**

Discounted registration is available for specific groups, including health professional students and registrants in low & lower-middle income countries.

*An “industry professional” is defined as any individual, regardless of their profession type (such as MDs, PhDs, APPs, RNs, etc.) that is employed by an ineligible company.

For more details and to register, visit:

msk.org/NeuroOncAPP

MSK COURSE DIRECTORS



Jessica Goggin
DNP, AGACNP-BC, AGPCNP-BC, CNRN
Nurse Practitioner
Department of Neurology



Linda McKenna
AGACNP-BC, ANP-BC, CNS, CCRN-CMC
Nurse Practitioner Specialist
Neurology/Neurosurgery APP Fellowship Coordinator
Neurological Advanced Care Unit
Departments of Neurology and Neurosurgery

MSK COURSE APP SPONSOR



Nicole N. Zakak
MS, RN, CPNP, CPHON®
Advanced Practice Provider Quality and Professional
Development Director

MSK COURSE PHYSICIAN SPONSOR



Christian Grommes, MD
Associated Member
Early Drug Development and Brain Tumor Services
Department of Neurology

Memorial Sloan Kettering Cancer Center adheres to the ACCME's Standards for Integrity and Independence in Accredited Continuing Education. Any individuals in a position to control the content of a CE activity, including faculty, planners, reviewers, or others are required to disclose all financial relationships with ineligible companies (commercial interests). All relevant financial relationships have been mitigated prior to the commencement of the activity.

COURSE PLANNING COMMITTEE

Linda D'Andrea, MSN, RN, PPCNP-BC, CPHON®

Advanced Practice Provider Specialist
Nurse Practitioner
Neuroblastoma Service
Department of Pediatrics

Lauren Dominianni, MS, CNS, AGCNS-BC, CMSRN

Clinical Nurse Specialist,
Neurology, Neurosurgery, Orthopedics

Kelly Haviland, PhD, RN, MSN, FNP-BC, TGNB-C

Manager of Advanced Practice Provider Development;
LGBTQI+ Clinical Consultant

Mary Petriccione, MSN, RN, PPCNP-BC

Nurse Practitioner
Department of Pediatrics

Kaitlyn Twomey, PA-C

Physician Assistant
Neuroscience Service
New York-Presbyterian Hospital/Weill Cornell Medical Center

MSK COURSE FACULTY

Ori Barzilai, MD

Director of Minimally Invasive Spine Oncology
Associate Attending
Department of Neurosurgery

Adrienne A. Boire, MD, PhD

Geoffrey Beene Junior Faculty Chair
Associate Attending
Brain Tumor Service
Department of Neurology

Joshua A. Budhu, MD, MS, MPH

Nicholls-Biondi Diversity Clinical Scientist Faculty Scholar
Assistant Attending
Brain Tumor Service
Department of Neurology

Helen Jacob, DNP, RN, FNP-BC

Clinical Trials Nurse Practitioner

Adam Kahleifeh, PharmD

Clinical Pharmacy Specialist
Neuro-Oncology Service

Ivan Kotchetkov, MD

Instructor
Brain Tumor Service
Department of Neurology

Alexander N. Shoushtari, MD

Associate Attending
Cellular Therapy and Melanoma Services
Department of Medicine

Marcel Smith, BSN, MSN, MSPharm

Clinical Trials Nurse Practitioner

Mark M. Souweidane, MD

Attending
Pediatric Surgical Service
Department of Neurosurgery
Memorial Sloan Kettering Cancer Center
Professor, Neurological Surgery
Director of Pediatric Neurosurgery
New York-Presbyterian/Weill Cornell Medical Center

Kristen Tracy, PA-C

Physician Assistant
Neurology Consult Service

Jessica A. Wilcox, MD

Assistant Attending
Brain Tumor Service
Department of Neurology

Suzanne L. Wolden, MD, FACR

Attending
Director, Pediatric Radiation Oncology
Department of Radiation Oncology



Memorial Sloan Kettering
Cancer Center

Schedule


Wednesday, September 18

All times listed on the schedule are in Eastern Time (ET), New York time.

8:25 AM	Attendee Zoom Sign-on
8:30 AM	Introductory Remarks Jessica Goggin, DNP, AGACNP-BC, AGPCNP-BC, CNRN Linda McKenna, AGACNP-BC, ANP-BC, CNS, CCRN-CMC
8:40 AM	A Word From Our Sponsor Nicole N. Zakak, MS, RN, CPNP, CPHON®

Keynote Address

MODERATOR: Linda McKenna, AGACNP-BC, ANP-BC, CNS, CCRN-CMC

8:45 AM	 Increasing Access to Care and Health Equity in Neuro-Oncology Joshua A. Budhu, MD, MS, MPH
---------	----------------------------------------------------------------------------------------------------------------------------------------------------------------------------------------

Introduction to Clinical Trials

MODERATOR: Linda D'Andrea, MSN, RN, PPCNP-BC, CPHON®

9:15 AM	The Selection Process for Clinical Trials Marcel Smith, BSN, MSN, MSPharm
9:40 AM	The Phases of Clinical Trials Helen Jacob, DNP, RN, FNP-BC
10:05 AM	Panel Discussion and Q&A

Disrupting Tumor Viability

MODERATOR: Mary Petriccione, MSN, RN, PPCNP-BC


10:15 AM	INDIGOing, Going, Gone Jessica Goggin, DNP, AGACNP-BC, AGPCNP-BC, CNRN
10:40 AM	Turning Up the Heat with LITT Surgery Mark M. Souweidane, MD
11:05 AM	Panel Discussion and Q&A
11:15 AM	Break

#MSKCME #MSKAPPCME #MSKNeuroOncAPP

msk.org/NeuroOncAPP

Novel Treatments in Neuro-Oncology

MODERATOR: Kelly Haviland, PhD, RN, MSN, FNP-BC, TGNB-C

11:30 AM	Fundamentals of Targeted Therapy Adam Kahleifeh, PharmD 
11:55 AM	Fundamentals of Immunotherapy Alexander N. Shoushtari, MD
12:20 PM	Panel Discussion and Q&A
12:30 PM	Lunch Break

Crossing the Blood Brain Barrier

MODERATOR: Jessica Goggin, DNP, AGACNP-BC, AGPCNP-BC, CNRN

1:00 PM	Multimodality Management for Brain Metastasis Adrienne A. Boire, MD, PhD
1:25 PM	Intrathecal Therapies in Treating Leptomeningeal Disease Jessica A. Wilcox, MD
1:50 PM	Protons and Photons Suzanne L. Wolden, MD, FACR
2:15 PM	Panel Discussion and Q&A

Neurological Complications of Cancer

MODERATOR: Linda McKenna, AGACNP-BC, ANP-BC, CNS, CCRN-CMC

2:25 PM	An Autonomic Storm is Coming Kaitlyn Twomey, PA-C
2:50 PM	Neurotoxicity in CAR-T Cell Therapy Kristen Tracy, PA-C
3:15 PM	Panel Discussion and Q&A
3:25 PM	Break

Looking Ahead to the Future

MODERATOR: Linda McKenna, AGACNP-BC, ANP-BC, CNS, CCRN-CMC

3:40 PM	The Possibilities of CAR-T Cell Treatment in Brain Cancer Ivan Kotchetkov, MD
4:05 PM	Endoscopy and Robotics in Spine Oncology Ori Barzilai, MD
4:30 PM	Panel Discussion and Q&A
4:40 PM	Closing Remarks Jessica Goggin, DNP, AGACNP-BC, AGPCNP-BC, CNRN Linda McKenna, AGACNP-BC, ANP-BC, CNS, CCRN-CMC
4:45 PM	Adjournment



Accreditation

Memorial Sloan Kettering Cancer Center is accredited by the Accreditation Council for Continuing Medical Education to provide continuing medical education for physicians.

AMA CREDIT DESIGNATION STATEMENT

Memorial Sloan Kettering Cancer Center designates this live activity for a maximum of **7.00 AMA PRA Category 1 Credits™**. Physicians should claim only the credit commensurate with the extent of their participation in the activity.

ABS CC RECOGNITION STATEMENT

Successful completion of this CME activity, which includes participation in the evaluation component, enables the learner to earn credit toward the CME and Self-Assessment requirement(s) of the American Board of Surgery's Continuous Certification program. It is the CME activity provider's responsibility to submit learner completion information to ACCME for the purpose of granting ABS credit.

MOC/CC points earned will be reported to the board within 45 days of completing a post-course evaluation.

ANCC CNE STATEMENT

Memorial Sloan Kettering Cancer Center–Nursing Professional Development / Continuing Education is accredited with distinction as a provider of nursing continuing professional development (NCPD) by the American Nurses Credentialing Center's Commission on Accreditation.

7.25 contact hours will be awarded to participants who attend the program in its entirety and complete a program evaluation.

Partial credit not awarded.

ADVANCED PRACTICE PROVIDERS

- American Academy of Nurse Practitioners National Certification Program accepts *AMA PRA Category 1 Credits™* from organizations accredited by the ACCME.
- American Nurses Credentialing Center (ANCC) accepts *AMA PRA Category 1 Credits™* from organizations accredited by the ACCME.
- National Commission on Certification of Physician Assistants (NCCPA) accepts *AMA PRA Category 1 Credits™* from organizations accredited by ACCME.



Memorial Sloan Kettering
Cancer Center