



Memorial Sloan Kettering  
Cancer Center



National  
Brain Tumor  
Society



Memorial Sloan Kettering Cancer Center, in collaboration  
with the National Brain Tumor Society, present

# INNOVATIONS IN BRAIN TUMOR MANAGEMENT

**APRIL 5-6, 2019**

Rockefeller Research Laboratories  
430 East 67th Street  
New York, NY





Memorial Sloan Kettering  
Cancer Center



National  
Brain Tumor  
Society



**Memorial Sloan Kettering Cancer Center**, in collaboration with the **National Brain Tumor Society**, present ***Innovations in Brain Tumor Management***.

Day 1, *Innovations in Brain Tumor Management*, will provide an up-to-date review of neuro-oncology, including a review of the most common primary brain tumors, for practitioners. Day 2, *Living with a Brain Tumor*, will provide attendees education and up-to-date information on medical, behavioral, and social implications of a brain tumor diagnosis, including a multidisciplinary review of care and services available at MSK.

Please note that day 1 is directed towards healthcare providers. We invite patients and caregivers to attend day 2 on a complimentary basis. Please see page 6 for details.

For additional information and registration, visit:

[mskcc.org/neuro-oncology-course](https://mskcc.org/neuro-oncology-course)

#### MSK Program Planning Committee



**Thomas J. Kaley, MD**

Director, Neuro-Oncology Fellowship Program  
Department of Neurology



**Elena Pentsova, MD**

Associate Director, Neuro-Oncology Fellowship Program  
Department of Neurology



**Edward K. Avila, DO**

Acting Co-Chair, Department of Neurology  
Co-Director, Neuro Advanced Care Unit



**Ingo K. Mellinghoff, MD**

Acting Co-Chair, Department of Neurology  
Chief, Brain Tumor Service



## Day 1 Overview

**Day 1, *Innovations in Brain Tumor Management*, will provide an up-to-date review of neuro-oncology including a review of the most common primary brain tumors.** An emphasis will be placed on cutting edge innovations in the management of brain tumors essential for practitioners managing neuro-oncology patients, including novel treatment approaches and upcoming biomarker evaluations such as CSF cell free DNA.

### Target Audience

The **target audience for day 1** includes physicians, trainees, and allied health professionals caring for patients with brain tumors.

### Learning Objectives

- Update participants on specific types of brain tumors encountered in clinical practice including low-grade gliomas, glioblastoma, primary CNS lymphoma, and meningioma
- Provide a review of the most cutting edge new and emerging treatment strategies for brain tumors, including targeted therapies, immunotherapies, and CAR T-cell therapies
- Review new and updated strategies for neurosurgical and radiation treatments for gliomas and brain metastases

### MSK Course Director (Day 1)



**Thomas J. Kaley, MD**

Director, Neuro-Oncology Fellowship Program  
Department of Neurology

Join the conversation: [#MSKneuro-oncologyCME](https://twitter.com/MSKneuro-oncologyCME) 

Be sure to tag [@MSKCME](https://twitter.com/MSKCME) in your tweets.

### Invited Course Faculty



**Martin J. van den Bent, MD, PhD**

Director, Department of Neuro-Oncology  
The Brain Tumor Center at Erasmus  
MC Cancer Institute



**Christine Brown, PhD**

Associate Director, T Cell Therapeutics Research Laboratory;  
Departments of Hematology & Hematopoietic Cell Transplantation and Immuno-Oncology  
City of Hope



**Timothy F. Cloughesy, MD**

Director, Neuro-Oncology Program;  
Department of Neurology  
UCLA Health

### MSK Course Faculty



**Edward K. Avila, DO**

Acting Co-Chair, Department of Neurology  
Co-Director, Neuro Advanced Care Unit



**Kathryn Beal, MD**

Associate Attending  
Department of Radiation Oncology



**Cameron W. Brennan, MD**

Director, Intraoperative MRI  
Department of Neurosurgery



**Lisa M. DeAngelis, MD**

Acting Physician-in-Chief, Memorial Hospital  
Lillian Rojzman Berkman Chair in Honor of Jerome B. Posner



**Eli L. Diamond, MD**

Assistant Attending  
Department of Neurology



**Christian Grommes, MD**

Assistant Attending  
Department of Neurology



**Ingo K. Mellinghoff, MD**

Acting Co-Chair, Department of Neurology  
Chief, Brain Tumor Service



**Gregory J. Riely, MD, PhD**

Vice Chair, Clinical Research, Department of Medicine



**Robert J. Young, MD**

Director, 3T Neuroradiology Imaging  
Department of Radiology



**Jedd D. Wolchok, MD, PhD**

Chief, Melanoma & Immunotherapeutics Service  
Director, Parker Institute for Cancer Immunotherapy at MSK

Day 1 Schedule

FRIDAY, APRIL 5

8:00 AM	Registration & Breakfast
8:30 AM	<b>Welcome &amp; Introduction</b> Thomas J. Kaley, MD
8:40 AM	<b>Advances in Neuroimaging</b> Robert J. Young, MD
9:00 AM	<b>Lower Grade Glioma: at the end of the first stage?</b> Martin J. van den Bent, MD, PhD
9:30 AM	<b>Seizure Management in Glioma</b> Edward K. Avila, DO
9:50 AM	<b>Q&amp;A</b>
10:00 AM	Break
10:10 AM	<b>Innovations in Glioma Surgery</b> Cameron W. Brennan, MD
10:30 AM	<b>Radiation Therapy for Glioma</b> Kathryn Beal, MD
10:50 AM	<b>CAR T cell Therapy for Glioma</b> Christine Brown, PhD
11:20 AM	<b>Evaluation of Novel Agents in Glioblastoma</b> Timothy F. Cloughesy, MD
11:50 AM	<b>Q&amp;A</b>
12:00 PM	Lunch
1:00 PM	<b>Advances in Immune Checkpoint Inhibition</b> Jedd D. Wolchok, MD, PhD
1:30 PM	<b>Evolving Therapies for Brain Metastases</b> Gregory J. Riely, MD, PhD
2:00 PM	<b>Meningioma</b> Thomas J. Kaley, MD
2:20 PM	<b>Q&amp;A</b>
2:30 PM	Break
2:40 PM	<b>Precision Medicine Approaches in Neuro-Oncology</b> Ingo K. Mellinghoff, MD
3:00 PM	<b>CNS Lymphoma</b> Christian Grommes, MD
3:20 PM	<b>Histiocytosis and Erdheim-Chester Disease</b> Eli L. Diamond, MD
3:40 PM	<b>Q&amp;A</b>
3:50 PM	<b>Closing Remarks and Perspectives</b> Lisa M. DeAngelis, MD
4:10 PM	Adjourn
4:10 PM	<b>Networking Reception</b> Attendees are invited to join the course faculty for a networking reception from 4:10-5:30 PM in Rockefeller Research Laboratories Room 116.

Day 2 Overview

**Day 2, *Living with a Brain Tumor*, will provide attendees education and up-to-date information on medical, behavioral, and social implications of a brain tumor diagnosis.** It will introduce the multidisciplinary care clinic (MDCC) and services available at MSK for patients and caregivers to address coping skills and improve quality of life after brain tumor diagnosis. In addition to lectures, the conference will include opportunities for interactive conversation between participants and faculty.

Target Audience

The **target audience for day 2** includes patients with primary brain tumors, caregivers of patients with brain tumors, nurses, residents, fellows, neurologists, neuro-oncologists, social workers, rehabilitation medicine physicians, case managers, physical therapists and occupational therapists.

Learning Objectives

- Update participants on principle and rationale of clinical trials
- Learn about patient and caregiver services offered at MSK
- Introduce the multidisciplinary care clinic model-consisting of nurses, physical therapist, rehabilitation medicine doctor, nutritionist, case manager, social worker, and spiritual adviser.

MSK Course Director (Day 2)



**Elena Pentsova, MD**  
Associate Director, Neuro-Oncology Fellowship Program  
Department of Neurology

**MSK is pleased to invite patients and caregivers to attend day 2 on a complimentary basis.** Attendees are welcome to join in person or view a live simulcast of the event.

Please email [cme@mskcc.org](mailto:cme@mskcc.org) to register.

(Include your name, email address, phone number and whether you will be attending in person or prefer to view the live simulcast)

MSK Course Faculty



**Yesne Alici, MD, FACLP, FAPM**  
Clinical Director, Psychiatry Service  
Department of Psychiatry



**Allison J. Applebaum, PhD**  
Psychologist  
MSK Counseling Center



**Dana Bossert, RN, BSN, OCN**  
Nursing Coordinator, ECD Registry



**Alan Carver, MD**  
Attending Neurologist  
Department of Neurology



**Dominique Jean-Charles, MSN, MPH, RN, CCM**  
Nurse Case Manager - Case Management Department



**Thomas J. Kaley, MD**  
Director, Neuro-Oncology Fellowship Program  
Department of Neurology



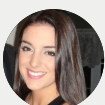
**Brian C. Kelly**  
Chaplain



**Ingo K. Mellinghoff, MD**  
Acting Co-Chair, Department of Neurology  
Chief, Brain Tumor Service



**Lisa Ruppert, MD**  
Assistant Physiatrist,  
Department of Neurology  
Assistant Director, Cancer Rehabilitation Medicine Fellowship



**Maryann Sibilla, BSN, RN**  
Registered Nurse  
Outpatient Services



**Anastasia Zankowsky, LMSW**  
Clinical Social Worker

Invited Patient/Caregiver Speakers

**Ruth Kavanagh**  
**Catherine Cronin**  
**David C. Cronin, MD, PhD, MHCM, FACS, FACHE**  
**Sabine Schwab, PhD**

Day 2 Schedule

SATURDAY, APRIL 6

8:30 AM	Breakfast
9:00 AM	<b>Welcome &amp; Introduction</b> Elena Pentsova, MD
9:05 AM	<b>General Overview of Brain Tumor Therapies</b> Ingo K. Mellinghoff, MD
9:25 AM	<b>Patient and Practitioners' Views on Clinical Trials</b> Thomas Kaley, MD Dana Bossert, RN, BSN, OCN
9:45 AM	<b>Q&amp;A</b>
9:50 AM	Break
9:55 AM	<b>Patient Stories</b> Ruth Kavanagh Catherine Cronin and caregiver, David C. Cronin, MD, PhD, MHCM, FACS, FACHE
10:10 AM	<b>Maintaining and Improving Mobility</b> Lisa Ruppert, MD
10:30 AM	<b>Coping with Brain Tumor Diagnosis</b> Yesne Alici, MD, FACLP, FAPM
10:50 AM	<b>Caregiver Burden: What To Do About It and How to Prevent It!</b> Allison J. Applebaum, PhD
11:10 AM	<b>Q&amp;A</b>
11:20 AM	<b>Patient Story</b> Sabine Schwab, PhD
11:30 AM	<b>Treating the Whole Patient from a Nursing Perspective</b> Maryann Sibilla, BSN, RN
11:40 AM	<b>Multidisciplinary Care Clinic</b> Elena Pentsova, MD Lisa Ruppert, MD Anastasia Zankowsky, LMSW Dominique Jean-Charles, MSN, MPH, RN, CCM Maryann Sibilla, BSN, RN Brian C. Kelly
12:00 PM	<b>Closing Remarks</b> Alan Carver, MD
12:15 PM	Lunch and Networking with Faculty/Patients/Caregivers

Live Simulcast Available for Patients and Caregivers

Patients and caregivers are welcome to attend this course on a complimentary basis either in person or via a live simulcast. Please note that registration is required for either option.

Registration Fees (Fri-Sat, April 5-6)	Early	General
Physicians (MDs, PhDs and DOs)	\$300	\$350
Residents, Fellows, Advanced Practice Providers, Nurses, and Other Healthcare Providers	\$100	\$150
Industry Professionals**	\$575	\$625
Registration Fees (Sat, April 6 Only)		
All Providers	--	\$75

\*Early registration expires March 1, 2019

\*\*Industry professionals may attend MSK CME activities for their own education. Marketing, sales, and promotion of products and services is strictly prohibited at MSK CME activities.

### Register Online: [mskcc.org/neuro-oncology-course](http://mskcc.org/neuro-oncology-course)

Course registration includes continental breakfast, lunch, and refreshment breaks. Please contact [cme@mskcc.org](mailto:cme@mskcc.org) at least one week prior to the course if you have any special dietary requests or require any specific accommodations.

- **MSK is pleased to invite patients and caregivers to attend day 2 on a complimentary basis. Please email [cme@mskcc.org](mailto:cme@mskcc.org) to register** (include your name, email address, phone number and whether you will be attending in person or prefer to view the live simulcast)
- **MSK CME offers a 30% discounted rate for MSK Alumni, MSK Cancer Alliance and Cancer Care Partners.** If you are a member of one of these groups, please contact [cme@mskcc.org](mailto:cme@mskcc.org) for more information.
- **MSK employee registration is complimentary.** However, you must complete course registration in order to attend this course.

#### Symposium Location

Memorial Sloan Kettering Cancer Center  
Rockefeller Research Laboratories  
430 East 67th Street  
New York, NY

#### Accommodations

For information on hotels in the vicinity of MSK with discounted rates, please visit: [mskcc.org/cme](http://mskcc.org/cme).

#### Contact

Memorial Sloan Kettering Cancer Center  
Office of Continuing Medical Education  
[mskcc.org/cme](http://mskcc.org/cme)  
[cme@mskcc.org](mailto:cme@mskcc.org)



#### Accreditation

Memorial Sloan Kettering Cancer Center is accredited by the Accreditation Council for Continuing Medical Education to provide continuing medical education for physicians.



#### AMA Credit Designation Statement

Memorial Sloan Kettering Cancer Center designates this live activity for a maximum of **9.50 AMA PRA Category 1 Credits™**. Physicians should claim only the credit commensurate with the extent of their participation in the activity.

#### ANCC CNE Statement\*

Memorial Sloan Kettering Cancer Center – Nursing Professional Development/Continuing Education is accredited with distinction as a provider of continuing nursing education by the American Nurses Credentialing Center's Commission on Accreditation.



**3.10 CNE contact hours** will be awarded to participants who attend a live program, in its entirety, and complete a program evaluation. Partial credit not awarded.

\*Please note that ANCC CNE contact hours are only available for day 2.

#### Faculty Disclosure

It is the policy of MSK to make every effort to insure balance, independence, objectivity, and scientific rigor in all continuing medical education activities which it provides as an ACCME accredited provider. In accordance with ACCME guidelines and standards, all faculty participating in an activity provided by MSK are expected to disclose any significant financial interest or other relationship with the manufacturer(s) of any commercial product(s) and/or provider(s) of commercial services which are discussed by the faculty members in an educational presentation. As required by the ACCME, when an unlabeled use of a commercial product or an investigational use not yet approved for any purpose is discussed during an educational activity, MSK requires the speaker to disclose that the product is not labeled for the use under discussion or that the product is still investigational.