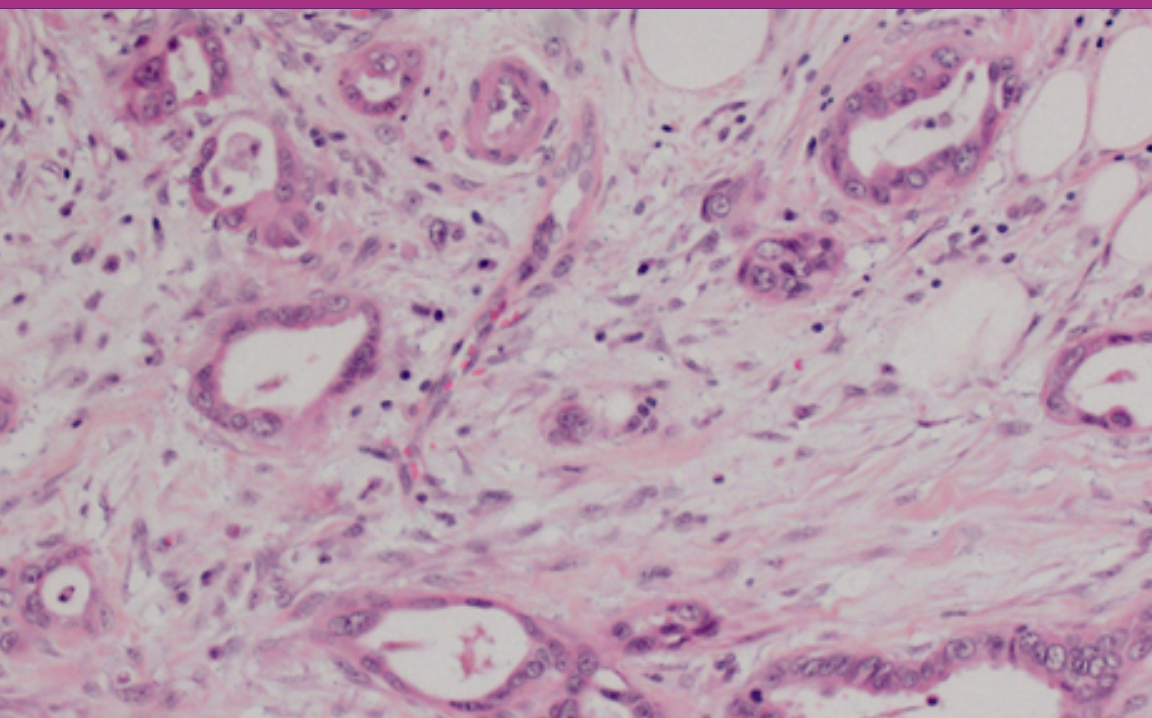


Memorial Sloan Kettering Cancer Center presents:

PANCREAS CANCER SYMPOSIUM

State-of-the-Art 2018 and Beyond



November 30, 2018

Zuckerman Research Center | New York City

In partnership with:

David M. Rubenstein Center for Pancreatic Cancer Research



Memorial Sloan Kettering
Cancer Center



Symposium Overview

Pancreas cancer incidence is on the rise. Treatment paradigms are changing and many novel approaches are under development in this disease. This one day course in conjunction with the David M. Rubenstein Center for Pancreatic Cancer Research at Memorial Sloan Kettering is very timely and will review the epidemiology, genomic, molecular and pathologic underpinnings of this disease along with discussing diagnostic and therapeutic approaches for localized, locally advanced and metastatic pancreas adenocarcinoma. An emphasis will be on multidisciplinary decision making and will include a case-based focus. The course will also discuss novel treatments under development and where the field is heading.

Educational Objectives

- Understand the pathologic, genetic and molecular hallmarks of pancreas cancer.
- Understand the importance of and where to optimally utilize multidisciplinary care for management of pancreas cancer.
- Outline current diagnostic and surgical strategies for pancreas cancer.
- Review the indications and implications of germline and somatic testing in pancreas cancer.
- Define the key novel therapeutic approaches for management of pancreas cancer.

Target Audience

The target audience for this symposium includes medical oncologists, surgical oncologists, gastroenterologists, nurses, pharmacists, APPs and other healthcare professionals involved in the diagnosis, treatment, and research of pancreatic cancer.

Multidisciplinary Breakout Session

Refer to page 4 for session agenda.

This session targets the following providers: Nurses, NP’s, PA’s, Clinical Trial Nurses, Social Workers and Nutritionists. Providers who practice in the Inpatient, Ambulatory Care setting, and clinical trials will benefit. Pancreas cancer presents with many challenges. Patients with pancreas cancer have a unique spectrum of disease and treatment related adverse events which often overlap making care of these patients challenging. Emerging clinical trials with new agents broaden the potential spectrum of toxicities. In this session a multidisciplinary team will address the complex care needs of these patients.

- Review best practices for management of disease and treatment related symptoms for patients with pancreas cancer.
- Outline the multifaceted psychosocial challenges of patients and families experiencing cancer.
- Review the implications of emerging clinical trials and new agents and impact on caring for the patient with pancreas cancer.
- Optimize nutritional considerations for patients with pancreas cancer.
- Describe the need for early intervention and how a multidisciplinary team approach can improve patient care.

MSK Course Directors



Eileen M. O'Reilly, MD
Associate Director
David M. Rubenstein Center for Pancreatic Cancer Research
Attending Physician, Member
Memorial Sloan Kettering Cancer Center
Professor of Medicine
Weill Cornell Medical College



David S. Klimstra, MD
Chairman
Department of Pathology

MSK Keynote Lecturer



Craig B. Thompson, MD
President and Chief Executive Officer

In partnership with the:

**David M. Rubenstein
Center for Pancreatic
Cancer Research**

Led by an internationally renowned team of clinicians and scientists, Memorial Sloan Kettering’s David M. Rubenstein Center for Pancreatic Cancer Research aims to improve the lives of patients with pancreatic malignancies through bold, innovative, multidisciplinary research.

Visiting Faculty

Peter J. Allen, MD

Chief of Surgery, Duke Cancer Institute
Chief of Surgical Oncology
Duke University Health System
Durham, NC

MSK Course Faculty

Vinod P. Balachandran, MD, FACS

Assistant Attending Surgeon
Hepatopancreatobiliary Service
Department of Surgery
Member Researcher
Parker Institute for Cancer Immunotherapy
Member Researcher
David M. Rubenstein Center for Pancreatic Cancer Research

Fiona Begg, LMSW

Clinical Social Worker
Outpatient Gastrointestinal and Hepatopancreatobiliary Services
Department of Social Work

Robin Brenner, RN, OCN

Pancreas Cancer Clinical Trials Nurse III
David M. Rubenstein Center for Pancreatic Cancer Research

Christopher Crane, MD

Attending and Vice Chairman
Department of Radiation Oncology

Jeffrey Drebin, MD, PhD

Chairman
Department of Surgery
Hepatopancreatobiliary Service

Andrew S. Epstein, MD

Assistant Attending
Department of Medicine

Jody Gilman, MS, RDN, CDN

Outpatient Clinical Dietitian-Nutritionist

William R. Jarnagin, MD, FACS

Leslie H. Blumgart, MD Chair in Surgery
Chief, Hepatopancreatobiliary Service
Department of Surgery

Erica Kaufmann, MSN, RN, AGPCNP-BC, OCN

Pancreatic Cancer Research Nurse Practitioner
David M. Rubenstein Center for Pancreatic Cancer Research

David Paul Kelsen, MD

Edward S Gordon Chair in Medical Oncology
Professor of Medicine
Weill Cornell Medical College

Richard Kinh Do, MD, PhD

Associate Attending
Department of Radiology

Benjamin Krantz, MD, MBA

Fellow in Hematology/Oncology, NYU
Consultant, MSK

Christine A. Iacobuzio-Donahue, MD, PhD

Attending
Department of Pathology
Human Oncology and Pathogenesis Program
Interim Director
David M. Rubenstein Center for Pancreatic Cancer Research

Sara H. Olson, PhD

Associate Attending Epidemiologist
Department of Epidemiology and Biostatistics

Marsha Reyngold, MD, PhD

Assistant Attending
Department of Radiation Oncology

Mark A. Schattner, MD, FASGE, AGAF

Chief, Gastroenterology Hepatology, and Nutrition Service
Department of Medicine

Zsafia K. Stadler, MD

Associate Attending Physician
Clinic Director
Clinical Genetics Service

Anna M. Varghese, MD

Assistant Attending
Gastrointestinal Oncology Service
Department of Medicine

Kenneth H. Yu, MD, MSc

Assistant Attending
Assistant Professor
Weill Cornell Medical College
Adjunct Assistant Professor
Department of Pharmacology
University of Pennsylvania
Clinical Fellow
Cold Spring Harbor Laboratory

Scientific Agenda

| | |
|---------|--------------------------------------------------------------------------------------------------------------------------------------------------------------------------------------------------------------------------------------|
| 7:30 AM | Registration & Breakfast |
| 8:00 AM | Symposium Introduction & Welcome Eileen M. O'Reilly, MD & David S. Klimstra, MD |
| 8:05 AM | Keynote Lecture & Department of Medicine Grand Rounds Why are Ras and p53 Mutations the Most Common Molecular Signature in Pancreatic Cancer? New Insights to An Old Problem Craig B. Thompson, MD |
| 9:00 AM | Break |

Pathology, Genomics, Epidemiology

MODERATORS: David S. Klimstra, MD & Christine A. Iacobuzio-Donahue, MD, PhD

| | |
|----------|-------------------------------------------------------------------------------|
| 9:10 AM | Pancreas Subtypes and More David S. Klimstra, MD |
| 9:30 AM | Genetics of Pancreas Cancer Christine A. Iacobuzio-Donahue, MD, PhD |
| 9:50 AM | Epidemiology of Pancreas Cancer Sara H. Olson, PhD |
| 10:10 AM | Q/A and Panelist Discussion Session Moderators |
| 10:30 AM | Break |

Diagnosis, Imaging and Innovation

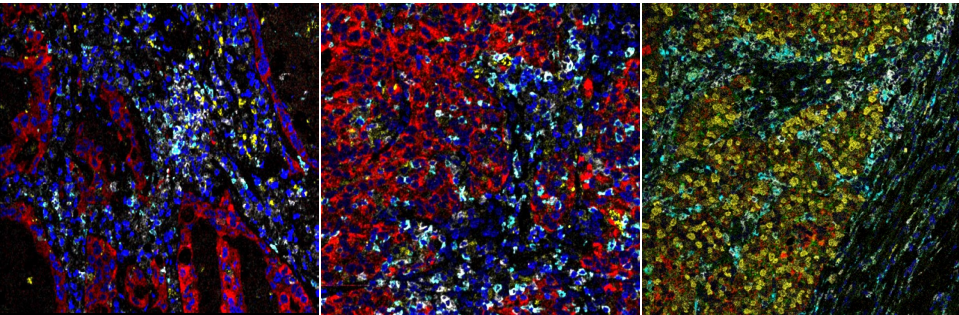
MODERATORS: Mark A. Schattner, MD, FASGE, AGAF & Richard Kinh Do, MD, PhD

| | |
|----------|----------------------------------------------------------------------|
| 10:50 AM | Imaging, CT, PET and the Future Richard Kinh Do, MD, PhD |
| 11:10 AM | Advanced Endoscopy Mark A. Schattner, MD, FASGE, AGAF |
| 11:35 AM | Novel Biomarkers for Pancreas Cancer David Paul Kelsen, MD |
| 11:50 AM | Clinical Genetics of Pancreas Cancer Zsofia K. Stadler, MD |
| 12:10 PM | Q/A and Panelist Discussion Session Moderators |
| 12:30 PM | Lunch |

Resectable, Borderline Resectable and Adjuvant Therapy

MODERATORS: William R. Jarnagin, MD, FACS & Christopher Crane, MD

| | |
|---------|---------------------------------------------------------------------------------------------------------------------|
| 1:15 PM | Surgery for Pancreas Cancer Jeffrey Drebin, MD, PhD |
| 1:30 PM | Adjuvant/Neoadjuvant Therapy Kenneth H. Yu, MD, MSc |
| 1:45 PM | Novel Radiation Strategies for Pancreas Cancer Christopher Crane, MD |
| 2:00 PM | Intraductal Papillary Mucinous Neoplasms: An Opportunity to Prevent Pancreatic Cancer? Peter J. Allen, MD |
| 2:15 PM | Interactive Case Marsha Reyngold, MD, PhD |
| 2:35 PM | Break |



Advanced Disease and Next Generation Approaches

MODERATORS: Eileen M. O'Reilly, MD & David Paul Kelsen, MD

| | |
|---------|----------------------------------------------------------------------------------------------------------------------------------------------------------------------------------------------------------------------------|
| 2:50 PM | Standard Therapies for Pancreas Cancer Anna M. Varghese, MD |
| 3:10 PM | Emerging Therapeutic Directions Eileen M. O'Reilly, MD |
| 3:30 PM | Novel Vaccine Strategies Vinod P. Balachandran, MD, FACS |
| 3:45 PM | Molecular Tumor Board/Cases Benjamin Krantz, MD, MBA |
| 4:15 PM | Symposium Adjourn |
| 5:30 PM | Cocktail & Networking Reception Attendees are invited to join the course faculty for a cocktail and networking reception at Zuckerman Research Center immediately following the conclusion of the symposium. |

Multidisciplinary Breakout Session: Applications for Nurses, Advanced Practitioners and Related Disciplines*

10:50 AM-12:30 PM • Zuckerman Room 105

CHAIRS: Robin B. Brenner, RN, OCN & Andrew S. Epstein, MD

| | |
|----------|--------------------------------------------------------------------------------------------------------------------------------------------------------------|
| 10:50 AM | Introduction Robin B. Brenner, RN, OCN |
| 10:55 AM | Review and Management of Pancreas Cancer: Disease Symptoms and Side Effects of Standard of Care Treatments Erica Kaufmann, MSN, RN, AGPCNP-BC, OCN |
| 11:15 AM | Challenges in Caring for the Pancreas Cancer Patient Participating in Clinical Trials Robin B. Brenner, RN, OCN |
| 11:35 AM | Nutrition and Pancreatic Cancer: Challenges and Choices Jody Gilman, MS, RDN, CDN |
| 11:50 AM | Balancing Hope and Fear: The Unique Challenge of Pancreatic Cancer Fiona Begg, LMSW |
| 12:05 PM | Emerging Research Directions in Supportive Oncology Andrew S. Epstein, MD |
| 12:15 PM | Panel Discussion |
| 12:30 PM | Breakout Session Adjourn / Lunch |

*ANCC CE contact hours available. Please see accreditation section for more information.

Join the conversation!
#MSKPancreasCME 

Registration

| Registration Fees | Early* | General |
|-----------------------------------------------------------|--------|---------|
| Physicians (MDs, PhDs and DOs) | \$275 | \$325 |
| Residents, Fellows, Nurses and Other Healthcare Providers | \$125 | \$175 |
| Industry Professionals* | \$525 | \$575 |

*Early Registration Rate Expires October 15, 2018
**Industry Professionals may attend CME activities for their own education. Marketing, sales, and promotion of products and services is strictly prohibited at MSK CME activities.

Register Online: mskcc.org/PancreasSymposium

Registration includes continental breakfast, lunch, and refreshment breaks. Please contact cme@mskcc.org at least one week prior to the course if you have any special dietary needs.

- 30% Discounted Rate for MSK Alumni and MSK Alliance Members: MSK offers a 30% discounted rate to all MSK Alumni and MSK Alliance members to attend a CME course. Please contact cme@mskcc.org for a promotion code or more information.
- MSK Staff Registration: Registration is complimentary for MSK staff. However, you must register online: mskcc.org/PancreasSymposium

ACCREDITATION

Accreditation Statement

MSK is accredited by the Accreditation Council for Continuing Medical Education (ACCME) to provide continuing medical education for physicians.



AMA Credit Designation Statement

MSK designates this live activity for a maximum of **6.75 AMA PRA Category 1 Credits™**. Physicians should claim only credit commensurate with the extent of their participation in the activity.

ABIM MOC Recognition Statement

Successful completion of this CME activity, which includes participation in the evaluation component, enables the participant to earn up to **6.75 Medical Knowledge MOC Points** in the American Board of Internal Medicine's (ABIM) Maintenance of Certification (MOC) program. Participants will earn MOC points equivalent to the amount of CME credits claimed for the activity. It is the CME activity provider's responsibility to submit participant completion information to ACCME for the purpose of granting ABIM MOC credit

ANCC CE Contact Hours

Memorial Sloan Kettering Cancer Center - Nursing Professional Development/ Continuing Education is accredited with distinction as a provider of continuing nursing education by the American Nurses Credentialing Center's Commission on Accreditation.

Contact hours will be awarded to participants who attend the program in its entirety and complete a program evaluation. Partial credit not awarded.



@MSKCME
 /MSKCME
 MSKCME LinkedIn Group

Faculty Disclosure

It is the policy of MSK to make every effort to insure balance, independence, objectivity, and scientific rigor in all continuing medical education activities which it provides as an ACCME accredited provider. In accordance with ACCME guidelines and standards, all faculty participating in an activity provided by MSK are expected to disclose any significant financial interest or other relationship with the manufacturer(s) of any commercial product(s) and/or provider(s) of commercial services which are discussed by the faculty members in an educational presentation. As required by the ACCME, when an unlabeled use of a commercial product or an investigational use not yet approved for any purpose is discussed during an educational activity, MSK requires the speaker to disclose that the product is not labeled for the use under discussion or that the product is still investigational.

Travel & Accommodations

Symposium Location

Memorial Sloan Kettering Cancer Center
Mortimer B. Zuckerman Research Center
417 East 68th Street
New York, NY 10065

Hotels

MSK has negotiated special rates and amenities at select hotels in Manhattan. For information on hotels in the area of MSK with discounted rates, please visit: mskcc.org/cme.

Contact

Memorial Sloan Kettering Cancer Center
Office of Continuing Medical Education
W: mskcc.org/cme
E: cme@mskcc.org