

Memorial Sloan Kettering Cancer Center presents

# RECTAL MRI

## WORKSHOP • 2019

---

**November 7**

Zuckerman Research Center  
New York, NY

Includes complimentary registration to:

**Regional Therapy for Advanced and Metastatic  
Colorectal and Appendiceal Cancers**

November 8-9, 2019



Memorial Sloan Kettering  
Cancer Center

# Rectal MRI Workshop

**Thursday, November 7**

The use of pelvic MRI for staging and restaging rectal cancer in routine clinical practice continues to grow due to extensive evidence that it impacts clinical outcomes. This hands-on course will offer the opportunity to learn or brush up on fundamental rectal MRI skills. Short lectures and whole-case reviews on individual workstations will demonstrate a full range of rectal cancer cases and some less common tumors as well as anal cancer. Pearls and Pitfalls will be emphasized. Post-treatment restaging cases will be plentiful as this is more commonly performed and requires experience to interpret properly.

Our annual hands on workshop includes dedicated workstations and a large number of rectal MRI cases of varying stages and clinical scenarios for each participant to work through. A course manual with reproduced images and arrows serves as a guide to all cases. Mini-lectures are interspersed throughout the day by expert faculty, including guest faculty. At the end of the course, participants will have greater confidence interpreting rectal MRI.

By attending this workshop, attendees will learn:

- **How to interpret baseline rectal MRI**
- **How to interpret re-staging MRI**
- **How to avoid pitfalls**

## Target Audience

The educational activity is designed for practicing radiologists, radiologists in training, and anyone with an interest in pelvic MRI.

## Learning Objectives

- Understand how to perform high-quality MRI of the pelvis for rectal and anal cancer evaluation
- Understand how to interpret baseline staging MRI for rectal and anal cancer
- Understand how to interpret post-treatment, restaging MRI for rectal cancer
- Understand the value of synoptic/structured reports for rectal and anal cancer

**Space is limited - one workstation per participant.**

## FACULTY

---

### MSK Course Directors



**Marc J. Gollub, MD, FACR, FSAR**

Director of CT and GI Imaging  
Body imaging Service  
Department of Radiology



**Jennifer S. Golia Pernicka, MD**

Assistant Attending Radiologist  
Body imaging Service  
Department of Radiology

### Invited Course Faculty

#### Supreeta Arya, MD

Professor of Radiology  
Tata Memorial Centre Advanced Centre for Treatment  
Research and Education in Cancer  
Mumbai, India

#### Lennart K. Blomqvist, MD, PhD

Professor, Department Imaging/Physiology  
Karolinska University Hospital Research Group  
Leader, Radiology  
Karolinska Institutet  
Stockholm, Sweden

### MSK Course Faculty



**David D.B. Bates, MD**

Assistant Attending Radiologist



**Viktoriya Paroder, MD, PhD**

Assistant Attending Radiologist



**Iva Petkovska, MD**

Assistant Attending Radiologist

## SCHEDULE

### Thursday, November 7

|          |   |
|----------|---|
| 7:30 AM  | Registration and Breakfast  |
| 7:55 AM  | <b>Welcome and Introduction</b><br>Marc J. Gollub, MD, FACR, FSAR<br>Jennifer S. Golia Pernicka, MD     |
| 8:00 AM  | <b>Normal Pelvic Anatomy and Optimal MR Technique</b><br>Supreeta Arya, MD                              |
| 8:15 AM  | <b>Baseline Rectal Cancer Staging</b><br>Iva Petkovska, MD  |
| 8:30 AM  | <b>Structured Reporting: How I Do It</b><br>Jennifer S. Golia Pernicka, MD                              |
| 8:45 AM  | <b>Hands-On Review;<br/>(Exemplary Case Navigation - 10 mins)</b><br>Marc J. Gollub, MD, FACR, FSAR     |
| 10:30 AM | Break   |
| 10:45 AM | <b>Hands-On Review</b>  |
| 12:30 PM | Lunch   |
| 1:00 PM  | <b>Post-Treatment Restaging MRI</b><br>Lennart K. Blomqvist, MD, PhD                                    |
| 1:15 PM  | <b>Hands-On Review</b>  |
| 2:15 PM  | <b>Pearls and Pitfalls of Interpreting Baseline<br/>and Restaging MRI</b><br>Viktoriya Paroder, MD, PhD |
| 2:30 PM  | <b>Imaging and Staging of Anal Squamous Cell Cancer</b><br>David D.B. Bates, MD                         |
| 2:45 PM  | <b>Hands-On Review</b>  |
| 4:30 PM  | <b>Question and Answer Session</b>  |
| 5:00 PM  | Adjourn   |

#### Cocktail Reception

Attendees are invited to join the 4<sup>th</sup> Annual Advances in Colorectal Oncology networking reception in the lobby of Zuckerman Research Center from 5:00-6:30 PM. Hors d'oeuvres and refreshments will be served.



Join the conversation:  
**#MSKrectalmriCME**  
**@MSKCME**

## REGISTRATION

| Registration Fee  | Early*         | General        |
|---|----------------|----------------|
| Physicians, Fellows, Residents, and Other<br>Healthcare Professionals | <b>\$1,050</b> | <b>\$1,150</b> |

\*Early registration rate expires October 1, 2019

Register online:  
[mskcc.org/rectalmri](https://mskcc.org/rectalmri)

Course registration includes continental breakfast, lunch, and refreshment breaks. Please contact [cme@mskcc.org](mailto:cme@mskcc.org) at least one week prior to the course if you have any special dietary requests or require any specific accommodations.

- **Discounted rate for MSK Alumni, MSK Cancer Alliance and Cancer Care Partners** - Please contact [cme@mskcc.org](mailto:cme@mskcc.org) for more information.
- **MSK employee registration is complimentary** (registration required).

#### Accreditation

Memorial Sloan Kettering Cancer Center is accredited by the Accreditation Council for Continuing Medical Education to provide continuing medical education for physicians.

#### AMA Credit Designation Statement

Memorial Sloan Kettering Cancer Center designates this live activity for a maximum of **8.25 AMA PRA Category 1 Credits™**. Physicians should claim only the credit commensurate with the extent of their participation in the activity.

#### Faculty Disclosure

It is the policy of MSK to make every effort to insure balance, independence, objectivity, and scientific rigor in all continuing medical education activities which it provides as an ACCME accredited provider. In accordance with ACCME guidelines and standards, all faculty participating in an activity provided by MSK are expected to disclose any significant financial interest or other relationship with the manufacturer(s) of any commercial product(s) and/or provider(s) of commercial services which are discussed by the faculty members in an educational presentation. As required by the ACCME, when an unlabeled use of a commercial product or an investigational use not yet approved for any purpose is discussed during an educational activity, MSK requires the speaker to disclose that the product is not labeled for the use under discussion or that the product is still investigational.

#### Conference Location and Accommodations

Zuckerman Research Center  
417 East 68th Street  
New York, NY

MSK has negotiated special rates and amenities at select hotels in Manhattan. For information on hotels in the area of MSK with discounted rates, visit: [mskcc.org/cme](https://mskcc.org/cme)

#### Contact

Memorial Sloan Kettering Cancer Center  
Continuing Medical Education  
[mskcc.org/cme](https://mskcc.org/cme) • [cme@mskcc.org](mailto:cme@mskcc.org)

Includes complimentary registration to the  
4<sup>th</sup> Annual Advances in Colorectal Oncology:

# Regional Therapy for Advanced and Metastatic Colorectal and Appendiceal Cancers

**Friday-Saturday, November 8-9**

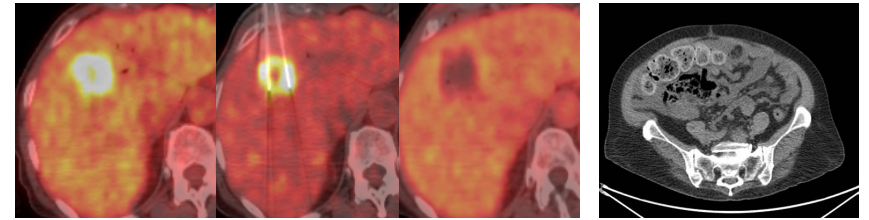
International thought leaders will examine up-to-date regional and systemic approaches to optimize the care of metastatic colorectal cancer patients. Research advances are leading to opportunities for greater personalization of management approaches for patients with colon cancer. A challenge facing clinical practitioners, oncology care teams and healthcare systems is the identification and timely integration of these important innovations, often developed at specialty centers, into day-to-day clinical practice in the community setting and closer to where patients live.

A central goal of this CME course is to help busy oncologists, surgeons, interventional radiologists, radiation oncologists, radiologists, pathologists, and other oncology care team members acquire clinically-relevant, cutting-edge knowledge and translate these innovations into best practices, using lessons learned within the MSK Cancer Alliance and throughout the world highlighting the personalized approach to cancer care taken by MSK.

The second day will incorporate a case-based format that utilizes real-life, clinical scenarios, the moderator of each multidisciplinary expert panel will use audience response to examine key decision points and guide targeted commentary and presentations from panel members that include internationally recognized colon cancer experts from every discipline.

## Target Audience

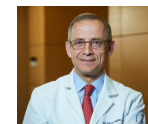
This symposium will help medical oncologists, radiation oncologists, interventional radiologists, colorectal/hepatopancreatobiliary/oncologic surgeons, gastroenterologists, pathologists, and other oncology care team members acquire clinically relevant, cutting-edge knowledge and translate it into best practices.



## Learning Objectives

- Update the learner on the progress made in the management of stage IV colorectal cancer.
- Increase the learner's ability to integrate the various aspects of metastatic colorectal cancer management including timing of surgery, selection of modality for locoregional control, and use of systemic and regional therapies for the metastatic disease.
- Increase the learner's familiarity with genomic predictors of response to therapy.
- Bring participants up to date with the use of immunotherapy and targeted therapy for metastatic disease.
- Review the results of the most important clinical trials in stage IV colorectal cancer.

## MSK Course Directors



### Julio Garcia-Aguilar, MD, PhD

Chief, Colorectal Service  
Benno C. Schmidt Chair in Surgical Oncology  
Department of Surgery



### Garrett M. Nash, MD, MPH, FACS, FASCRS

Associate Attending Surgeon  
Department of Surgery



### Andrea Cercek, MD

Assistant Attending Physician  
Department of Medicine



### Rona D. Yaeger, MD

Assistant Attending Physician  
Department of Medicine