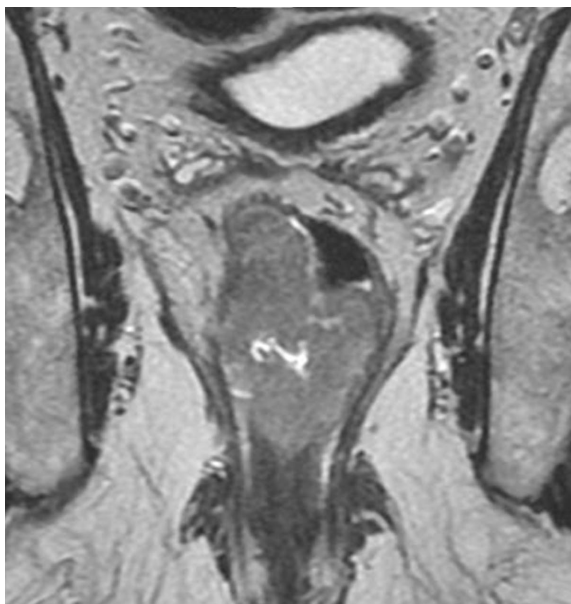
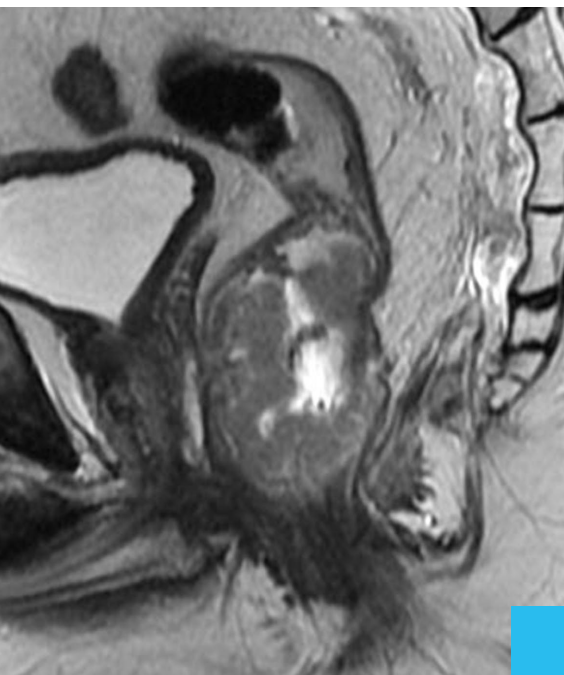


Memorial Sloan Kettering Cancer Center presents:

# 2018 RECTAL MRI WORKSHOP

November 8, 2018 • Zuckerman Research Center



One Workstation Per Participant.  
Space is limited.

Includes complimentary registration to the:

**SYMPOSIUM IN NON-METASTATIC COLON CANCER**

NOVEMBER 9-10, 2018



Memorial Sloan Kettering  
Cancer Center



ADVANCES IN  
COLORECTAL ONCOLOGY  
2018

# 2018 RECTAL MRI WORKSHOP

The use of pelvic MRI in routine clinical practice is growing rapidly, mainly due to the extensive literature supporting its clinical value and expanding clinical indications. This hands-on course will offer the opportunity to learn or brush up on rectal MRI skills. Short lectures and whole case reviews on individual workstations will demonstrate the pearls and pitfalls in the evaluation of rectal MRI performed for staging and follow up evaluations. Hands on review of cases will be intermixed with short didactic lectures. **Space is limited - one workstation per participant.**

## Target Audience

This educational activity is designed for practicing radiologists and radiologists in training as well as anyone with an interest in pelvic MRI.

## Educational Objectives

- Understand how to perform top notch MRI of the pelvis for rectal cancer evaluation
- Understand how to interpret baseline staging MRI for rectal cancer
- Understand how to interpret re-staging, post-treatment MRI for rectal cancer
- Understand the value of Synoptic/Templated reports for rectal cancer

## MSK Course Director



### Marc J. Gollub, MD, FACR, FSAR

Director of CT and GI Imaging  
Body Imaging Service  
Department of Radiology  
Memorial Sloan Kettering Cancer Center

## MSK Course Faculty Department of Radiology

### David D.B. Bates, MD

Assistant Attending Radiologist

### Jennifer S. Golia Pernicka, MD

Assistant Attending Radiologist

### Viktoriya Paroder, MD, PhD

Assistant Attending Radiologist

### Iva Petkovska, MD

Assistant Attending Radiologist

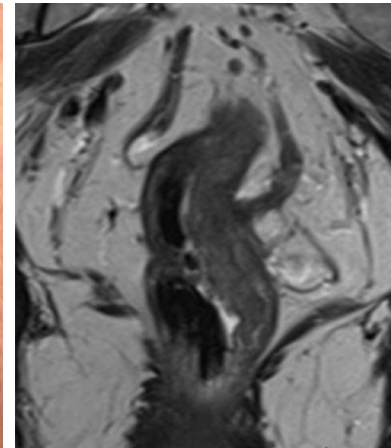
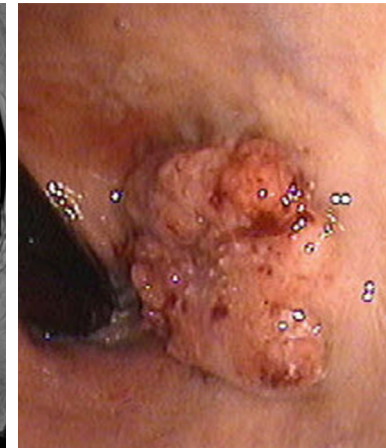
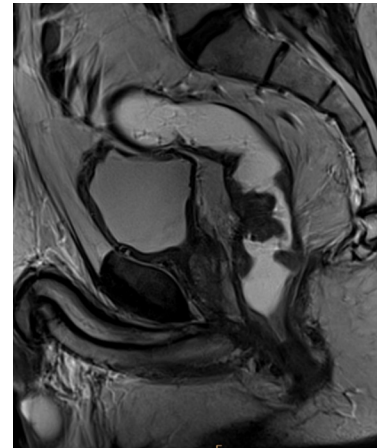
## Invited Course Faculty

### Regina G.H. Beets-Tan, MD, PhD

Chair, Department of Radiology;  
Professor of Radiology  
The Netherlands Cancer Institute  
Amsterdam, The Netherlands

### Mukesh Harisinghani, MD

Director, Abdominal MRI  
Department of Radiology  
Massachusetts General Hospital  
Boston, Massachusetts



## Workshop Agenda

7:30 AM	Breakfast and Registration
7:55 AM	<b>Welcome and Introduction</b> Marc J. Gollub, MD, FACR, FSAR
8:00 AM	<b>Rectal MRI: Normal Anatomy and Optimal MR Performance Technique</b> Mukesh Harisinghani, MD
8:15 AM	<b>Baseline Rectal Cancer Staging</b> Iva Petkovska, MD
8:30 AM	<b>Hands-On Review on Workstation; Exemplary Case Navigation</b> Marc J. Gollub MD
9:45 AM	Break
10:00 AM	<b>Hands-On Review on Workstation</b>
11:00 AM	<b>Post-Treatment Restaging MRI Interpretation</b> Regina G.H. Beets-Tan, MD, PhD
11:15 AM	<b>Question &amp; Answer Session</b>
12:30 PM	Lunch Break
1:00 PM	<b>Structured Reporting for Rectal Cancer MRI</b> Jennifer S. Golia Pernicka, MD
1:15 PM	<b>Hand-On Case Review on Workstations</b>
2:15 PM	<b>Pearls and Pitfalls of Interpretation at Baseline and Restaging MRI</b> Viktoriya Paroder, MD, PhD
2:30 PM	<b>Imaging and Staging Anal Squamous Cell Cancer</b> David D.B. Bates, MD
2:45 PM	<b>Hand-On Case Review on Workstations</b>
4:30 PM	<b>Question and Answer Session</b>
5:00 PM	Adjourn

# REGISTRATION

Registration Fee	Early*	General
Physicians, Fellows, Residents and Other Healthcare Professionals	\$1,050	\$1,150

\*Early Registration Expires September 1, 2018

Register Online:  
[mskcc.org/RectalMRI](http://mskcc.org/RectalMRI)

Registration includes continental breakfast, lunch, and refreshment breaks. Please contact [cme@mskcc.org](mailto:cme@mskcc.org) at least one week prior to the course if you have any special dietary needs.

- **30% Discounted Rate for MSK Alumni and MSK Alliance Members:** MSK offers a 30% discounted rate to all MSK Alumni and MSK Alliance members to attend a CME course. Please contact [cme@mskcc.org](mailto:cme@mskcc.org) for a promotion code or more information.
- **MSK Staff Registration:** Registration is complimentary for MSK staff. However, you must register online: [mskcc.org/RectalMRI](http://mskcc.org/RectalMRI)

## ACCREDITATION STATEMENT

MSK is accredited by the Accreditation Council for Continuing Medical Education (ACCME) to provide continuing medical education for physicians.



## AMA CREDIT DESIGNATION STATEMENT

MSK designates this live activity for a maximum of **8.50 AMA PRA Category 1 Credit(s)**<sup>™</sup>. Physicians should only claim credit commensurate with the extent of their participation in the activity.

## FACULTY DISCLOSURE

It is the policy of MSK to make every effort to insure balance, independence, objectivity, and scientific rigor in all continuing medical education activities which it provides as an ACCME accredited provider. In accordance with ACCME guidelines and standards, all faculty participating in an activity provided by MSK are expected to disclose any significant financial interest or other relationship with the manufacturer(s) of any commercial product(s) and/or provider(s) of commercial services which are discussed by the faculty members in an educational presentation. As required by the ACCME, when an unlabeled use of a commercial product or an investigational use not yet approved for any purpose is discussed during an educational activity, MSK requires the speaker to disclose that the product is not labeled for the use under discussion or that the product is still investigational.

## CONFERENCE LOCATION

Memorial Sloan Kettering Cancer Center  
Zuckerman Research Center  
417 East 68th Street, **Room 105**  
New York, NY

## ACCOMMODATIONS

MSK has negotiated special rates and amenities at select hotels in Manhattan. For information on hotels in the area of MSK with discounted rates, visit: [mskcc.org/cme](http://mskcc.org/cme).

## CONTACT

Memorial Sloan Kettering Cancer Center  
Office of Continuing Medical Education

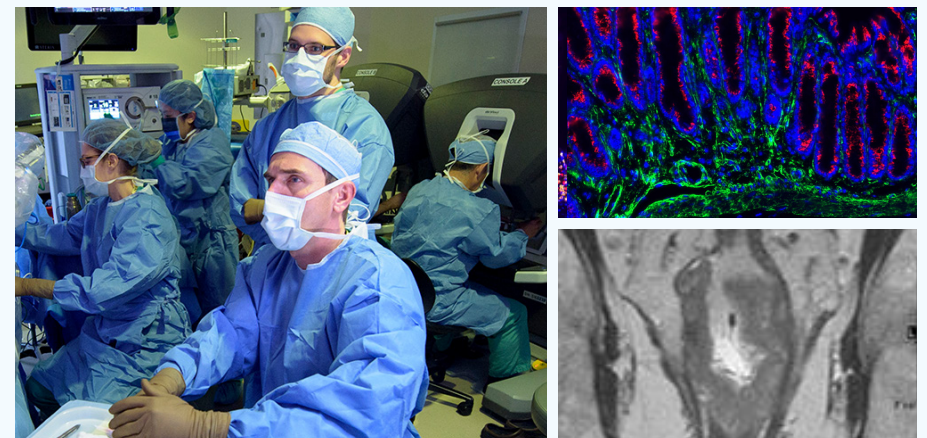
W: [mskcc.org/cme](http://mskcc.org/cme)

E: [cme@mskcc.org](mailto:cme@mskcc.org)

Includes complimentary registration to the:  
**Symposium in Non-Metastatic Colon Cancer**

## Friday-Saturday, November 9-10

International thought leaders will provide up-to-date information regarding optimal care for non-metastatic colon cancer patients. Advances on imaging, neoadjuvant therapies, surgical techniques and tumor profiling are leading to opportunities for greater personalization of management for patients with non-metastatic colon cancer. A challenge facing clinical practitioners, oncology care teams and healthcare systems is the identification and timely integration of these important innovations, often developed at specialty centers, into day-to-day clinical practice in the community setting and closer to where patients live.



This two day symposium will incorporate a multidisciplinary expert panel discussion of real-life clinical scenarios with interactive use audience participation to examine key decision points in the management of patients with non-metastatic colon cancer. After this course, attendees will be better able to tailor care to meet the unique needs of their patients and appreciate the role of dynamic partnerships among providers to optimally personalize and improve outcomes of cancer care.

This symposium will help oncologists, surgeons, gastroenterologists, pathologists, and other oncology care team members acquire clinically-relevant, cutting-edge knowledge and translate these innovations into best practices.

For more information visit:

[mskcc.org/ColorectalCourse](http://mskcc.org/ColorectalCourse)