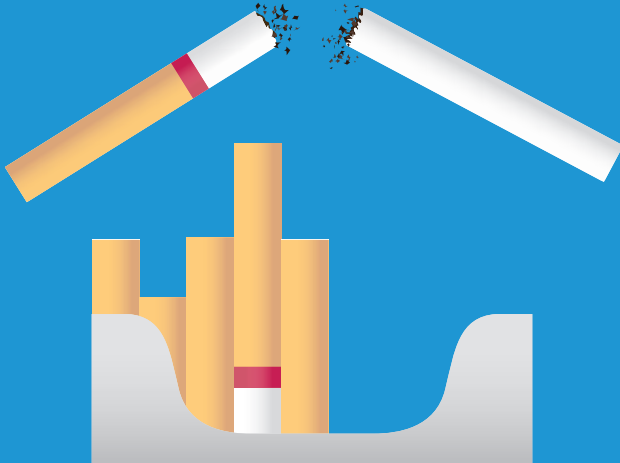




Memorial Sloan Kettering  
Cancer Center

# ASSESSMENT & TREATMENT OF TOBACCO DEPENDENCE IN CANCER CARE



**HOPE**  
TOBACCO TREATMENT  
**SUPPORT**  
NO SHAME  
SMOKING URGES  
**CONFIDENCE**  
SMOKING  
**NICOTINE**  
**CRAVING**  
ADDICTION  
**STAY QUIT**  
SMOKE FREE  
**EVIDENCE BASED**  
PHARMACOTHERAPY  
BEHAVIORAL COUNSELING  
**TOBACCO DEPENDENCE**  
MOTIVATIONAL INTERVIEWING  
STIGMA  
SMOKING RELATED  
**TRIGGERS**

Co-sponsored by the MSK  
Psycho-Oncology Education & Training Institute (POETI)

# ASSESSMENT AND TREATMENT OF TOBACCO DEPENDENCE IN CANCER CARE

It is well-established that smoking is the leading cause of many types of cancer. In addition, persistent smoking among cancer patients is associated with adverse short and long-term clinical outcomes including increased risk for treatment complications, poor health related quality of life, disease recurrence, second primary cancers, disease progression, and mortality. Despite these clinical risks, there are clear research-to-practice gaps and lack of training is routinely identified as a barrier to improving quality of tobacco treatment in oncology care. **This training will prepare learners to provide safe and effective evidence-based treatment for tobacco dependence for the cancer patients/survivors and their family members.**

## Educational Objectives:

- Attendees will gain a better understanding of the risks of persistent smoking and benefits of quitting for cancer patients and survivors
- Attendees will gain a better understanding of evidence-based pharmacotherapy and cessation counseling interventions
- Attendees will have an opportunity to practice tobacco use assessment and treatment planning skills during simulated patient (role play) exercises
- Attendees will gain a better understanding of system-level recommendations for implementing tobacco use assessment and treatment in routine cancer care

The **target audience** is Oncologists, Tobacco Treatment Specialists, Physician Assistants, Nurses, Nurse Practitioners, Social Workers, and Respiratory Therapists working in oncology care settings.

## Course Faculty



**Jamie  
Ostroff, PhD**

Chief, Behavioral Sciences Service  
Director, Tobacco Treatment Program



**Suhana  
de León-Sanchez, NP, CTTS**

Tobacco Treatment Specialist



**C. Will  
Whitlock, NP, CTTS**

Tobacco Treatment Specialist



**Maureen  
O'Brien, CNS, CTTS-M**

Tobacco Treatment Specialist

For more information, or to register, please visit:

[mskcc.org/TobaccoCare](https://mskcc.org/TobaccoCare)

# Course Agenda

## DAY 1

8:00 AM	BREAKFAST & REGISTRATION
8:30 AM	<b>Training Overview/Rationale: Making the Case for Treating Tobacco Dependence in Cancer Patients; Q&amp;A</b>
9:15 AM	<b>Patient Perspectives Panel</b>
9:45 AM	<b>Empathic Assessment of Tobacco Use and Treatment History, How to Give Personalized Quitting Advice; Q&amp;A</b>
10:30 AM	COFFEE BREAK
10:45 AM	<b>Overview of Experiential Small Group Exercise</b>
11:00 AM	<b>Experiential Small Group Exercise</b> GOAL: Empathic Assessment of Tobacco Use and Treatment History, Giving Personalized Quitting Advice
12:30 PM	LUNCH BREAK
1:15 PM	<b>Evidence-Based Treatment of Tobacco Dependence I: Behavioral and Motivational Interventions; Q&amp;A</b>
2:00 PM	<b>Experiential Small Group Exercise</b> Behavioral and Motivational Interventions
3:30 PM	COFFEE BREAK
3:45 PM	<b>Evidence-Based Treatment of Tobacco Dependence II: Pharmacotherapy Interventions; Q&amp;A</b>
5:15 PM	<b>Wrap-Up Group Discussion of Skill Acquisition Experiences; Q&amp;A</b>
5:30 PM	DAY 1 ADJOURN

## DAY 2

8:00 AM	BREAKFAST & REGISTRATION
8:30 AM	<b>Review of Day 1 and Orientation to Day 2</b>
9:00 AM	<b>Experiential Small Group Exercise</b> GOAL: Promoting Shared Decision Making and Adherence to Use of Cessation Pharmacotherapy
10:30 AM	<b>Group Discussion of Skill Acquisition Experiences; Q&amp;A</b>
11:00 AM	COFFEE BREAK
11:15 AM	<b>Implementing TUAT Within Your Cancer Care Setting; Q&amp;A</b>
12:15 PM	LUNCH BREAK
1:00 PM	<b>Group Think Tank</b> Developing a Blueprint for Implementing TUAT in Your Oncology Practice Setting, Identifying/Addressing Patient, Provider and Systems-Level Barriers
2:45 PM	COFFEE BREAK
3:00 PM	<b>Group Discussion of Implementation Blueprint and Goal-setting</b>
3:45 PM	<b>What Happens Next - Collaboratory Videoconference Calls, Follow-up Assessments, Use of TTT-O Website</b>
4:30 PM	<b>Responsible Conduct of Research Training Overview</b>
5:00 PM	<b>Wrap-Up and Program Evaluation</b>
5:30 PM	SYMPOSIUM ADJOURN

## Registration

**Registration for this training program is complimentary for accepted applicants.**

Participants traveling to New York City will be eligible to receive up to \$500 to reimburse for travel expenses. Additionally, a 2 nights stay at the workshop designated hotel will be reimbursed for accepted applicants. The two-day onsite tobacco treatment trainings are held twice a year.

To register, please visit our website:  
[mskcc.org/TobaccoCare](https://mskcc.org/TobaccoCare)

MSK staff who wish to attend should email [cme@mskcc.org](mailto:cme@mskcc.org) in order to register.

**This innovative program includes a 2-day, skills-based workshop to be held at Memorial Sloan Kettering Cancer Center in New York City, NY, followed by 6, monthly, 60 minute Collaboratory Videoconference Calls providing additional opportunities for implementation mentorship and coaching.** This course is comprised of lectures, simulated role plays and interactive audience participation encouraging the intellectual exchange of ideas between faculty and participants.

### Course Location

Memorial Sloan Kettering Cancer Center  
Counseling Center  
641 Lexington Avenue, 7th Floor  
New York, NY 10022

### Accommodations

MSK has negotiated special rates and amenities at select hotels in Manhattan. For information on hotels in the area of MSK with discounted rates, please visit: [mskcc.org/cme](https://mskcc.org/cme).

### Contact

633 Third Avenue, 12th Floor  
New York, NY 10017  
[cme@mskcc.org](mailto:cme@mskcc.org)  
[mskcc.org/cme](https://mskcc.org/cme)

Supported by NCI Award R25CA217693

## Accreditation



### Physicians & Nurses

#### Accreditation Statement

MSK is accredited by the Accreditation Council for Continuing Medical Education (ACCME) to provide continuing medical education for physicians.



#### AMA Credit Designation Statement

Memorial Sloan Kettering Cancer Center designates this live activity for a maximum of **15.5 AMA PRA Category 1 Credits™**. Physicians should only claim credit commensurate with the extent of their participation in the activity.

#### CE Credits

This course will not offer nursing CE credits. Nurses will receive a non-physician CME certificate for AMA PRA Category 1 Credit(s)™. Certain nursing certification providers (such as ANCC) may accept this certificate for CE requirements. Please check with your certification providers for more information.

**This course includes 3 workshop hours dedicated to Pharmacotherapy.**

### Social Workers

Training and Post-Workshop Teleconference: This presentation is approved for a maximum of twenty (20) Continuing Education Contact Hours of Live Training. Memorial Sloan Kettering Cancer Center SW CPE is recognized by the New York State Education Department's State Board for Social Work as an approved provider of continuing education for licensed social workers #0228.

### Faculty Disclosure

It is the policy of MSK to make every effort to insure balance, independence, objectivity, and scientific rigor in all continuing medical education activities which it provides as an ACCME accredited provider. In accordance with ACCME guidelines and standards, all faculty participating in an activity provided by MSK are expected to disclose any significant financial interest or other relationship with the manufacturer(s) of any commercial product(s) and/or provider(s) of commercial services which are discussed by the faculty members in an educational presentation. As required by the ACCME, when an unlabeled use of a commercial product or an investigational use not yet approved for any purpose is discussed during an educational activity, MSK requires the speaker to disclose that the product is not labeled for the use under discussion or that the product is still investigational.



Memorial Sloan Kettering  
Cancer Center

MSK Psycho-Oncology  
Education & Training Institute



Memorial Sloan Kettering  
Cancer Center

[mskcc.org/TobaccoCare](https://mskcc.org/TobaccoCare)

CONTINUING MEDICAL EDUCATION  
MEMORIAL SLOAN KETTERING CANCER CENTER  
633 Third Avenue, 12th Floor, New York, NY 10017  
[mskcc.org/cme](https://mskcc.org/cme) | [cme@mskcc.org](mailto:cme@mskcc.org)

[f](https://www.facebook.com/MSKCME) /MSKCME

[t](https://twitter.com/MSKCME) @MSKCME

[in](https://www.linkedin.com/groups/MSK-CME-LinkedIn-Group) MSK CME LinkedIn Group