



Memorial Sloan Kettering
Cancer Center



5th Annual

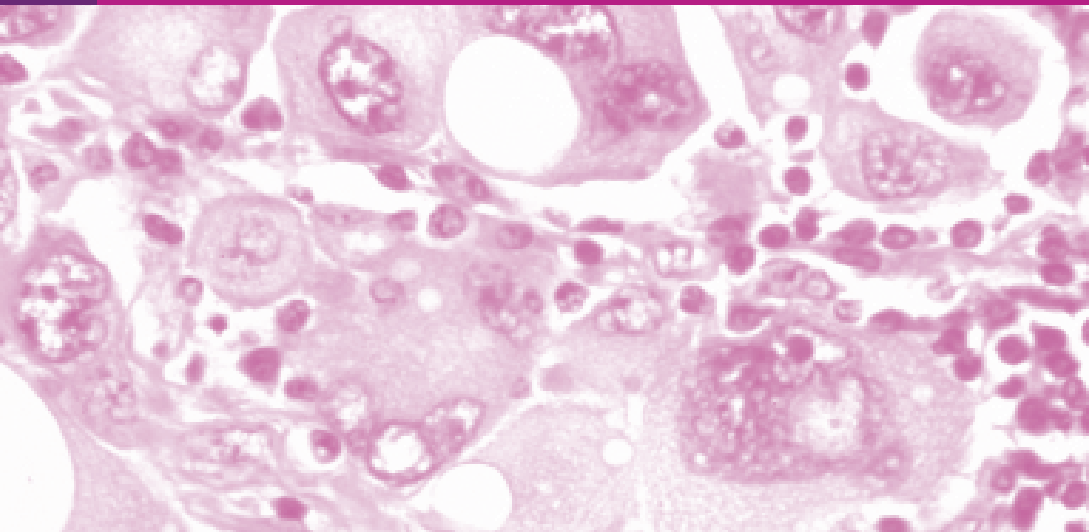
DERMATOLOGIC CARE IN ONCOLOGY SYMPOSIUM

Friday, October 21, 2016

Conference Location:

Memorial Sloan Kettering Cancer Center
Rockefeller Research Laboratories
430 East 67th Street
New York, NY 10065

www.mskcc.org/dermcare



Course Overview

Chemotherapy, radiation, and therapeutic transplants have resulted in remarkable improvements in patient survival. Despite this remarkable success, the majority of patients will develop dermatologic, ocular and mucosal adverse events, which lead to decreased quality of life and inconsistent antineoplastic therapy, both of which may affect clinical outcome. Therefore, attentive dermatological, ocular and mucosal care is critical for the optimization of anticancer therapies.

TARGET AUDIENCE

This course is directed towards Oncologists, Oncology Nurses and Advanced Practitioners.

EDUCATIONAL OBJECTIVES

- Recognize impact on quality of life, clinical presentation, and grading of dermatologic, ocular, and mucosal adverse events in cancer patients
- Understand mechanisms and interventions to prevent and treat dermatologic, ocular, and mucosal conditions in patients treated for cancer
- Discuss basic dermatological procedures and clinical tools to assess dermatologic, ocular, and mucosal conditions in cancer patients

For more information, or to register, visit:

www.mskcc.org/dermcare

Course Faculty

MSK COURSE DIRECTOR



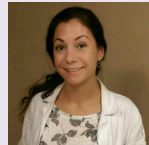
**Mario
E. Lacouture, MD**

Member, Memorial Hospital;
Director, Oncodermatology Program,
Dermatology Service,
Department of Medicine

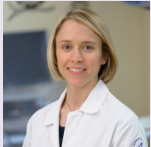
MSK FACULTY



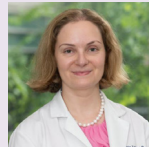
**Kathryn
Ciccolini, RN**
Oncology Nurse,
Dermatology Service,
Department of Medicine



**Molly
Olm-Shipman, RN**
Clinical Nurse,
Department of Radiation
Oncology



**Jasmine
Francis, MD**
Assistant Attending,
Ophthalmology Service,
Department of Surgery



**Efstathia
Tzatha, MD**
Assistant Attending,
Neurology Service,
Department of Neurology

VISITING FACULTY

Milan Anadkat, MD

Associate Professor,
Medicine Division of Dermatology,
Washington University

Jennifer Choi, MD

Associate Professor in Dermatology,
Robert H. Lure Comprehensive Cancer
Center of Northwestern University

Peter Arne Gerber, MD

DALM Senior Physician in the
Department of Dermatology,
University Hospital Dusseldorf

Bernice Kwong, MD

Clinical Associate Professor of
Dermatology and Director of Inpatient
Dermatology Consultation Service,
Stanford Dermatology,
Stanford University Medical Center

Raj Lalla, MD

Interim Associate Dean for Research;
Associate Professor;
Diplomate, American Board of Oral Medicine,
Uconn Health

Nicole LeBouef, MD

Assistant Professor in Dermatology,
Harvard Medical School;
Clinical Director, The Center for Cutaneous
Oncology, Dana-Farber/ Brigham and
Women's Cancer Center;
Director, The Program in Skin
Toxicities at Brigham and Women's/
Dana Farber Cancer Center

Timothy Mainardi, MD

Allergist and Immunologist,
New York Presbyterian/ Cornell Weill

Corina van den Hurk, PhD

Researcher,
Comprehensive Cancer Center,
The Netherlands

Friday, October 21, 2016

- 8:00-9:00am **REGISTRATION & BREAKFAST**
- 9:00-9:10am Welcome & Introduction
Mario E. Lacouture, MD
- 9:10-9:30am Types of Dermatologic Reactions (EM, SJS/TEN, DRESS Rash Types), Grading (i.e. CTCAE, SCORTEN, 9s)
Milan Anadkat, MD
- 9:30-10:10am Skin Adverse Events Induced by Cytotoxic Chemotherapy (Alkylating, Antimetabolites, Topoisomerase Inhibitors, Antimicrotubule Agents)
Nicole LeBoeuf, MD
- 10:10-10:40am Adverse Events Induced by Immunotherapies,
Jennifer Choi, MD
- 10:40-11:00am **COFFEE BREAK**
- 11:00-11:30am Skin Adverse Effects Induced by Targeted Therapies in Solid Tumors (EGFR, MEK, mTOR, VEGFR, RAF inhibitors)
Arne Gerber, MD
- 11:30-12:00pm Skin Adverse Events Induced by Targeted Therapies in Liquid Tumors (Bcr-ABL, Proteasome, CD Inhibitors)
Bernice Kwong, MD
- 12:00-12:30pm Oral Mucosal Toxicities
Raj Lalla, MD
- 12:30-1:30pm **LUNCH**
- 1:30-1:55pm Chemotherapy-Induced Peripheral Neuropathy
Efstathia Tzatha, MD
- 1:55-2:15pm Survivorship Issues
Mario Lacouture, MD
- 2:15-2:45pm Prevention of Chemotherapy Induced Alopecia Through Cooling
Corina van den Hurk, PhD
- 2:45-3:10pm Ocular Toxicities
Jasmine Francis, MD
- 3:10-3:40pm Hypersensitivity and Desensitization
Timothy Mainardi, MD
- 3:40-4:00pm Radiation Skin Toxicity
Molly Olm-Shipman, RN
- 4:00-4:20pm Practical Skin Care Recommendations (Sunscreens, Topical Steroids, OTC Products)
Kathryn Ciccolini, RN
- 4:20pm **ADJOURN**

Registration

Physicians (MDs, PhDs, DOs)	\$250
MSK Alliance, MSK Alumni, and Past Attendees	\$175
Residents, Fellows, RNs and Other Healthcare Providers	\$150
Industry Members*	\$450

*Industry Members: Registration is for educational purposes only. Marketing, sales, and promotion of products and services are prohibited at CME activities.

Register online at:

www.mskcc.org/dermcare

Registration includes continental breakfast, lunch, and refreshment breaks. Please let us know if we can assist you with any special dietary needs.

Registration is complimentary for MSK staff who wish to attend this course.

However, you must register online by visiting the Continuing Medical Education page on [OneMSK](#).

CONTACT Continuing Medical Education
Memorial Sloan Kettering Cancer Center
633 Third Avenue, 12th Floor, New York, NY 10017
cme@mskcc.org

ACCOMMODATIONS

For information on hotels in the area of MSKCC with discounted rates, please visit: www.mskcc.org/accommodations.

ACCREDITATION STATEMENT

MSK is accredited by the Accreditation Council for Continuing Medical Education (ACCME) to provide continuing medical education for physicians.

AMA CREDIT DESIGNATION STATEMENT

MSK designates this live activity for a maximum of **5.5 AMA PRA Category 1 Credits™**. Physicians should only claim credit commensurate with the extent of their participation in the activity. The AMA has determined that physicians not licensed in the United States but who participate in this CME activity are eligible for **5.5 AMA PRA Category 1 Credits™**.

CONTINUING NURSING EDUCATION

Memorial Sloan Kettering Cancer Center is an Approved Provider of continuing nursing education by the Northeast Multistate Division (NE-MSD), an accredited approver by the American Nurses Credentialing Center's Commission on Accreditation.

Contact hours pending.

FACULTY DISCLOSURE

It is the policy of MSK to make every effort to insure balance, independence, objectivity, and scientific rigor in all continuing medical education activities which it sponsors as an ACCME accredited provider. In accordance with ACCME guidelines and standards, all faculty participating in an activity sponsored by MSK are expected to disclose any significant financial interest or other relationship with the manufacturer(s) of any commercial product(s) and/or provider(s) of commercial services which are discussed by the faculty members in an educational presentation. As required by the ACCME, when an unlabeled use of a commercial product or an investigational use not yet approved for any purpose is discussed during an educational activity, MSK requires the speaker to disclose that the product is not labeled for the use under discussion or that the product is still investigational.

OUTCOMES MEASUREMENT SURVEY

Six months after the end of the course an Outcomes Measurement Survey will be sent to all participants to help us determine what positive impacts have been made on participant practice as a result of the course.