

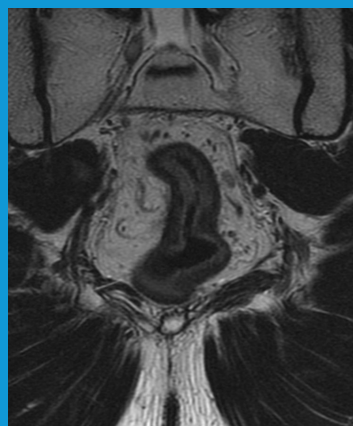
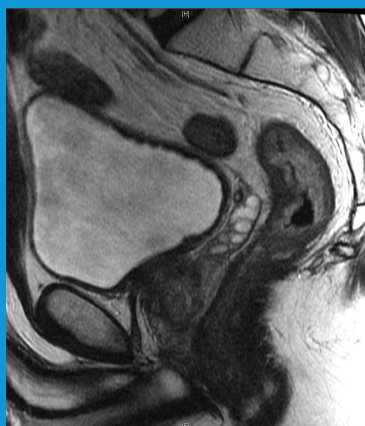
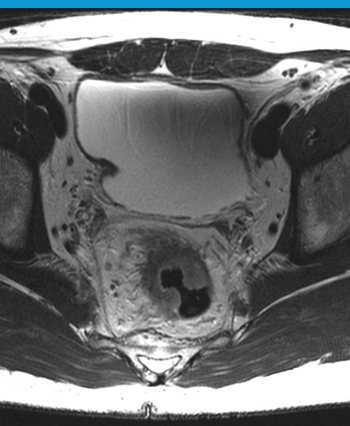


Memorial Sloan Kettering
Cancer Center

RECTAL MRI WORKSHOP

THURSDAY, NOVEMBER 9, 2017

Zuckerman Research Center, New York City



One Workstation Per Participant - Space is limited!

*Includes Complimentary Registration to the
Colorectal Centennial Symposium*

In Conjunction with the
Memorial Sloan Kettering Cancer Center
2nd Annual Advances in Colorectal Oncology Series



ADVANCES IN
COLORECTAL ONCOLOGY
2017



WORKSHOP OVERVIEW

The use of pelvic MRI in routine clinical practice is growing rapidly, mainly due to the extensive literature supporting its clinical value and expanding clinical indications. This hands-on course will offer the opportunity to learn or brush up on rectal MRI skills. Short lectures and whole case reviews on individual workstations will demonstrate the pearls and pitfalls in the evaluation of rectal MRI performed for staging and follow up evaluations. Hands on review of cases will be intermixed with short didactic lectures. **(One workstation per participant.)**

TARGET AUDIENCE

This educational activity is designed for practicing radiologists and radiologists in training as well as anyone with an interest in pelvic MRI.

EDUCATIONAL OBJECTIVES

- Become familiar with rectal MRI indications, acquisition protocols and the normal appearance of male and female pelvic structures as visualized by MRI
- Identify abnormal findings on rectal MRI scans and understand the relevance of these findings to patient care
- Recognize the imaging characteristics of treated rectal cancers and the evolution of findings during non-operative surveillance MRI exams
- Appreciate the value of structured reporting and a standardized lexicon in pelvic MRI

MSK COURSE DIRECTOR



Marc J. Gollub, MD, FACR, FSAR

Director of CT and GI Imaging
Memorial Sloan Kettering
Cancer Center

MSK FACULTY

Iva Petkovska, MD

Radiologist

Jennifer S. Golia Pernicka, MD

Radiologist

Natally Horvat, MD

Visiting Fellow

VISITING FACULTY

Regina Beets-Tan, MD, PhD

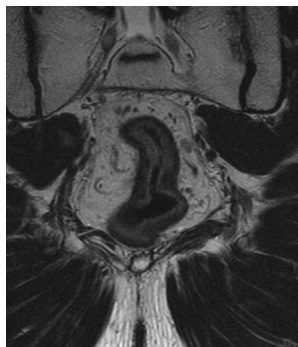
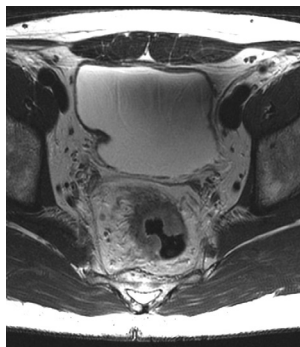
Chair, Department of Radiology;
Professor of Radiology
The Netherlands Cancer Institute
Amsterdam, The Netherlands

Shannon Sheedy, MD

Radiologist
Mayo Clinic
Rochester, Minnesota

Harmeet Kaur, MD

Radiologist
MD Anderson Cancer Center
Houston, Texas



SCIENTIFIC AGENDA

7:30 AM REGISTRATION & BREAKFAST

7:55 AM **Welcome & Introduction**
Marc J. Gollub, MD, FACR, FSAR

8:00 AM **Rectal MRI: Normal Anatomy and Optimal MR Performance Technique**
Jennifer S. Golia Pernicka, MD

8:15 AM **Baseline Rectal Cancer Staging**
Iva Petkovska, MD

8:30 AM **Hands-On Case Review on Workstations**

9:45 AM COFFEE BREAK

10:00 AM **Hands-On Case Review on Workstations**

11:00 AM **Post-Treatment Restaging MRI Interpretation**
Regina G.H. Beets-Tan, MD, PhD

11:15 AM **Question & Answer Session**

12:30 PM LUNCH

1:00 PM **Structured Reporting for Rectal Cancer MRI**
Shannon Sheedy, MD

1:15 PM **Hands-On Case Review on Workstations**

2:15 PM **Interpretation Pitfalls**
Harmeet Kaur, MD

2:30 PM **Imaging and Staging Anal Squamous Cell Cancer**
Natally Horvat, MD

2:45 PM **Hands-On Case Review on Workstations**

4:30 PM **Question & Answer Session**

5:00 PM ADJOURN



In Conjunction with:
2nd Annual Advances in Colorectal Oncology

November 9-11, 2017 | Zuckerman Research Center

The overall objective of this course is to bring participants up to date on the latest **advances in minimally invasive treatment of colorectal cancer** and **multimodal treatment of rectal cancer**. Attending this course will increase familiarity with new techniques and best practices to treat colorectal cancer.

NOV. 9 **TRI-INSTITUTIONAL SYMPOSIUM**
Colorectal Cancer Robotic Surgery Course
& Rectal MRI Workshop

In Collaboration with:
MD Anderson Cancer Center and Mayo Clinic

Participants are invited to join the course faculty for a cocktail reception on Thursday evening from 5:30-7:00 pm.

NOV. 10-11 **MSK CENTENNIAL SYMPOSIUM**
Celebrating a Century of
Multimodality Rectal Cancer Care



Rectal MRI Workshop Participants are invited to join the MSK Centennial Symposium, Friday-Saturday, on a complimentary basis.

Program Highlights:

- Rectal Cancer in 2017: Reflecting Upon a Century of Multimodality Rectal Cancer Care
- Staging Rectal Cancer: Shades of Gray and Pink
- Early-Stage Rectal Cancer
- Radiation Therapy
- Chemotherapy in Rectal Cancer
- Watch & Wait The Nonoperative Approach to Rectal Cancer
- Tumor Board

REGISTRATION

REGISTRATION FEES

Rectal MRI Workshop

Includes Complimentary Registration to the MSK Centennial Symposium, Nov 10-11.

\$ 1,150

REGISTER ONLINE

www.mskcc.org/ColorectalCourse

Registration includes continental breakfast, lunch, and refreshment breaks. Please contact cme@mskcc.org at least one week prior to the course if you have any special dietary needs.

- **30% Discounted Rate for MSK Alumni and MSK Alliance Members**
MSK offers a discounted rate to all MSK Alumni and MSK Alliance members to attend a CME course. Please contact cme@mskcc.org for a promotional code or more information.
- **MSK Staff Registration**
Registration is complimentary for MSK staff. However, you must register online by visiting the course website, www.mskcc.org/ColorectalCourse.

CONFERENCE LOCATION

Zuckerman Research Center
417 East 68th Street
New York, NY

HOTEL ACCOMMODATIONS

A block of rooms has been reserved for this course. For more information regarding travel and accommodations, please visit the course website, www.mskcc.org/ColorectalCourse.

ACCREDITATION STATEMENT

MSK is accredited by the Accreditation Council for Continuing Medical Education (ACCME) to provide continuing medical education for physicians.

AMA CREDIT DESIGNATION STATEMENT

MSK designates this live activity for a maximum of **19.75 AMA PRA Category 1 Credits™**. Physicians should only claim credit commensurate with the extent of their participation in the activity.



Maximum AMA PRA Category 1 Credits Per Day:

Rectal MRI Workshop (Thursday, Nov. 9)	8.00
MSK Centennial Symposium (Friday, Nov. 10)	8.00
MSK Centennial Symposium (Saturday, Nov. 11)	3.75

FACULTY DISCLOSURE

It is the policy of MSK to make every effort to ensure balance, independence, objectivity, and scientific rigor in all continuing medical education activities which it sponsors as an ACCME accredited provider. In accordance with ACCME guidelines and standards, all faculty participating in an activity sponsored by MSK are expected to disclose any significant financial interest or other relationship with the manufacturer(s) of any commercial product(s) and/or provider(s) of commercial services which are discussed by the faculty members in an educational presentation. As required by the ACCME, when an unlabeled use of a commercial product or an investigational use not yet approved for any purpose is discussed during an educational activity, MSK requires the speaker to disclose that the product is not labeled for the use under discussion or that the product is still investigational.

CONTINUING MEDICAL EDUCATION
MEMORIAL SLOAN KETTERING CANCER CENTER

633 Third Avenue, 12th Floor, New York, NY 10017
www.mskcc.org/cme | cme@mskcc.org